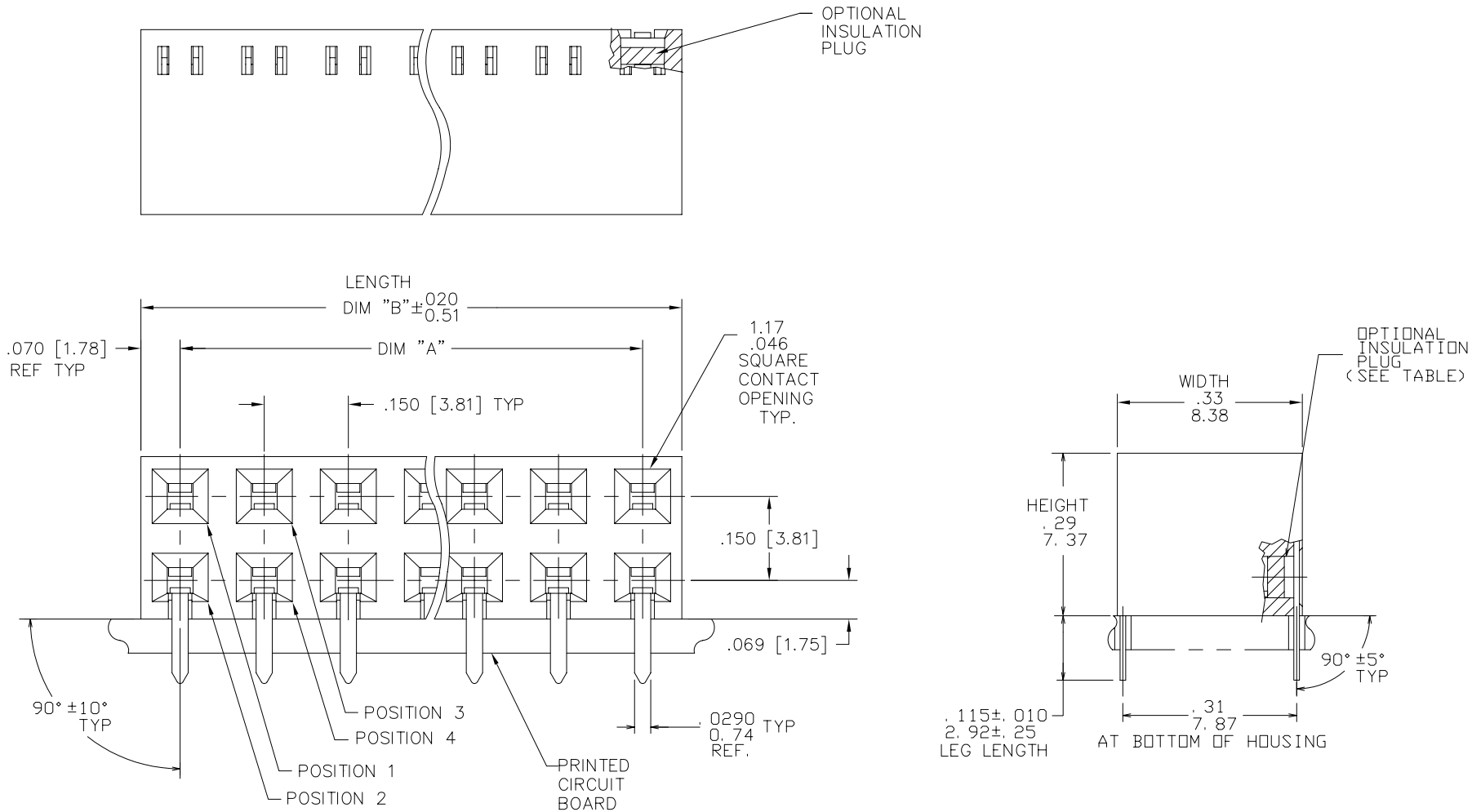




FCIconnect.com

Copyright FCI

PRODUCT NUMBER
SEE TABLE



mat'l. code				surface ISO 1302 <input checked="" type="checkbox"/>	tolerance ISO 406 ISO 1101	projection 	product family CARD CONN
ltr	ecn no	dr	date	tolerances unless otherwise specified		INCH/MM	title
G	C50102	SAR	1/5/96	angles	linear .xx \pm .01/.3		2 x.150/3.81 SELECT LOADED
H	V61640	MDF	11/25/96		.xxx \pm .005/.13	scale 4:1	HORIZ. CARD CONNECTOR
J	V71000	LSS	12/23/97	0° \pm 2°	.xxxx \pm .0020/.051		
K	V02386	AZ	12/23/97	dr	J. SHREINER 3/13/91		dwg no sheet 1 of 3 size
L	M05-0181	MHT	8/22/05	enrg	M. HAHN 3/13/91		67620 A3
M	M06-0117	AEA	06/27/06	chr	M. HAHN 3/13/91		
N	M07-0137	MHT	2/26/07	appd	M. HAHN 3/13/91		
sheet	revision	N	N	N			type Product Customer Drawing
index	sheet	1	2	3			

form: A3

(8) THIS PRODUCT HAS 100% TIN PLATING IN THE INTERFACE AND HAS NOT BEEN TESTED FOR WISKER GROWTH IN ALL INTERCONNECT REQUIREMENTS

6



FCIconnect.com

Copyright FCI

PRODUCT NO.
SEE TABLE

PRODUCT NUMBER	NO OF POS	DIM A	DIM B	INSUL PLUG	UNLOADED POSITIONS	MAT'L	LEAD FREE OPTION
67620-001	2X12	41.91/1.65	45.47/1.79	YES	3,11,12,13,14	NOTE 2	NOTE 6,7
67620-002	2X32	118.11/4.65	121.67/4.79	NO	5,40,41,42,43,44,45,46,47,49,50,51,52,53,54,55,56,57,58,59,60		
67620-003	2X43	160.02/6.30	163.58/6.44	NO	4,5,6,8,9,10,11,12,15,16,18,19,20,23,24,25,26,28,29,30,31,33,34,36,37,39,41,42,43,44,59,65,66,69,70,72,73,74,75,76,77,78,80,81		
67620-004	2X43	160.02/6.30	163.58/6.44	NO	3,4,5,6,8,9,12,26,28,29,30,31,33,34,36,37,38,39,40,41,48,50,52,53,76,77,80,81,84		
67620-005	2X43	160.02/6.30	163.58/6.44	NO	3,4,5,6,7,8,13,14,17,21,22,23,25,26,30,31,32,33,34,36,37,39,40,42,43,44,51,52,69,77		
67620-006	2X43	160.02/6.30	163.58/6.44	NO	3,4,5,7,8,13,17,21,27,28,29,30,31,32,33,34,35,38,39,40,41,42,46,47,48,50,51,52,53,54,57,58,60,61,62,63,64,68,69,71,72,74,75,76,78,79,80,81,83,84		
67620-007	2X43	160.02/6.30	163.58/6.44	NO	3,4,6,7,8,9,10,11,12,14,17,22,62,66,69,77		
67620-008	2X43	160.02/6.30	163.58/6.44	NO	3,4,6,8,9,12,16,17,20,24,25,26,27,28,29,30,31,32,34,35,36,39,40,41,42,43,44,46,48,51,60,62,64,68,69,72,73,74,75,76,78,80,81,84	NOTE 2	
67620-009	2X19	68.58/2.700	72.14/2.84	YES	5,6,11,12,17,18,23,24,29,30,35,36	NOTE 5	NOTE 6,7

mat'l. code				surface ISO 1302 <input checked="" type="checkbox"/>		tolerance ISO 406 ISO 1101		projection 		product family CARD CONN			
ltr	ecn no	dr	date	tolerances unless otherwise specified						title			
N				angles	linear	.XX ±.01/.3 .XXX ±.005/.13 .XXXX ±.0020/.051		INCH/MM		2 x.150/3.81 SELECT LOADED HORIZ. CARD CONNECTOR			
				0°±2°				scale 4:1		dwg no sheet 3 of 3 size			
				dr	J. SHREINER	3/13/91				67620 A3			
				enr	M. HAHN	3/13/91							
				chr	M. HAHN	3/13/91							
				appd	M. HAHN	3/13/91							
sheet index	revision sheet												

form: A3