



Insulated Terminals Teflon, Unassembled

*Teflon is a registered trademark of Dupont



Double Turret One Sided/Round Pin

Refer to Figure 4487

Unassembled Teflon*

Part No.	Board Thick	Mounting Hole Dia. ^{+0.03} _{-.001}	X	Y	Z	Swage Tool	DWV
4487A	.031	.126	.060	.112	.311	4487	1900
4487B	.062	.126	.060	.112	.311	4487	1900

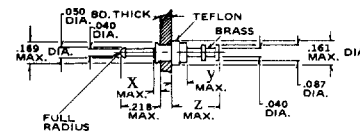


Fig. 4487

Refer to Figure 4437

Part No.	Board Thick	Mounting Hole Dia. ^{+0.03} _{-.001}	X	Y	Z	Swage Tool	DWV
4437A	.031	.142	.081	.116	.312	4437	2000
4437B	.062	.142	.081	.116	.312	4437	2000
4437C	.094	.142	.081	.116	.312	4437	2000

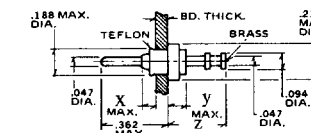


Fig. 4437

Round Pins, One Side

Refer to Figure 4480

Part No.	Board Thick	Mounting Hole Dia. ^{+0.03} _{-.001}	X	Y	Z	Swage Tool	DWV
4480A	.031	.126	.060	.112	.282	4480	1900
4480B	.062	.126	.060	.112	.282	4480	1900

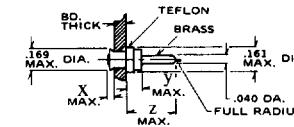


Fig. 4480

Refer to Figure 4402

Part No.	Board Thick	Mounting Hole Dia. ^{+0.03} _{-.001}	X	Y	Z	Swage Tool	DWV
4402A	.031	.142	.081	.116	.312	4402	2000
4402B	.062	.142	.081	.116	.312	4402	2000
4402C	.094	.142	.081	.116	.312	4402	2000

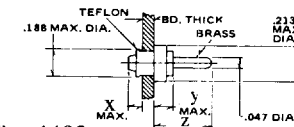


Fig. 4402

Round Pins, Both Sides

Refer to Figure 4485

Part No.	Board Thick	Mounting Hole Dia. ^{+0.03} _{-.001}	X	Y	Z	Swage Tool	DWV
4485A	.031	.126	.060	.112	.272	4485	1900
4485B	.062	.126	.060	.112	.272	4485	1900

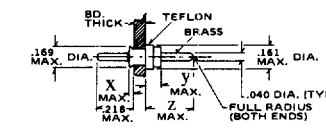


Fig. 4485

Refer to Figure 4401

Part No.	Board Thick	Mounting Hole Dia. ^{+0.03} _{-.001}	X	Y	Z	Swage Tool	DWV
4401A	.031	.142	.081	.116	.312	4401	2000
4401B	.062	.142	.081	.116	.312	4401	2000
4401C	.094	.142	.081	.116	.312	4401	2000

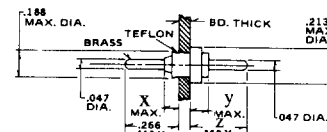


Fig. 4401

Standard Plating Suffix to Part Number

Terminal
-7 (Au over Cu)

See Page 93 for all plating options.

TOLERANCE: .xxx ±.010, .xx ±.016 (ALL DIMS. BEFORE PLATING)