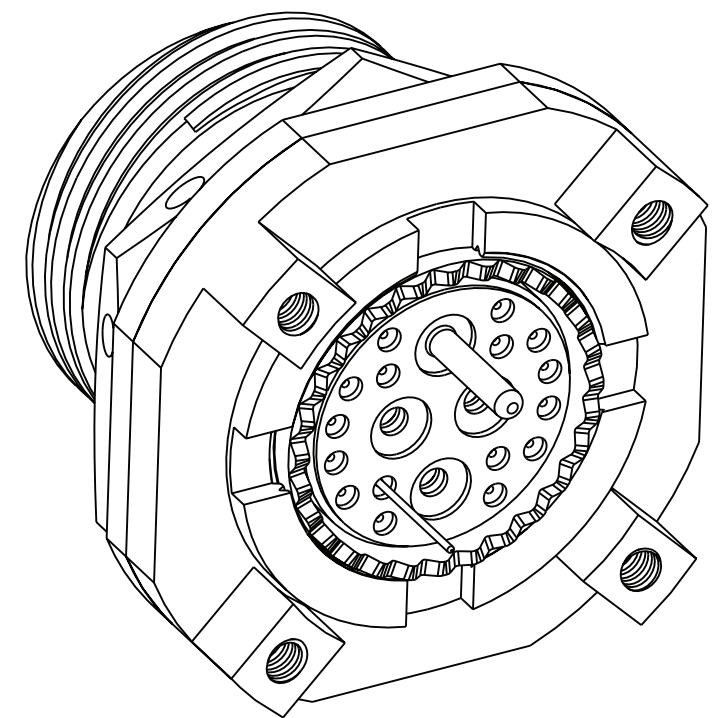
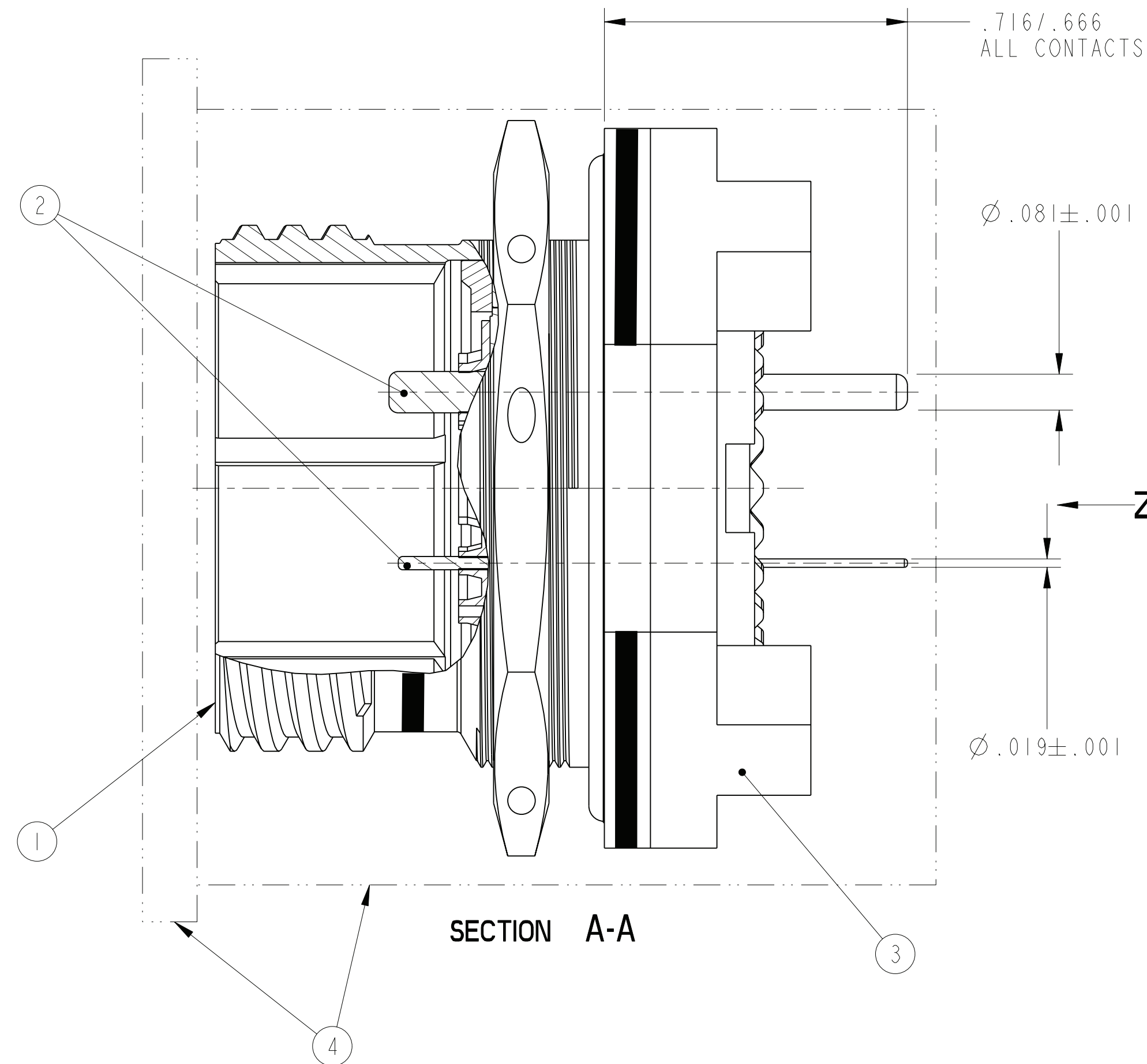
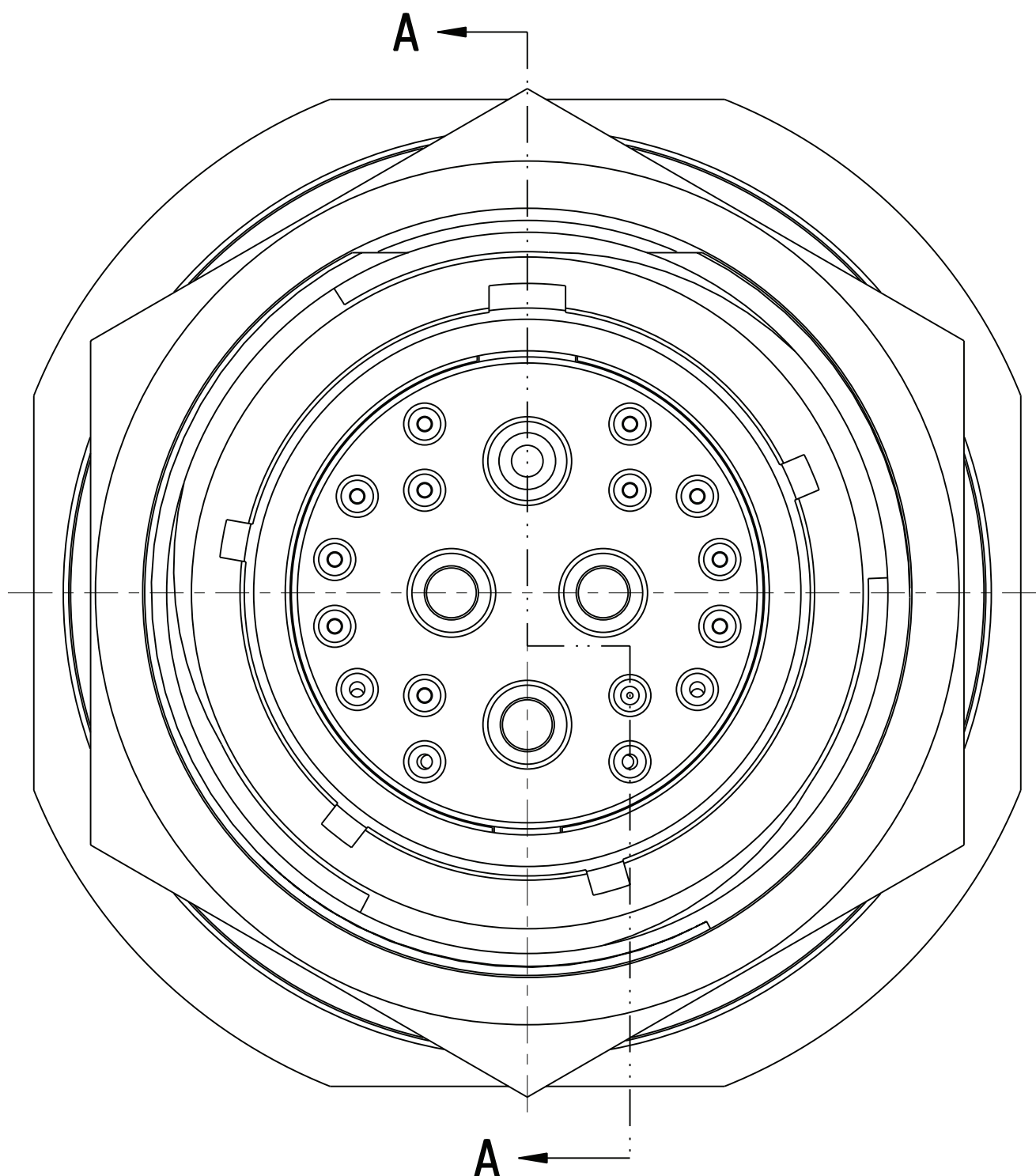


REV. A	SHEET 1 OF 2	10-565995-996
REVISIONS		
LTR	DESCRIPTION	DATE
A	INITIAL RELEASE	

FOR UNIT ILLUSTRATION AND DIMENSIONAL DATA SEE 10-536197-DS TYPE I AND 10-658266



POS	QTY	PART NUMBER	DESCRIPTION	NOTE
4	1	SEE COLUMN	CAP/CONTAINER	
3	1	10-658266-14G	FLANGE, REMOVABLE	5
2	2	SEE COLUMN	CONTACT	
1	1	SEE COLUMN	CONNECTOR	

UNLESS OTHERWISE SPECIFIED
 LINEAR DIMENSIONS ARE IN INCHES
 TOLERANCES:
 .XXXX = ±.0005 ANGLES= ±2°
 .XXX = ±.010
 .XX = ±.03
 .X = ±.1
 DIM. & TOL. PER ASME Y14.5M;
 DRM PER MIL-DTL-31000;
 OTHER Amphenol Sds. PER 9-3800
 LEGENDS:
 = FLAG NOTE CALL OUT REFERENCE ONLY

SPECIFICATIONS	
MATERIAL SPEC.	N/A
PROCESS SPEC.	SEE NOTE 3

APPROVALS: PREPARED BY D. ALGER, ENGINEER IN CHARGE D. FREAR, DESIGN MANAGER E. SHEPLER, DESIGN ACTIVITY GROUP MILAERO. DATE: 21-OCT-10.

THIRD ANGLE PROJECTION

AMPHENOL CORPORATION
 40-60 DELAWARE AVENUE
 SIDNEY, N.Y. 13838

KIT, CONNECTOR, RCPT., TYPE T3F-1917-20P(), PCB CONTACT, REMOVABLE FLANGE

SIZE C	CAGE CODE 77820	DOCUMENT NO. 10-565995-996	REV. A
--------	-----------------	----------------------------	--------

SCALE: 4.0 REF: 88-552650/659 SHEET 1 OF 2

NOTES: SEE SHEET 2
 THE USE OF THIS DOCUMENT IS UNLIMITED. HOWEVER, DOCUMENTS REFERENCED HEREON MAY CONTAIN LIMITED RIGHTS DATA.

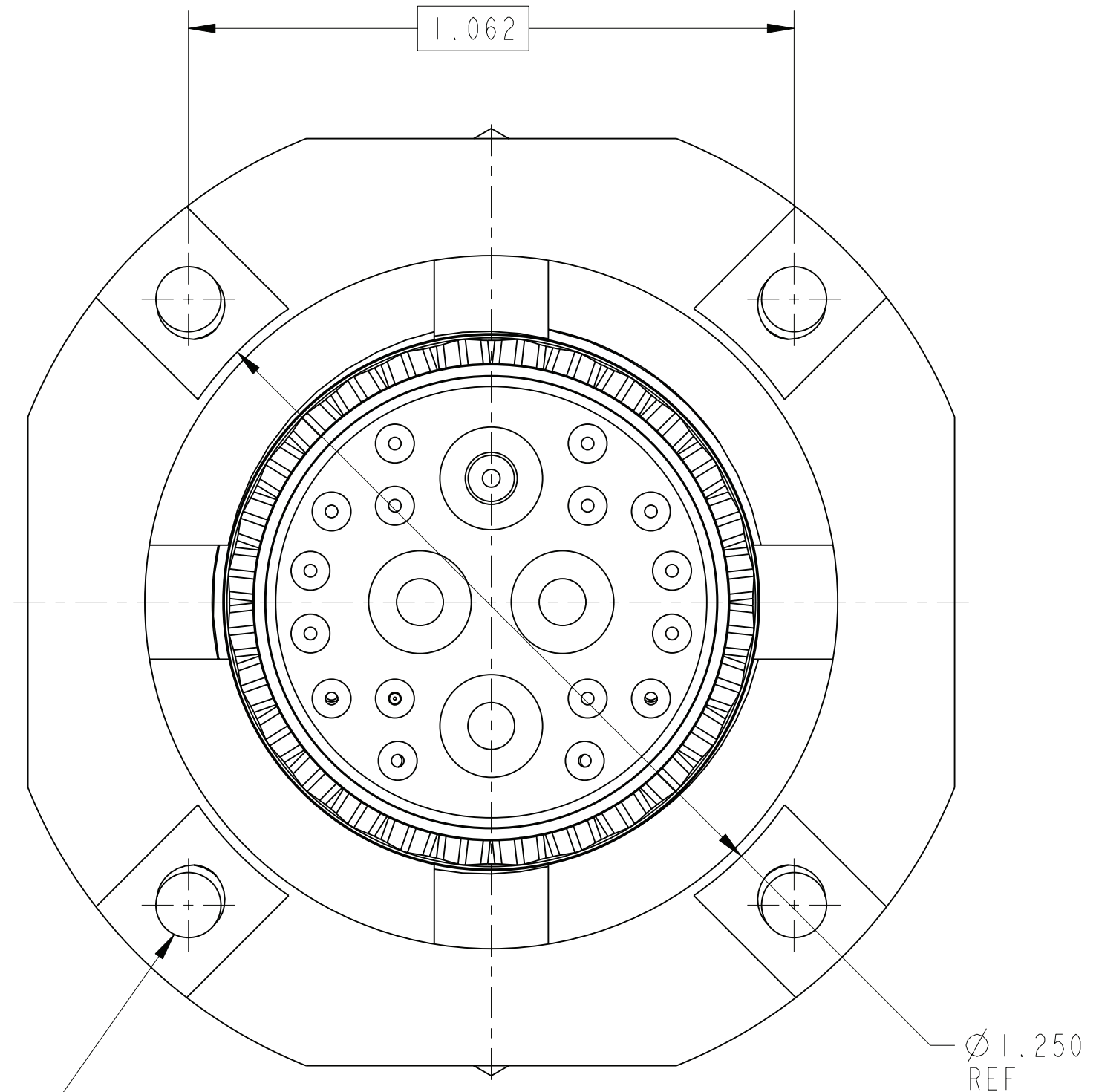
N/A	PRO/ENGINEER INFORMATION
N/A	Pro/e Model Used: 10-565995-905.ASSEM
N/A	Drawing Name: 10-565995-996

10-565995-996 SHEET 1 OF 2 REV. A

10-565995-996 SHEET 1 OF 2 REV. A

4		3		2		
KIT PART NUMBER	CONNECTOR PART NUMBER	KIT TYPE	PCB CONTACT PART NUMBER	QTY.	TV REF NUMBER	CAP/CONTAINER
10-565995-996N	T3F-1917-20PN-105	II	10-597502-045 10-407552-255	4 16	TV07RF-17-20P (LC)	10-576238-001 10-576237-001
10-565995-996A	T3F-1917-20PA-105				TV07RF-17-20PA(LC)	
10-565995-996B	T3F-1917-20PB-105				TV07RF-17-20PB(LC)	
10-565995-996C	T3F-1917-20PC-105				TV07RF-17-20PC(LC)	
10-565995-996D	T3F-1917-20PD-105				TV07RF-17-20PD(LC)	
10-565995-996E	T3F-1917-20PE-105				TV07RF-17-20PE(LC)	

ALTERNATE SHELL ROTATION
 CONNECTOR LESS STAMPING
 SEE NOTE 4 FOR STAMPING REQUIREMENT
 SEE NOTE 1



6. THE 10-565995-996N CONNECTOR INTERFACE IS IN COMPLIANCE WITH EN3645-F7EN20MN.
5. AFTER CONTACTS AND FLANGE HAVE BEEN INSTALLED, PLACE CONNECTOR INTO CONTAINER AND CAP. TO INSURE CAP LOCATION APPLY TAPE IF NEEDED. CARE MUST BE TAKEN NOT TO BEND THE CONTACTS.
4. STAMP "AMPHENOL", PART NUMBER, DATE CODE (9-3895), AND LOT NUMBER PER 9-5788
 EXAMPLE:
 AMPHENOL 10-565995-996B 1042 10001000
3. PROCESS SPEC:
 9-3895, 9-5788
2. PACKAGE PER PRODUCTION PROCESS SHEET.
1. KIT TYPE I CONTACTS SHIPPED UNASSEMBLED.
 KIT TYPE II CONTACTS SHIPPED ASSEMBLED IN CONNECTOR.

NOTES:
 THE USE OF THIS DOCUMENT IS UNLIMITED. HOWEVER, DOCUMENTS REFERENCED HEREON MAY CONTAIN LIMITED RIGHTS DATA.

RELEASED / Nov . 11 2010, 8:56:05 AM

SIZE C	CAGE CODE 77820	DOCUMENT NO. 10-565995-996	REV. A
SCALE: 4.0	REF. 88-552650/659	SHEET 2 OF 2	

10-565995-996 DOCUMENT NO. SHEET 2 OF 2 REV. A

10-565995-996 DOCUMENT NO. SHEET 2 OF 2 REV. A