



5 mm (.197") CENTER

Approvals: UL - It. 482

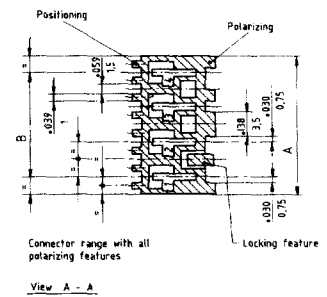
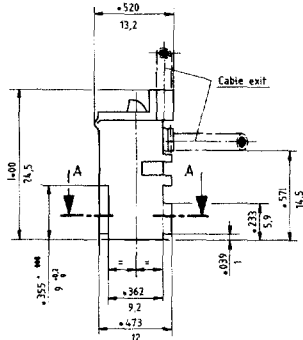
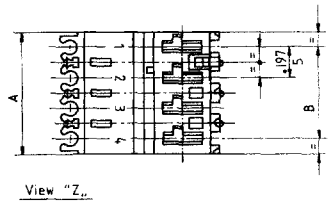
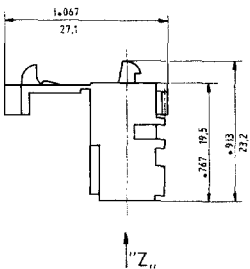
TL 2 Insulation Displacement Connector for 1/4" Tabs

The TL 2 connector system was developed for applications according to European appliance manufactures specification "RAST 5". STOCKO designed variable modular production tooling capable of accomadating various other versions which are not specifically covered by "RAST 5" standard specifigatons.

Application technology:

- Hand/Mechanical tools
- Semi and Full automatic machines

8400 Series



Specifications

Contact spacing:	5 mm (.197")
Positions:	1-12
Termination:	IDC
Wire size:	AWG 20-18
Insulation diameter:	2.4 mm (max. .094")
Hardness of insulation:	90 Shore ± 2
Type of wire:	stranded

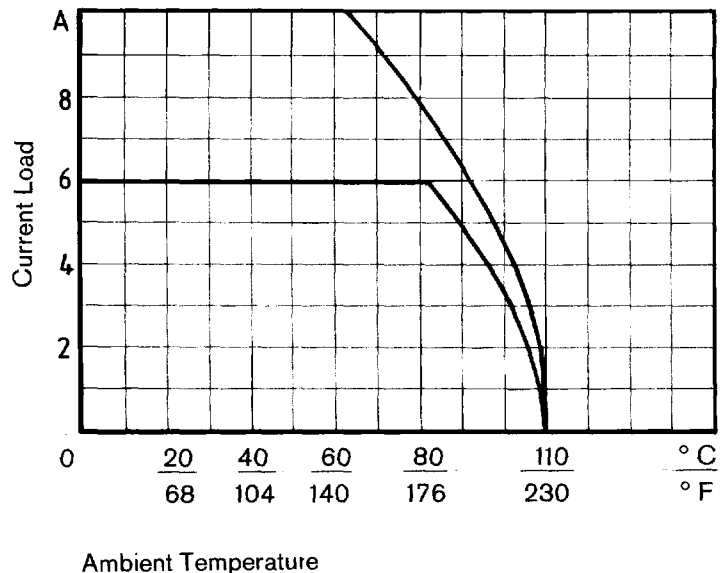
Materials

Insulator:	Polyamid 6.6
UL rating:	UL 94 V-2 / UL 94 V-O
Contacts:	Phosphor bronze
Plating:	Tin plated
Polarisation/coding:	integrated
Maximum current load:	6 A at 60° C / 140° F Ambient temperature (16 A upon request)
Dielectrical strength:	> 3000 V _{eff}
Insulation resistance:	> 10 ¹² Ω
Contact resistance:	< 5 m Ω
Smallest creepage distance:	≥ 3 mm (.118")
Nom. voltage:	250 V _{eff}
Operating temperature:	- 40° C to + 105° C - 40° F to + 221° F

insertion force:	1 x < 10 N
	10 x < 6 N
Withdrawal force:	1 x < 5 N
	10 x > 3.5 N

Approvals: DIN VDE 0627
DIN 41611 Part 6
SEV, ÖVE, CSA, UL, SEMKO, DEMKO

Derating Curve



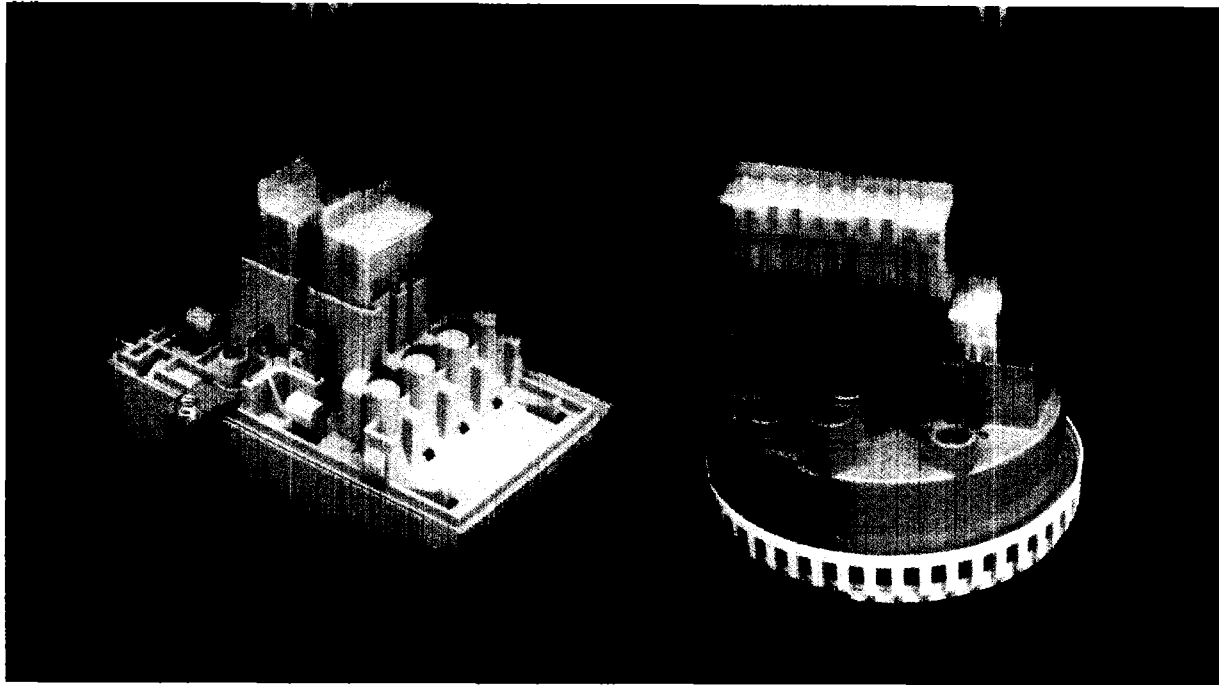


5 mm (.197") CENTER

Approvals: UL - It. 482

TL 2 Insulation Displacement Connector for 1/4" Tabs

Typical TL-2 application examples on appliance control components.



Dimensions		Ordering Information		Dimensions		Ordering Information	
A (Inch - mm)	B (Inch - mm)	Pos.	Part Number	A (Inch - mm)	B (Inch - mm)	Pos.	Part Number
.197 - 5		1	MTL 2 F 8401-6-001 -101	.787 - 20	.591 - 15	4	MTL 2 F 8404-6-00 A -404
.394 - 10	.197 - 5	2	MTL 2 F 8402-6-00 A -202	.787 - 20	.591 - 15	4	MTL 2 F 8404-6-00 B -404
.394 - 10	.197 - 5	2	MTL 2 F 8402-6-00 B -202	.787 - 20	.591 - 15	4	MTL 2 F 8404-6-00 C -404
.394 - 10	.197 - 5	2	MTL 2 F 8402-6-00 C -202	.787 - 20	.591 - 15	4	MTL 2 F 8404-6-00 D -404
.394 - 10	.197 - 5	2	MTL 2 F 8402-6-00 D -202	.787 - 20	.591 - 15	4	MTL 2 F 8404-6-00 E -404
.394 - 10	.197 - 5	2	MTL 2 F 8402-6-00 E -202	.787 - 20	.591 - 15	4	MTL 2 F 8404-6-00 F -404
.394 - 10	.197 - 5	2	MTL 2 F 8402-6-00 F -202	.787 - 20	.591 - 15	4	MTL 2 F 8404-6-00 G -404
.394 - 10	.197 - 5	2	MTL 2 F 8402-6-00 G -202	.984 - 25	.787 - 20	5	MTL 2 F 8405-6-00 A -505
.394 - 10	.197 - 5	2	MTL 2 F 8402-6-00 H -202	.984 - 25	.787 - 20	5	MTL 2 F 8405-6-00 B -505
.394 - 10	.197 - 5	2	MTL 2 F 8402-6-00 I -202	.984 - 25	.787 - 20	5	MTL 2 F 8405-6-00 C -505
.394 - 10	.197 - 5	2	MTL 2 F 8402-6-00 J -202	.984 - 25	.787 - 20	5	MTL 2 F 8405-6-00 D -505
.394 - 10	.197 - 5	2	MTL 2 F 8402-6-00 K -202	1.181 - 30	.984 - 25	6	MTL 2 F 8406-6-00 A -606
.394 - 10	.197 - 5	2	MTL 2 F 8402-6-00 L -202	1.181 - 30	.984 - 25	6	MTL 2 F 8406-6-00 B -606
.394 - 10	.197 - 5	2	MTL 2 F 8402-6-00 M -202	1.181 - 30	.984 - 25	6	MTL 2 F 8406-6-00 C -606
.394 - 10	.197 - 5	2	MTL 2 F 8402-6-00 N -202	1.181 - 30	.984 - 25	6	MTL 2 F 8406-6-00 D -606
.394 - 10	.197 - 5	2	MTL 2 F 8402-6-00 O -202	1.181 - 30	.984 - 25	6	MTL 2 F 8406-6-00 E -606
.394 - 10	.197 - 5	2	MTL 2 F 8402-6-00 P -202	1.378 - 35	1.181 - 30	7	MTL 2 F 8407-6-00 A -707
.394 - 10	.197 - 5	2	MTL 2 F 8402-6-00 Q -202	1.378 - 35	1.181 - 30	7	MTL 2 F 8407-6-00 B -707
.591 - 15	.394 - 10	3	MTL 2 F 8403-6-00 A -303	1.575 - 40	1.378 - 35	8	MTL 2 F 8408-6-00 C -808
.591 - 15	.394 - 10	3	MTL 2 F 8403-6-00 B -303	1.575 - 40	1.378 - 35	8	MTL 2 F 8408-6-00 D -808
.591 - 15	.394 - 10	3	MTL 2 F 8403-6-00 C -303	1.772 - 45	1.575 - 40	9	MTL 2 F 8409-6-00 A -909
.591 - 15	.394 - 10	3	MTL 2 F 8403-6-00 D -303	1.772 - 45	1.575 - 40	9	MTL 2 F 8409-6-00 B -909
.591 - 15	.394 - 10	3	MTL 2 F 8403-6-00 E -303	1.772 - 45	1.575 - 40	9	MTL 2 F 8409-6-00 C -909
.591 - 15	.394 - 10	3	MTL 2 F 8403-6-00 F -303	1.772 - 45	1.575 - 40	9	MTL 2 F 8409-6-00 D -909
.591 - 15	.394 - 10	3	MTL 2 F 8403-6-00 G -303	1.969 - 50	1.772 - 45	10	MTL 2 F 8410-6-00 A -1010
.591 - 15	.394 - 10	3	MTL 2 F 8403-6-00 H -303	2.165 - 55	1.969 - 50	11	MTL 2 F 8411-6-00 A -1111
.591 - 15	.394 - 10	3	MTL 2 F 8403-6-00 I -303	2.165 - 55	1.969 - 50	11	MTL 2 F 8411-6-00 B -1111
.591 - 15	.394 - 10	3	MTL 2 F 8403-6-00 J -303	2.165 - 55	1.969 - 50	11	MTL 2 F 8411-6-00 C -1111
.591 - 15	.394 - 10	3	MTL 2 F 8403-6-00 K -303	2.362 - 60	2.165 - 55	11	MTL 2 F 8412-6-001 -1212