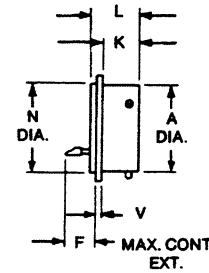
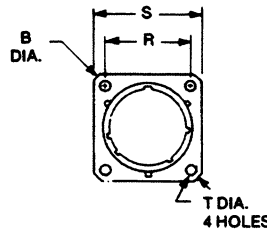
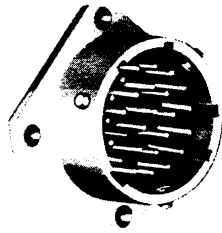


Box Mounting Receptacles

KPT02H



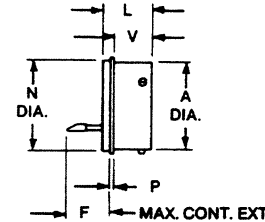
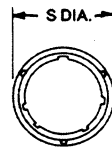
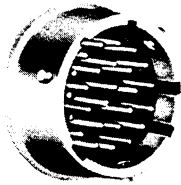
KPTH/
PVAH

Shell Size	A		F	K	L	N		R	S	T	V
	+ .001 (0.03) - .005 (0.13)	± .020 (0.51)				+ .001 (0.03) - .005 (0.13)	± .005 (0.13)				
8	.473 (12.01)	1.062 (26.97)	.344 (8.74)	.438 (11.13)	.546 (13.87)	.562 (14.27)	.594 (15.09)	.812 (20.62)	.120 (3.05)	.062 (1.57)	
10	.590 (14.99)	1.250 (31.75)	.344 (8.74)	.438 (11.13)	.546 (13.87)	.672 (17.07)	.719 (18.26)	.938 (23.83)	.120 (3.05)	.062 (1.57)	
12	.750 (19.05)	1.375 (34.82)	.344 (8.74)	.438 (11.13)	.546 (13.87)	.781 (19.84)	.812 (20.62)	1.031 (26.19)	.120 (3.05)	.062 (1.57)	
14	.875 (22.22)	1.500 (38.10)	.344 (8.74)	.438 (11.13)	.546 (13.87)	.906 (23.01)	.906 (22.99)	1.125 (28.58)	.120 (3.05)	.062 (1.57)	
16	1.000 (25.40)	1.625 (41.28)	.344 (8.74)	.438 (11.13)	.546 (13.87)	1.031 (26.19)	.969 (24.62)	1.219 (30.96)	.120 (3.05)	.062 (1.57)	
18	1.125 (28.58)	1.750 (44.45)	.344 (8.74)	.438 (11.13)	.546 (13.87)	1.156 (29.36)	1.062 (26.97)	1.312 (33.32)	.120 (3.05)	.062 (1.57)	
20	1.250 (31.75)	1.875 (47.62)	.344 (8.74)	.468 (11.89)	.608 (15.44)	1.250 (31.75)	1.156 (29.36)	1.438 (36.53)	.120 (3.05)	.094 (2.39)	
22	1.375 (34.92)	2.050 (52.07)	.344 (8.74)	.468 (11.89)	.640 (16.26)	1.375 (34.92)	1.250 (31.75)	1.562 (39.67)	.120 (3.05)	.094 (2.39)	
24	1.500 (38.10)	2.250 (57.15)	.320 (8.13)	.500 (12.70)	.673 (17.09)	1.500 (38.10)	1.375 (34.92)	1.687 (42.85)	.147 (3.73)	.094 (2.39)	

Solder Mounting Receptacles

MS 3113H

KPT01H



Shell Size	A		F	L	N		P	S		V
	+ .001 (0.03) - .005 (0.13)				+ .001 (0.03) - .005 (0.13)	± .005 (0.13)		+ .010 (0.25) - .016 (0.41)	± .005 (0.13)	
8	.473 (12.01)		.370 (9.40)	.546 (13.87)	.562 (14.27)	.031 (0.79)	.631 (16.03)	.421 (10.69)		
10	.590 (14.99)		.370 (9.40)	.546 (13.87)	.672 (17.07)	.031 (0.79)	.756 (19.20)	.421 (10.69)		
12	.750 (19.05)		.370 (9.40)	.546 (13.87)	.781 (19.84)	.031 (0.79)	.850 (21.59)	.421 (10.69)		
14	.875 (22.22)		.370 (9.40)	.546 (13.87)	.906 (23.01)	.031 (0.79)	.975 (24.76)	.421 (10.69)		
16	1.000 (25.40)		.370 (9.40)	.546 (13.87)	1.031 (26.19)	.031 (0.79)	1.100 (27.94)	.421 (10.69)		
18	1.125 (28.58)		.370 (9.40)	.546 (13.87)	1.156 (29.36)	.031 (0.79)	1.224 (31.09)	.421 (10.69)		
20	1.250 (31.75)		.370 (9.40)	.608 (15.44)	1.250 (31.75)	.031 (0.79)	1.318 (33.48)	.485 (12.32)		
22	1.375 (34.92)		.370 (9.40)	.640 (16.26)	1.375 (34.92)	.031 (0.79)	1.444 (36.68)	.485 (12.32)		
24	1.500 (38.10)		.340 (8.64)	.673 (17.09)	1.500 (38.10)	.031 (0.79)	1.569 (39.85)	.518 (13.16)		