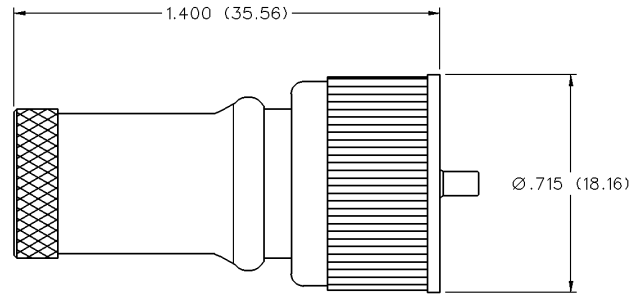
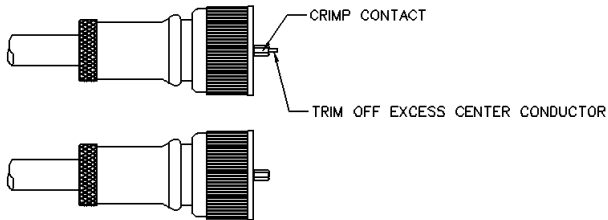
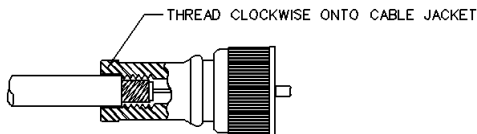
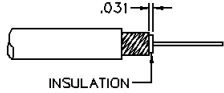
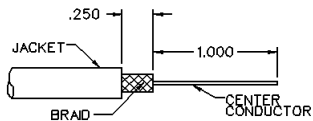


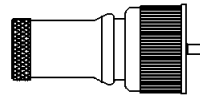
UHF Straight Twist-On Plug - 1 Piece



PART NUMBER	CABLE TYPE	WIRE GAUGE	WIRE DECIMAL	JACKET O.D.
CPFI-259-2	RG-59	22	.0253 (0.64)	.220 (5.59)-.250 (6.35)



Part Number	Cable	Wire Gauge	Wire Decimal	Jacket O.D.
CPFI-259-2	RG-59, 62	22	.0253 (0.64)	.220 (5.59)-.250 (6.35)



STANDARD UHF PLUG (1 PIECE ASSEMBLY)

1. Identify connector parts. (1 piece)
2. Trim cable as shown. Taking care not to nick the center conductor or outer braid.
3. Use the fingernail to rotate the outer braids clockwise such that 1/32" of the insulation is bared. Then in the same direction rub the stray braids flat. (Stray or loose braids can cause shorts.)
4. Gently insert the center conductor down the back end of the connector.
5. Firmly push the cable home (a slight clockwise twist may help with insertion). Then screw the connector on the cable in a clockwise direction until it is snugly attached to the jacket.
6. Crimp the contact as shown and trim away any excess center conductor extending past the contact.

CABLE ASSEMBLY CAUTIONS: Series are designed for solid center conductor wire. RG-58 cable will need the center conductor tin dipped (ONLY if it is not a solid center conductor). This is necessary to provide extra support for step 5.

Note: Instructions for Plugs only. For twist-on jacks, follow BNC twist-on instructions on page 69.

UHF Connectors

Specifications



INCHES (MILLIMETERS)
CUSTOMER DRAWINGS AVAILABLE UPON REQUEST

The UHF connectors are low cost, general purpose units designed for low frequency system applications. These commercial quality connectors are equipped with threaded coupling interfaces for secure and reliable connections. The Standard UHF and Mini UHF connectors are not intermateable.

STANDARD UHF

Electrical Characteristics

Impedance: Nonconstant

Frequency range: 0-500 MHz

Working voltage: 500 volts RMS at sea level

Dielectric withstanding voltage: 1500 volts RMS at sea level

Insulation resistance: 5000 megohms minimum

Environmental Characteristics

Recommended temperature range: -55°C to +85°C

Mechanical Characteristics

Durability: 500 cycles

Cable retention: 20 lbs., RG-58 C/U cable

Materials

Body and coupling nut: Zinc or brass

Contact: Beryllium copper or brass

Crimp Sleeve: Brass

Insulator: Delrin®

Plating: Body - Nickel

Crimp sleeve - Nickel

Contact - Gold or nickel

* These values are typical and may not apply to all connectors.