

PRODUCT NUMBER

5 2 6 0 1 - X X X - X X X X LF

PLATING

S=15μ"[0.38μm]GOLD ON CONTACT AREA
100μ"[2.54μm]TIN ON TAIL
G=30μ"[0.76μm]GOLD ON CONTACT AREA
100μ"[2.54μm]TIN ON TAIL

LEAD FREE OPTION
NOTE 10,11,12

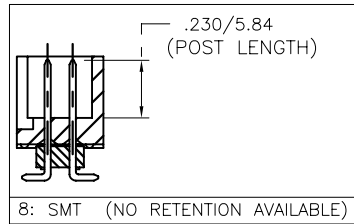
PACKAGE NOTE 5

RETENTION
R= RETENTIVE LEG (NOTE 6)

POLARIZATION
NOTE 9

TAIL	
1	.090/2.29 -OBS.
2	.142/2.84 -OBS.
4	.120/3.05
6	.150/3.81
7	.675/17.15 -OBS.
8	SMT

	TOTAL POSITIONS	HDR. STYLE
10	2 x 5	B
14	2 x 7	C
16	2 x 8	D
20	2 x 10	D
26	2 x 13	D
30	2 x 15	D
34	2 x 17	D
40	2 x 20	D
44	2 x 22	D
50	2 x 25	D
60	2 x 30	D

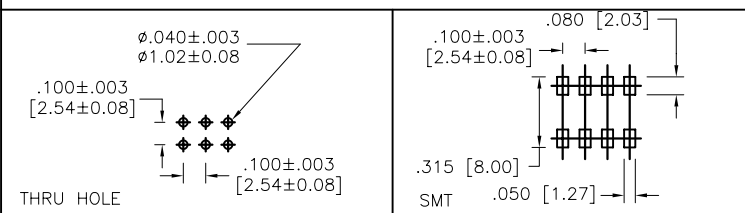
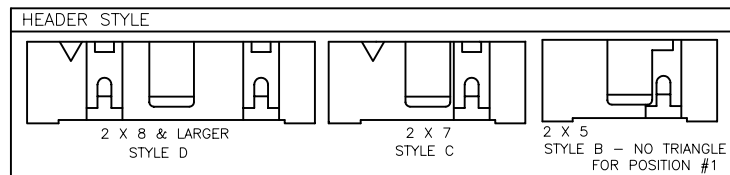
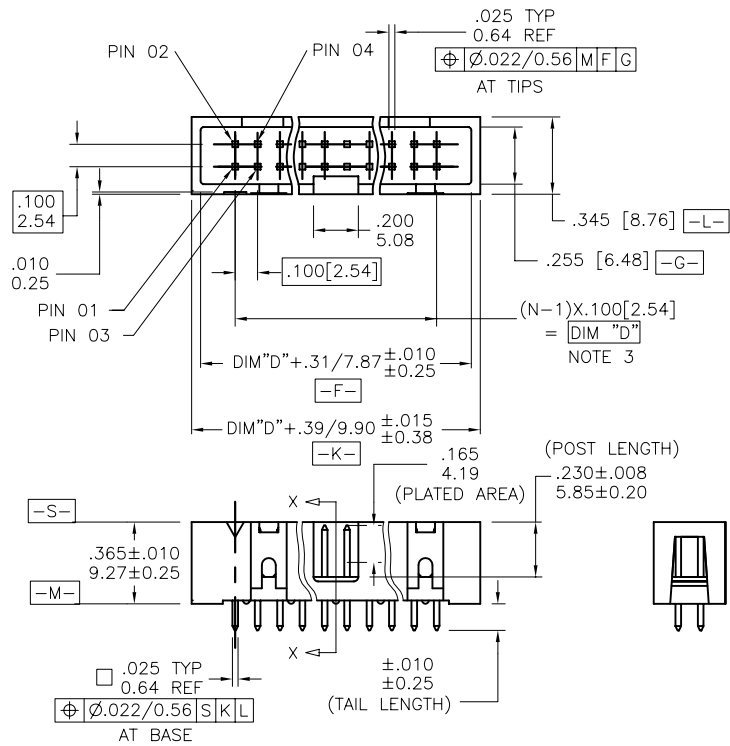


NOTES:

- HOUSING MAT'L: HIGH TEMPERATURE THERMOPLASTIC. UL94V-0
COLOR: BLACK
- PIN MATERIAL: PHOSPHOR-BRONZE
- TO DETERMINE DIMENSIONS:
N = NUMBER OF POSITIONS PER ROW
EXAMPLE: 10 POS.,(N-1) x .100[2.54]=.900[22.86]
- 3 LBS./1.36 KG MIN. RETENTION
- PACKAGED IN TRAYS,
PART NUMBER FOLLOWS BY "T" SUFFIX ARE PACKAGED
TAPE ON RELL WITH PACK-UP INSTALLED. VACUUM CAP TO BE
CENTRALLY LOCATED REGARDLESS OF NUMBER OF POSITIONS (SHEET 3)
- RETENTIVE LEG APPLICABLE TO TAIL LENGTHS .125/3.18 MAX.
5LB/2.3KG MAX INSERTION FORCE AND .25LB./1KG MIN RETENTION FORCE
PER RETENTIVE PIN USING .062/1.57 THICK CIRCUIT BOARD AND RECOMMENDED
HOLE PATTERN. RETENTIVE LOCATION AT THE DISCRETION OF THE MANUFACTURER.
RETENTION PIN MAY BE SHIFTED TO NEXT POSITION.
- OMIT FROM PRODUCT NUMBER IF THIS FEATURE IS NOT APPLICABLE.
- UNDERPLATING: 50μ"/1.27μm Ni.
- FOR POLARIZATION SPECIFY POSITION NUMBER (i.e. 03 = PIN 3) TO OMIT PIN.
OMIT FROM PRODUCT NUMBER IF THIS FEATURE IS NOT APPLICABLE.
- ADD "LF" SUFFIX AT THE END OF PART NUMBER FOR LEAD FREE OPTION.
- THE HOUSING WILL WITHSTAND EXPOSURE TO 260°C PEAK TEMPERATURE
FOR 15 SECONDS IN A WAVE SOLDER APPLICATION WITH A 1.5mm
MINIMUM THICK CIRCUIT BOARD. SEE APPLICATION NOTES/PROCEDURES
IF THEY ARE AVAILABLE.

THE HOUSING WILL WITHSTAND EXPOSURE TO 260°C PEAK TEMPERATURE
FOR 20 SECONDS IN A CONVECTION, INFRA-RED OR VAPOR PHASE
REFLOW OVEN. SEE APPLICATION NOTES/PROCEDURES IF THEY ARE AVAILABLE.
- THIS PRODUCT MEETS EUROPEAN UNION DIRECTIVES AND OTHER
COUNTRY REGULATION AS DESCRIBED IN GS-22-008.

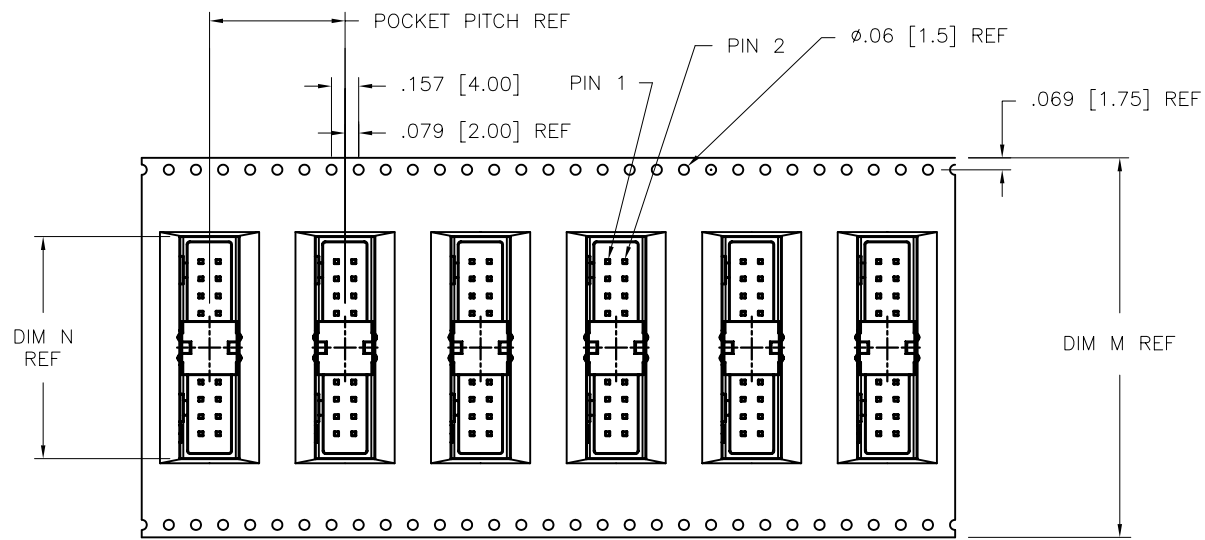
mat'l. code				surface ISO 1302		tolerance ISO 406 ISO 1101		projection		product family	
										QUICKIE	
ltr	ecn no	dr	date	tolerances unless otherwise specified				title			
J	M05-0042	MHT	3/09/05	angles	linear	.XX±.01/XX±0.3		INCH/MM		.100/2.54mm LOW PROFILE SHOROUDED VERTICAL HEADER	
K	M05-0044	MHT	3/10/05			.XXX±.005/XX±0.13		scale 1:1			
L	M06-0069	MHT	2/10/06	0°±2'			.XXX±.0020/XXX±0.051				
M	M06-0289	AGS	7/29/06	dr	D. INGRAM	7/7/99		dwg no		sheet 1 of 3 size	
N	M07-0074	MHT	1/25/07	engr	L. GREEN	7/12/99		52601		A3	
P	M07-0185	MHT	4/16/07	chr	L. GREEN	7/12/99		type		Product Customer Drawing	
R	M08-0010	MHT	1/11/08	appd	L. GREEN	7/21/99					
sheet	revision	R	R	R							
index	sheet	1	2	3							



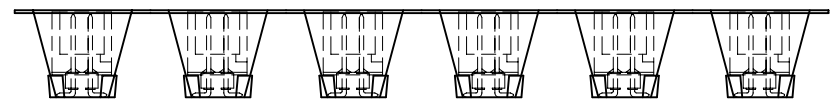
mat'l. code		surface	tolerance	projection	product family
ISO 1302		ISO 1302	ISO 406		QUICKIE
ltr	ecn no	dr	date	title	
R				.100/2.54mm LOW PROFILE SHOROUDED VERTICAL HEADER	
tolerances unless otherwise specified		angles	linear	INCH/MM	scale 1:1
		0° ± 2°	.XX ± .01 / .XX ± 0.3		
			.XXX ± .005 / .XX ± 0.13		
			.XXXX ± .0020 / .XXX ± 0.061		
		dr	D. INGRAM	7/7/99	
		engr	L. GREEN	7/12/99	
		chr	L. GREEN	7/12/99	
		appd	L. GREEN	7/21/99	
sheet	revision	FCJ			
index	sheet	type Product Customer Drawing			
		dwg no		sheet 2 of 3 size	A3
		52601			

PRODUCT No. NOTE 10	NO. OF POSITIONS	HSG. STYLE	POLARIZED POSITION	PACKAGING	POCKET PITCH	DIM M	DIM N
52601-S10-801	2 X 5	B	01	TAPE-ON-REEL	0.787/20.00	1.260/32.00	0.790/20.07
52601-S10-805	2 X 5	B	05	TAPE-ON-REEL	0.787/20.00	1.260/32.00	0.790/20.07
52601-S10-807	2 X 5	B	07	TAPE-ON-REEL	0.787/20.00	1.260/32.00	0.790/20.07
52601-S14-807	2 X 7	C	07	TAPE-ON-REEL	0.787/20.00	1.732/44.00	1.090/27.69
52601-S14-80714	2 X 7	C	07,14	TAPE-ON-REEL	0.787/20.00	1.732/44.00	1.090/27.69

* SPECIAL CUSTOMER



UN-REELING DIRECTION OF FEED →



mat'l. code		surface ISO 1302	tolerance ISO 406 ISO 1101	projection ISO 10110	product family QUICKIE
ltr	ecr no	dr	date	tolerances unless otherwise specified	title .100/2.54mm LOW PROFILE SHOROUDED VERTICAL HEADER
R				linear .XX±.01/XX±0.3 .XXX±.005/XX±0.13 .XXXX±.0020/XXX±0.051	INCH/MM scale 1:1
				angles 0°±2'	dwg no 52601
				dr D. INGRAM 7/7/99	sheet 3 of 3 size A3
				enr L. GREEN 7/12/99	type Product Customer Drawing
				chr L. GREEN 7/12/99	
				appd L. GREEN 7/21/99	
sheet index	revision sheet				



Copyright FCJ

form A3