

PRODUCT NO.	BUTTON LOCATION	PACKAGING SPEC	PRODUCT SPEC
10039633-00LLS	LEFT-LEFT	GS-14-742 ( WITH SHIELD COVER )	110-374

⑭	PIN	2X70	BERYLLIUM COPPER	CONTACT AREA GOLD FLASH (0.1MIN.) OVER 0.76 $\mu$ m Min. PALLADIUM NCKLE	
⑬	RECEPTACLE	1	GLASS FILLED LCP		UL94V-0
⑫	GASKET SET	2	NEOPRENE, NOTE 7		
⑪	GASKET	1	NEOPRENE, NOTE 7		
⑩	PCB	1	FR4	0.5 OZ. COPPER	
⑨	NUT	2	STEEL	CHROMATE-TREAMEAT	
⑧	GROUND TERMINAL	2	STAINLESS STEEL	-	
⑦	INSERT	2	Zn ALLOY	-	
⑥	SHIELD COVER (TOP/BOTTOM)	1/1	STEEL	Zn PLATING	
⑤	SHIELD	2	COPPER ALLOY	CONTACT AREA 0.05 $\mu$ m Min. GOLD OVER 1.0 $\mu$ m Min. NICKELL	
④	BUTTON	2	ABS	(S8 BUTTON : CAR-170, S13 BUTTON : CAR-201-1)	94HB
③	HDR HOUSING	2	GLASS FILLED LCP	-	UL94V-0
②	CASE	2	GLASS FILLED PBT	-	UL94V-0
①	PIN	2x68	COPPER ALLOY	CONTACT AREA 0.2 $\mu$ m Min. GOLD OVER 2.0 $\mu$ m Min. NICKELL	
No.	COMPONENT	QTY	MATERIAL	FINISH	REMARKS

## NOTES:

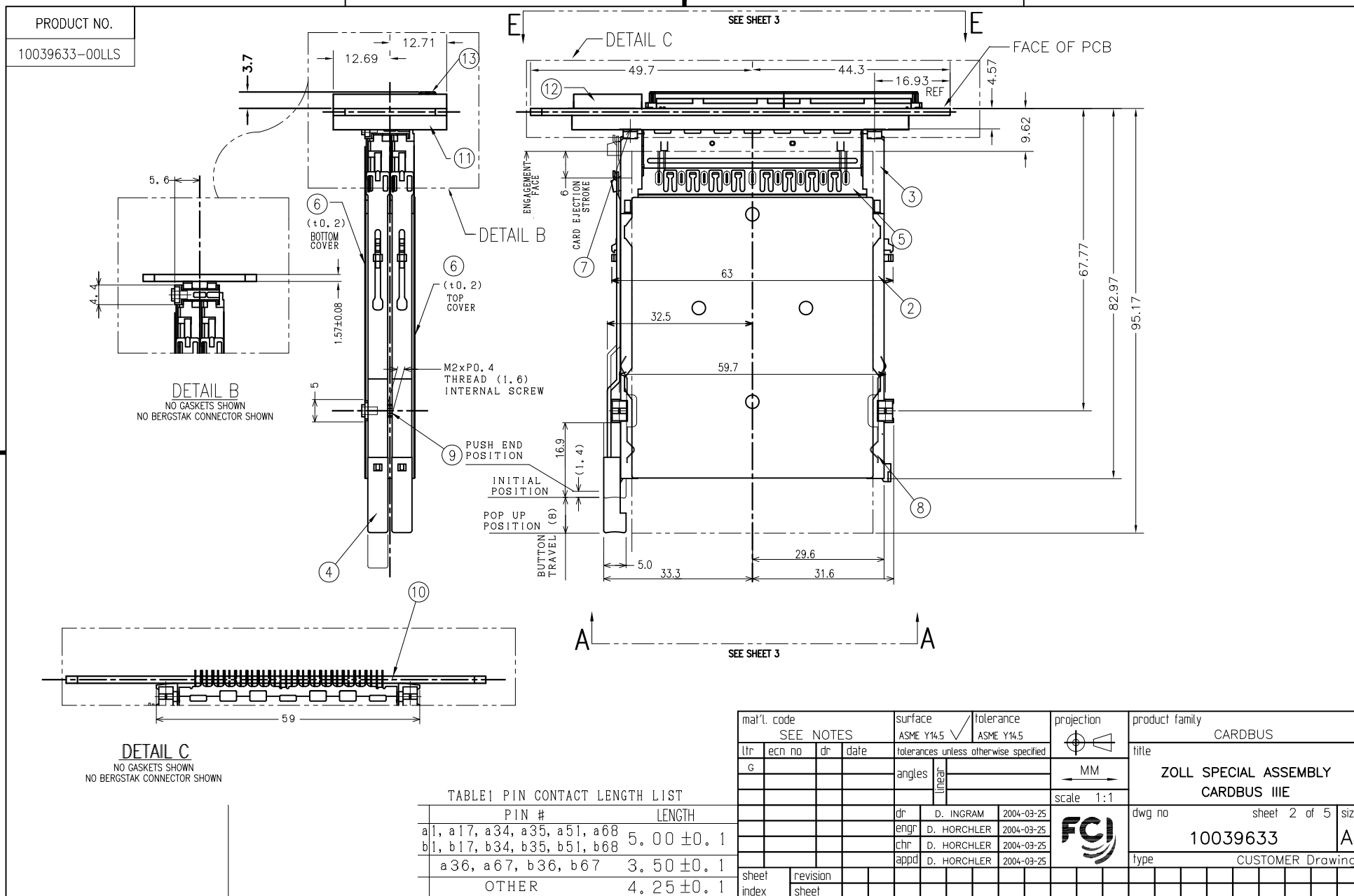
- THIS PRODUCT IS LEFT-LEFT BUTTON LOCATION STYLE.
- BODY COLOR IS BLACK, BUTTON COLOR IS BLACK
- SEE TABLE 1 FOR PIN CONTACT LENGTH.
- SHOW DIMENSIONS WITH IN 10mm OF END OF INSERTED CARD.
- TOP COVER IS ATTACHED.
- TOLERANCES ULESS OTHERWISE SPECIFIED:

BASIC DIMENSIONS	TOLERANCES
UP TO 10	$\pm 0.3$
ABOVE 10 TO 100	$\pm 0.5$
ABOVE 100	$\pm 0.8$
ANGULAR DIMENSIONS	$\pm 3^\circ$

- GASKET MATERIAL CLOSED CELL NEOPRENE SPONGE, COMPRESSION DEFLECTION 5-9 PSI, COMPRESSION SET 15-25% W/3M #415 ADHESIVE.
- LPI COATING ON PCB. ALL VIA HOLES MUST BE PLUGGED.

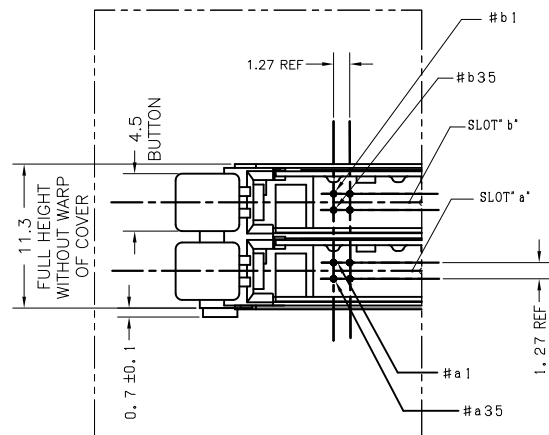
- SOLDERING MUST MEET IPC CLASS III STANDARDS.  
FINAL ASSEMBLIES TO BE 100% ELECTRICALLY TESTED  
FOR SHORTS AND OPENS.

mat'l. code	surface	tolerance	projection	product family
SEE NOTES	ASME Y14.5	ASME Y14.5		CARDBUS
ltr	ec'n no	dr	date	title
A	V04-0467	DAI	2005-05-13	ZOLL SPECIAL ASSEMBLY
B	V04-0579	DAI	2004-06-02	CARDBUS IIIE
C	V04-0891	LP	2004-09-14	
D	V05-0022	DAI	2005-01-13	
E	V05-0746	DAI	2005-08-12	
F	V06-0721	JRV	2006-07-26	
G	V09-0069	HTB	2009-02-13	
sheet index	revision	G	G	G
sheet	sheet	1	2	3

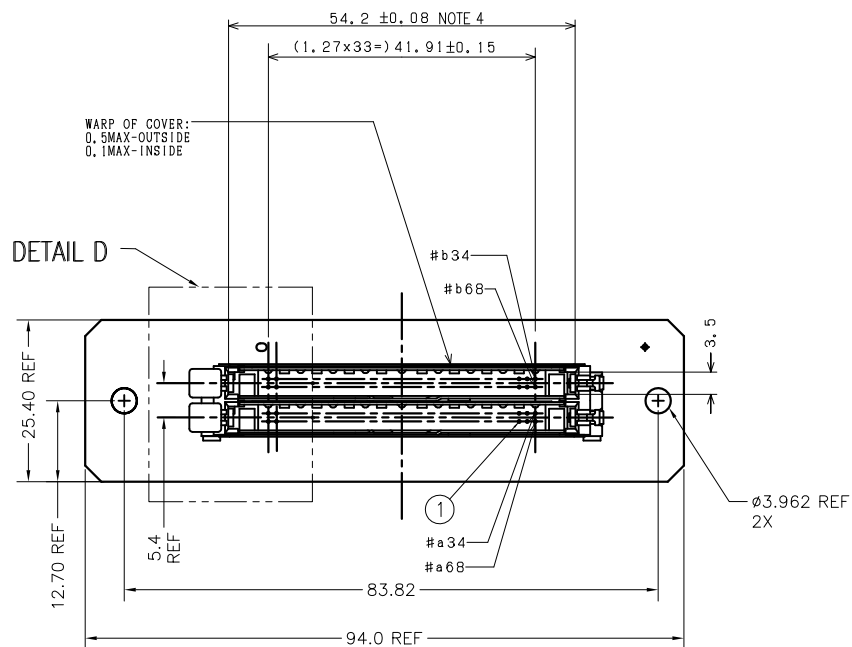


PRODUCT NO.

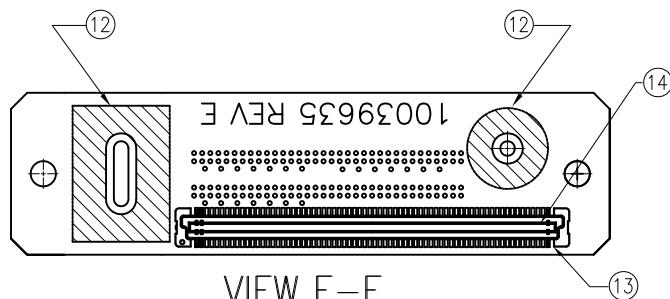
10039633-00LLS



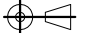
**DETAIL D**  
NO PCB SHOWN



**VIEW A-A**  
NO GASKETS SHOWN



**VIEW E-E**  
PCB LAYOUT SHOWING GASKET SET  
AND BERGSTAK CONNECTOR

mat'l. code SEE NOTES				surface ASME Y14.5	tolerance ASME Y14.5	projection 	product family CARDBUS
ltr	ecr no	dr	date	tolerances unless otherwise specified		MM	title ZOLL SPECIAL ASSEMBLY CARDBUS IIIE
G				angles	lines	scale 1:1	dwg no
							sheet 3 of 5
				dr	D. INGRAM	2004-03-25	size A4
				engr	D. HORCHLER	2004-03-25	10039633
				chr	D. HORCHLER	2004-03-25	type CUSTOMER Drawing
				appd	D. HORCHLER	2004-03-25	
sheet index	revision sheet						



HOLE NO.	PAD NO.	HOLE NO.	PAD NO.	HOLE NO.	PAD NO.	HOLE NO.	PAD NO.
GROUND1	S1	A35	S36	GROUND15	S71	B35	S106
GROUND2	S1	A36	S37	GROUND16	S71	B36	S107
GROUND3	S1	A37	S38	GROUND17	S71	B37	S108
GROUND4	S1	A38	S39	GROUND18	S71	B38	S109
GROUND5	S1	A39	S40	GROUND19	S71	B39	S110
GROUND6	S1	A40	S41	GROUND20	S71	B40	S111
GROUND7	S1	A41	S42	GROUND21	S71	B41	S112
		A42	S43			B42	S113
A1	S2	A43	S44	B1	S72	B43	S114
A2	S3	A44	S45	B2	S73	B44	S115
A3	S4	A45	S46	B3	S74	B45	S116
A4	S5	A46	S47	B4	S75	B46	S117
A5	S6	A47	S48	B5	S76	B47	S118
A6	S7	A48	S49	B6	S77	B48	S119
A7	S8	A49	S50	B7	S78	B49	S120
A8	S9	A50	S51	B8	S79	B50	S121
A9	S10	A51	S52	B9	S80	B51	S122
A10	S11	A52	S53	B10	S81	B52	S123
A11	S12	A53	S54	B11	S82	B53	S124

TABLE CONTINUED ON SHEET 5

mat'l. code				surface		tolerance		projection		product family	
SEE NOTES				ASME Y14.5		ASME Y14.5				CARDBUS	
ltr	ecn no	dr	date	tolerances unless otherwise specified						title	
G				angles						ZOLL SPECIAL ASSEMBLY CARDBUS IIIE	
				dr				D. INGRAM		2004-03-23	
				engr				D. HORCHLER		2004-03-23	
				chr				D. HORCHLER		2004-03-23	
				appd				D. HORCHLER		2004-03-23	
sheet index		revision sheet								dwg no 10039633 type CUSTOMER Drawing	



HOLE NO.	PAD NO.	HOLE NO.	PAD NO.	HOLE NO.	PAD NO.	HOLE NO.	PAD NO.
A12	S13	A54	S55	B12	S83	B54	S125
A13	S13	A55	S56	B13	S84	B55	S126
A14	S15	A56	S57	B14	S85	B56	S127
A15	S16	A57	S58	B15	S86	B57	S128
A16	S17	A58	S59	B16	S87	B58	S129
A17	S18	A59	S60	B17	S88	B59	S130
A18	S19	A60	S61	B18	S89	B60	S131
A19	S20	A61	S62	B19	S90	B61	S132
A20	S21	A62	S63	B20	S91	B62	S133
A21	S22	A63	S64	B21	S92	B63	S134
A22	S23	A64	S65	B22	S93	B64	S135
A23	S24	A65	S66	B23	S94	B65	S136
A24	S25	A66	S67	B24	S95	B66	S137
A25	S26	A67	S68	B25	S96	B67	S138
A26	S27	A68	S69	B26	S97	B68	S139
A27	S28	GROUND8	S70	B27	S98	GROUND22	S140
A28	S29	GROUND9	S70	B28	S99	GROUND23	S140
A29	S30	GROUND10	S70	B29	S100	GROUND24	S140
A30	S31	GROUND11	S70	B30	S101	GROUND25	S140
A31	S32	GROUND12	S70	B31	S102	GROUND26	S140
A32	S33	GROUND13	S70	B32	S103	GROUND27	S140
A33	S34	GROUND14	S70	B33	S104	GROUND28	S140
A34	S35			B34	S105		

mat'l. code				surface		tolerance		projection		product family		
SEE NOTES				ASME Y14.5		ASME Y14.5				CARDBUS		
ltr	ecn no	dr	date	tolerances unless otherwise specified								
G				angles				MM		title		
				linear				scale 1:1		ZOLL SPECIAL ASSEMBLY CARDBUS IIIE		
				dr	D. INGRAM	2004-03-23			dwg no		sheet 5 of 5	size
				engr	D. HORCHLER	2004-03-23			10039633		A4	
				chr	D. HORCHLER	2004-03-23			type		CUSTOMER Drawing	
				appd	D. HORCHLER	2004-03-23						
sheet index	revision sheet											