

# Monolithic crystal filter

## MQF10.7-3000/04



### Application

- 8 pol filter
- i.f.- filter
- use in mobile and stationary transceivers

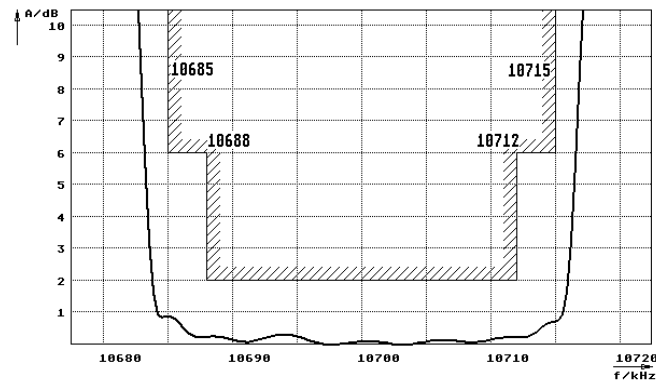
Limiting values		Unit	Value
Center frequency	$f_0$	MHz	10.7
Insertion loss		dB	$\leq 3.0$
Pass band at 6.0 dB		kHz	$\pm 15.00$
Ripple in pass band	$f_0 \pm 12.00$ kHz	dB	$\leq 2.0$
Stop band attenuation	$f_0 \pm 35$ kHz	dB	$\geq 70$
	$f_0 \pm 50$ kHz	dB	$> 90$
Alternate attenuation	$f_0 \pm 50 \dots 300$ kHz	dB	$> 90$ except spurious

Terminating impedance Z			
R1    C1		Ohm/pF	4000    -1.8
R2    C2		Ohm/pF	4000    -1.8

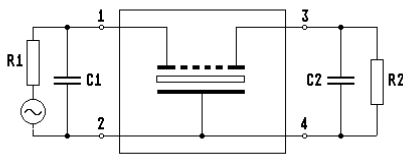
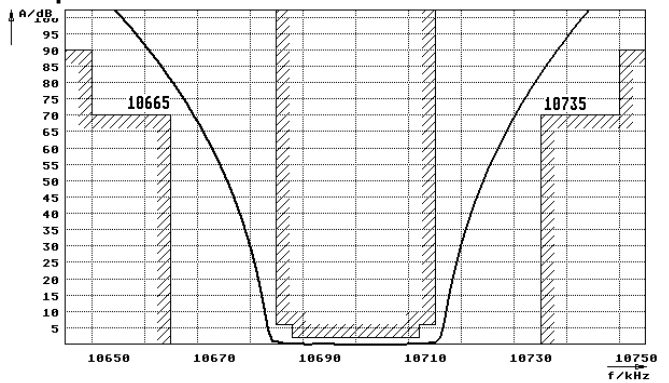
Operating temp. range		°C	-40... +80
-----------------------	--	----	------------

### Characteristics MQF10.7-3000/04

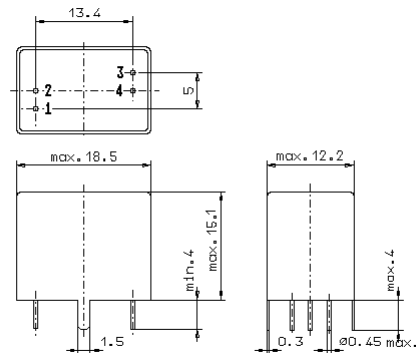
#### Pass band



#### Stop band



- Pin connections:
- 1 Input
  - 2 Ground-Input
  - 3 Output
  - 4 Ground-Output



GV5.1