

SPECIFICATIONS

Mechanical

Mating Force: 4.5Pounds max.
Unmating Force: 4.5Pounds max.
Durability: 1000 Cycles

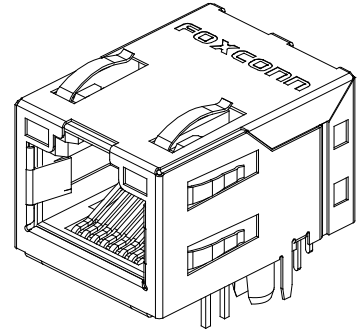
Electrical

Current Rating: 1.5A max.
Dielectric Withstanding Voltage: 1500VAC

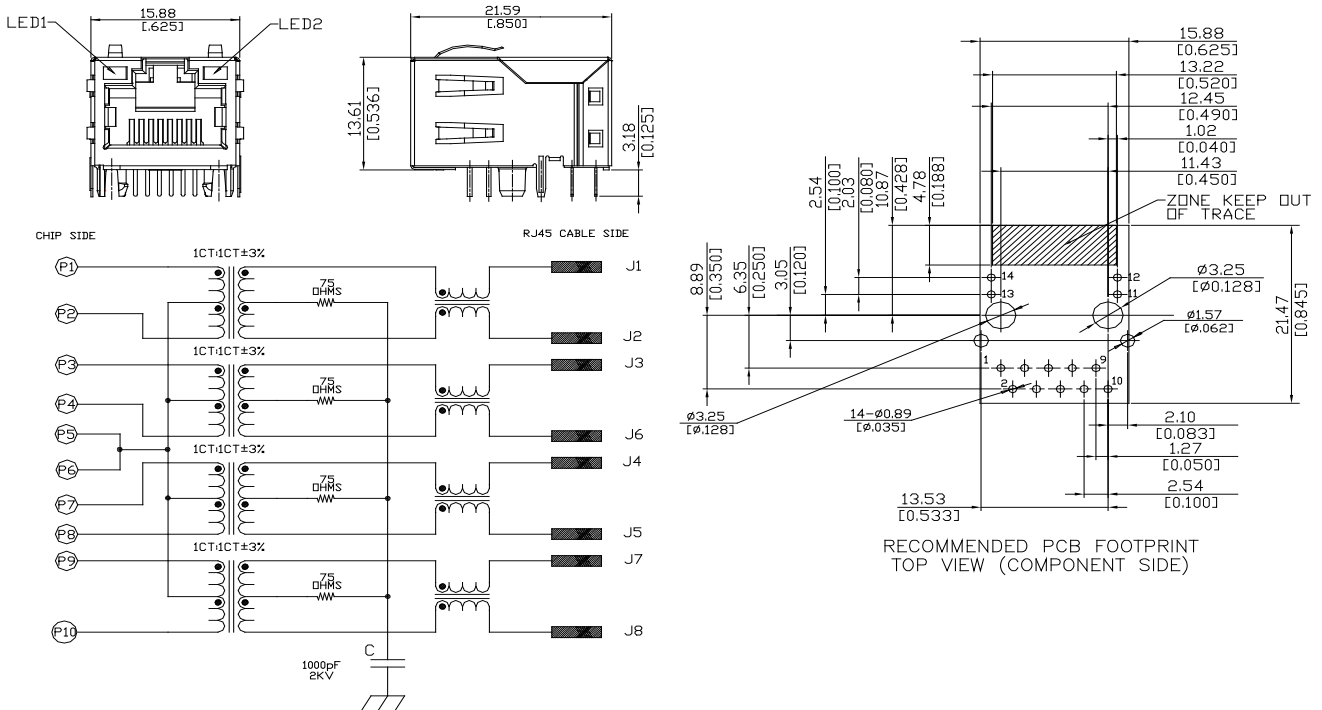
Physical

Housing: Thermoplastic, UL94V-0 rated in Black Color
Contact: Phosphor Bronze
Shell: Brass Alloy
Operating Temperature: -40°C to +85°C

JFM Series
RJ45 1X1
R/A,T/U,T/H Type
1.27mm [.050"] Pitch,
10/100/1000 Base-T



DRAWING



ORDERING INFORMATION

PRODUCT NO. : JFM 3 8 3 1 F - 334A - 4 F

SERIES PREFIX: JFM = RJ WITH MAGNETIC	LEAD FREE CODE: F=LEAD FREE
PROTOCOL TYPE: 3= 10/100/1000 BASE T	PACKAGE TYPE:SOFT TRAY
CORE COUNT: 8 = 8-CORE	FOXCONN SERIAL NO
CONFIGURATION: 3= 1X1 T/U	LEDs: F= LED1 TO BE GREEN LED2 TO BE GREEN-ORANGE
	PCB ATTACHMENT METHOD: 1= SOLDER TAIL