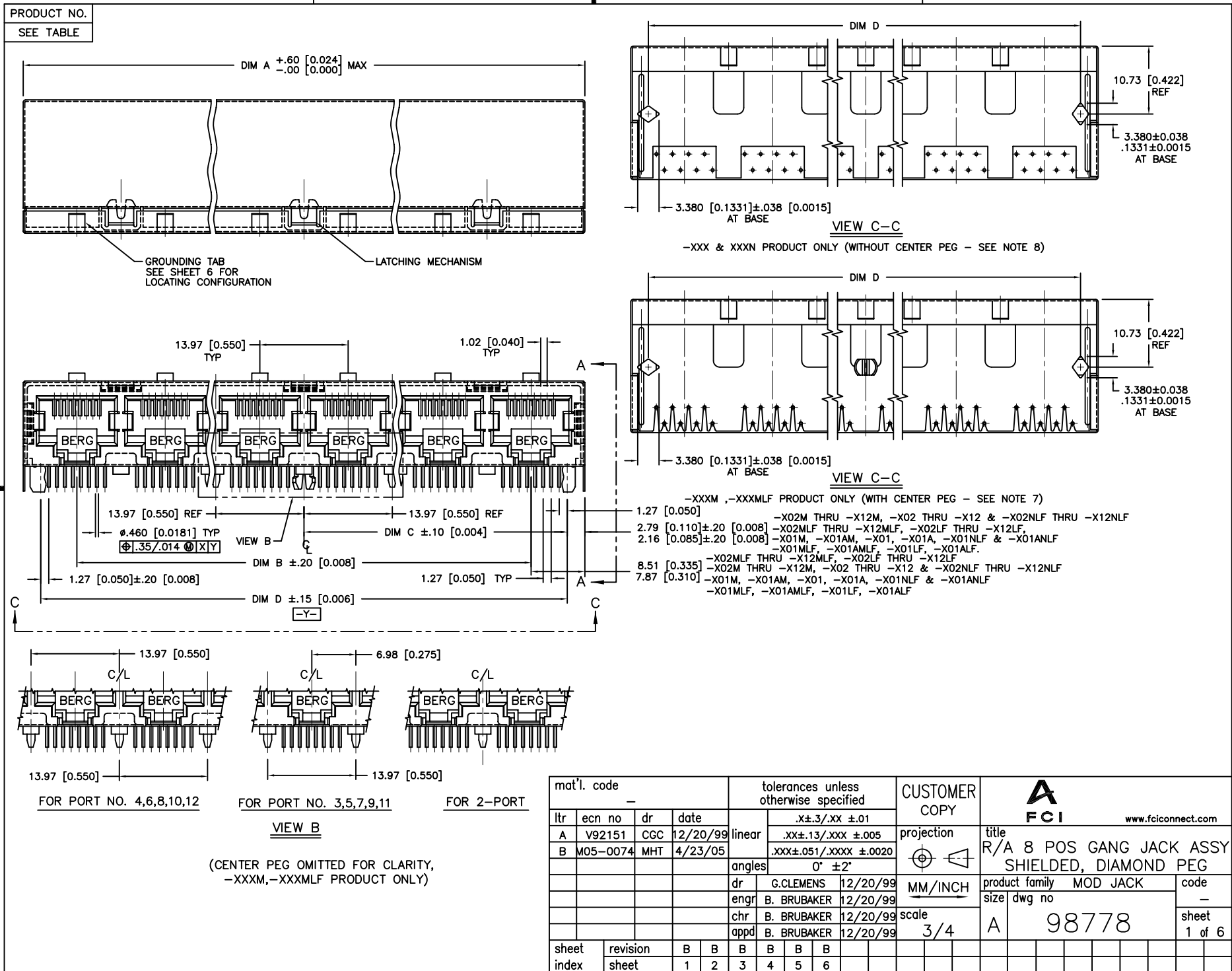


Tous droits strictement reserves. Reproduction ou communication a des tiers interdite sous quelque forme que ce soit sans autorisation écrite du propriétaire. Propriete de c FCI. Droits de reproduction FCI.

All rights strictly reserved. Reproduction or issue to third parties in any form whatever is not permitted without written authority from the proprietor. Property of FCI. Copyright FCI.

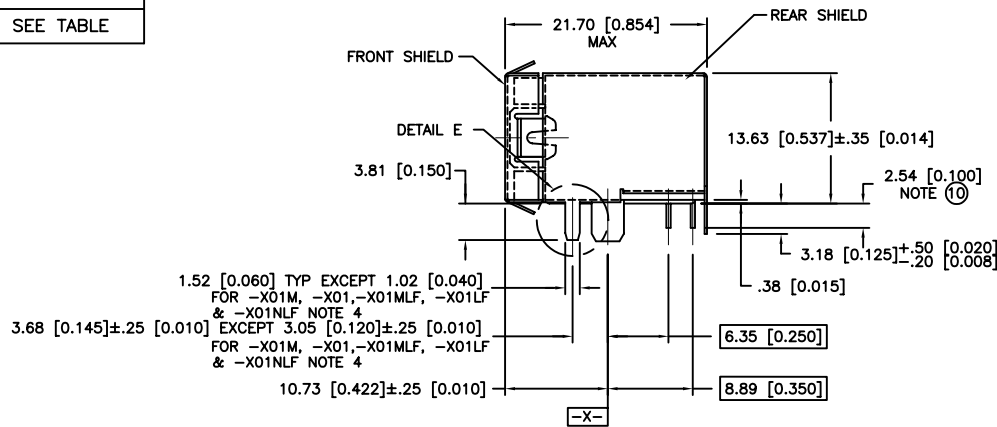
FCI



mat'l. code				tolerances unless otherwise specified				CUSTOMER COPY		A FCI www.fciconnect.com	
ltr	ecn no	dr	date	linear	.xx \pm .13/.xxx \pm .005	projection	title	R/A 8 POS GANG JACK ASSY SHIELDED, DIAMOND PEG		product family MOD JACK code -	
A	V92151	CGC	12/20/99	angles	.xxx \pm .051/.xxxx \pm .0020	MM/INCH	size				
B	M05-0074	MHT	4/23/05	dr	0° \pm 2°	scale	dwg no	A 98778		sheet 1 of 6	
				enr	G.CLEMENS 12/20/99						
				chr	B. BRUBAKER 12/20/99						
				appd	B. BRUBAKER 12/20/99						
sheet index	revision	B	B	B	B	B	B				
	sheet	1	2	3	4	5	6				

PRODUCT No.

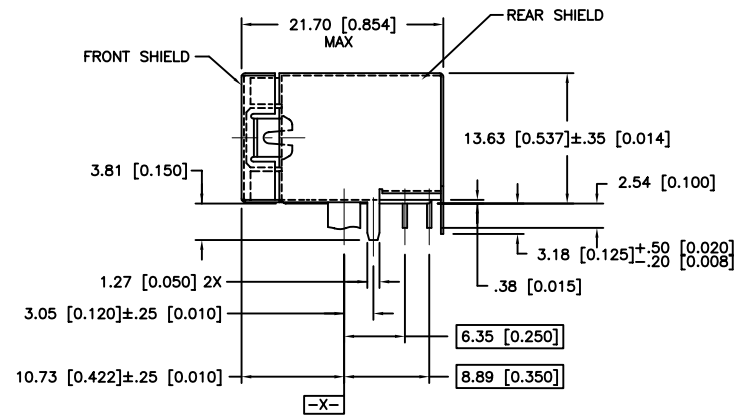
SEE TABLE



VIEW A-A

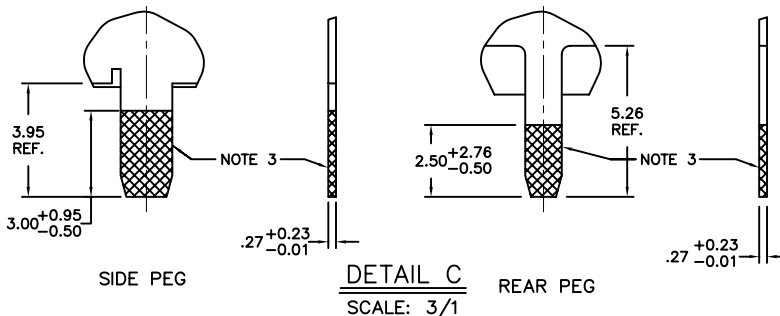
NOTES:

1. RECOMMENDED P.C.B. THICKNESS 1.60 [0.063].
2. CONTACTS: PHOS BRONZE ALLOY UNS-C51000, Ø 0.460 [0.0181] ROUND WIRE, PLATING SEE TABLE.
3. SHIELDING MAT'L: .25 [0.010] THICK BRASS ALLOY
SHIELDING PLATING: FOR 94710-XXX & 94710-XXXM: 2.54µm/100u" MIN BRIGHT TIN-LEAD PLATED OVER 0.76µm/30u" MIN NICKEL UNDERPLATING PER BUS-15-002/M.
FOR 94710-XXXNLF: 0.76µm/30u" MIN NICKEL PLATING, WITH SELECTIVE TIN ON SOLDER TAILS. SEE DETAIL E.
SHIELDING PLATING: FOR 94710-XXXLF & 94710-XXXMLF: 2.54µm/100u" MIN BRIGHT PURE TIN PLATED OVER 0.76µm/30u" MIN NICKEL UNDERPLATING PER BUS-15-002/M.
4. SPECIALLY FOR ONE-PORT P/N 94710-X01M, 94710-X01, & 94710-X01NLF 94710-X01MLF & 94710-X01LF ONLY. SOLDER TAIL OF SHIELD IS 1.02 [0.040] WIDE, DISTANCE FROM PCB PEG TO THE SOLDER TAIL IS 3.05 [0.120].
5. SPECIALLY FOR ONE-PORT P/N 94710-X01AM, 94710-X01A, & 94710-X01ANLF 94710-X01AMLF & 94710-X01ALF ONLY. SOLDER TAIL OF SHIELD IS 1.27 [0.050] WIDE, DISTANCE FROM PCB PEG TO THE SOLDER TAIL IS 3.05 [0.120].



P/N -X01AM, -X01A, -X01AMLF, -X01ALF,
& -X01ANLF ONLY
NOTE 5

6. ALL DIMENSIONS IN MILLIMETERS/INCHES.
7. CENTER PEG FOR -XXXM, -XXXMLF PRODUCT ONLY, 8-PORTS AND ABOVE.
8. NO CENTER PEG AVAILABLE ON -XXX, -XXXLF & -XXXNLF PRODUCT.
9. HOUSING MAT'L: HIGH TEMPERATURE NYLON, GLASS FILLED, 94-V-0 RATED, COLOR BLACK.
10. 2.54[.100] DIM APPLIES ONLY TO SOLDER TAILS.
11. ADD LF SUFFIX AT THE END OF PART NUMBER FOR LEAD FREE OPTION.
12. THE HOUSING WILL WITHSTAND EXPOSURE TO 260°C PEAK TEMPERATURE FOR 15 SECONDS IN A WAVE SOLDER APPLICATION WITH A 1.5mm MINIMUM THICK CIRCUIT BOARD. SEE APPLICATION NOTES/PROCEDURES IF THEY ARE AVAILABLE.
13. THIS PRODUCT MEETS EUROPEAN UNION DIRECTIVES AND OTHER COUNTRY REGULATION AS DESCRIBED IN GS-22-008.
14. PLATING OPTIONS:
MAY BE EITHER GOLD OR GXT PLATED AT MANUFACTURER'S OPTION.



mat'l. code				tolerances unless otherwise specified		CUSTOMER COPY		A FCI www.fciconnect.com	
ltr	ecn no	dr	date	linear	.XX±.13/.XXX ±.005	projection	title	product family	MOD JACK
B					angles	0° ±2°	R/A 8 POS GANG JACK ASSY SHIELDED, DIAMOND PEG	code	-
					dr	G.CLEMENS 12/20/99	MM/INCH	size	dwg no
					enr	B. BRUBAKER 12/20/99	scale	A	98778
					chr	B. BRUBAKER 12/20/99	3/4	sheet	2 of
					appd	B. BRUBAKER 12/20/99			
sheet index	revision sheet								

cage code
22526

STATUS: Released Printed: Feb 19, 2008


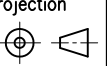
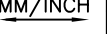
ACAD

PDM: Rev:B

PRODUCT No. SEE NOTE 11	No. OF PORTS	DIM A $\begin{smallmatrix} +.60 \\ -0 \end{smallmatrix}$ [0.024]	DIM B	DIM C ± 1.10 [0.004]	DIM D ± 1.15 [0.006]	GROUND LEG NO. ON THE BACK (VIEW B)	NOTE
98778-X01M	1	15.74 [0.620]	-----	5.72 [0.225]	11.43 [0.450]	NONE	NOTE 4
98778-X01AM	1	15.74 [0.620]	-----	5.72 [0.225]	11.43 [0.450]	NONE	NOTE 5
98778-X02M	2	30.98 [1.220]	13.97 [0.550]	12.70 [0.500]	25.40 [1.000]	1	----
98778-X03M	3	44.95 [1.770]	27.94 [1.100]	19.69 [0.775]	39.37 [1.550]	2	----
98778-X04M	4	58.92 [2.320]	41.91 [1.650]	26.67 [1.050]	53.34 [2.100]	3	----
98778-X05M	5	72.89 [2.870]	55.88 [2.200]	33.66 [1.325]	67.31 [2.650]	2	----
98778-X06M	6	86.86 [3.420]	69.85 [2.750]	40.64 [1.600]	81.28 [3.200]	3	----
98778-X07M	7	100.83 [3.970]	83.82 [3.300]	47.63 [1.875]	95.25 [3.750]	2	----
98778-X08M	8	114.80 [4.520]	97.79 [3.850]	54.61 [2.150]	109.22 [4.300]	3	----
98778-X09M	9	128.77 [5.070]	111.76 [4.400]	61.60 [2.425]	123.19 [4.850]	2	----
98778-X10M	10	142.74 [5.620]	125.73 [4.950]	68.58 [2.700]	137.16 [5.400]	3	----
98778-X11M	11	156.71 [6.170]	139.70 [5.500]	75.57 [2.975]	151.13 [5.950]	2	----
98778-X12M	12	170.68 [6.720]	153.67 [6.050]	82.55 [3.250]	165.10 [6.500]	3	----

PLATING CODE X	PLATING (14)
0	.76uM/30u" G.X.T.
1	.38uM/15u" GOLD
3	.76uM/30u" GOLD
5	1.27uM/50u" GOLD

PRODUCT No. SEE NOTE 11	No. OF PORTS	DIM A $\begin{smallmatrix} +.60 \\ -0 \end{smallmatrix}$ [0.024]	DIM B	DIM C ± 1.10 [0.004]	DIM D ± 1.15 [0.006]	GROUND LEG NO. ON THE BACK (VIEW B)	NOTE
98778-X01	1	15.74 [0.620]	-----	5.72 [0.225]	11.43 [0.450]	NONE	NOTE 4
98778-X01A	1	15.74 [0.620]	-----	5.72 [0.225]	11.43 [0.450]	NONE	NOTE 5
98778-X02	2	30.98 [1.220]	13.97 [0.550]	12.70 [0.500]	25.40 [1.000]	1	----
98778-X03	3	44.95 [1.770]	27.94 [1.100]	19.69 [0.775]	39.37 [1.550]	2	----
98778-X04	4	58.92 [2.320]	41.91 [1.650]	26.67 [1.050]	53.34 [2.100]	3	----
98778-X05	5	72.89 [2.870]	55.88 [2.200]	33.66 [1.325]	67.31 [2.650]	2	----
98778-X06	6	86.86 [3.420]	69.85 [2.750]	40.64 [1.600]	81.28 [3.200]	3	----
98778-X07	7	100.83 [3.970]	83.82 [3.300]	47.63 [1.875]	95.25 [3.750]	2	----
98778-X08	8	114.80 [4.520]	97.79 [3.850]	54.61 [2.150]	109.22 [4.300]	3	----
98778-X09	9	128.77 [5.070]	111.76 [4.400]	61.60 [2.425]	123.19 [4.850]	2	----
98778-X10	10	142.74 [5.620]	125.73 [4.950]	68.58 [2.700]	137.16 [5.400]	3	----
98778-X11	11	156.71 [6.170]	139.70 [5.500]	75.57 [2.975]	151.13 [5.950]	2	----
98778-X12	12	170.68 [6.720]	153.67 [6.050]	82.55 [3.250]	165.10 [6.500]	3	----

mat'l. code				tolerances unless otherwise specified		CUSTOMER COPY	 www.fciconnect.com			
ltr	ecn no	dr	date	linear	.X \pm .3/.XX \pm .01 .XX \pm .13/.XXX \pm .005 .XXX \pm .051/.XXXX \pm .0020 0" \pm 2"		projection	title	product family	code
B								R/A 8 POS GANG JACK ASSY SHIELDED, DIAMOND PEG	MOD JACK	—
				angles				size	dwg no	sheet
				dr	G.CLEMENS	12/20/99		A	98778	3 of
				engr	B. BRUBAKER	12/20/99				
				chr	B. BRUBAKER	12/20/99				
				appd	B. BRUBAKER	12/20/99				
sheet index	revision sheet									

A
FCI

A


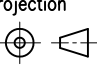
B

PRODUCT No.	No. OF PORTS	DIM A $\begin{smallmatrix} +.60 \\ -0 \end{smallmatrix}$ [0.024]	DIM B	DIM C $\pm .10$ [0.004]	DIM D $\pm .15$ [0.006]	GROUND LEG NO. ON THE BACK (VIEW B)	NOTE
98778-X01NLF	1	15.74 [0.620]	-----	5.72 [0.225]	11.43 [0.450]	NONE	NOTE 4
98778-X01ANLF	1	15.74 [0.620]	-----	5.72 [0.225]	11.43 [0.450]	NONE	NOTE 5
98778-X02NLF	2	30.98 [1.220]	13.97 [0.550]	12.70 [0.500]	25.40 [1.000]	1	----
98778-X03NLF	3	44.95 [1.770]	27.94 [1.100]	19.69 [0.775]	39.37 [1.550]	2	----
98778-X04NLF	4	58.92 [2.320]	41.91 [1.650]	26.67 [1.050]	53.34 [2.100]	3	----
98778-X05NLF	5	72.89 [2.870]	55.88 [2.200]	33.66 [1.325]	67.31 [2.650]	2	----
98778-X06NLF	6	86.86 [3.420]	69.85 [2.750]	40.64 [1.600]	81.28 [3.200]	3	----
98778-X07NLF	7	100.83 [3.970]	83.82 [3.300]	47.63 [1.875]	95.25 [3.750]	2	----
98778-X08NLF	8	114.80 [4.520]	97.79 [3.850]	54.61 [2.150]	109.22 [4.300]	3	----
98778-X09NLF	9	128.77 [5.070]	111.76 [4.400]	61.60 [2.425]	123.19 [4.850]	2	----
98778-X10NLF	10	142.74 [5.620]	125.73 [4.950]	68.58 [2.700]	137.16 [5.400]	3	----
98778-X11NLF	11	156.71 [6.170]	139.70 [5.500]	75.57 [2.975]	151.13 [5.950]	2	----
98778-X12NLF	12	170.68 [6.720]	153.67 [6.050]	82.55 [3.250]	165.10 [6.500]	3	----

*LF SUFFIX AT THE END OF PART NUMBER IS LEAD FREE

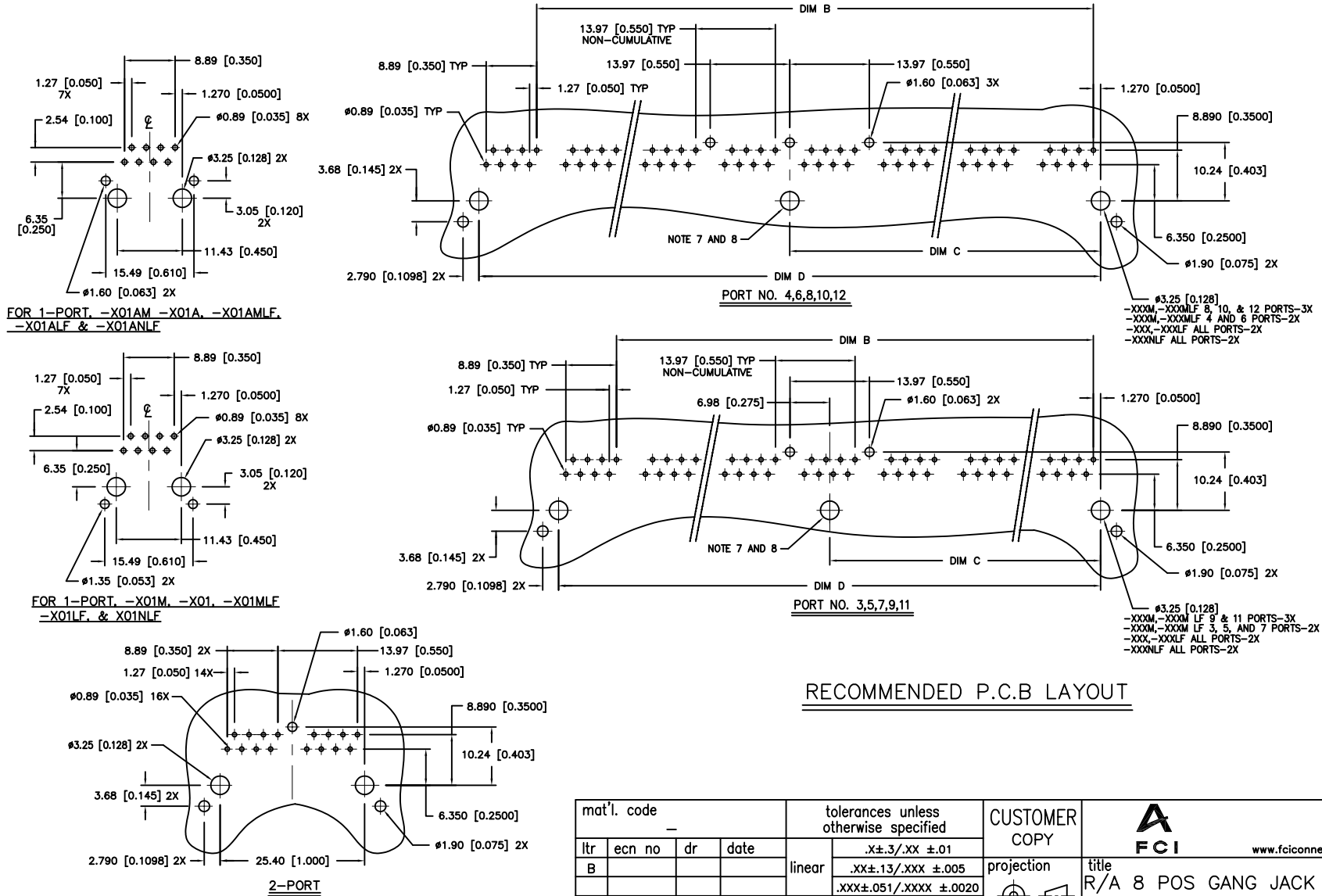
PLATING CODE X	PLATING (14)
0	.76uM/30u" G.X.T.
1	.38uM/15u" GOLD
3	.76uM/30u" GOLD
5	1.27uM/50u" GOLD

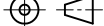

A

mat'l. code —				tolerances unless otherwise specified		CUSTOMER COPY	 www.fciconnect.com			
ltr	ecn no	dr	date	linear	.X \pm .3/.XX \pm .01 .XX \pm .13/.XXX \pm .005 .XXX \pm .051/.XXXX \pm .0020 0" \pm 2"		projection	title R/A 8 POS GANG JACK ASSY SHIELDED, DIAMOND PEG		
B				angles				product family MOD JACK		
				dr	G.CLEMENS 12/20/99		MM/INCH	code —		
				enr	B. BRUBAKER 12/20/99		scale	size dwg no		
				chr	B. BRUBAKER 12/20/99		3/4	A 98778		
				appd	B. BRUBAKER 12/20/99			sheet 4 of		
sheet index	revision sheet									

B

PRODUCT NO.
SEE TABLE



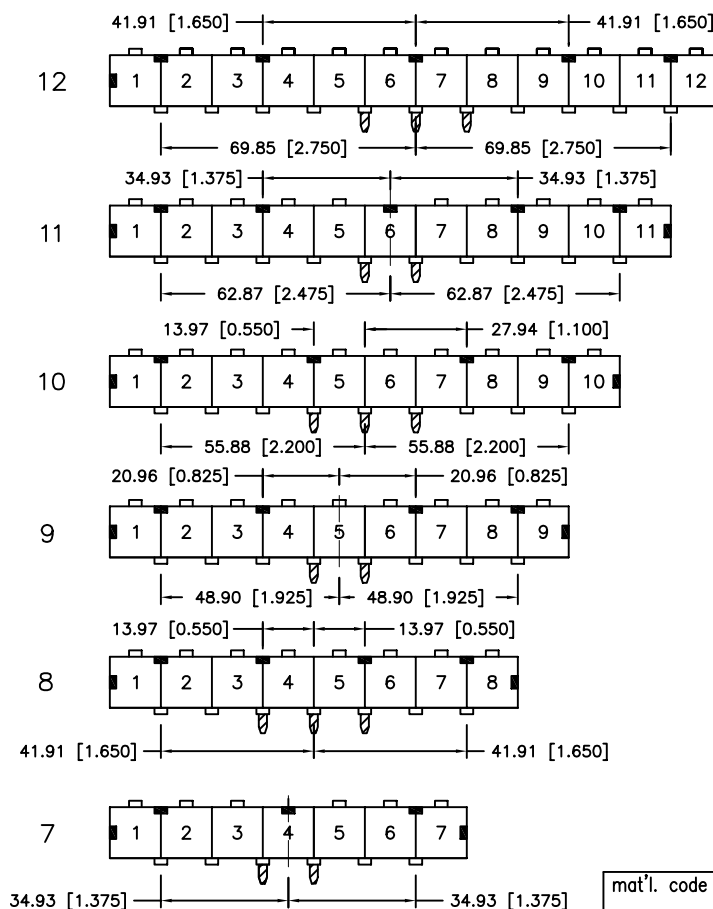
mat'l. code —				tolerances unless otherwise specified			CUSTOMER COPY		<div><div>A</div><div>FCI</div><div>www.fciconnect.com</div></div>										
ltr	ecn no	dr	date	linear	.X±.3/.XX ±.01			projection 	title R/A 8 POS GANG JACK ASSY SHIELDED, DIAMOND PEG										
B					.XX±.13/.XXX ±.005														
					.XXX±.051/.XXXX ±.0020														
				angles	0° ±2°				product family MOD JACK			code							
				dr	G.CLEMENS	12/20/99	scale 3/4					size dwg no A 98778		—					
				engr	B. BRUBAKER	12/20/99								sheet					
				chr	B. BRUBAKER	12/20/99								5 of					
				appd	B. BRUBAKER	12/20/99													
sheet index		revision sheet																	

cage code
22526

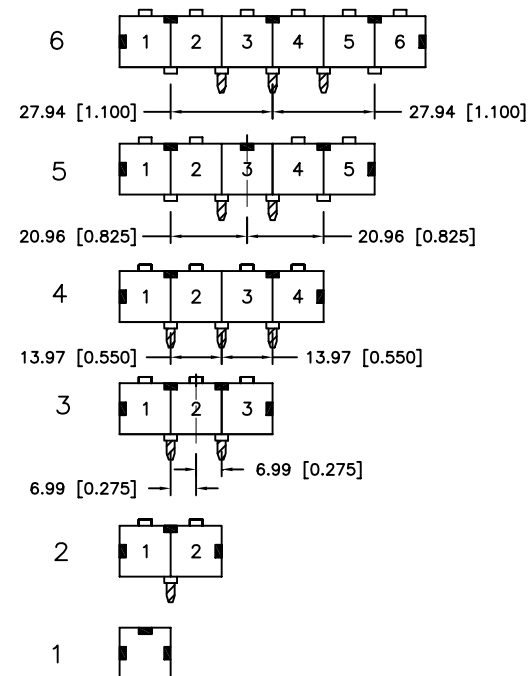
LATCHING AND GROUNDING TAB LOCATING CONFIGURATION


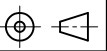
- INDICATES LATCHING TAB (SEE SHEET 1)
 □ INDICATES GROUNDING TAB ON THE FRONT OF PRODUCT (SEE SHEET 1)
 ▨ INDICATES GROUNDING LEG ON THE BACK OF PRODUCT (VIEW B)

PORT NUMBERS



PORT NUMBERS



mat'l. code				tolerances unless otherwise specified		CUSTOMER COPY	 www.fciconnect.com
ltr	ecn no	dr	date	linear	.XX±.13/.XXX ±.005		
B				angles	0° ±2°	projection	title
				dr	G.CLEMENS 12/20/99	 MM/INCH	R/A 8 POS GANG JACK ASSY SHIELDED, DIAMOND PEG
				enr	B. BRUBAKER 12/20/99		product family MOD JACK
				chr	B. BRUBAKER 12/20/99	scale	code
				appd	B. BRUBAKER 12/20/99	3/4	size dwg no
sheet index	revision sheet						A 98778
							code
							sheet 6 of

 cage code
22526

STATUS: Released Printed: Feb 19, 2008