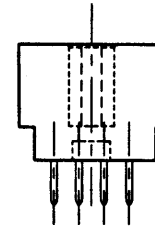
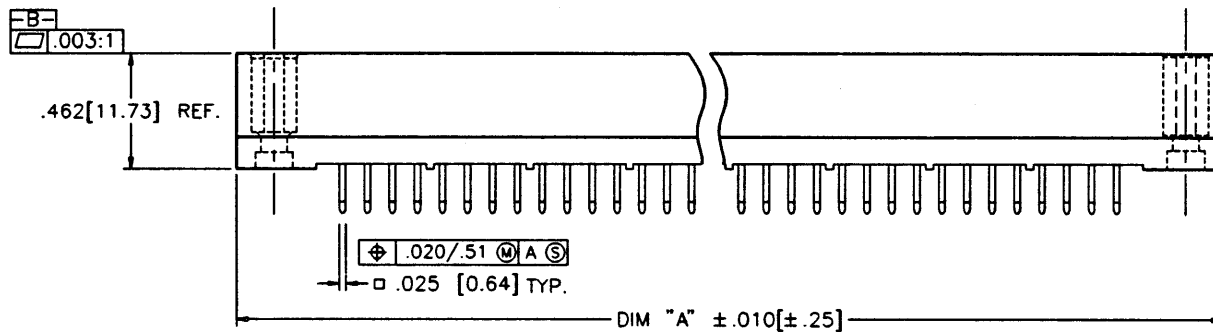
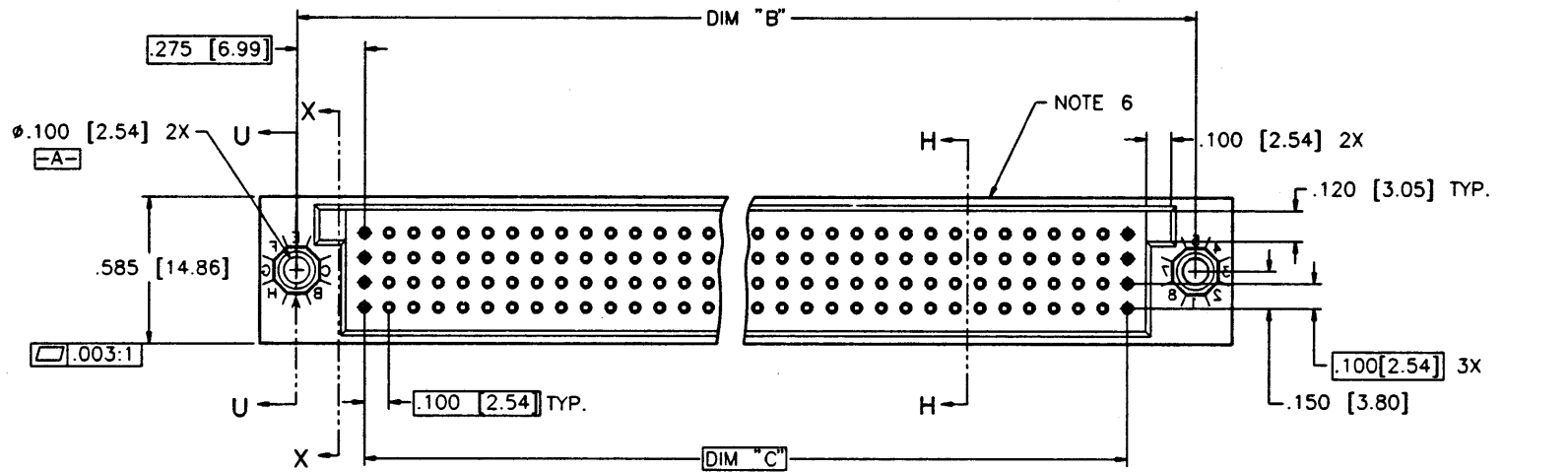


PRODUCT NUMBER

50759-XXXX

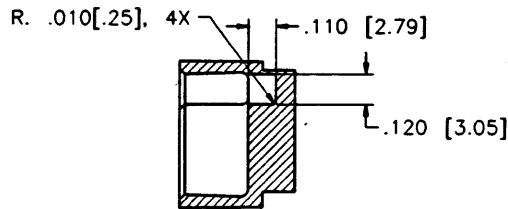


REVISIONS				SHEET INDEX	ISSUE		DATE	BY	CHK	APP	CUST
REV	ECN/DDR#	BY	DATE		SH NO.	1 2					
A	V40898	GIP	5/18/94								
B	V41586	SAR	11/28/94								

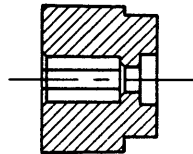
BERG
ELECTRONICS

TITLE: 4 ROW, VERT. HDR. ASSY. w/POCKETS, SOLDER TAIL
SCALE: 3:1 C
UNIT: INCHES
SHEET: 1 of 2

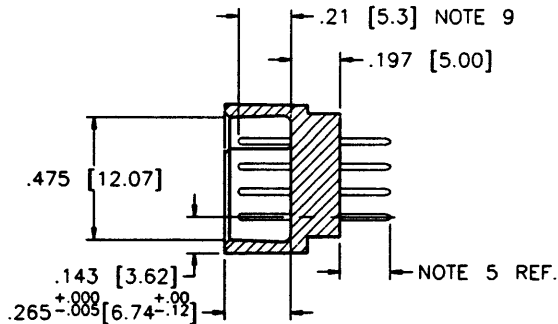
PRODUCT NUMBER	DIM.	LENGTH FORMULAS
50759-XXXX	DIM "A"	.100/2.54 x NO. OF COLUMNS + .75/19.1
	DIM "B"	.100/2.54 x NO. OF COLUMNS + .45/11.4
	DIM "C"	.100/2.54 x NO. OF COLUMNS - .10/2.5



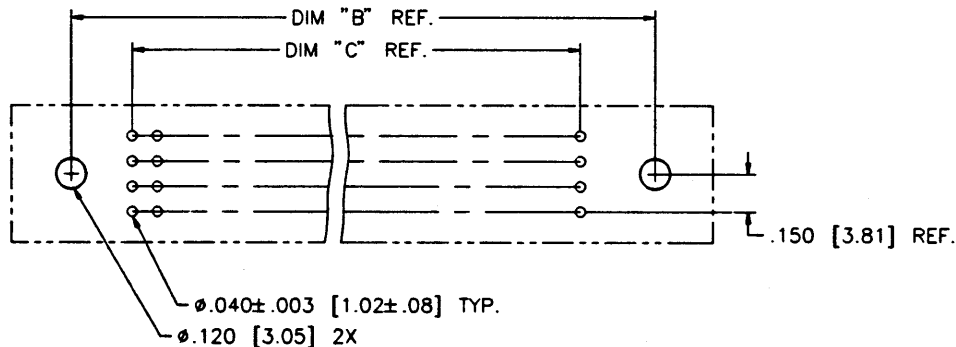
SECTION X-X



SECTION U-U



SECTION H-H



RECOMMENDED PCB LAYOUT
ALL HOLES LOCATED ON .100[2.54] GRID
UNLESS OTHERWISE SPECIFIED

NOTES:

- PRODUCT NUMBERING CODE:
50759 - X XXX X
TAIL LENGTH(NOTE 5)
NO. OF POSITIONS(NOTE 2)
PLATING(NOTE 4)
BASE NUMBER
- THIS PRODUCT IS CONFIGURED IN SIZE OF 6 THRU 80 COLUMNS IN INCREMENTS OF ONE.
i.e.: 6,7,8,9.....79, 80
- MATERIALS:
HOUSING - GLASS FILLED PPS
PINS - PHOS BRONZE
- PLATING OPTIONS:
A = 50u" Ni UNDER ALL WITH 30u" Au ON CONTACT AREA, SnPb ON PCB INTERFACE AND Au FLASH ON ALL OTHER AREAS.
B = 50u" Ni UNDER ALL WITH 30u" GXT ON CONTACT AREA, SnPb ON PCB INTERFACE AND Au FLASH ON ALL OTHER AREAS.
- TAIL LENGTH OPTIONS:
FOR PLATING OPTIONS "A" & "B" ONLY:
A = .177/4.5
J = .120/3.04
- "BERG" NAME, BERG P/N, & LOT CODE TO APPEAR ON THIS SURFACE PER BUS-12-108.
- FOR DOCUMENTATION MENU, SEE BUS-01-057.
- MANUFACTURE PER BERG, BUS-24-004.
- REFERENCE 50810 FOR FIRST MATE LAST BREAK MATING LENGTHS AVAILABLE AND FOR SELECTIVELY LOADED HEADER WORKSHEET. MATING LENGTHS WILL BE .010" SHORTER THAN SPECIFIED ON WORKSHEET DUE TO THE .197 DIMENSION SHOWN IN SECTION H-H.

REVISIONS				SHEET INDEX	ISSUE B						
REV	ECN/DDR#	BY	DATE		SH NO.	2					
B											
				TOLERANCES UNLESS OTHERWISE SPECIFIED	NOTE 1	OR G. PETERS	5/20/94	CUSTOMER COPY			
				0.08 .01 / 0.8 .3	FINISH	J. AFTON	5/18/94	TITLE 4 ROW, VERT. HDR. ASSY. w/POCKETS, SOLDER TAIL			
				LINEAR .0008 .005 / 0.08 .13	PRODUCT FAMILY HPC	J. AFTON	5/20/94	DRAWN BY: J. AFTON			
				0.0008 .0020 / 0.008 .051	APPROVE S. CLARK	5/20/94	SCALE 3:1				
				ANGLES 0.2			SHEET 2 OF 2				

BERG
ELECTRONICS