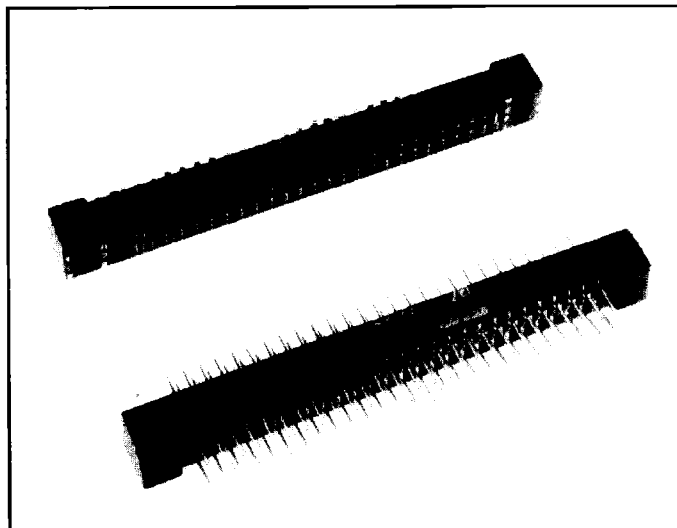


# CONNECTEURS 3 RANGÉES - 80 CONTACTS

## 3 ROW CONNECTORS - 80 CONTACTS



● Interchangeable et interaccouplable avec le 53 contacts HE 8 - 2 rangées

● *Interchangeable and intermatable with the HE 8 connector 2 rows - 53 contacts*

### RÉFÉRENCES COMMERCIALES

● Connecteur femelle sans fixation, à braser sur circuit imprimé.

● *Female connector without fitting, for hard soldering on printed circuit board.*

### HOW TO ORDER

**127 T 80 XL F 1 YC N**

● Connecteur mâle sans fixations

● *Male connector without fitting*

type de contact : **Y - W3 - ZC** ← **127 T 80 XM 1** | **R** → contact type : **Y - W3 - ZC**

● Fixations : références unitaires

● *Fittings part numbers for each fitting.*

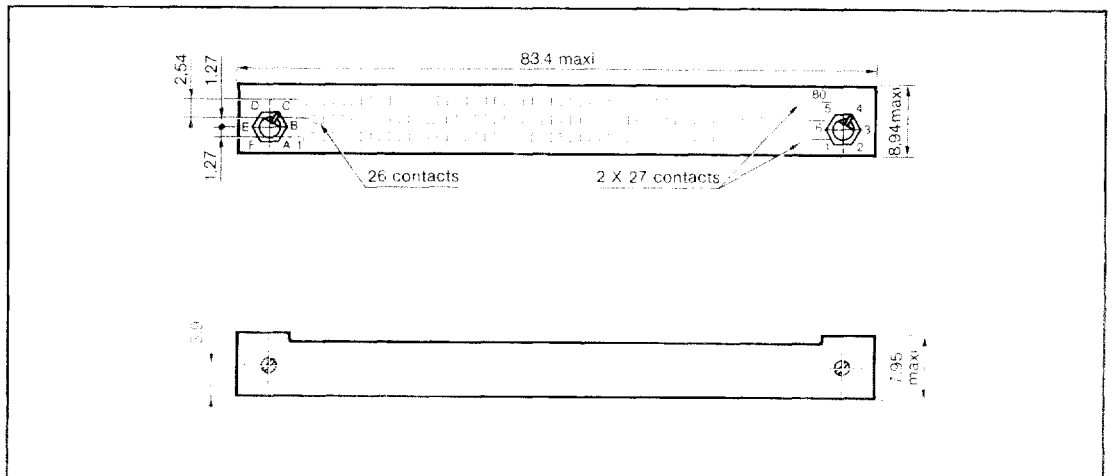
\* uniquement pour connecteurs équipés de contacts W3

Fixation d'extrémité 2 par connecteur <i>End fitting</i> 2 for each connector	Modèle HE 801 équivalent <i>Type HE 801</i>
<b>HE 8 C 301</b> <b>HE 8 C 412</b> <b>HE 8 C 403*</b>	<b>AF</b> <b>AM</b> <b>BM*</b>

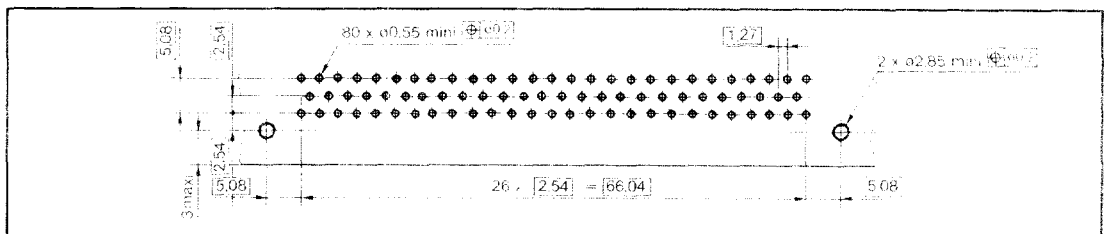
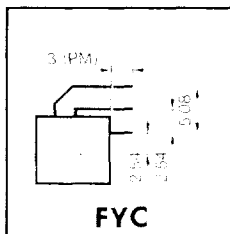
\* only for connectors with W3 contacts

**ENCOMBREMENTS**  
DIMENSIONS

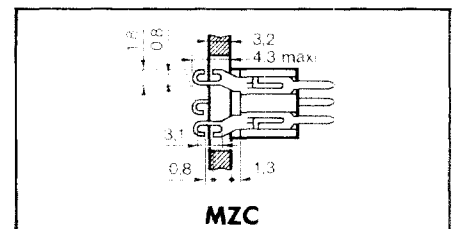
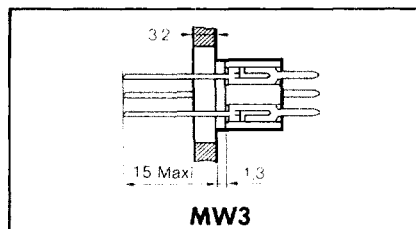
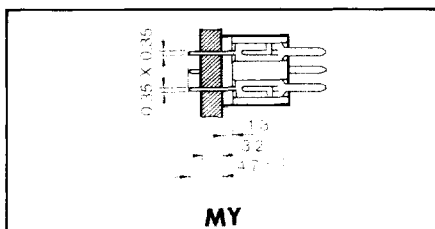
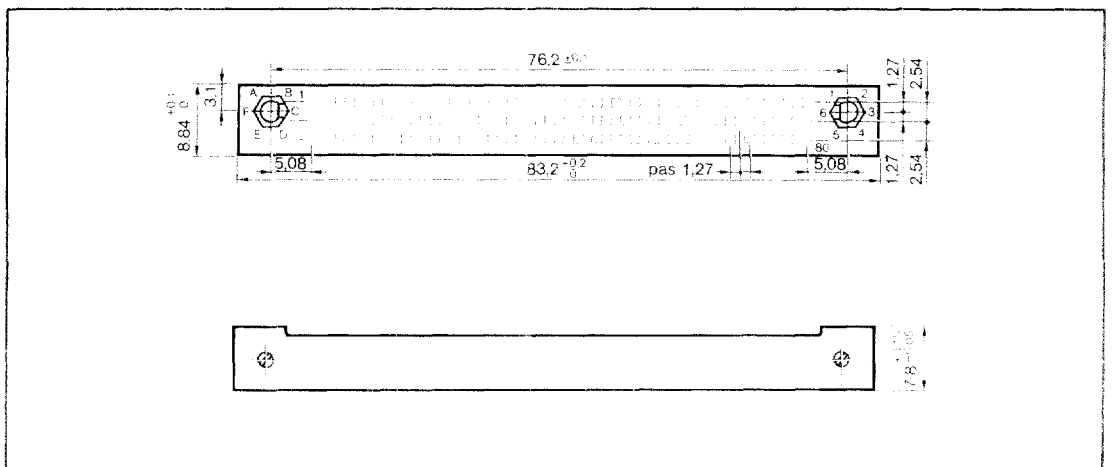
**CONNECTEUR FEMELLE**  
FEMALE CONNECTOR



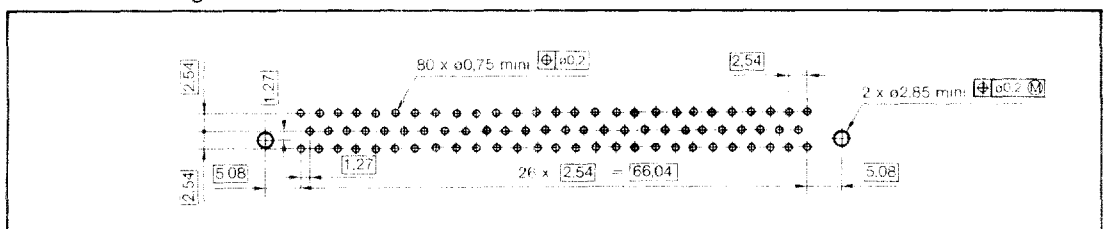
Perçage de la carte imprimée Contact FYC  
PC Board drilling FYC contact



**CONNECTEUR MÂLE**  
MALE CONNECTOR



Perçage de la carte imprimée - contacts MY  
PC Board drilling - MY contacts



côtes en mm