

RED INDICATES ORIGINAL

DATA CONTAINED IN THIS DOCUMENT IS PROPRIETARY TO TROMPETER ELECTRONICS INC. AND SHALL NOT BE DISCLOSED, COPIED OR USED FOR PROCUREMENT OR MANUFACTURE WITHOUT EXPRESS WRITTEN PERMISSION.

REVISIONS

REV	EO	DESCRIPTION	DWN	APPROVED	DATE
E	12089	TAI-184 WAS TAI-189; SEE ECO	DBN	<i>Bmi NAM</i>	7/22/97

305-0555

SH

DASH NO	CONNECTOR TYPE	MATERIAL	ASSEMBLE PER	FIG	MTG HOLE FIG
-1	PL75	310-0002-32	TAI-184	1A	—
-2	CJ70	3-0043-32		2A	—
-3	BJ79	3-0018-32		3A	10
-4	BJ74	3-0055-32		4A	11
-5	PL375	315-0011-32		1B	—
-6	CJ370	3-0066-32		2B	—
-7	BJ379	3-0074-32		3B	10
-8	BJ374	3-0073-32		4B	11
-9	PL74	310-0025-32		5A	—
-10	CJ70TL	3-0217-32		6A	—
-11	BJ79TL	3-0112-32		7A	10
-12	BJ74TL	3-0105-32		8A	11
-13	PL75FL	310-0006-32		5B	—
-14	CJ70FL	3-0101-32		6B	—
-15	BJ79FL	3-0052-32		7B	10
-16	BJ74FL	3-0099-32		8B	11
-17	PL73	310-0038-32		9	—

FIG 1

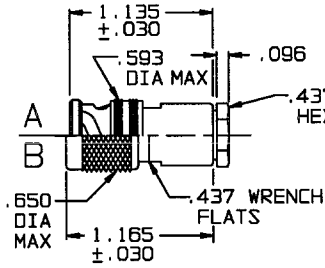


FIG 2

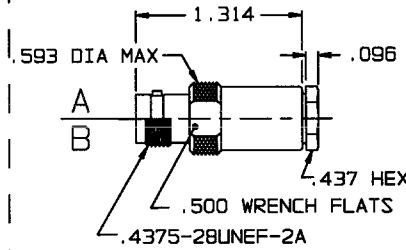


FIG 3

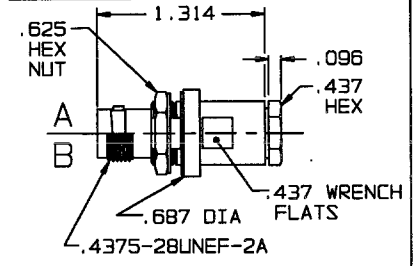


FIG 4

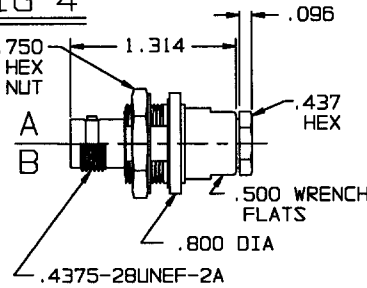


FIG 5

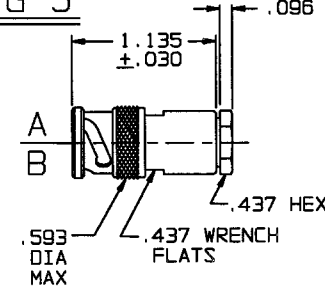


FIG 6

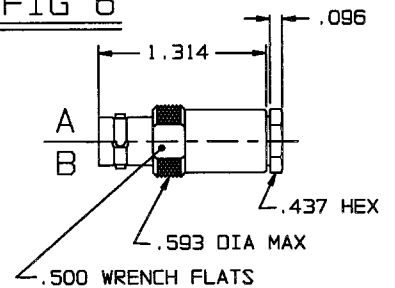


FIG 10

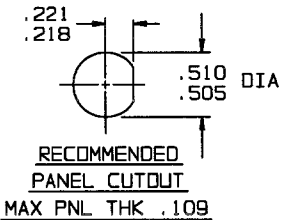


FIG 11

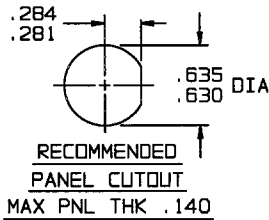


FIG 7

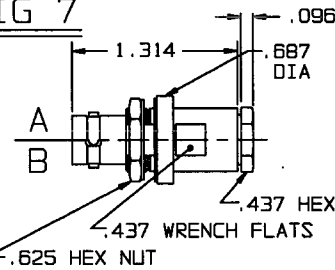


FIG 8

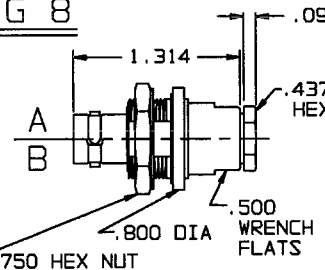
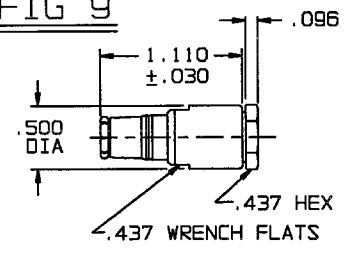


FIG 9



4. EXCEPT REPLACE 8-1580-32 CLAMP NUT WITH 8-1580-21 CLAMP NUT; IF "BR" VERSION REQD, REPLACE 8-1580-32 WITH 8-1939-21 CLAMP NUT
3. CONCENTRIC TWINAX / TRIAX, 2-LUG, 3-LUG, 4-LUG & THREADED CABLE PLUGS / RECEPTACLES, INSULATED & NONINSULATED BULKHEAD MOUNT RECEPTACLES & PUSH-ON CABLE FOR RAYCHEM CABLE # ST5M1284-001
2. FINISH TFS-1A (NICKEL)
1. ALL DIM ARE IN INCHES

5. EXAMPLE OF COMPLETE PART NUMBER:
 305-0555-1 BR
 BASIC PART NO. ———— IF BEND RELIEF SPRING REQUIRED ADD SUFFIX "BR" TO PART NO
 DASH NO. ————

QTY	DESCRIPTION	PART NUMBER	ITEM		
TOL UNLESS SPECIFIED	TROMPETER ELECTRONICS, INC.	"70" SERIES #10613	REV		
.XX ±				MATERIAL	CODE IDENT
.XXX ±				14949	DRAWING NO. 305-0555
.XXX ±			E		
.XXX ±					
ENGR	APPR	DATE 12-4-84	SHEET		
NEXT ASSY	SCALE —				