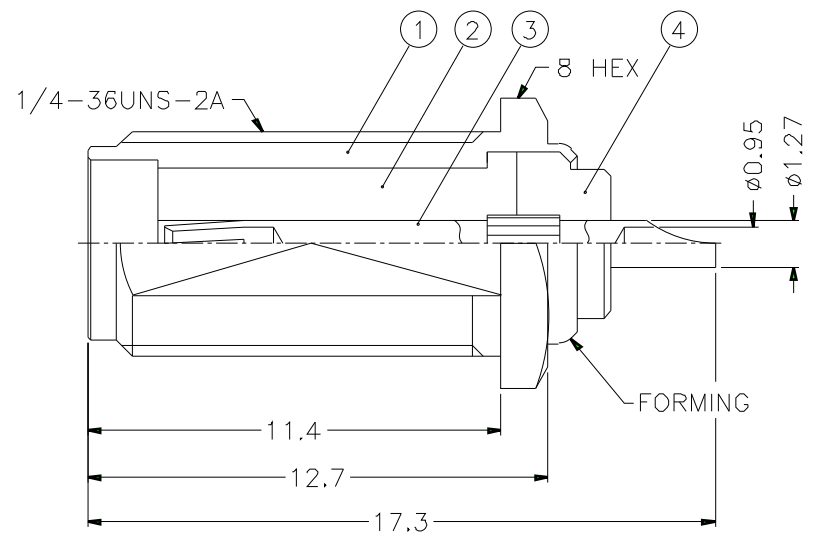
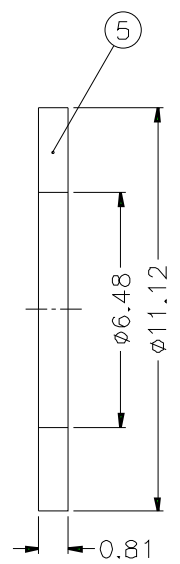
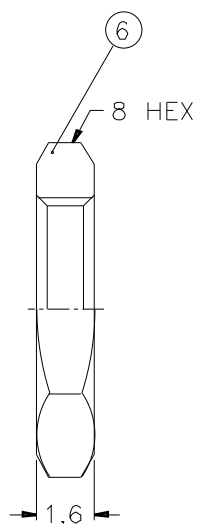
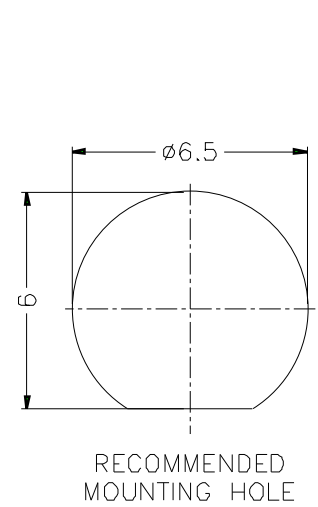


REVISIONS		
ISS	ZONE	DESCRIPTION\PER REQUEST\DATE



NOTES: FINISH (PLATING THICKNESS IN MICRO-INCHES)
 1. BRASS PER QQ-B-626
 2. BRASS PER QQ-B-613
 3. GOLD PL. 3 MIN. THICK OVER NICKEL PL. 100 MIN. THICK OVER COPPER STRIKE
 4. BERYLLIUM COPPER PER QQ-C-530
 5. GOLD PL. 50 MIN. THICK OVER NICKEL PL. 100 MIN. THICK OVER COPPER STRIKE
 6. TEFLON MIL-P-19468

1. CONTACT PIN TO SOLDER
 2. MAX. PANEL THICKNESS=2.9mm

NO	DESCRIPTION	MATERIAL	FINISH	Q'TY	DRAWING NO.
6	HEX NUT	NOTE 1	NOTE 3	1	HNB-1/4-36X16
5	WASHER	NOTE 2	NOTE 3	1	WS-1112/648X081
4	INSULATOR	NOTE 6	NATURAL	1	SMA7301-4T-50
3	CONTACT PIN	NOTE 4	NOTE 5	1	SMA7301-3
2	INSULATOR	NOTE 6	NATURAL	1	SMA7301-2T-50
1	BODY	NOTE 1	NOTE 3	1	SMA7301-1-B

DIMENSIONS ARE IN MILLIMETERS			
UNLESS OTHERWISE SPECIFIED TOLERANCES			
0.5-6	=	±0.2	
6-30	=	±0.4	
30-120	=	±0.6	
120-315	=	±1	
315-1000	=	±1.6	
1000-2000	=	±2.4	

PART NO. SMA6451B1-002-3GT50G-50	
APPROVED	DATE 10-11-01'
CHECKED	DATE 10-11-01'
DRAWN	DATE 10-11-01'
SCALE	5/1 ISSUE A
FILE NO.	

Amphenol

TITLE
SMA BULKHEAD RECEPT. JACK

DRAWING NO.
KJ-SMA6451B1-002-3GT50G-50

ITEM NO.