

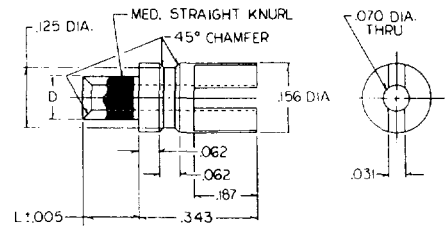


MIL-T-55155 Terminals

ORDER BY PART NO.	"D" ±.002	L NOM.	RECOMMENDATIONS		
			BD THICK	MTG HOLE	SWAGE TOOL
4516 A	.112	.109	.062	+.003 .116 -.001	4516
4516 B	DIA.	.140	.094	DIA.	
4516 C		.171	.125	DIA.	

MIL-T-55155/32-1, 3 & 6

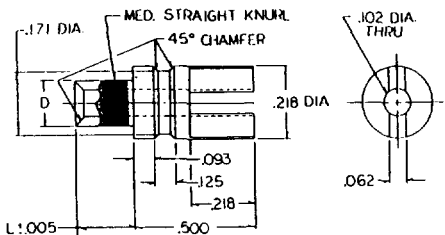
PART NO. 4516



ORDER BY PART NO.	"D" ±.002	L NOM.	RECOMMENDATIONS		
			BD THICK	MTG HOLE	SWAGE TOOL
4517 A	.135	.109	.062	+.003 .139 -.001	4517
4517 B	DIA.	.140	.094	DIA.	
4517 C		.171	.125	DIA.	

MIL-T-55155/32-2, 4 & 7

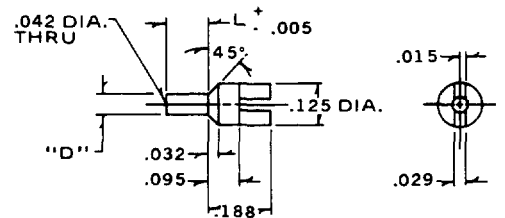
PART NO. 4517



ORDER BY PART NO.	"D" ±.002	L NOM.	RECOMMENDATIONS		
			BD THICK	MTG HOLE	SWAGE TOOL
4571 A	.060	.062	.031	+.003 .064 -.001	4571
4571 B	DIA.	.094	.062	DIA.	
4571 C		.125	.094	DIA.	
4571 D		.156	.125	DIA.	

MIL-T-55155/24-1, 2, 3 & 4

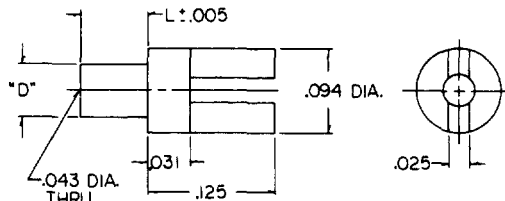
PART NO. 4571



ORDER BY PART NO.	"D" ±.002	L NOM.	RECOMMENDATIONS		
			BD THICK	MTG HOLE	SWAGE TOOL
4577 AA	.063	.037	.016	+.003	4577
4577 A	DIA.	.053	.031	.065	
4577 B		.084	.062	DIA.	
4577 C		.115	.094	DIA.	

MIL-T-55155/24-5, 6, 7, 8 & 9

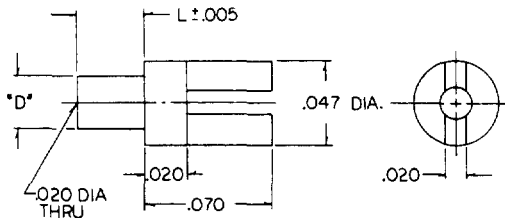
PART NO. 4577



ORDER BY PART NO.	"D" ±.002	L NOM.	RECOMMENDATIONS		
			BD THICK	MTG HOLE	SWAGE TOOL
4578 A	.032	.053	.031	+.003 .034 -.001	4578
4578 B	DIA.	.084	.062	DIA.	
4578 C		.115	.094	DIA.	

MIL-T-55155/24-15, 16, & 17

PART NO. 4578



Standard Plating Suffix to Part Number

Terminal

See Page 93 for all plating options.

-4 (Sb over Cu)

TOLERANCE: .xxx ±.005 (ALL DIMS. BEFORE PLATING)