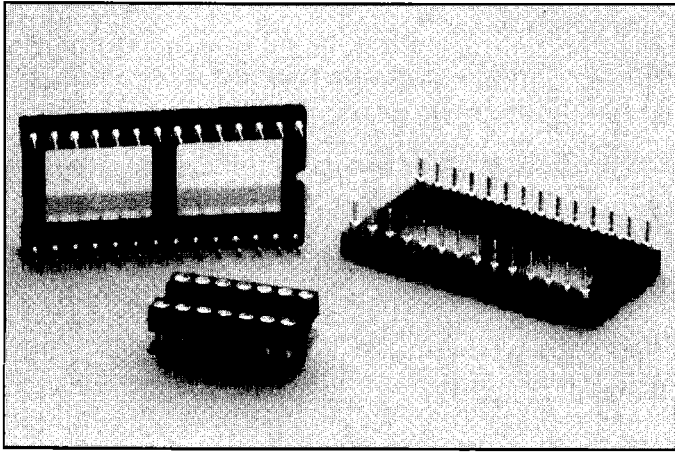
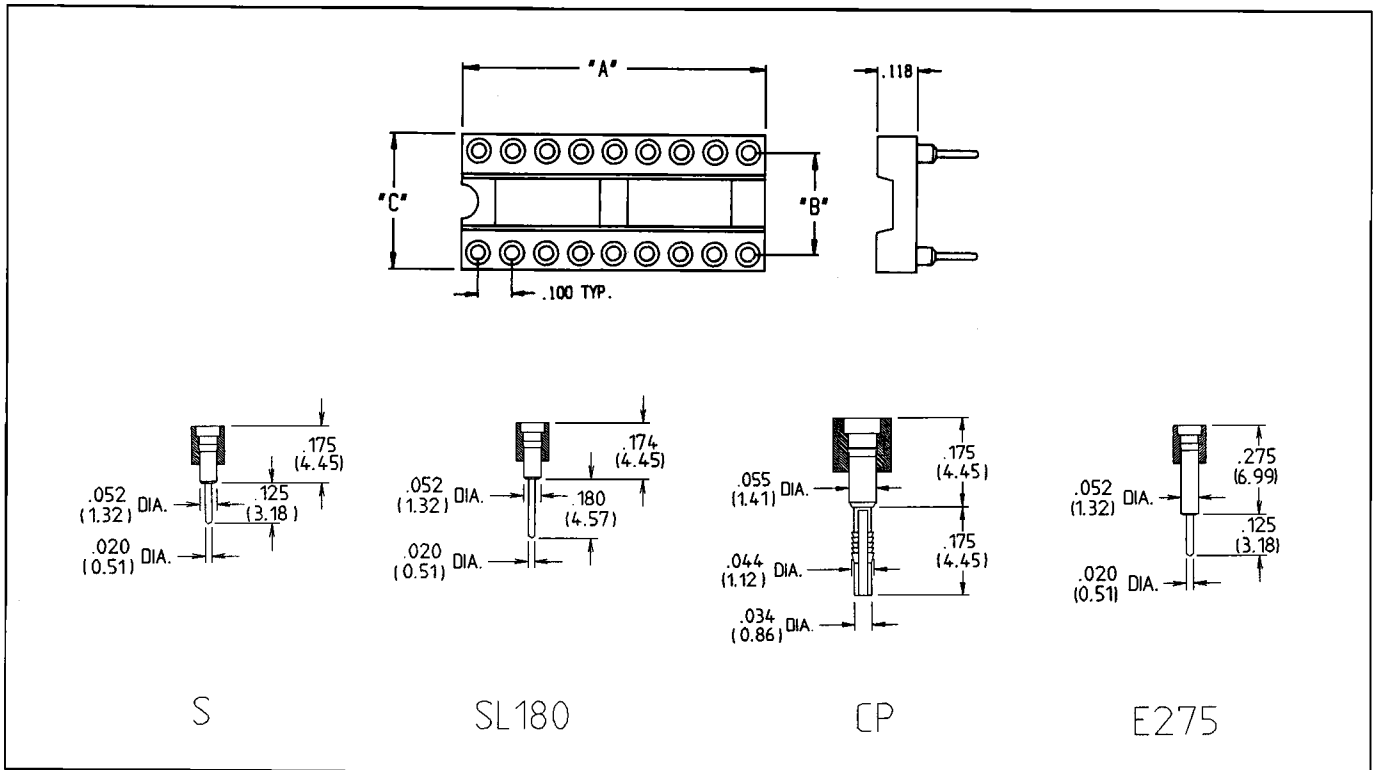


Open Body Screw Machine Sockets

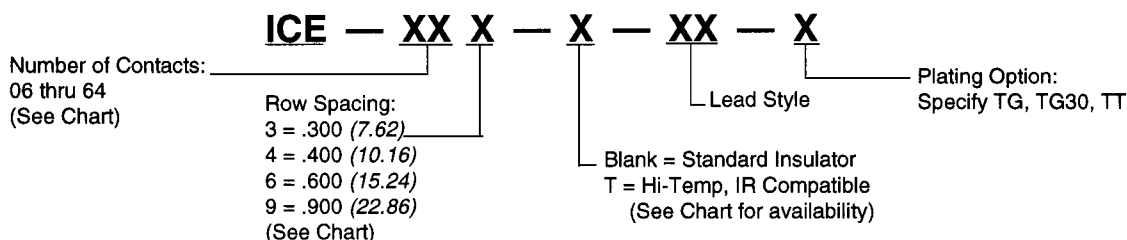
ICE Series



- Variety of pin lengths to meet specific board stacking applications
- Open body provides convection cooling
- 4-finger Beryllium Copper contact accepts short IC leads
- 48 and 64 pin sizes available for VLSI, LAN and microprocessor chips
- Side and end stackable



How To Order ICE Series



Part Numbers

| Number of Contacts | Description | Dimension A | Dimension B | Dimension C |
|--------------------|-------------|---------------|--------------|--------------|
| 6 | ICE-063-X-X | .295 (7.49) | .300 (7.62) | .395 (10.03) |
| 8 | ICE-083-X-X | .395 (10.03) | .300 (7.62) | .395 (10.03) |
| 10 * | ICE-103-X-X | .495 (12.57) | .300 (7.62) | .395 (10.03) |
| 14 ‡ | ICE-143-X-X | .695 (17.65) | .300 (7.62) | .395 (10.03) |
| 16 ‡ | ICE-163-X-X | .795 (20.19) | .300 (7.62) | .395 (10.03) |
| 18 | ICE-183-X-X | .895 (22.73) | .300 (7.62) | .395 (10.03) |
| 20 ‡ | ICE-203-X-X | .995 (25.27) | .300 (7.62) | .395 (10.03) |
| 22 | ICE-223-X-X | 1.095 (27.81) | .300 (7.62) | .395 (10.03) |
| 22 * | ICE-224-X-X | 1.095 (27.81) | .400 (10.16) | .495 (12.57) |
| 24 | ICE-243-X-X | 1.195 (30.35) | .300 (7.62) | .395 (10.03) |
| 24 * | ICE-244-X-X | 1.195 (30.35) | .400 (10.16) | .495 (12.57) |
| 24 | ICE-246-X-X | 1.195 (30.35) | .600 (15.24) | .695 (17.65) |
| 28 | ICE-283-X-X | 1.395 (35.43) | .300 (7.62) | .395 (10.03) |
| 28 ‡ | ICE-286-X-X | 1.395 (35.43) | .600 (15.24) | .695 (17.65) |
| 32 | ICE-326-X-X | 1.595 (40.51) | .600 (15.24) | .695 (17.65) |
| 36 * | ICE-366-X-X | 1.795 (45.60) | .600 (15.24) | .695 (17.65) |
| 40 ‡ | ICE-406-X-X | 1.995 (50.67) | .600 (15.24) | .695 (17.65) |
| 42 | ICE-426-X-X | 2.095 (53.21) | .600 (15.24) | .695 (17.65) |
| 48 ‡ | ICE-486-X-X | 2.395 (60.83) | .600 (15.24) | .695 (17.65) |
| 50 * | ICE-509-X-X | 2.495 (63.37) | .900 (22.86) | .995 (25.27) |
| 52 * | ICE-529-X-X | 2.595 (65.91) | .900 (22.86) | .995 (25.27) |
| 64 ** | ICE-649-X-X | 3.195 (81.15) | .900 (22.86) | .995 (25.27) |

*Available with S & SL lead styles only • ‡ Available with Hi-temp insulator body

**Available with S lead style only

Materials:

Body: Black polyester, glass-filled
Contacts: Beryllium Copper
Shell: Half hard Brass

Acceptable Pin Sizes:

Diameter: .016" - .021" (.41 - .53)
Length:
S, SL180, CP: .110" - .150"
& E275 (2.79 - 3.81)

Mounting Information:

.018" Dia/.020" Dia. Pin = .030" ± .002" (.76 ± .05)
 PCB Hole

Pressfit = .037" - .042" (.93 - 1.07) DIA Finished PTH

Performance Characteristics:

Insertion Force: 12 ounces* max per contact
Withdrawal Force: 1.5 ounces* min per contact
 (After 12 insertions)
 *using .017 diameter pin

Capacitance: 1 picofarad maximum
Insulation Resistance: 5000 megohms minimum
Dielectric Withstanding Voltage: 500 volts AC
Current Rating: 1 Ampere
Flammability: UL94V-0
Temperature Range: -65°C to + 125°C

Plating Description:

Suffix: TG = 10 μinch (.254 μm) minimum
 Gold on contact area.
 200 μinch (5.08 μm) minimum
 Tin/Lead on terminal area.

TG30 = 30 μinch (.762 μm) minimum
 Gold on contact area.
 200 μinch (5.08 μm) minimum
 Tin/Lead in contact area.

TT = 150 μinch (3.81 μm) minimum
 Tin/Lead on contact area.
 200 μinch (5.08 μm) minimum
 Tin/Lead on terminal area.

All options include: 50 μinch (1.27 μm) minimum Nickel underplate.