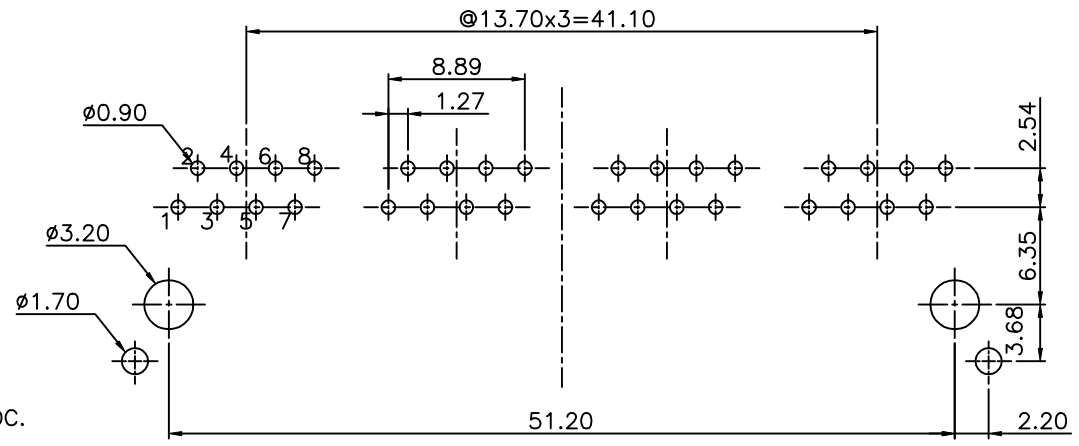
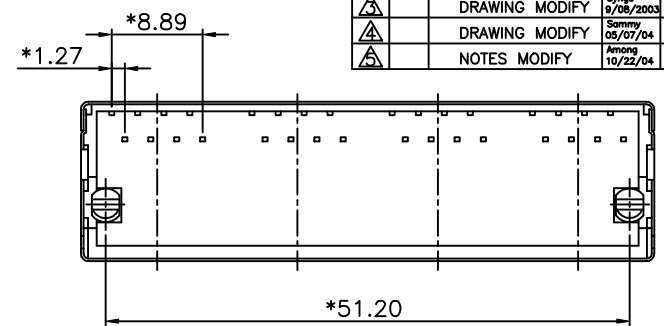
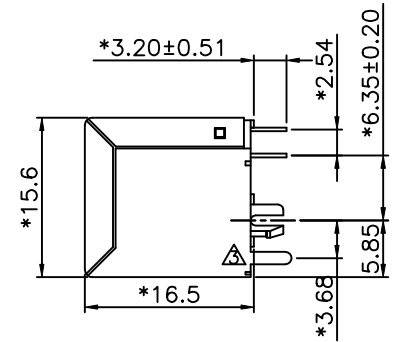
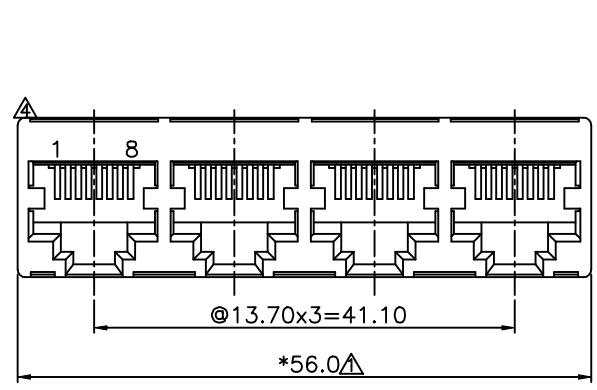


REVISION RECORD				
REV	ECO	DESCRIPTION	DRFT	CHKD
△		DIM MODIFY	SANDY 8/10/99	
△		ADD PART NO	YICUN 1/14/03	
△		DRAWING MODIFY	Syngs 9/08/2003	
△		DRAWING MODIFY	Sammy 05/07/04	
△		NOTES MODIFY	Amos 10/22/04	



PC Board Layout  
Component Side Shown

**NOTES:**

**ELECTRICAL:**

- 1. VOLTAGE RATING : 125 VAC RMS.
- 2. CURRENT RATING : 1.5 AMP.
- 3. CONTACT RESISTANCE : 30 MILLIOHMS MAX.
- 4. INSULATION RESISTANCE: 1000 MEGOHMS MIN @ 500 VDC.
- 5. DIELECTRIC STRENGTH : 1000 VAC RMS 60Hz, 1MIN.

**MECHANICAL:**

- 1. HOUSING MATERIAL : GLASS FILLED POLYESTER UL94V-0.
- 2. CONTACT MATERIAL : PHOSPHOR BRONZE t=0.35mm.
- △ 3. PLATING : GOLD PLATING OVER NICKEL.
- 4. OPERATING LIFE : 750 CYCLES MIN.
- 5. PCB RETENTION PRE-SOLDER : 1 LB MIN.
- 6. PCB RETENTION POST-SOLDER: 10 LBS MIN.

**ENVIRONMENTAL:**

- 1. STORAGE : -40°C TO +85°C.
- 2. OPERATION: -40°C TO +85°C.

MATES WITH MODULAR PLUG CONFORMING TO  
FCC PART 68, SUBPART F.

PART NUMBER: E5288-3XC14X

- SHIELD: 1-3u" 2-6u"
- 1-TIN 3-15u" 4-30u"
- 2-NICKEL 5-50u"

△ 4-SHIELD NICKEL PLATED ;TIN\_LEAD TBAS

MM (INCH)		DFTO YJK	DATE 4/12/99	FULL RISE ELECTRONIC CO., LTD	
TOLERANCES EXCEPT AS NOTED		CHKD SAMMY	DATE 2004/11/17		
DETACHED LISTS	MM	MFO	DATE	TITLE	
	.0 ±0.20	APPVLLUSHENG	DATE 2004/11/17		
	.00 ±0.15	MATERIAL :		TOP ENTRY GANG JACK	
	.000 ±0.075	QT'Y :			
ANGLES ±		FINISH :		DRAWING NO. GE523009	SIZE A3
THIRD ANGLE PROJECTION		SCALE :		/PART NO. SEE NOTE	
		DO NOT SCALE DRAWING		SHEET X	REV 5