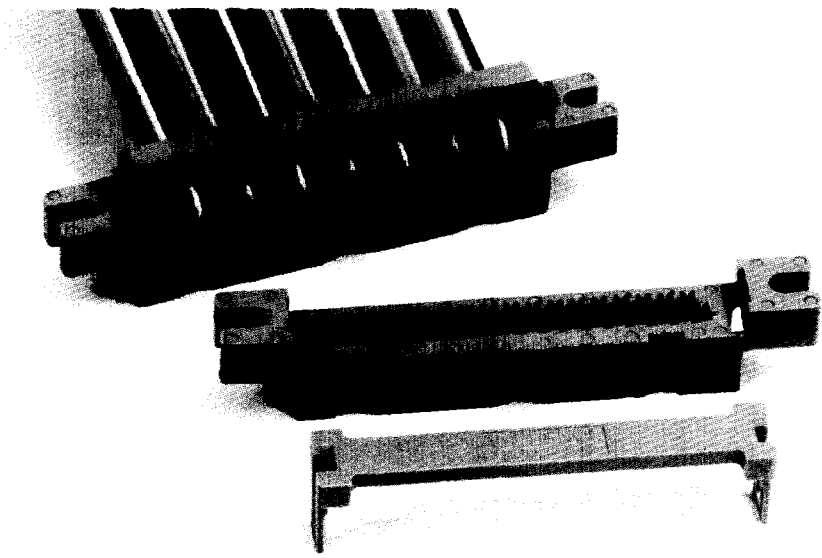


MALE PLUG CONNECTOR



description

Amphenol 822 male plug connector provides economical I/O interface, in-line cable splice and cable bus T-top connections where positive connect and fast disconnect capabilities are required.

The IDC design allows fast, one-step mass termination of planar cable on .050" centers. Cover assembly is open-ended, allowing either feed-through or daisy chain applications. Strain relief options are available.

The fully shrouded connector body provides maximum protection against contact damage. The contact arrangement is compatible with Amphenol 812 series sockets and other socket connectors with .100" x .100" contact spacing. Snap-in keys for adjacent polarization are available.

compatibility

822 series male plug connectors mate with the following Amphenol connectors:

812 socket series

The following Amphenol cable series are appropriate for use with these connectors:


132, 133-2801/2802, 133-2803/2804, 135, 191-2801,191-2811,193-2801

termination tooling

See page 58

See next page for dimensions and ordering information.

benefits

- One-step termination
- Adjacent polarization
- Duplex plated contacts
- Optional strain relief
- Open ended cover for feed-through and daisychain applications
- UL and CSA recognized 

characteristics

Physical

Insulation material: Glass reinforced polyester, UL 94V-O, grey
 Contact spacing: .100" x .100" (2.54mm x 2.54mm) grid, terminates to .050" flat cable
 Contact plating: 15µ" gold posts, nickel underplate; tin lead in IDC area
 Wire accomodation: AWG 26 stranded; AWG 28 solid and stranded; AWG 30 solid
 Operating temperature range:
 -55°C to +130°C
 (-67°F to +266°F)

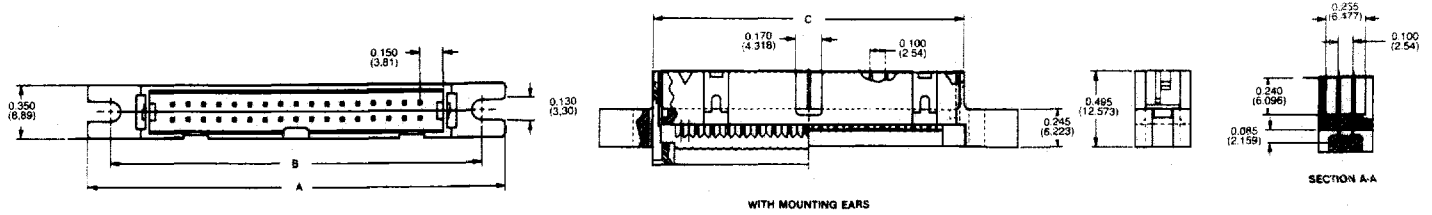
Electrical

Current rating: 1 amp
 Insulation resistance: .5 x 10⁹ ohms at 500 VDC
 Dielectric withstanding voltage: 500 VRMS

Standard Pitch
Sockets & Headers

MALE PLUG CONNECTOR

Standard Pitch
Sockets & Headers



Number of contacts	With mounting ears and with strain relief	Without mounting ears and without strain relief	With mounting ears and without strain relief	Without mounting ears and with strain relief	Dimensions in Inches (mm)		
					A	B	C
10	822-A010P-AF100	822-A010P-AF200	822-A010P-AF300	822-A010P-AF400	1.500 (38.1)	1.200 (30.48)	0.810 (20.57)
14	822-A014P-AF100	822-A014P-AF200	822-A014P-AF300	822-A014P-AF400	1.700 (43.18)	1.400 (35.36)	1.010 (25.65)
16	822-A016P-AF100	822-A016P-AF200	822-A016P-AF300	822-A016P-AF400	1.800 (45.72)	1.500 (38.10)	1.110 (28.19)
20	822-A020P-AF100	822-A020P-AF200	822-A020P-AF300	822-A020P-AF400	2.000 (50.80)	1.700 (43.18)	1.310 (33.27)
26	822-A026P-AF100	822-A026P-AF200	822-A026P-AF300	822-A026P-AF400	2.300 (58.42)	2.000 (50.80)	1.610 (40.89)
30	822-A030P-AF100	822-A030P-AF200	822-A030P-AF300	822-A030P-AF400	2.500 (63.50)	2.200 (55.88)	1.810 (45.97)
34	822-A034P-AF100	822-A034P-AF200	822-A034P-AF300	822-A034P-AF400	2.700 (68.58)	2.400 (60.96)	2.010 (51.05)
36	822-A036P-AF100	822-A036P-AF200	822-A036P-AF300	822-A036P-AF400	2.800 (71.12)	2.500 (63.58)	2.110 (53.59)
40	822-A040P-AF100	822-A040P-AF200	822-A040P-AF300	822-A040P-AF400	3.000 (76.20)	2.700 (68.58)	2.310 (58.67)
50	822-A050P-AF100	822-A050P-AF200	822-A050P-AF300	822-A050P-AF400	3.500 (88.9)	3.200 (81.28)	2.810 (71.37)
60	822-A060P-AF100	822-A060P-AF200	822-A060P-AF300	822-A060P-AF400	4.000 (101.60)	3.700 (93.98)	3.310 (84.07)
64	822-A064P-AF100	822-A064P-AF200	822-A064P-AF300	822-A064P-AF400	4.200 (106.68)	3.900 (99.06)	3.510 (89.15)

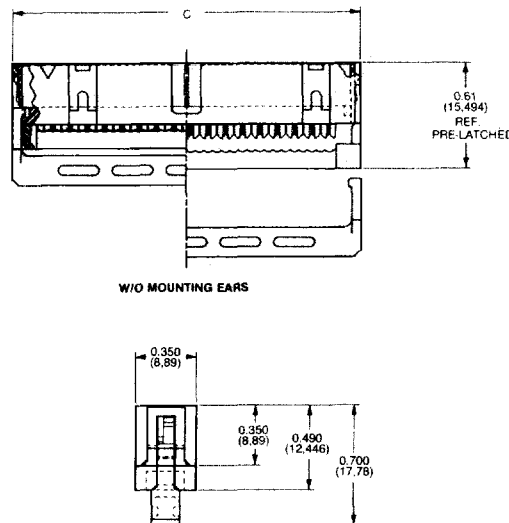
Standard product has 15 microinches gold plating on the contact area, tin on the solder tail.

Please contact the factory for plating options.

*Polarization tabs are available for these connectors (see below). For 10 pin connectors only, add "S" to the end of the part number to specify that the polarization slot is necessary. All other sizes include the slot.

optional strain relief

No. of Contacts	Part Number
10	842-800-2206-001
14	842-800-2206-002
16	842-800-2206-003
20	842-800-2206-004
26	842-800-2206-005
30	842-800-2206-006
34	842-800-2206-007
36	842-800-2206-008
40	842-800-2206-009
50	842-800-2206-010
60	842-800-2206-011
64	842-800-2206-012



polarization tab

Part Number: 842-800-1611-003

