

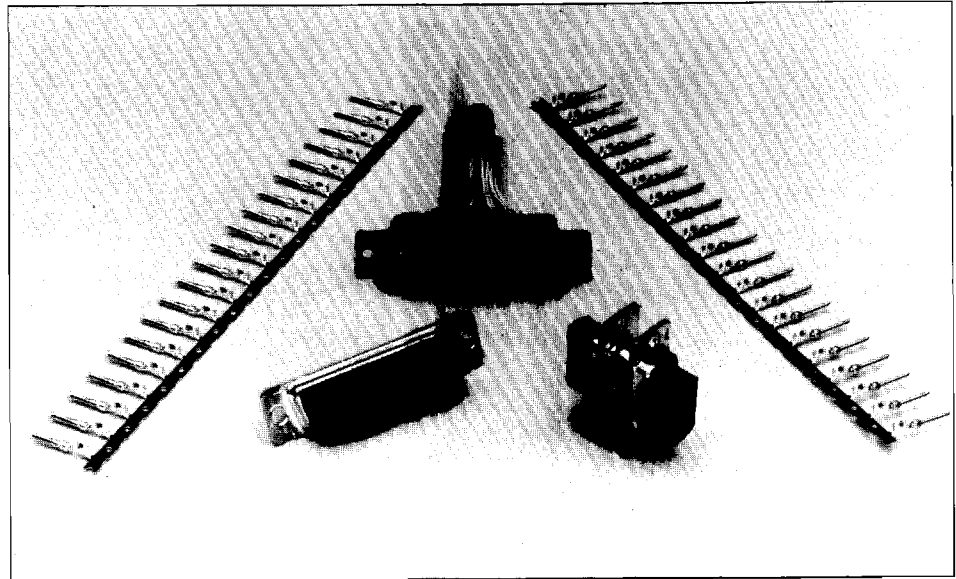
# AMPHENOL D-SUBMINIATURE REAR RELEASE CRIMP CONNECTOR

17 RR SERIES

Designed for high volume production, Amphenol's rear release crimp connector and contacts are a cost saver.

**FEATURES:**

- EMI/ESI shell configuration
- Economical crimp contact with insulation support
- Easy to read white on black numbering on insulator
- Removable, re-usable contact
- Automatic and manual tooling available
- Shrouded contact and crimp prevent shorting or arcing



**SPECIFICATIONS:**

**Temperature Range:**  
-55 C to +125 C

**Voltage Rating:**  
500 VAC at sea level

**Current Rating:**  
5 AMP

**Dielectric:**  
Glass filled thermoplastic, black, UL 94 VO

**Shells:**  
Steel/tin-plated, grounding indents on plug front shell

**Contacts:**  
Male: precision formed brass  
Female: precision formed phosphor bronze

**Contact Retention:**  
Initial 10 lb.

**Wire Types:**  
20-30 Awg max insulation o.d. .050 (1.27)

**ORDERING INFORMATION:**

**Contact Housings:**

Contacts	Receptacle	Plug
9	177 - RRE - 9S	777 - RRE - 9P
15	177 - RRA - 15S	777 - RRA - 15P
25	177 - RRB - 25S	777 - RRB - 25P
37	177 - RRC - 37S	777 - RRC - 37P
50	177 - RRD - 50S	777 - RRD - 50P

**Contacts:**

**17RR - D1 - F - 01 - XXX**

**Series** \_\_\_\_\_

**Code**    **Wire Gauge**  
D1        20 to 24 Awg  
D2        24 to 28 Awg

**Code**        **Packaging**  
100            Bag of 100 loose contacts  
400            Reel of 400  
2K             Reel of 2000  
10L            Reel of 10,000 (right to left feed)  
10R            Reel of 10,000 (left to right feed)

**Code**        **Contact**  
M            Male  
F            Female

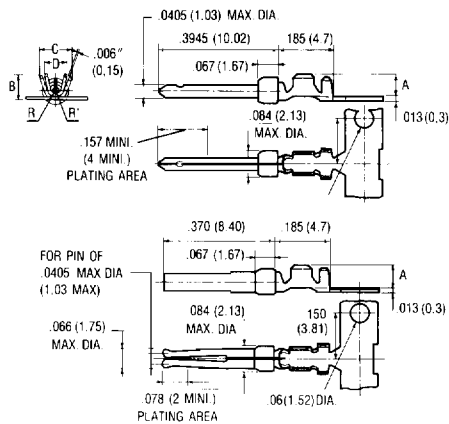
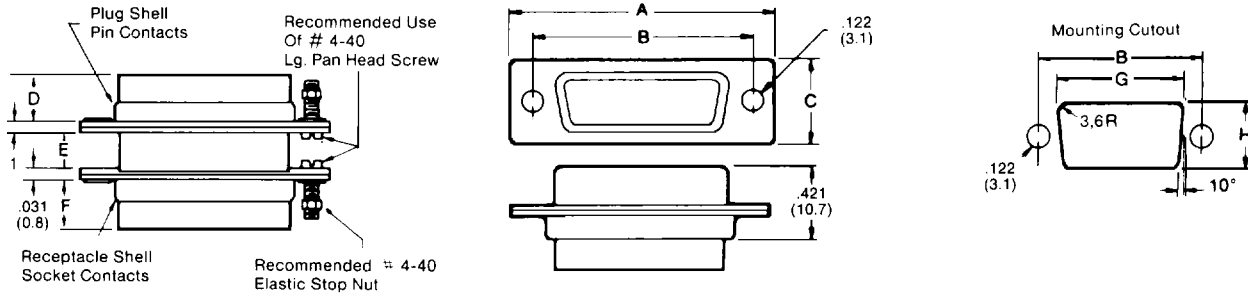
Code		Contact Plating
Duplex Plated*	Au Flash Plated**	Plating Thickness on Mating End of Contact
11	01	.000010" Gold over .000050" Nickel
12	02	.000020" Gold over .000050" Nickel
14	04	.000030" Gold over .000050" Nickel
16	06	.000050" Gold over .000050" Nickel

\* Duplex plated gold on mating end for length of .150 (3.8) on pins and .08 (2.0) on sockets. On termination end bright tin plating .000100" - .000200" (0.00754 - 0.00508). Entire contact underplated with minimum .000050 (0.00127) nickel.  
\*\*Gold plated on mating end for length .150 (3.8) on pins and .080 (2.0) on sockets. Gold flash on termination end. Entire contact underplated with minimum .000050" (0.00127) nickel.

# AMPHENOL D-SUBMINIATURE REAR RELEASE CRIMP CONNECTOR

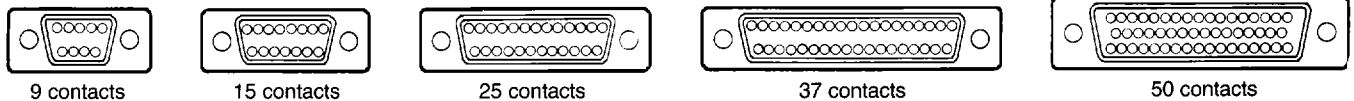
17 RR SERIES

## DIMENSIONS - inches (mm)



AWG for P&S	Dimensions					
	A	B	C	D	R	R'
		± .0078 (± 0.20)	-.0078 (-8.20)	-.0078 (-8.20)	± .004 (± 0.10)	± .004 (± 0.10)
20-24	.0708 ± .004 (1.80 ± 0.10)	.078 (2.00)	.098 (2.50)	.075 (1.90)	.033 (0.85)	.015 (0.40)
24-28	.0551 + .004 0 1.40 + 0.10 0	.059 (1.50)	.066 (1.70)	.059 (1.50)	.020 (0.50)	.012 (0.30)

## CONTACT ARRANGEMENTS



## dimensions - inches (mm)

	A max.	B	C max.	D	E	F	G (Min)		H (Min)	
							Back Mtg	Front Mtg	Back Mtg	Front Mtg
E	1.240 (31.5)	.984 (25)	.516 (13.1)	.358 (9.1)	.232 (5.9)	.358 (9.1)	.799 (20.3)	.831 (21.1)	.449 (11.4)	.504 (12.8)
A	1.567 (39.8)	1.312 (33.3)	.516 (13.1)	.358 (9.1)	.232 (5.9)	.358 (9.1)	1.118 (28.4)	1.161 (29.5)	.449 (11.4)	.504 (12.8)
B	2.110 (53.6)	1.852 (47.05)	.516 (13.1)	.358 (9.1)	.232 (5.9)	.358 (9.1)	1.654 (42)	1.701 (43.2)	.449 (11.4)	.504 (12.8)
C	2.756 (70)	2.500 (63.5)	.516 (13.1)	.358 (9.1)	.232 (5.9)	.358 (9.1)	2.303 (58.5)	2.346 (59.6)	.449 (11.4)	.504 (12.8)
D	2.661 (67.6)	2.406 (61.1)	.626 (15.9)	.358 (9.1)	.232 (5.9)	.358 (9.1)	2.209 (56.1)	2.283 (58)	.559 (14.2)	.618 (15.7)

**AMPHENOL D-SUBMINIATURE  
CRIMP TOOLS FOR 17RR SERIES CONTACTS**

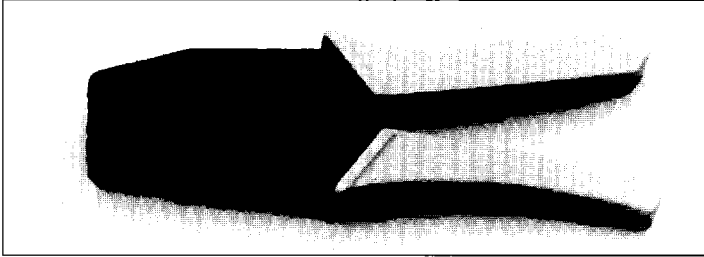
**17 RR SERIES**

**MANUAL TOOLS FOR CRIMPING**

**hand crimp tool**

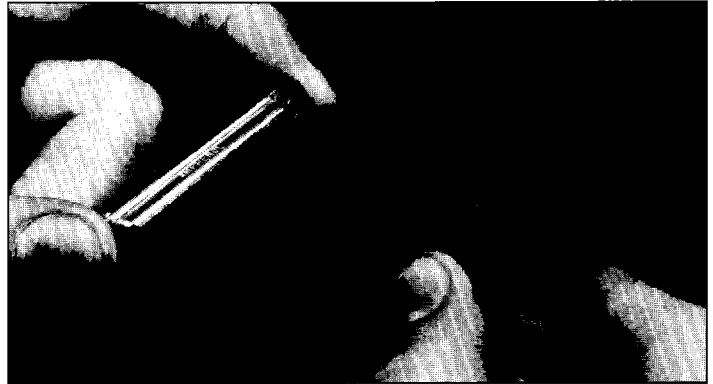
**part # 357-574**

for single contacts  
ratchet style for 20-30 AWG wire



**removal tool**

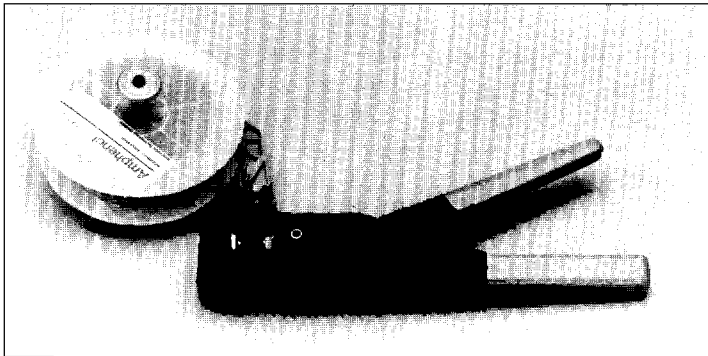
**part # 356-214**



**hand crimp tool**

**part #357-590**

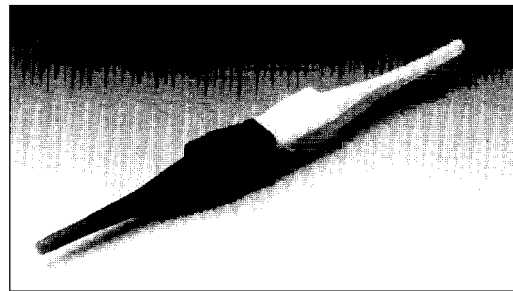
for reel of 400 contacts  
crimp dies for 357-590:  
357-590-104 for 20-24 AWG



**insertion/removal tool**

**part # 356-248**

double ended plastic type

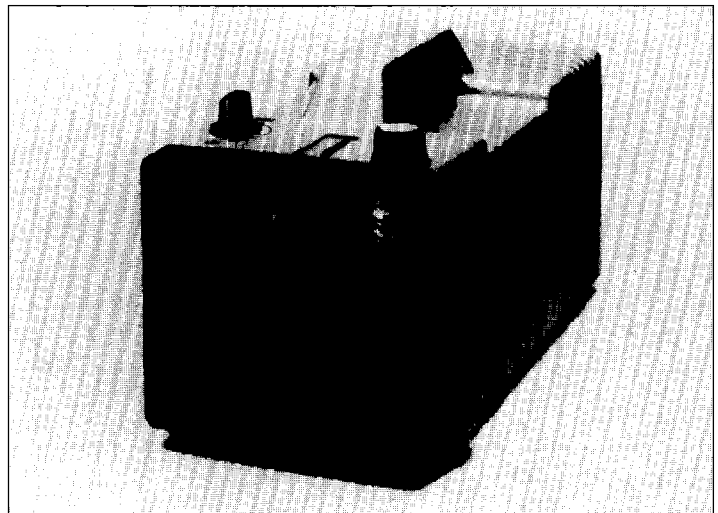


**AUTOMATIC TOOLS**

**insulation stripper**

**part # 359-2004**

high speed precision insulation stripper has a stripping range of 14-30 AWG. Can strip 1000-1500 pieces/hour. Adjustable stripping lengths from .06"-40".



**AMPHENOL D-SUBMINIATURE  
CRIMP TOOLS FOR 17RR SERIES CONTACTS**

**17 RR SERIES**

**AUTOMATIC TOOLS**

**motor-driven "crimp box" part #359-2002**

for medium volume  
can crimp 600-900 contacts per hour  
use with reels of 2000 or 1000  
crimp dies:  
359-1075-104 20-24 AWG  
359-1072-102 24-28 AWG

**semi-automatic crimper part # 359-2100**

for high volume  
can crimp 1000-1300 contacts per hour  
crimp dies:  
359-513 for 20-24 AWG  
359-523 for 24-28 AWG



(stripper box not included)

**stripper-crimper part # 359-2003**

for high volume  
can crimp 1000-1300 contacts per hour  
In one cycle the acrimat will strip the wire, cut the contact off the carrier strip, and crimp the contact. Designed for left feed reels only.  
crimp dies:  
359-1076-104 for 20-24 AWG  
359-1076-102 for 24-28 AWG

