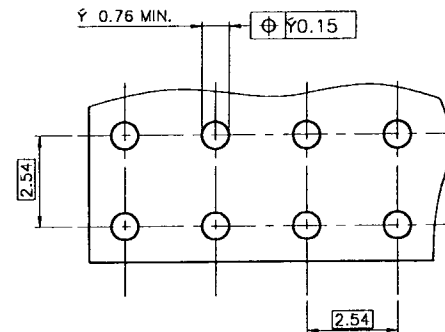
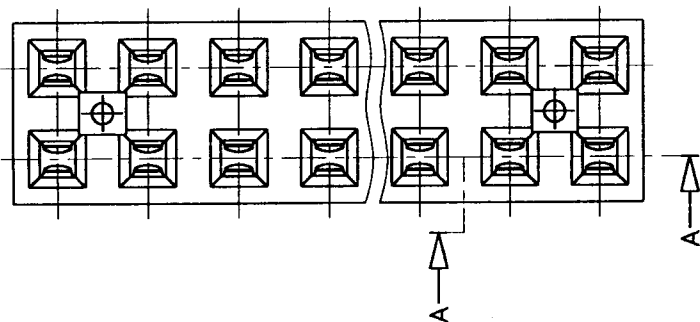
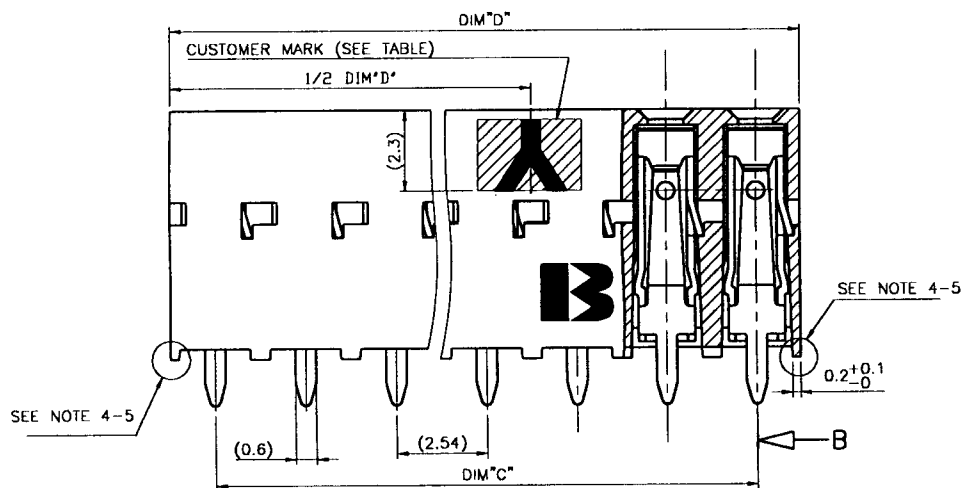


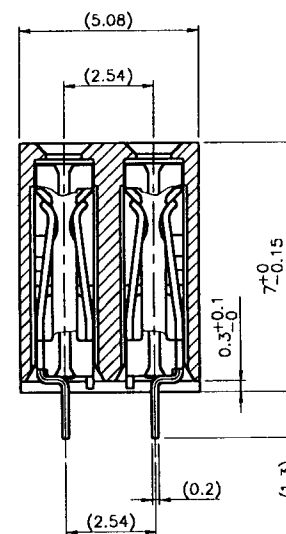
PRODUCT N°	MATERIAL	CUSTOMER MARK	STAND OFF	DIM"C"	DIM"D"
71958-YXX	SEE NOTE 1	NONE	SEE NOTE 4	SEE TABLE SHEET 2/2	
71958-YXXJ	SEE NOTE 2	A	SEE NOTE 4		
71958-YXXR	SEE NOTE 1	T	SEE NOTE 4		
71958-YXXU	SEE NOTE 2	A	SEE NOTE 5		
71958-YXXV	SEE NOTE 1	NONE	SEE NOTE 5		
71958-YXXW	SEE NOTE 2	NONE	SEE NOTE 5		



RECOMMENDED HOLE PATTERN



SECTION A-A



SECTION B-B

NOTES:

- 1 - MATERIAL HOUSING: THERMOPLASTIC POLYESTER 30% GLASS FILLED, COLOUR BLACK. FLAME RETARDANT PER UL-94 CATEGORY V0.
- 2 - MATERIAL HOUSING: PCT HIGH TEMPERATURE 30% GLASS FILLED, COLOUR BLACK. FLAME RETARDANT PER UL-94 CATEGORY V0.
- 3 - MATERIAL TERMINAL: PHOSPHOR BRONZE 3/4 HARD.
- 4 - NO STAND OFF AT EACH END EXCEPT FROM 2X2 TO 2X7 POSITION
- 5 - STAND OFF AT EACH END IS ON TOTAL WIDTH OF CONNECTOR FOR POSITIONS 2X9 UP TO 2X50 AND NO STAND OFF FOR POSITIONS 2X9 UP TO 2X50
- 6 - NO PARTICLE OF ANY MATERIAL ABOVE .127 mm ON IT'S LONGER DIMENSION ALLOWED.
- 7 - SOLDER TAILS ARE FULLY POST PLATED

PRODUCT N°	PLATING CODE	CONTACT AREA	SOLDER TAIL (SEE NOTE 6)	
71958-5XXZ	2µm 80 µm	Au MIN. OVER	1.3µm 50 µm Ni MIN.	SnPb OVER Ni
71958-4XXZ	5 µm 200 µm	SnPb MIN. OVER	1.3µm 50 µm Ni MIN.	SnPb OVER Ni
71958-3XXZ	0.75 µm 30 µm	Au MIN. OVER	1.3µm 50 µm Ni MIN.	SnPb OVER Ni

PLATING EXPLANATION

SEE NOTES				Tolerances unless otherwise specified		CUSTOMER COPY		BERG ELECTRONICS	
itr	act no	dr	date	linear		projection		TITLE TOP ENTRY D.R	
J	F80682	JMP	98.12.03					SHORT LEGS	
D	F70164	PM2	97.03.20	angles				product family	DUBOX VCC
E	F70408	PM2	97.04.24	dr	P.H.221	96.07.17	mm	code	213
F	F70612	AM	97.09.04	engr	JM PHANVAN	96.07.17	scale	size	dwg no
C	F80172	JMP	98.03.24	chr	P.H.221	96.07.17	10:1	A2	71958
H	F80180	YMO	98.04.03	app	JMP	96.07.17		sheet	1 of 2
sheet	revision	J	E						
index	sheet	1	2						

PRODUCT NUMBER	NUMBER OF POS.	DIM"C"	DIM"D"
71958-Y02 Z	2 x 02	2.54/ .100	5.00/ .197
71958-Y03 Z	2 x 03	5.08/ .200	7.54/ .297
71958-Y04 Z	2 x 04	7.62/ .300	10.08/ .397
71958-Y05 Z	2 x 05	10.16/ .400	12.62/ .497
71958-Y06 Z	2 x 06	12.70/ .500	15.16/ .597
71958-Y07 Z	2 x 07	15.24/ .600	17.70/ .697
71958-Y08 Z	2 x 08	17.78/ .700	20.24/ .797
71958-Y09 Z	2 x 09	20.32/ .800	22.78/ .897
71958-Y10 Z	2 x 10	22.86/ .900	25.32/ .997
71958-Y11 Z	2 x 11	25.40/1.000	27.86/1.097
71958-Y12 Z	2 x 12	27.94/1.100	30.40/1.197
71958-Y13 Z	2 x 13	30.48/1.200	32.94/1.297
71958-Y14 Z	2 x 14	33.02/1.300	35.48/1.397
71958-Y15 Z	2 x 15	35.56/1.400	38.02/1.497
71958-Y16 Z	2 x 16	38.10/1.500	40.56/1.597
71958-Y17 Z	2 x 17	40.64/1.600	43.10/1.697
71958-Y18 Z	2 x 18	43.18/1.700	45.64/1.797
71958-Y19 Z	2 x 19	45.72/1.800	48.18/1.897
71958-Y20 Z	2 x 20	48.26/1.900	50.72/1.997
71958-Y21 Z	2 x 21	50.80/2.000	53.26/2.097
71958-Y22 Z	2 x 22	53.34/2.100	55.80/2.197
71958-Y23 Z	2 x 23	55.88/2.200	58.34/2.297
71958-Y24 Z	2 x 24	58.42/2.300	60.88/2.397
71958-Y25 Z	2 x 25	60.96/2.400	63.42/2.497
71958-Y26 Z	2 x 26	63.50/2.500	65.96/2.597
71958-Y27 Z	2 x 27	66.04/2.600	68.50/2.697
71958-Y28 Z	2 x 28	68.58/2.700	71.04/2.797
71958-Y29 Z	2 x 29	71.12/2.800	73.58/2.897
71958-Y30 Z	2 x 30	73.66/2.900	76.12/2.997

PRODUCT NUMBER	NUMBER OF POS.	DIM"C"	DIM"D"
71958-Y31 Z	2 x 31	76.20/3.000	78.66/3.097
71958-Y32 Z	2 x 32	78.74/3.100	81.20/3.197
71958-Y33 Z	2 x 33	81.28/3.200	83.74/3.297
71958-Y34 Z	2 x 34	83.82/3.300	86.28/3.397
71958-Y35 Z	2 x 35	86.36/3.400	88.82/3.497
71958-Y36 Z	2 x 36	88.90/3.500	91.36/3.597
71958-Y37 Z	2 x 37	91.44/3.600	93.90/3.697
71958-Y38 Z	2 x 38	93.98/3.700	96.44/3.797
71958-Y39 Z	2 x 39	96.52/3.800	98.98/3.897
71958-Y40 Z	2 x 40	99.06/3.900	101.52/3.997
71958-Y41 Z	2 x 41	101.60/4.000	104.06/4.097
71958-Y42 Z	2 x 42	104.14/4.100	106.60/4.197
71958-Y43 Z	2 x 43	106.68/4.200	109.14/4.297
71958-Y44 Z	2 x 44	109.22/4.300	111.68/4.397
71958-Y45 Z	2 x 45	111.76/4.400	114.22/4.497
71958-Y46 Z	2 x 46	114.30/4.500	116.76/4.597
71958-Y47 Z	2 x 47	116.84/4.600	119.30/4.697
71958-Y48 Z	2 x 48	119.38/4.700	121.84/4.797
71958-Y49 Z	2 x 49	121.92/4.800	124.38/4.897
71958-Y50 Z	2 x 50	124.46/4.900	126.92/4.997

71958-XXXX

CUSTOMER MARK CODE
NUMBER OF POSITIONS
PLATING CODE

ALL DIMENSIONS UNLESS OTHERWISE SPECIFIED ARE IN MILLIMETERS
 DIMENSIONS IN PARENTHESES ARE IN INCHES
 DIMENSIONS IN BRACKETS ARE TYPICAL

BERG
 ELECTRONICS

ALL DIMENSIONS UNLESS OTHERWISE SPECIFIED ARE IN MILLIMETERS
 DIMENSIONS IN PARENTHESES ARE IN INCHES
 DIMENSIONS IN BRACKETS ARE TYPICAL

part code SEE NOTES SHEET 1		tolerances unless otherwise specified		CUSTOMER COPY	BERG ELECTRONICS	
lit.	part no	date	linear	projection	file TOP ENTRY SHORT LEGS	
B	F40194	PNZ 94.03.10			product family DX VCC DR	
C	F60525	PNZ 96.07.17			code 213	
D	F70184	PNZ 97.03.21	angles		sheet 2 of 2	
E	F70406	PNZ 94.04.24			scale N/A	
			eng		A2 71958	
			chr			
			spcl			
sheet index	revision sheet					