

Tous droits strictement reserves. Reproduction ou communication a des tiers interdite sous quelque forme que ce soit sans autorisation écrite du propriétaire. Propriété de c FCI. Droits de reproduction FCI.

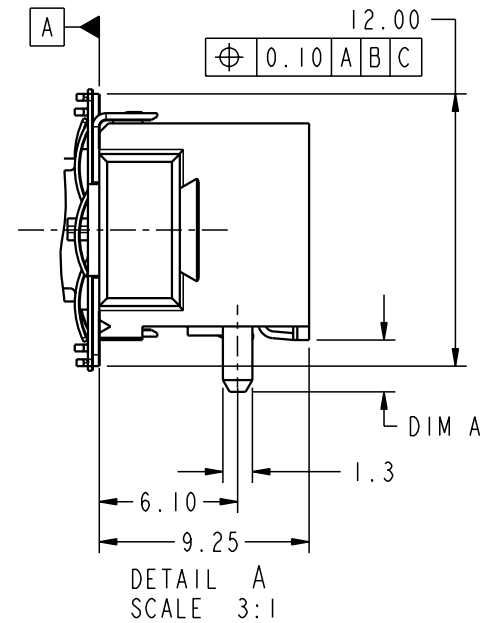
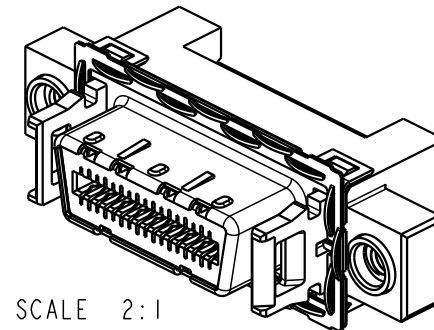
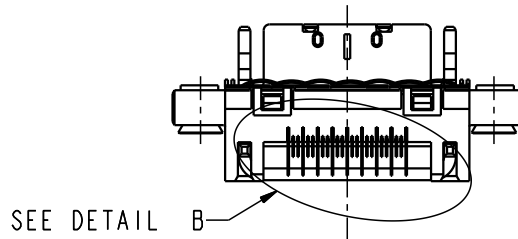
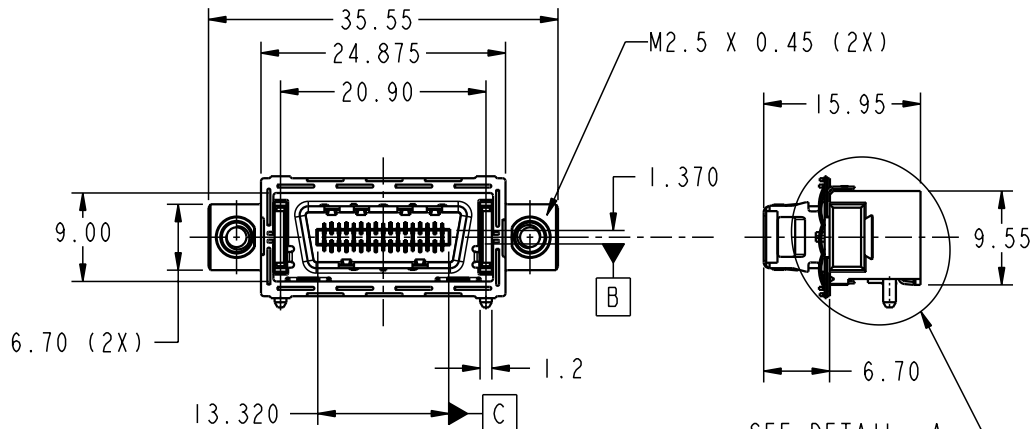
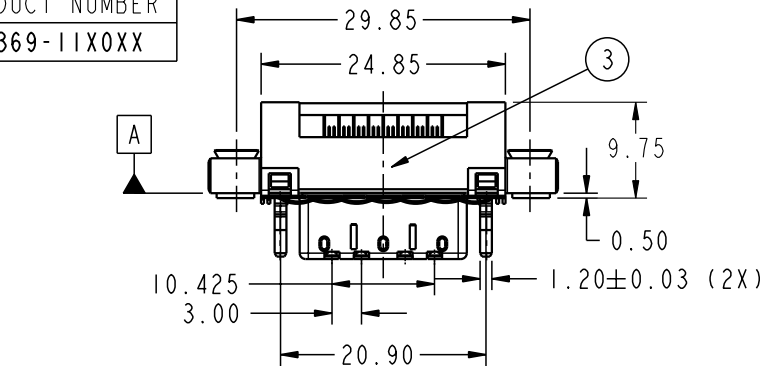
A
FCI

All rights strictly reserved. Reproduction or issue to third parties in any form whatever is not permitted without written authority from the proprietor. Property of FCI. Copyright FCI.

A

B

PRODUCT NUMBER
58369-11X0XX



mat'l code				tolerances unless otherwise specified				CUSTOMER		<div><div>A</div><div>FCI</div><div>www.fciconnect.com</div></div>									
ltr	ecn no.	dr	date	linear	0.X ±0.3				projection	COPY		<div>title</div> <div>4x R.A. RECEPT. ASS'Y.</div> <div>W/MOUNTING TABS</div>							
A	V21008	SCS	6/05/02		0.XX ±0.10					MM									
B	V21067	SCS	6/14/02		0.XXX ±0.050					scale									
				angles	0° ±2°														
				dr	R. DRAGG00 1/7/02						product family					EyeMax (tm)		code	
				engr	STAN OLSON 09/11/01						size					dwg no		213	
				chr	T BRUNGARD 3/18/02						A					58369		sheet	
				appd	S. OLSON 1/7/02				13:10									1 of 8	
sheet index		revision		B	B	B	B	B	B	B									
		sheet		1	2	3	4	5	6	7	8								

Pro/E

PDM: Rev:B

STATUS:Released

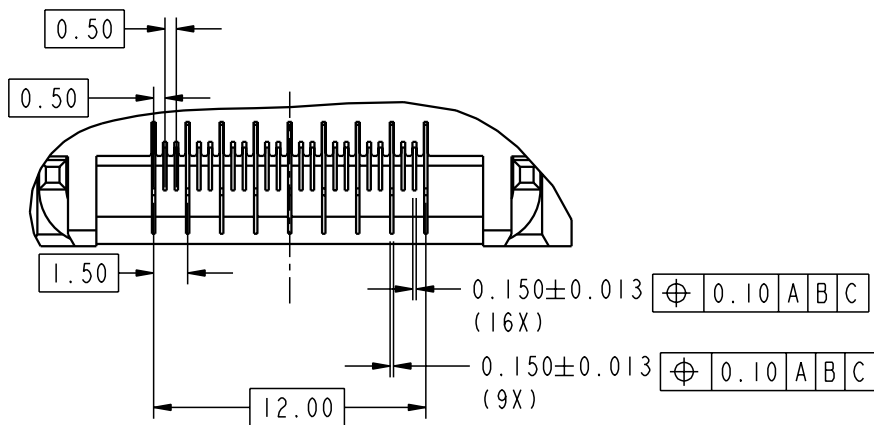
Printed: Jun 25, 2002

Tous droits strictement reserves. Reproduction ou communication a des tiers interdite sous quelque forme que ce soit sans autorisation écrite du propriétaire. Propriété de c FCI. Droits de reproduction FCI.

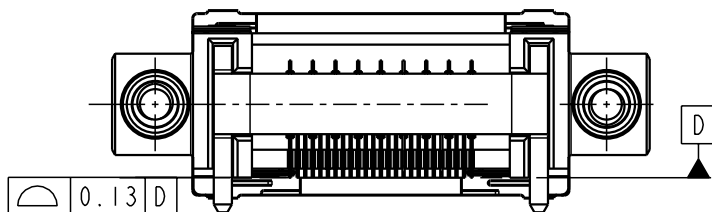
All rights strictly reserved. Reproduction or issue to third parties in any form whatever is not permitted without written authority from the proprietor. Property of FCI. Copyright FCI.

A
FCI

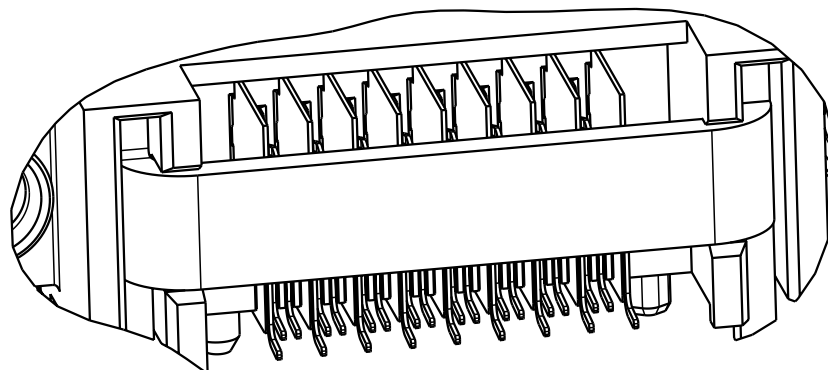
PRODUCT NUMBER
58369-11X0XX



DETAIL B
SCALE 3:1



COPLANARITY MEASUREMENT TO BE TAKEN
AT BOTTOM MOST POINT OF CONTACT TAILS



SCALE 4:1

mat'l code				tolerances unless otherwise specified		CUSTOMER		<div><div>A</div><div>FCI</div><div>www.fciconnect.com</div></div>			
ltr	ecn no.	dr	date	linear	0.X ± 0.3		projection	COPY		title 4X R.A. RECEPT. ASS'Y. W/MOUNTING TABS	
B					0.XX ± 0.10						
					0.XXX ± 0.050						
				angles	0° ± 2°		 scale 2:1	product family		EyeMax (tm) code	
				dr	R. DRAGG00	1/7/02		size	dwg no	213	
				engr	STAN OLSON	09/11/01				sheet	
				chr	T BRUNGARD	3/18/02				2	
				appd	S. OLSON	1/7/02		A		58369	
sheet index		revision sheet									

Pro/E

cage code 22526

PDM: Rev:B

STATUS:Released

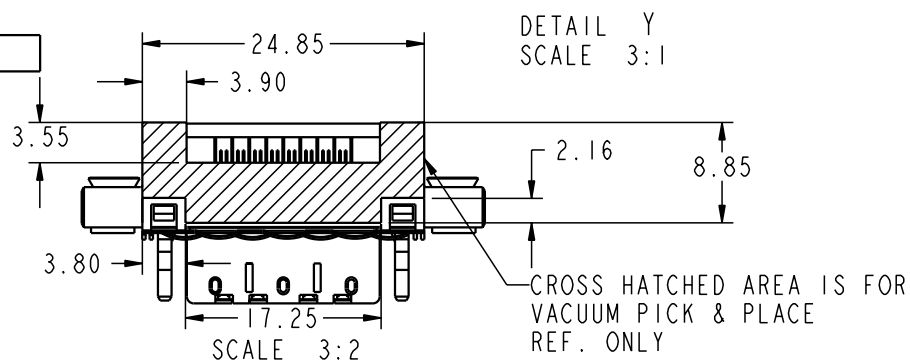
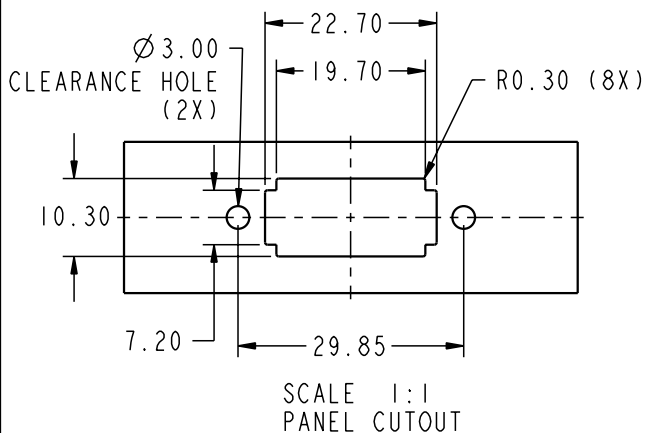
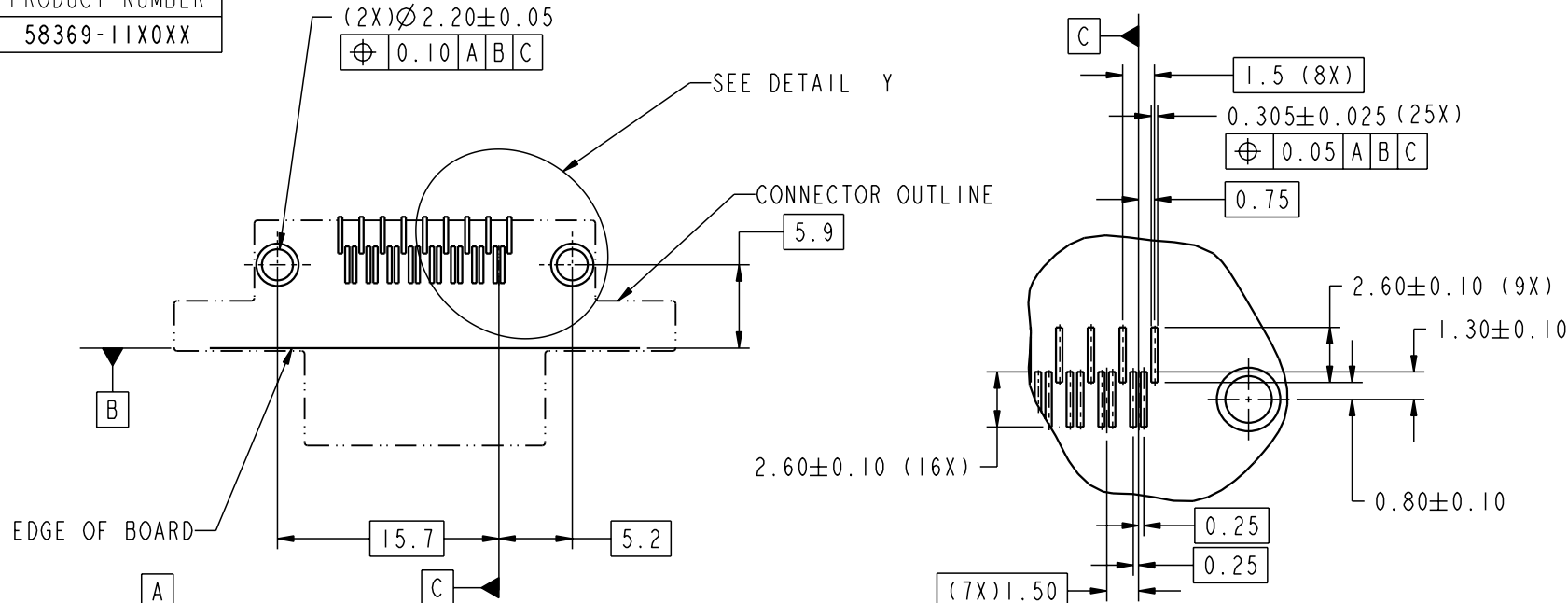
Printed: Jun 25, 2002

Tous droits strictement reserves. Reproduction ou communication a des tiers interdite sous quelque forme que ce soit sans autorisation écrite du propriétaire. Propriété de c FCI. Droits de reproduction FCI.

FCI

All rights strictly reserved. Reproduction or issue to third parties in any form whatever is not permitted without written authority from the proprietor. Property of FCI. Copyright FCI.

PRODUCT NUMBER
58369-11X0XX



mat'l code				SEE NOTES		tolerances unless otherwise specified		CUSTOMER		A FCI www.fciconnect.com	
ltr	ecr no.	dr	date	linear		0.X ± 0.3		COPY		title 4X R.A. RECEPT. ASS'Y. W/MOUNTING TABS	
B						0.XX ± 0.10		projection			
						0.XXX ± 0.050					
				angles		0° ± 2°		MM		product family EyeMax (tm)	code
					dr	R. DRAGG00	1/7/02	scale		size	213
					enrg	STAN OLSON	09/11/01			dwg no	sheet
					chr	T BRUNGARD	3/18/02			58369	3
					appd	S. OLSON	1/7/02				
sheet index	revision sheet										

Pro/E

cage code 22526

PDM: Rev:B

STATUS:Released

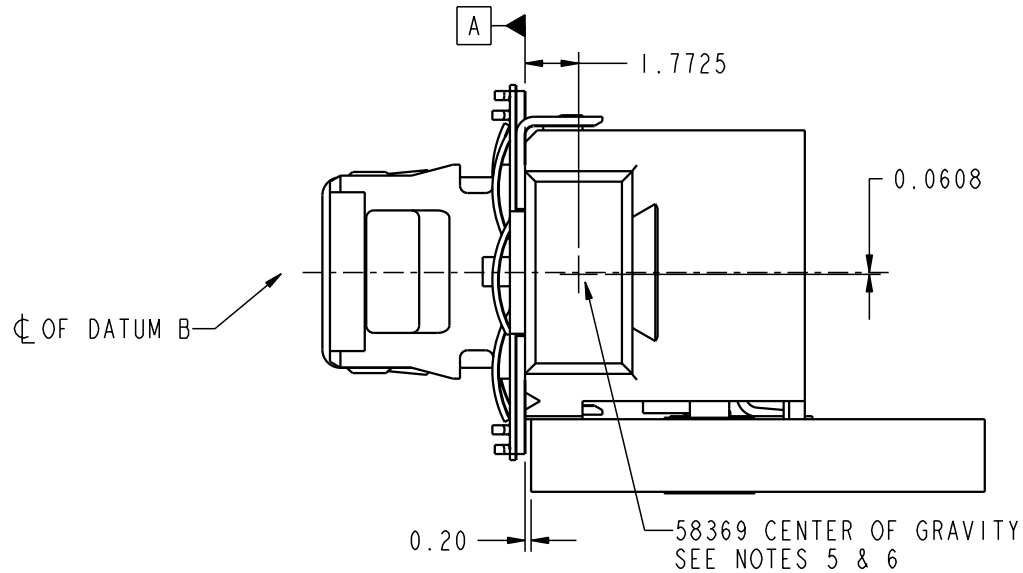
Printed: Jun 25, 2002




Tous droits strictement reserves. Reproduction ou communication a des tiers interdite sous quelque forme que ce soit sans autorisation écrite du propriétaire. Propriete de c FCI. Droits de reproduction FCI.

All rights strictly reserved. Reproduction or issue to third parties in any form whatever is not permitted without written authority from the proprietor. Property of FCI. Copyright FCI.

FCI

PRODUCT NUMBER
58369-11X0XX



mat'l code				SEE NOTES				tolerances unless otherwise specified				CUSTOMER				<div> www.fciconnect.com</div>				
ltr		ecn no.		dr		date		linear	0.X ±0.3				COPY				<div></div>			
B									0.XX ±0.10				projection							
									0.XXX ±0.050											
								angles	0° ±2°								title 4x R.A. RECEPT. ASS'Y. W/MOUNTING TABS			
								dr	R. DRAGG00 1/7/02				<div></div>				product family EyeMax (tm) code			
								enrg	STAN OLSON 09/11/01								size dwg no			
								chr	T BRUNGARD 3/18/02				scale				213			
								appd	S. OLSON 1/7/02								A 58369			
																sheet 4				
sheet index		revision sheet																		

Pro/E

cage code 22526

PDM: Rev:B

STATUS:Released

Printed: Jun 25, 2002

PRODUCT NUMBER

58369-11X0XX

STEP 2:
INSTALL 2 M2.5 PANEL MOUNTING
SCREWS. (NOT SUPPLIED WITH CONNECTOR
ASSEMBLY. SEE PRINT 58370
FOR OPTIONS)

PCI BRACKET/PANEL-

-EMI GASKET

```

STEP 1
INSERT CONNECTOR INTO
PCI BRACKET/PANEL
COMPRESSING EMI GASKET

```

CONNECTOR APPLICATION TO PCI BRACKET/PANEL

[illegible]

Pro/E

cage code	22526
-----------	-------

PDM: Rev:B

STATUS: **Released**

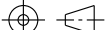
Printed: Jun 25, 2002

Tous droits strictement reserves. Reproduction ou communication a des tiers interdite sous quelque forme que ce soit sans autorisation écrite du propriétaire. Propriete de c FCI. Droits de reproduction FCI.

All rights strictly reserved. Reproduction or issue to third parties in any form whatever is not permitted without written authority from the proprietor. Property of FCI. Copyright FCI.

A
FCI

PRODUCT NUMBER	BOARD THICKNESS	DIM A
58369-1110XX	1.6mm	2.3
58369-1120XX	2.4mm	3.1
58369-1130XX	4.0mm	4.7

mat'l code				SEE NOTES				tolerances unless otherwise specified				CUSTOMER				<div><div>A</div><div>FCI</div><div>www.fciconnect.com</div></div>			
lfr	ecn no.	dr	date	linear	0.X ±0.3				COPY				<div>projection</div> <div></div>						
B	-	-	-		0.XX ±0.10				title										
					0.XXX ±0.050				4X R.A. RECEPT. ASS'Y. W/MOUNTING TABS										
				angles	0° ±2°								product family						
				dr	R. DRAGG00	1/7/02			<div>MM</div> <div>←————→</div> <div>scale</div> <div>13:10</div>				EyeMax (tm)				code		
				engr	STAN OLSON	09/11/01							size		dwg no		213		
				chr	T BRUNGARD	3/18/02							A		58369		sheet		
				appd	S. OLSON	1/7/02									6				
sheet index		revision sheet																	

cage code 22526

Pro/E

PDM: Rev:B

STATUS:Released

Printed: Jun 25, 2002



PRODUCT NUMBER
58369-11X0XX

58369-11X0XX

KEYING OPTIONS, SEE PAGE 8
0-NONE
1-INFINIBAND
2-CUSTOM

PACKAGING
1-TAPE & REEL
2-TRAY
3-

PCB THICKNESS
1-1.6mm
2-2.4mm
3-4.0mm

TAIL PLATING
1-100µin. SnPb

INTERFACE PLATING
1-Au over Ni

CONNECTOR NOTES:

①. HOUSING MATERIAL: UL94 V-O LCP RESIN.
SIGNAL PIN MATERIAL: COPPER ALLOY.
GROUND CONTACT MATERIAL: COPPER ALLOY.

2. PLATING: SEE TABULATION

③. MANUFACTURER'S NAME, P/N, AND DATE CODE TO APPEAR ON THIS SURFACE.

4. PRODUCT SPECIFICATION GS-12-209.

5. CONNECTOR WEIGHT= 7.06 grams

6. CENTER OF GRAVITY IS 1.7725 FROM DATUM A AND 0.0608 FROM DATUM B

7. PACKAGING SPECIFICATION GS-14-794

PCB NOTES:

8. ALL DIMENSIONS ARE BASIC UNLESS OTHERWISE SPECIFIED.

9. ALL HOLE DIAMETERS ARE FINISHED HOLE SIZE

mat'l code				SEE NOTES				tolerances unless otherwise specified				CUSTOMER				FCI				www.fciconnect.com			
lfr	ecr no.	dr	date																				
B	-	-	-	linear				0.X ±0.3				COPY											
								0.XX ±0.10				projection											
								0.XXX ±0.050															
				angles				0° ±2°															
				dr	R. DRAGG00	1/7/02						MM											
				enrg	STAN OLSON	09/11/01																	
				chr	T BRUNGARD	3/18/02																	
				appd	S. OLSON	1/7/02						scale											
												13:10											
sheet	revision																						
index	sheet																						

title 4X R.A. RECEPT. ASS'Y.
W/MOUNTING TABS

product family EyeMax (tm) code 213

size dwg no 58369 sheet 7

cage code 22526

Pro/E

PDM: Rev:B

STATUS:Released

Printed: Jun 25, 2002

Tous droits strictement reserves. Reproduction ou communication a des tiers interdite sous quelque forme que ce soit sans autorisation écrite du propriétaire. Propriete de c FCI. Droits de reproduction FCI.

A
FCI

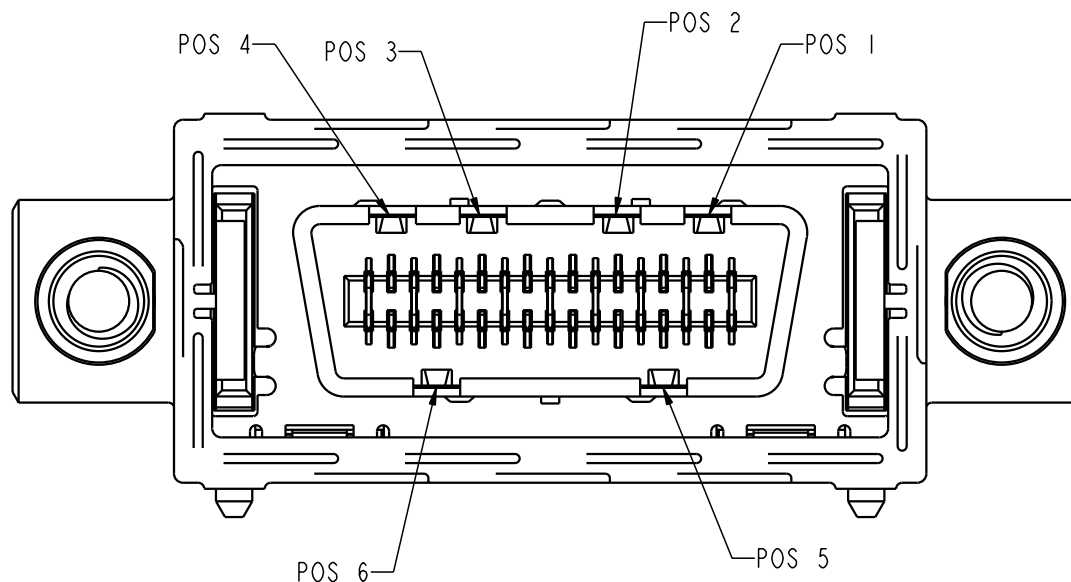
All rights strictly reserved. Reproduction or issue to third parties in any form whatever is not permitted without written authority from the proprietor. Property of FCI. Copyright FCI.

A

B

PRODUCT NUMBER
58369-11X0XX

KEYING POSITIONS



A

B

mat'l code				SEE NOTES				tolerances unless otherwise specified				CUSTOMER				<div><div>A</div><div>FCI</div><div>www.fciconnect.com</div></div>			
ltr	ecn no.	dr	date	linear	0.X ±0.3				COPY				<div>projection</div> <div></div>	title 4X R.A. RECEPT. ASS'Y. W/MOUNTING TABS					
B	-	-	-		0.XX ±0.10														
					0.XXX ±0.050														
				angles	0° ±2°				<div><div>MM</div><div>←→</div></div> <div>scale</div> <div>4 : 1</div>				product family EyeMax (tm) code 213 size dwg no 58369 sheet 8						
				dr	R. DRAGG00		1/7/02												
				engr	STAN OLSON		09/11/01												
				chr	T BRUNGARD		3/18/02												
				appd	S. OLSON		1/7/02												
sheet index		revision sheet																	

Pro/E

cage code
22526

PDM: Rev:B

STATUS:Released

Printed: Jun 25, 2002