




Diagram of the rear of the 52304-200\*\* Above Board. The board is shown with various pins and dimensions. The dimensions are 3.1" and 3.1". The pins are labeled PIN B1, PIN B35, PIN B34, and PIN B68. The board is labeled 52304-200\*\* ABOVE BOARD.

6 DO NOT TOUCH AND KEEP CLEAN THE SURFACES OF PCB OF HEADER ASS'Y.

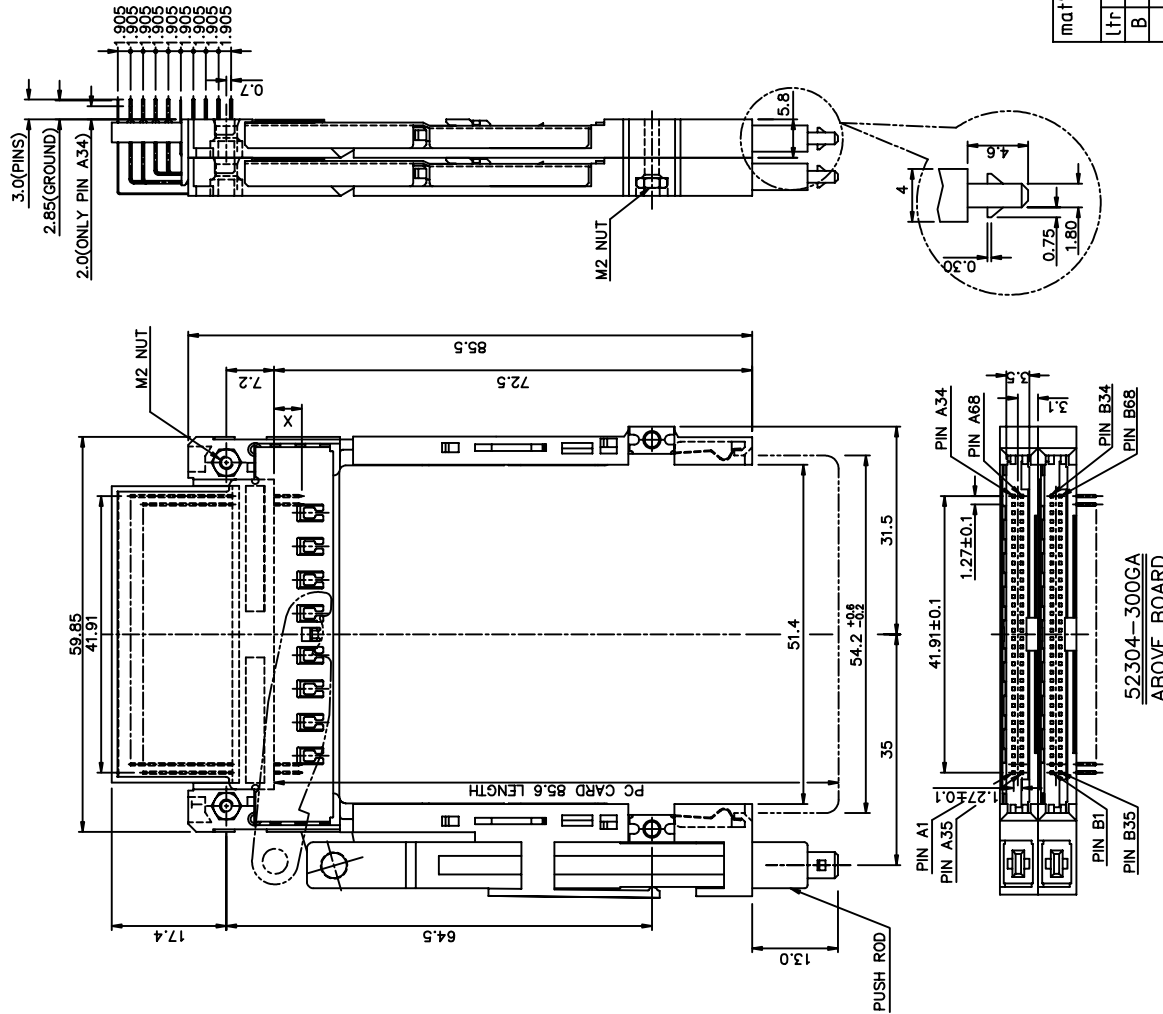
Form: A3

mat'l. code				surface		tolerance		projection		product family	
				ISO 1302		ISO 406 ISO 150		100% 		PCMCIA	
date				tolerances unless otherwise specified						title	
ecm no				angles		linear				R/A CARBUS HEADER DOUBLE DECK ASS'Y	
B				±2'				MM 			
				dr		Mike Zhou 07/03/06				dwg no	
				engr		Mike Zhou 07/03/06				sheet 2 of 6 size	
				chr		David Qin 07/03/06				52304 A4	
				appd		Jack Wang 07/03/06				CUSTOMER Drawing	
revision											
sheet											
index											

6 DO NOT TOUCH AND KEEP CLEAN THE SURFACES OF PCB OF HEADER ASS'Y.

4.25±0.1	3.5±0.1	5.0±0.1
OTHERS	36,67	1,17,34,35,51,68




PRODUCT NO.	PUSH ROD COLOR
52304-300GA	BLACK
52304-300GALF	BLACK



NOTES:

- 4.0mm MIN CARD EJECT.
- MATERIAL:
  - EJECT HEADER ASS'Y
  - PLASTIC HOUSING: LCP UL94V-0 BLACK
  - PIN: COPPER ALLOY
  - GROUND SHIELD: PHOSPHOR BRONZE
  - PLASTIC GUIDE: POLYPHTHAMID UL94V-0 BLACK
  - PLATE: STAINLESS
  - EMI CONTACT: PHOSPHOR BRONZE
- FINISH  
PIN :  
UNDER PLATING: 0.5um MIN. Ni  
CONTACT AREA: 0.1um MIN. GOLD OVER  
SOLDER TAIL: 2.5um MIN. Pd-Ni  
SOLDER TAIL(IF LEAD FREE P/N): 2.5um MIN. PURE Sn  
GROUND SHIELD :  
UNDER PLATING: 0.75um MIN. Ni  
CONTACT SURFACE: 0.03um GOLD MIN. OVER  
PdNi: 0.5um MIN.(GOLD FLASH DOUBLE SIDES)  
OR: 0.38um GOLD(ONE SIDE ONLY)  
4 PUSH ROD LOCATION AND P.C.B. ARE AS APPEARS INSTALLED  
5 DIM "X"

4.25±0.1	3.5±0.1	5.0±0.1
OTHERS	36,67	1,17,34,35,51,68
- DO NOT TOUCH AND KEEP CLEAN THE SURFACES OF PCB OF HEADER ASS'Y.

mat'l. code			surface	tolerance	projection	product family
			ISO 1302	ISO 406 ISO 1101		PCMCIA
lfr	ecr no	dr	date	tolerances unless otherwise specified		title
B				±0.3	 MM	R/A CARDBUS HEADER DOUBLE DECK ASS'Y
				linear		
				±2°	scale 1:6:1	
				dr	Mike Zhou 07/03'06	dwg no
				enrg	Mike Zhou 07/03'06	sheet 3 of 6 size
				chr	David Qin 07/03'06	52304
				appd	Jack Wang 07/03'06	A4
sheet	revision					type
index	sheet					CUSTOMER
						Drawing

mat'l. code		surface		tolerance		projection		product family	
ISO 1302	ISO 1302	ISO 406	ISO 1101	ISO 1101		PCMCIA			
tolerances unless otherwise specified		linear		±0.3		MM		title	
angles		linear		±0.3		MM		R/A CARBUS HEADER DOUBLE DECK ASS'Y	
±2°		linear		±0.3		scale 1:6:1		dwg no	
dr		Mike Zhou		07/03/06		sheet 4 of 6		size	
engr		Mike Zhou		07/03/06		52304		A4	
chr		David Qin		07/03/06		CUSTOMER		Drawing	
appd		Jack Wang		07/03/06					
revision		sheet		index					

3. LEAD FREE PRODUCT MEETS EUROPEAN UNION DIRECTIVES AND OTHER COUNTRY REGULATIONS AS DISCRIBED IN GS-22-008

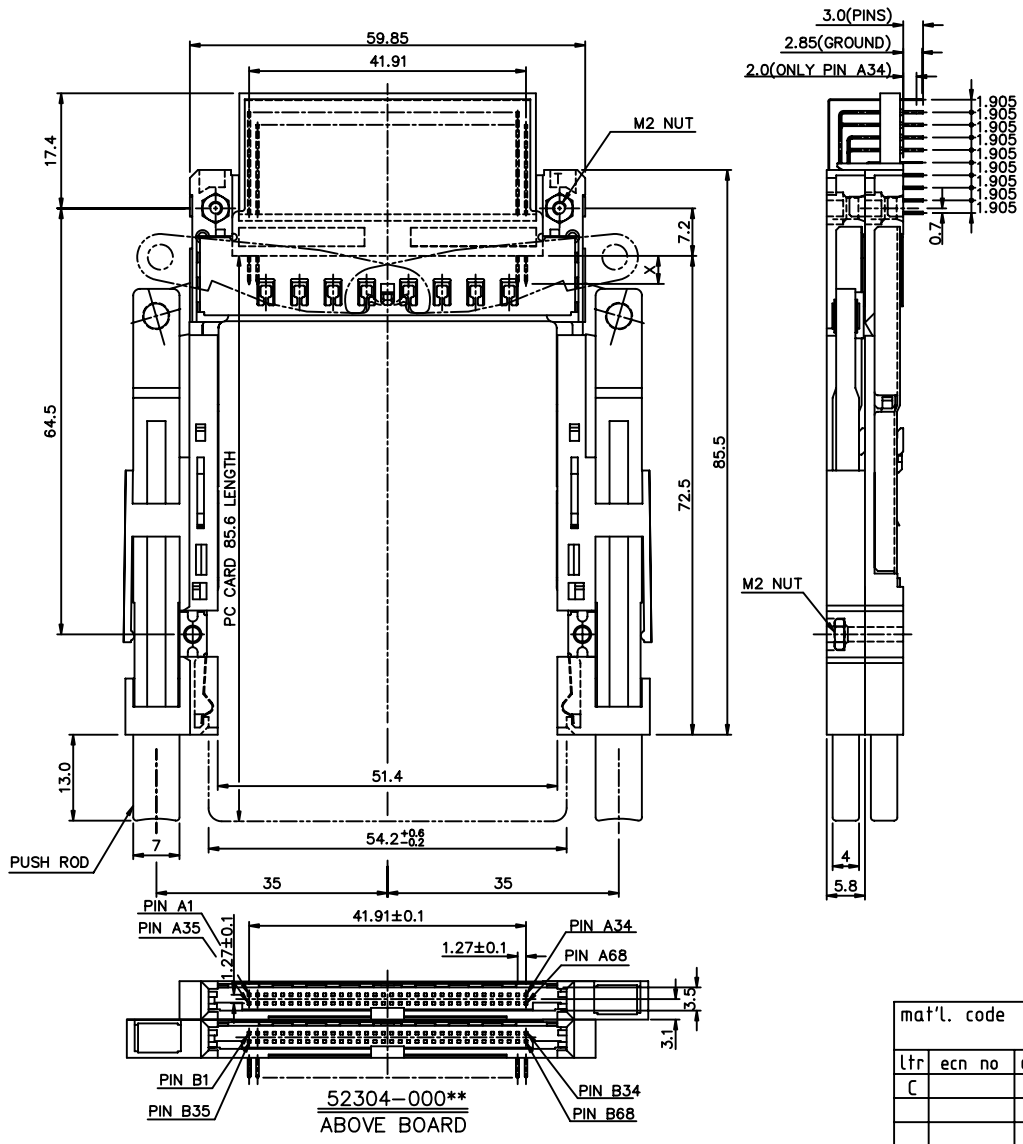
4.25±0.1	3.5±0.1	5.0±0.1
OTHERS	36,67	1,17,34,35,51,68

FCI CONFIDENTIAL



This document is the property of and embodies CONFIDENTIAL and PROPRIETARY information of FCI. No part of the information shown on this document may be used in any way or disclosed to others without the written consent of FCI. Copyright FCI

PRODUCT NO.	PUSH ROD COLOR
52304-000CA	BLACK
52304-000CH	NATURAL
52304-000CALF	BLACK
52304-000CHLF	NATURAL

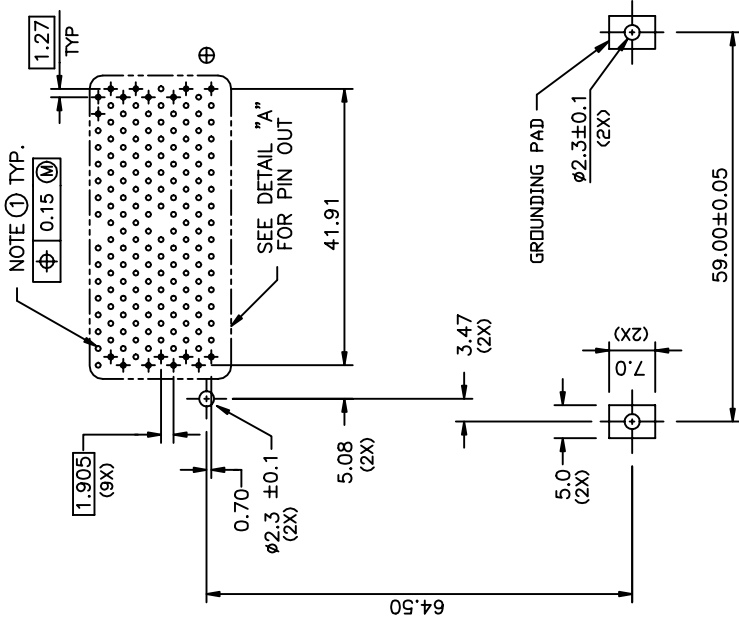


NOTES:

- 4.0mm MIN CARD EJECT.
- MATERIAL:  
2.1 EJECT HEADER ASS'Y  
PLASTIC HOUSING: LCP UL94V-0 BLACK  
PIN: COPPER ALLOY  
GROUND SHIELD: PHOSPHOR BRONZE  
PLASTIC GUIDE: POLYPHTHARAMID UL94V-0 BLACK  
PLATE: STAINLESS  
EMI CONTACT: PHOSPHOR BRONZE
- FINISH  
PIN :  
UNDER PLATING: 0.5um MIN. Ni  
CONTACT AREA: 0.1um MIN. GOLD OVER  
0.5um MIN. Pd-Ni  
SOLDER TAIL: 2.5um MIN. Sn-Pb  
SOLDER TAIL(IF LEAD FREE P/N): 2.5um MIN. PURE Sn  
GROUND SHIELD :  
UNDER PLATING: 0.75um MIN. Ni  
CONTACT SURFACE: 0.03um GOLD MIN. OVER  
PdNi 0.5um MIN.(GOLD FLASH DOUBLE SIDES)  
OR, 0.38um GOLD(ONE SIDE ONLY)
- PUSH ROD LOCATION AND P.C.B. ARE AS APPEARS INSTALLED
- DIM "X"

4.25±0.1	3.5±0.1	5.0±0.1
OTHERS	36,67	1,17,34,35,51,68
- DO NOT TOUCH AND KEEP CLEAN THE SURFACES OF PCB OF HEADER ASS'Y.

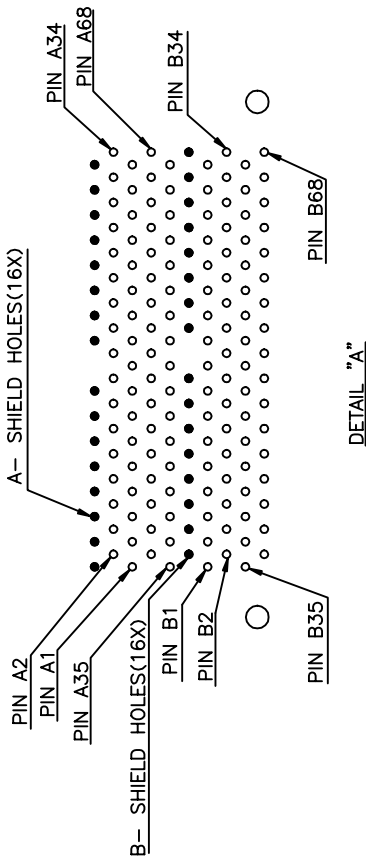
mat'l. code				surface	tolerance	projection	product family	
				ISO 1302	ISO 406 ISO 101		PCMCIA	
ltr	ecn no	dr	date	tolerances unless otherwise specified			title	
C				angles	linear	±0.3	R/A CARDBUS HEADER	
				±2°			DOUBLE DECK ASS'Y	
				dr	Mike Zhou	07/03'06	dwg no	sheet 5 of 6 size
				enr	Mike Zhou	07/03'06	52304	A4
				chr	David Qin	07/03'06		
				appd	Jack Wang	07/03'06		
sheet	revision						type	Drawing
index	sheet							



P.C.B. LAYOUT

NOTES:

- 1 RECOMMENDED DIAMETER IS  $\phi 1.0$ . FOR PROCESSES USING PASTE REFLOW, HOLE MAY BE AS SMALL AS  $\phi 0.79$ .
- 2 ALL TOLERANCES  $\pm 0.15$  UNLESS NOTED.



mat'l. code				surface	tolerance	projection	product family
ltr	ecn no	dr	date	ISO 1302	ISO 406 ISO 1101		PCMCA
B				tolerances unless otherwise specified	$\pm 0.1$	MM	R/A CARDBUS HEADER DOUBLE DECK ASS'Y
				angles	linear	scale 1:5:1	
				$\pm 2^\circ$			
				dr	Mike Zhou 07/03'06		dwg no sheet 6 of 6 size
				engr	Mike Zhou 07/03'06		52304 A4
				chr	David Qin 07/03'06		CUSTOMER Drawing
				appd	Jack Wang 07/03'06		
sheet index	revision sheet						