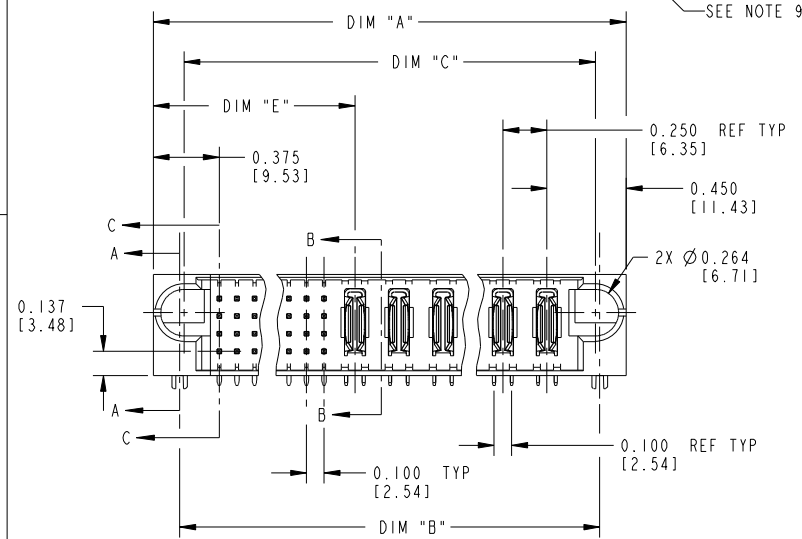
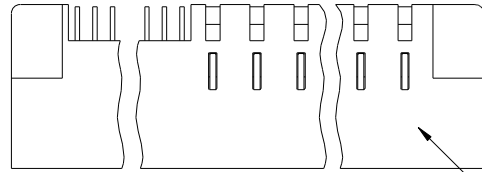


Tous droits strictement réservés. Reproduction ou communication à des tiers interdite, sous quelque forme que ce soit sans autorisation écrite du propriétaire. Propriété de c FCI. Droits de reproduction FCI.

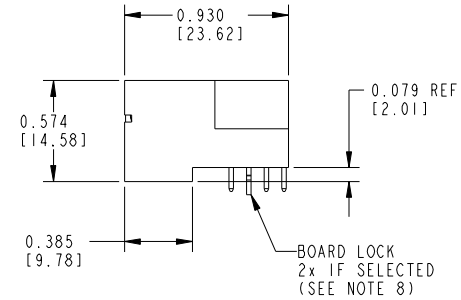


All rights strictly reserved. Reproduction or issue to third parties in any form whatever is not permitted without written authority from the proprietor. Property of FCI. Copyright FCI.

PRODUCT NUMBER
51721- A00CCDDEF... NOTE ①
SEE NOTE 1



SEE NOTE 9



mat'l code SEE NOTE 2				tolerances unless otherwise specified		CUSTOMER COPY	www.fciconnect.com title RIGHT ANGLE HEADER w/GUIDE PIN SIGNAL / POWER
ltr	ecn no.	dr	date	linear	.XXX±.01/.X±.3		
H	DG05-0132	SJ	06/02/05		.XXX±.005/.XX±.13	product family <b>PWRBLADE</b> code <b>213</b> size dwg no <b>51721</b> SHEET 1 OF 3	
J	DG05-0479	CS	11/18/05	angles	.XXX±.0020/.XXX±.051		
K	DG06-0011	CS	01/13/06		0°±2°	scale 1:1 A	
L	DG06-0252	JMG	06/27/06	dr	<b>DBOGLE</b> 05-13-99		
M	DG06-0367	JULIA	09/07/06	enr	<b>J. BROWN</b> 05-13-99		
N	DG08-0239	JC	09/11/08	chr	<b>J. BROWN</b> 05-13-99		
				appd	<b>J. BROWN</b> 05-13-99		
sheet index	revision sheet	N 1	N 2	N 3			cage code 22526

THIS FILE WAS ORIGINALLY CREATED IN THE PRO ENGINEER ENVIRONMENT AND ANY FUTURE REVISIONS TO THIS FILE MUST BE MADE IN THE PRO ENGINEER ENVIRONMENT

form no. 7530-001-103

Tous droits strictement réservés. Reproduction ou communication à des tiers interdite, sous quelque forme que ce soit sans autorisation écrite du propriétaire. Propriété de c.FCI. Droits de reproduction FCI.



All rights strictly reserved. Reproduction or issue to third parties in any form whatever is not permitted without written authority from the proprietor. Property of FCI. Copyright FCI.

PRODUCT NUMBER
51721- A00CCDDEF -- NOTE ①
SEE NOTE 1

DIM	LENGTH FORMULAS (SEE NOTE 10)
DIM "A"	.100 [2.54] x (CCC/4) + .250 [6.35] x DD + .650 [16.51] (NOTE 10)
DIM "B"	.100 [2.54] x (CCC/4) + .250 [6.35] x DD + .350 [8.89]
DIM "C"	.100 [2.54] x (CCC/4) + .250 [6.35] x DD + .300 [7.62]
DIM "E"	.100 [2.54] x (CCC/4) + .450 [11.43]
DIM "F"	.100 [2.54] x (CCC/4) + .250 [6.35] x DD + .680 [17.27]
DIM "H"	.100 [2.54] x (CCC/4) + .250 [6.35]

CONNECTOR NOTES

- ① PRODUCT NUMBER CODE:  
51721 - A 00 CCC DD E F LF
- NO THIS SUFFIX: 100u"/2.54um SnPb ON PCB INTERFACE
  - ADD THIS SUFFIX: 78u"/2.00um Sn ON PCB INTERFACE
  - RETENTION TO PCB (NOTE 8)
  - TAIL OPTIONS (NOTE 7)
  - NUMBER OF RIGHT END POWER CONTACTS (NOTE 6)
  - NUMBER OF SIGNAL CONTACTS (NOTE 5)
  - ALWAYS ZERO (NOTE 4)
  - PLATING (NOTE 3)
  - BASE NUMBER
- ② HOUSING MATERIAL: GLASS FILLED V-O HIGH TEMP THERMO PLASTIC.  
SIGNAL CONTACT MATERIAL: COPPER ALLOY  
POWER CONTACT MATERIAL: COPPER ALLOY
- ③ PLATING OPTION:  
 1 = SEE PRINT 10064183 FOR PLATING SPEC OF 51721-100CCDDEF; 51721-100CCDDEFLF
- ④ THIS PART NOT AVAILABLE WITH LEFT SIDE POWER CONTACTS.
- ⑤ SIGNAL CONTACTS, 004 TO 148 AVAILABLE.
- ⑥ RIGHT END POWER CONTACTS, 01 TO 20 AVAILABLE.  
MAXIMUM OF 20 POWER CONTACTS PER CONNECTOR.
- ⑦ TAIL OPTIONS:  
A = .135 [3.43] SOLDER TO BOARD
- ⑧ RETENTION TO PCB OPTIONS:  
A = BOARD LOCK (REQUIRES .098 + .002, -.001 [2.49 +0.05, -0.03] THRU HOLE IN PCB).  
MOUNTING FOOT THICKNESS: .220 [5.59]  
B = .150 [3.81] THRU HOLE (REQUIRES .158±.003 [4.01±08] THRU HOLE IN PCB).  
MOUNTING FOOT THICKNESS: .160 [4.06]
- ⑨ MANUFACTURE'S NAME, P/N, AND DATE CODE TO APPEAR ON THIS SURFACE.
- ⑩ THE MAXIMUM OVERALL LENGTH (DIM A) OF A PART IS 8.00 [203.2]
11. PRODUCT SPECIFICATION GS-12-149  
12. REFERENCE 51730 FOR SELECT LOAD/FMLB WORKSHEET

PCB NOTES:

13. ALL DIMENSIONS ARE BASIC UNLESS OTHERWISE SPECIFIED.  
14. ALL THROUGH HOLES ARE LOCATED WITH A TRUE POSITION OF .004 [0.10]  
15. ALL HOLE DIAMETERS ARE FINISHED HOLE SIZE.  
16.  $\varnothing 0.0453 \pm .001$  [1.151 ±0.02] DRILLED HOLES PLATED WITH 0.0003 [0.007] MIN SnPb OR Sn OVER 0.001 [1.03] TO .003 [0.08] PLATING TO ACHIEVE A .040±.003 [1.02±08] HOLE.  
17. A SYMBOL WILL BE NEXT TO ANY DIMENSION, VIEW, OR NOTE WHICH HAS BEEN MODIFIED WITH THE CURRENT DRAWING REVISION.

THIS FILE WAS ORIGINALLY CREATED IN THE PRO ENGINEER ENVIRONMENT AND ANY FUTURE REVISIONS TO THIS FILE MUST BE MADE IN THE PRO ENGINEER ENVIRONMENT

mat'l code		tolerances unless otherwise specified		CUSTOMER COPY		FCI www.fciconnect.com	
ltr	ecr no.	dr	date	linear	.XX±.01/.X±.3	projection	title
N					.XXX±.005/.XX±.13		RIGHT ANGLE HEADER w/GUIDE PIN SIGNAL / POWER
				angles	.XXX±.0020/.XXX±.051	$0^\circ \pm 2^\circ$	product family
				dr	C.BAROT 05-04-99	INCH / MM	PWRBLADE
				enrg	J. BROWN 05-04-99	scale	code
				chr	J. BROWN 05-04-99	1:1	213
				appd	J. BROWN 05-04-99	size	2 OF 3
sheet index	revision sheet					dwg no	
						51721	

form no. 7530-001-103

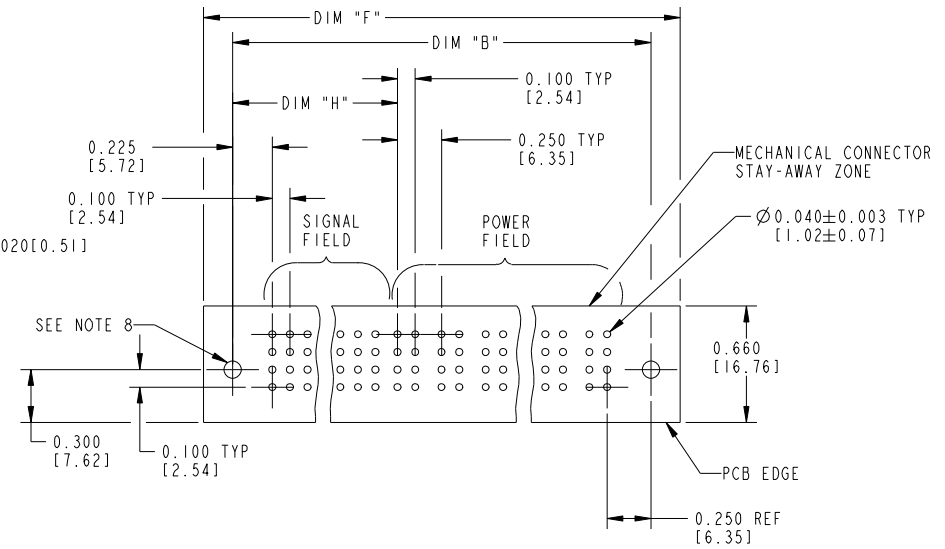
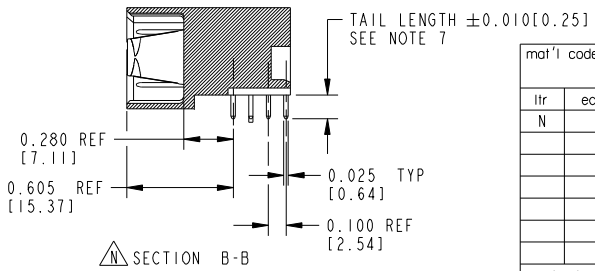
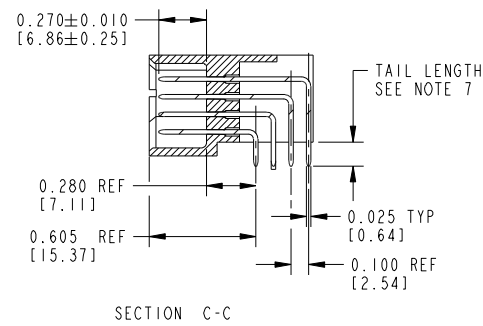
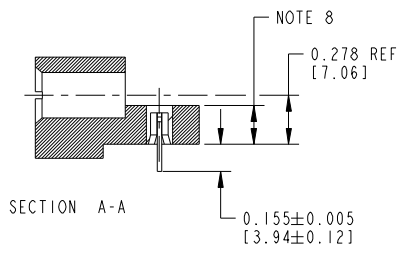
cage code 22526

PRODUCT NUMBER  
51721- A00CCDDEF \_ \_  
NOTE ①

Tous droits strictement réservés. Reproduction ou communication à des tiers interdite, sous quelque forme que ce soit sans autorisation écrite du propriétaire. Propriété de c FCI. Droits de reproduction FCI.



All rights strictly reserved. Reproduction or issue to third parties in any form whatever is not permitted without written authority from the proprietor. Property of FCI. Copyright FCI.



mat'l code		tolerances unless otherwise specified		CUSTOMER COPY		FCI www.fciconnect.com	
ltr	ecn no.	dr	date	linear	.XX±.01/.X±.3	projection	title
N				linear	.XXX±.005/.XX±.13	INCH / MM	RIGHT ANGLE HEADER w/GUIDE PIN SIGNAL / POWER
				angles	.XXX±.0020/.XXX±.051	scale	product family
				dr	0°±2°	1:1	PWRBLADE
				enr	J. BROWN 05-13-99	size	code
				chr	J. BROWN 05-13-99	A	213
				appd	J. BROWN 05-13-99	dwg no	SHEET
sheet index	revision sheet					51721	3 OF 3
						cage code	
						22526	

form no. 7530-001-103

cage code 22526