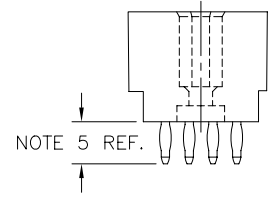
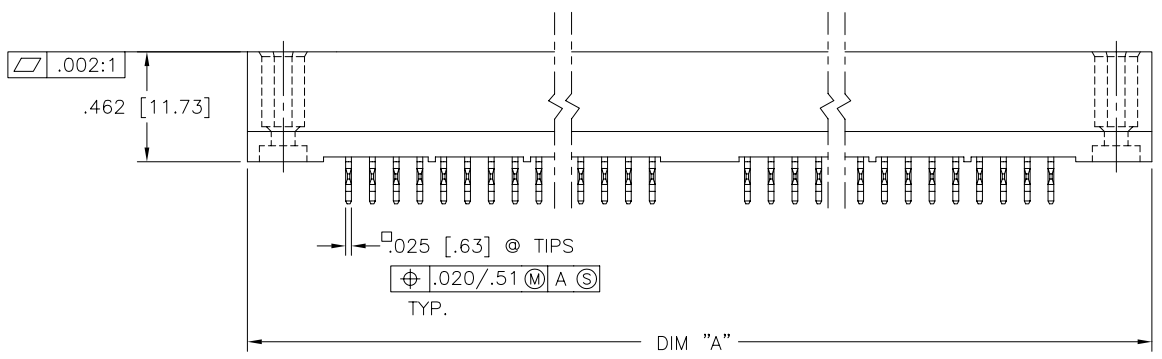
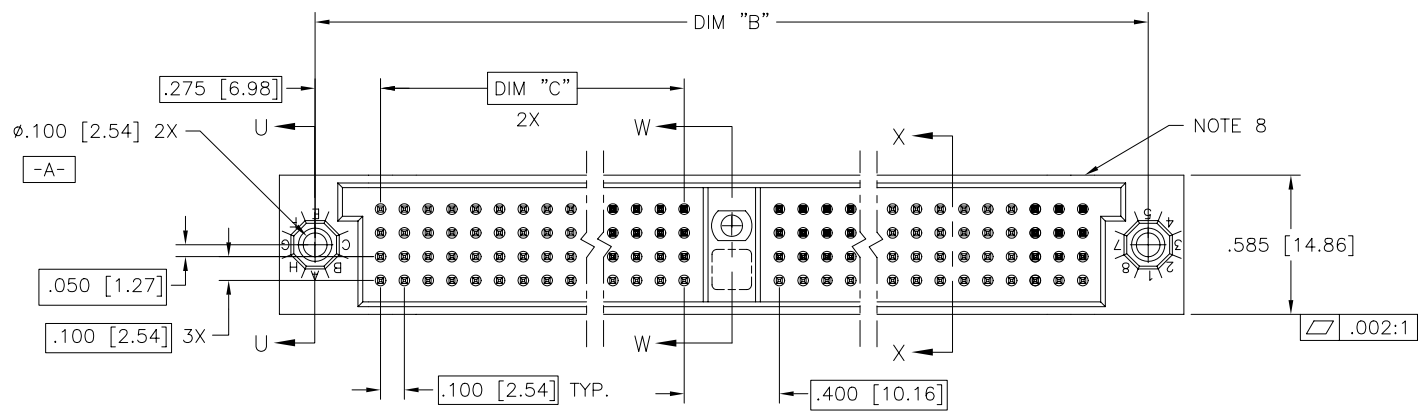


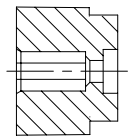
PRODUCT NUMBER
SEE NOTE 1



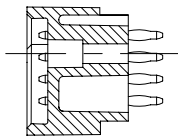
mat'l. code NOTE 3		surface ISO 1302 <input checked="" type="checkbox"/>		tolerance ISO 406 ISO 1101		projection 		product family HPC	
ltr	ecn	no	dr	date	tolerances unless otherwise specified		title		
A	v40701	PDP		3/31/94	angles	linear	.xx ±.01/.3 INCH/MM		
B	v40941	PDP		6/01/94			.xxx ±.005/.13		
C	v41072	GAH		7/05/94	$\sigma \pm 2'$.xxxx ±.0020/.051		
D	v50207	LSS	dr	2/17/95	P. PARSONS		scale 1:1		
E	v00276	JWS	enr	2/02/00	J. AFTON		FCJ		
F	M06-0261	AEA	chr	5/10/06	G. PETERS		50763 A3		
sheet index		revision	F	F	appd		S. CLARK 4/14/94		
sheet		1	2					type Product Customer Drawing	

FCJ
FCIconnect.com
Copyright FCI

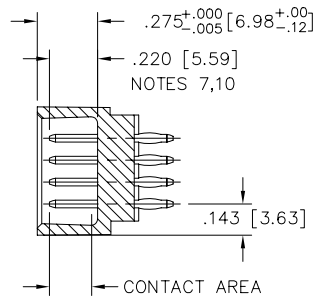
PRODUCT NUMBER	DIM.	LENGTH FORMULAS
SEE NOTE 1	DIM "A"	.100/2.54 x NO. OF COLUMNS + 1.050/26.67
	DIM "B"	.100/2.54 x NO. OF COLUMNS + .750/19.05
	DIM "C"	.100/2.54 x NO. OF COLUMNS DIVIDED BY 2 -.100/2.54



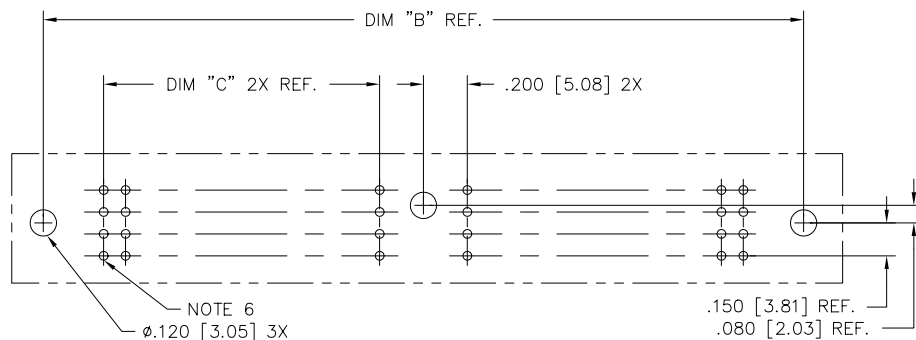
SECTION U-U



SECTION W-W



SECTION X-X



RECOMMENDED PCB LAYOUT
(ALL HOLES LOCATED ON .100/2.54 GRID
UNLESS OTHERWISE SPECIFIED)

NOTES:

- ① PRODUCT NUMBERING CODE:
50763 - X YYY Z
TAIL LENGTH(NOTE 5)
NO. OF POSITIONS(NOTE 2)
PLATING(NOTE 4)
BASE NUMBER
- ② THIS PRODUCT IS CONFIGURED IN SIZES OF 20 thru 122 COLUMNS IN INCREMENTS OF TWO.
i.e.: 20,22,24,26,.....118,120,122.
- ③ HOUSING MATERIAL: GLASS AND MINERAL FILLED HIGH TEMP. THERMOPLASTIC. FLAME RETARDANT PER UL94V-0. COLOR: BLACK.
PIN MATERIAL: PHOS BRONZE
- ④ PLATING OPTIONS:
A = 50u" Ni UNDER ALL WITH 30u" Au ON CONTACT AREA, SnPb ON PCB INTERFACE AND Au FLASH ON ALL OTHER AREAS.
B = 50u" Ni UNDER ALL WITH 30u" GXT ON CONTACT AREA, SnPb ON PCB INTERFACE AND Au FLASH ON ALL OTHER AREAS.
C = 50u" Ni UNDER ALL WITH 30u" Au ON CONTACT AREA, SnPb ON PCB INTERFACE, 30u" Au ON TAIL SIDE CONTACT AREA AND Au FLASH ON ALL OTHER AREAS.
D = 50u" Ni UNDER ALL WITH 30u" GXT ON CONTACT AREA, SnPb ON PCB INTERFACE, 30u" GXT ON TAIL SIDE CONTACT AREA AND Au FLASH ON ALL OTHER AREAS.
- ⑤ TAIL LENGTH OPTIONS:
FOR PLATING OPTIONS "A" & "B" ONLY:
A = .177/4.5
G = .250/6.35
FOR PLATING OPTIONS "C" & "D" ONLY:
C = .533/13.54
D = .733/18.62
- ⑥ ø.0453/1.151 DRILLED HOLE PLATED WITH .0003/.007 MIN. SnPb OVER .001/.03 to .003/.08 Cu. PLATING TO ACHIEVE A ø.040±.003/1.02±.08 HOLE.
- ⑦ TO ASSURE PROPER INSTALLATION: TOOLING, AS SPECIFIED IN INSTRUCTION MANUAL 155915-001 MUST BE USED. PIN MATING LENGTH WILL BE ±.002/.05 AFTER INSTALLATION.
- ⑧ MANUFACTURE'S NAME, PART NUMBER AND LOT CODE TO APPEAR ON THIS SURFACE PER BUS-12-108.
- ⑨ FOR DOCUMENTATION MENU, SEE BUS-01-057.
- ⑩ REFERENCE 50808 FOR F.M.L.B. AVAILABLE OPTIONS AND WORKSHEET.

mat'l. code		surface		tolerance		projection		product family	
-		ISO 1302 ✓		ISO 406		⊕		HPC	
ltr		ecn no		date		tolerances unless otherwise specified		title	
F						.xx ±.01/.3		4 ROW VERTICAL HEADER	
						.xxx ±.005/.13		MULTI-PLATED P.F. PINS, 1 G.P.	
						.xxxx ±.0020/.051		dwg no	
		dr		P. PARSONS		4/05/94		sheet 2 of 2 size	
		enr		J. AFTON		3/31/94		50763 A3	
		chr		G. PETERS		4/13/94		type	
		appd		S. CLARK		4/14/94		Product Customer Drawing	
sheet index		revision sheet							