

RED INDICATES ORIGINAL

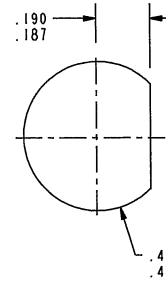
DASH NUMBER	CABLES ACCOMMODATED	A DIM	B HEX	ASSEMBLE PER
-201	M177176-00002			
-202	TWC-78-1			
-203	TWC-124-1A	1.164	.255	TAI-143
-204	10602, RAYCHEM			
-205	TWAC-78-1F2			
-206	782600130, RAYCHEM			
-207	83310 BELDEN	1.289	.344	TAI-167
-208	202-3927, MICRODOT	1.164	.255	TAI-143
-209	202-3942, MICRODOT			
-210	8451 BELDEN			TAI-167
-211	202-3934 MICRODOT			
-212	2524E0114, RAYCHEM			
-213	TWC-78-2	1.289	.344	TAI-144
-214	TWC-124-2			
-215	BL-982 TIMES			
-216	BL-1242 TIMES			
-217	GC875TM24H, GRUMMAN			
-218	EPD 22188B, RAYCHEM			
-219	252601114, RAYCHEM			
-220	GC875RR1, GRUMMAN	1.164	.255	TAI-143
-221	10614, RAYCHEM			
-222	10613, RAYCHEM			
-223	HMS2-1149, HUGHES			
-224	TWC-124-3			
-225	PS665PL, PRIME STOCK	1.289	.344	TAI-144

DASH NUMBER	CABLES ACCOMMODATED	A DIM	B HEX	ASSEMBLE PER
-301	GC875GC1, GRUMMAN			
-302	GC875GB1, GRUMMAN	1.164	.255	TAI-157
-303	5022E5111, RAYCHEM			
-303	7528A5314, RAYCHEM			
-304				
-305	M177177-00001			
-305	295-3804 MICRODOT			TAI-173
-306	TRC-50-2	1.289	.344	TAI-198
-307	M177134-00002			TAI-173
-308	TRC-75-1			TAI-173
-308	TRC-75-2			TAI-173
-309	TRC-50-1	1.164	.255	TAI-157

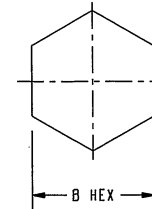
DATA CONTAINED IN THIS DOCUMENT IS PROPRIETARY OF TROMPETER ELECTRONICS, INC. AND SHALL NOT BE DISCLOSED, COPIED OR USED FOR PROCUREMENT OR MANUFACTURE WITHOUT EXPRESS WRITTEN PERMISSION.

REVISIONS

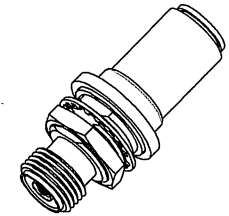
REV	DESCRIPTION	DATE	APPROVED
C	REVISED PER ECO 16608	4/17/08	RM



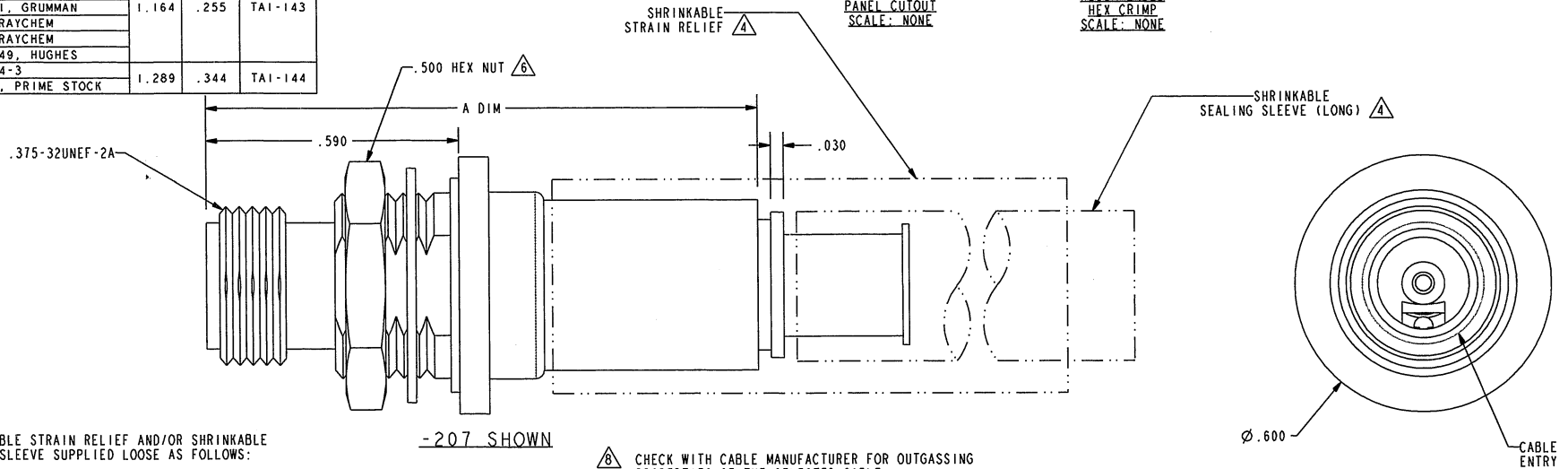
RECOMMENDED
PANEL CUTOUT
SCALE: NONE



RECOMMENDED
HEX CRIMP
SCALE: NONE



SCALE 1.5/1



4 SHRINKABLE STRAIN RELIEF AND/OR SHRINKABLE SEALING SLEEVE SUPPLIED LOOSE AS FOLLOWS:

- A) CABLE GROUPS -207, -210 AND -307:
1 SHRINKABLE STRAIN RELIEF (1.00" LONG)
1 SHRINKABLE SEALING SLEEVE (1.25" LONG)
- B) CABLE GROUPS -201 THROUGH -206, -208, -209, -217 THROUGH -223, -301, -302, 303 AND -309:
1 SHRINKABLE SEALING SLEEVE (1.25" LONG)
- C) CABLE GROUPS -211 THROUGH -216, -305, -306 AND -308
1 SHRINKABLE STRAIN RELIEF (1.75" LONG)

3. MAX PANEL THK .125
2. THREADED SUBMINIATURE CONCENTRIC TWINAX (4 PIECE ASSEMBLY) AND TRIAX (6 PIECE ASSEMBLY), FULL CRIMP NONINSULATED BULKHEAD MOUNT RECEPTACLE

1. FINISH: TFS-IU (NICKEL)

NOTES: UNLESS OTHERWISE SPECIFIED.

8 CHECK WITH CABLE MANUFACTURER FOR OUTGASSING PROPERTIES OF THE SELECTED CABLE

7. ALL MATERIALS MEET THE OUTGASSING REQUIREMENTS OF NASA SPECIFICATION SP-R-0022A AND TEI VACUUM READY SPECIFICATION TT-09

6 IF SAFETY WIRE TYPE REQUIRED ADD SUFFIX "S" TO PART NUMBER (SAFETY WIRE NUT SIZE WILL BE .564)

5. EXAMPLE OF COMPLETE PART NUMBER:

305-1559S -201
BASIC PART NUMBER CABLE GROUP DASH NUMBER

6 SUFFIX "S" FOR SAFETY WIRE

INTERPRET DRAWING PER MIL-STD-100. DIMENSIONS ARE IN INCHES AND INCLUDE FINISH THICKNESS UNLESS OTHERWISE SPECIFIED.		TOL: UNLESS SPECIFIED .XX ± .02 .XXX ± .010 ANGLE ± 1°		
DRW: N JOHNSON	DATE: 4-21-08	MATERIAL:	TITLE: BJ3159AC/BJ3159ACS VACUUM READY	
CHKD: RM	DATE: 6-17-08	FINISH:	SIZE: B	CAGE CODE: 14949
QUALITY:			DRAWING NO.: 305-1559	REV: C
APPROVED: RM	DATE: 4/17/08		SCALE: 4/1	DATE: 5-1-03
PROJECT FILE NO.: 305-1559		DO NOT SCALE DWG	SHEET: 1C	

NEXT ASSY