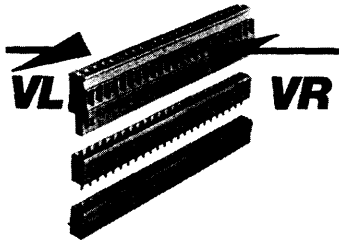


Vertical Pluggable terminal strips

Color: black - 5mm / light grey - 5.08mm
 rated cross section 2.5 mm² fine stranded
 rated voltage V~
 (VDE 0110b= Gr. C)

UR ratings: AWG No 22-12 300V 15 A
 CSA ratings: AWG No 22-12 300V 15 A



Description:

The 8113/8213 "Vertical Series Plug" are designed for vertical entry into both the vertical and horizontal sockets. Wire entry can be achieved via flat wall side (VR), or the curved wall side (VL). This is of special importance when used in restricted areas where a standard right angle configuration would be awkward or even impossible, and true vertical entry is necessary.

MATERIALS:

Insulating housing: polyamide, flame resistant
 UL 94 V-0 continuous temp. 100°C.
 Clamping body and clamping screws: copper alloy, nickel plated
 Solder pins and contact springs: tin plated bronze.

All metal parts are either recessed or enclosed in the insulating body, providing circuit protection and dead-front safety. The terminal block connectors are provided with captive wire protection, and the terminal screws are captive and secured against loosening.

spacing 5mm: standard color: black

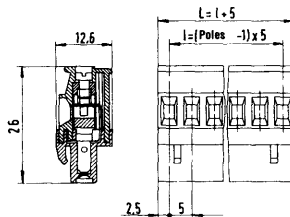
spacing 5.08mm: standard color: light grey

Accessories
 fixing bracket

Type 8113 B/..VR Type 8213 B/..VR

spacing 5.08 mm

Vertical Plug connector (VR)



screw connection
 Wire strip length 6 mm

poles	8113 B/..VR		spacing 5 mm
	part no	part no	
	marked	unmarked	
2	25.325.0253.1	25.325.3253.1	5
3	25.325.0353.1	25.325.3353.1	10
4	25.325.0453.1	25.325.3453.1	15
5	25.325.0553.1	25.325.3553.1	20
6	25.325.0653.1	25.325.3653.1	25
7	25.325.0753.1	25.325.3753.1	30
8	25.325.0853.1	25.325.3853.1	35
9	25.325.0953.1	25.325.3953.1	40
10	25.325.1053.1	25.325.4053.1	45
11	25.325.1153.1	25.325.4153.1	50
12	25.325.1253.1	25.325.4253.1	55
13	25.325.1353.1	25.325.4353.1	60
14	25.325.1453.1	25.325.4453.1	65
15	25.325.1553.1	25.325.4553.1	70
16	25.325.1653.1	25.325.4653.1	75
17	25.325.1753.1	25.325.4753.1	80
18	25.325.1853.1	25.325.4853.1	85
19	25.325.1953.1	25.325.4953.1	90
20	25.325.2053.1	25.325.5053.1	95
21	25.325.2153.1	25.325.5153.1	100
22	25.325.2253.1	25.325.5253.1	105
23	25.325.2353.1	25.325.5353.1	110
24	25.325.2453.1	25.325.5453.1	115

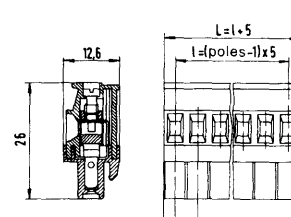
poles	8213 B/..VR		spacing 5.08 mm
	part no	part no	
	marked	unmarked	
2	25.345.0253.0	25.345.3253.0	5.08
3	25.345.0353.0	25.345.3353.0	10.16
4	25.345.0453.0	25.345.3453.0	15.24
5	25.345.0553.0	25.345.3553.0	20.32
6	25.345.0653.0	25.345.3653.0	25.40
7	25.345.0753.0	25.345.3753.0	30.48
8	25.345.0853.0	25.345.3853.0	35.56
9	25.345.0953.0	25.345.3953.0	40.64
10	25.345.1053.0	25.345.4053.0	45.72
11	25.345.1153.0	25.345.4153.0	50.80
12	25.345.1253.0	25.345.4253.0	55.88
13	25.345.1353.0	25.345.4353.0	60.96
14	25.345.1453.0	25.345.4453.0	66.04
15	25.345.1553.0	25.345.4553.0	71.12
16	25.345.1653.0	25.345.4653.0	76.20
17	25.345.1753.0	25.345.4753.0	81.28
18	25.345.1853.0	25.345.4853.0	86.36
19	25.345.1953.0	25.345.4953.0	91.44
20	25.345.2053.0	25.345.5053.0	96.52
21	25.345.2153.0	25.345.5153.0	101.60
22	25.345.2253.0	25.345.5253.0	106.60
23	25.345.2353.0	25.345.5353.0	111.76
24	25.345.2453.0	25.345.5453.0	116.84

Z5.523.2453.0

Type 8113 B/..VL Type 8213 B/..VL

spacing 5.08 mm

Vertical plug connector (VL)



screw connection
 Wire strip length 6 mm

poles	8113 B/..VL		spacing 5 mm
	part no	part no	
	marked	unmarked	
2	25.326.0253.1	25.326.3253.1	5
3	25.326.0353.1	25.326.3353.1	10
4	25.326.0453.1	25.326.3453.1	15
5	25.326.0553.1	25.326.3553.1	20
6	25.326.0653.1	25.326.3653.1	25
7	25.326.0753.1	25.326.3753.1	30
8	25.326.0853.1	25.326.3853.1	35
9	25.326.0953.1	25.326.3953.1	40
10	25.326.1053.1	25.326.4053.1	45
11	25.326.1153.1	25.326.4153.1	50
12	25.326.1253.1	25.326.4253.1	55
13	25.326.1353.1	25.326.4353.1	60
14	25.326.1453.1	25.326.4453.1	65
15	25.326.1553.1	25.326.4553.1	70
16	25.326.1653.1	25.326.4653.1	75
17	25.326.1753.1	25.326.4753.1	80
18	25.326.1853.1	25.326.4853.1	85
19	25.326.1953.1	25.326.4953.1	90
20	25.326.2053.1	25.326.5053.1	95
21	25.326.2153.1	25.326.5153.1	100
22	25.326.2253.1	25.326.5253.1	105
23	25.326.2353.1	25.326.5353.1	110
24	25.326.2453.1	25.326.5453.1	115

poles	8213 B/..VL		spacing 5.08 mm
	part no	part no	
	marked	unmarked	
2	25.346.0253.0	25.346.3253.0	5
3	25.346.0353.0	25.346.3353.0	10
4	25.346.0453.0	25.346.3453.0	15
5	25.346.0553.0	25.346.3553.0	20
6	25.346.0653.0	25.346.3653.0	25
7	25.346.0753.0	25.346.3753.0	30
8	25.346.0853.0	25.346.3853.0	35
9	25.346.0953.0	25.346.3953.0	40
10	25.346.1053.0	25.346.4053.0	45
11	25.346.1153.0	25.346.4153.0	50
12	25.346.1253.0	25.346.4253.0	55
13	25.346.1353.0	25.346.4353.0	60
14	25.346.1453.0	25.346.4453.0	65
15	25.346.1553.0	25.346.4553.0	70
16	25.346.1653.0	25.346.4653.0	75
17	25.346.1753.0	25.346.4753.0	80
18	25.346.1853.0	25.346.4853.0	85
19	25.346.1953.0	25.346.4953.0	90
20	25.346.2053.0	25.346.5053.0	95
21	25.346.2153.0	25.346.5153.0	100
22	25.346.2253.0	25.346.5253.0	105
23	25.346.2353.0	25.346.5353.0	110
24	25.346.2453.0	25.346.5453.0	115

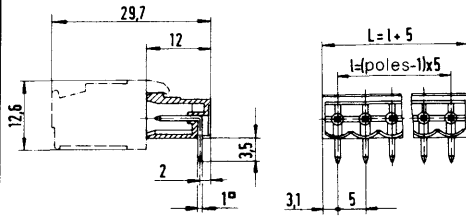
Z5.523.2453.0

See page 145 for the use of fixing brackets, end plates, and coding pieces.

Type 8113 S/..W Type 8213 S/..W

spacing 5/ 5.08 mm

Horizontal socket
plug-in parallel to PC board



cross section of pin 1 x 1
bore hole diameter 1.4

poles	part no	spacing 5 mm
	unmarked	
2	25.332.3253.1	5
3	25.332.3353.1	10
4	25.332.3453.1	15
5	25.332.3553.1	20
6	25.332.3653.1	25
7	25.332.3753.1	30
8	25.332.3853.1	35
9	25.332.3953.1	40
10	25.332.4053.1	45
11	25.332.4153.1	50
12	25.332.4253.1	55
13	25.332.4353.1	60
14	25.332.4453.1	65
15	25.332.4553.1	70
16	25.332.4653.1	75
17	25.332.4753.1	80
18	25.332.4853.1	85
19	25.332.4953.1	90
20	25.332.5053.1	95
21	25.332.5153.1	100
22	25.332.5253.1	105
23	25.332.5353.1	110
24	25.332.5453.1	115

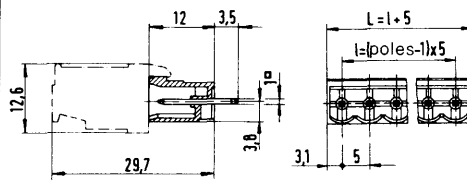
poles	part no	spacing 5.08 mm
	unmarked	
2	25.352.3253.0	5.08
3	25.352.3353.0	10.16
4	25.352.3453.0	15.24
5	25.352.3553.0	20.32
6	25.352.3653.0	25.40
7	25.352.3753.0	30.48
8	25.352.3853.0	35.56
9	25.352.3953.0	40.64
10	25.352.4053.0	45.72
11	25.352.4153.0	50.80
12	25.352.4253.0	55.88
13	25.352.4353.0	60.96
14	25.352.4453.0	66.04
15	25.352.4553.0	71.12
16	25.352.4653.0	76.20
17	25.352.4753.0	81.28
18	25.352.4853.0	86.36
19	25.352.4953.0	91.44
20	25.352.5053.0	96.52
21	25.352.5153.0	101.60
22	25.352.5253.0	106.68
23	25.352.5353.0	111.76
24	25.352.5453.0	116.84

Z5.523.2453.0

Type 8113 S/..G Type 8213 S/..G

spacing 5/ 5.08 mm

Vertical socket
Plug-in parallel to PC board



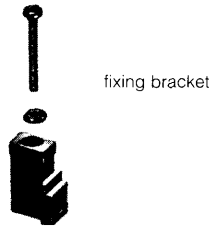
cross section 1 x 1
bore hole diameter 1.4

poles	part no	spacing 5 mm
	unmarked	
2	25.330.3253.1	5
3	25.330.3353.1	10
4	25.330.3453.1	15
5	25.330.3553.1	20
6	25.330.3653.1	25
7	25.330.3753.1	30
8	25.330.3853.1	35
9	25.330.3953.1	40
10	25.330.4053.1	45
11	25.330.4153.1	50
12	25.330.4253.1	55
13	25.330.4353.1	60
14	25.330.4453.1	65
15	25.330.4553.1	70
16	25.330.4653.1	75
17	25.330.4753.1	80
18	25.330.4853.1	85
19	25.330.4953.1	90
20	25.330.5053.1	95
21	25.330.5153.1	100
22	25.330.5253.1	105
23	25.330.5353.1	110
24	25.330.5453.1	115

poles	part no	spacing 5.08 mm
	unmarked	
2	25.350.3253.0	5.08
3	25.350.3353.0	10.16
4	25.350.3453.0	15.24
5	25.350.3553.0	20.32
6	25.350.3653.0	25.40
7	25.350.3753.0	30.48
8	25.350.3853.0	35.56
9	25.350.3953.0	40.64
10	25.350.4053.0	45.72
11	25.350.4153.0	50.80
12	25.350.4253.0	55.88
13	25.350.4353.0	60.96
14	25.350.4453.0	66.04
15	25.350.4553.0	71.12
16	25.350.4653.0	76.20
17	25.350.4753.0	81.28
18	25.350.4853.0	86.36
19	25.350.4953.0	91.44
20	25.350.5053.0	96.52
21	25.350.5153.0	101.60
22	25.350.5253.0	106.68
23	25.350.5353.0	111.76
24	25.350.5453.0	116.84

Z5.523.2453.0

Accessories 8113-8413



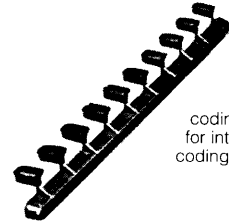
fixing bracket

Z5.523.2453.0



end plate for double deck pin strip

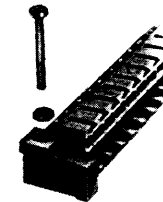
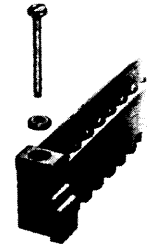
07.310.9853.0



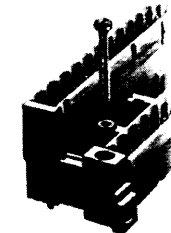
coding strips for integrated coding system

05.561.0053.0
05.561.9153.0

for sockets for plugs



mounting of fixing bracket for pin strips



mounting of fixing bracket with end plate for double deck pin strips

