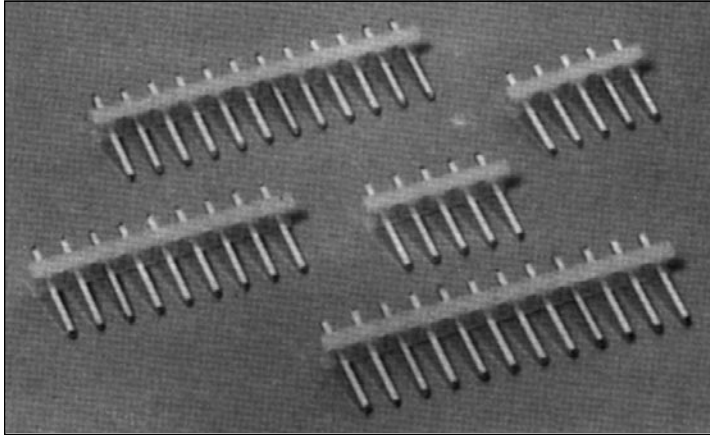


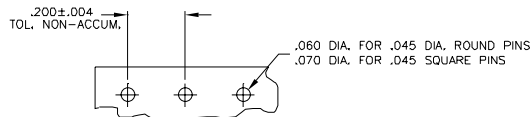
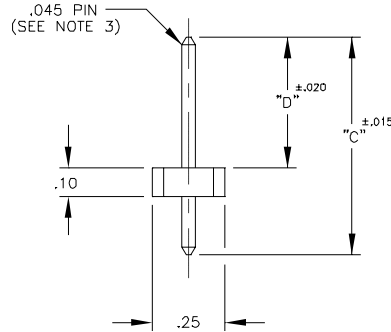
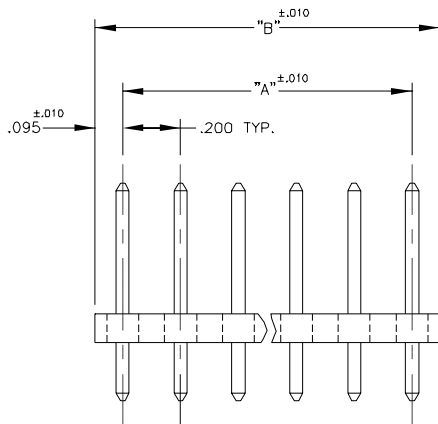
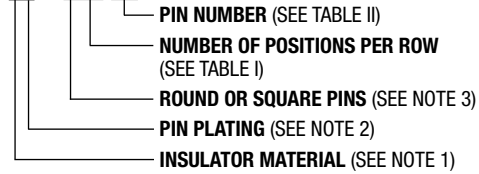
.200" (5.08mm) Single Row Through Hole, Vertical Headers



2100 SERIES

PART NUMBER LEGEND

21XX-1-XXX-XX



RECOMMENDED P.C. BOARD LAYOUT

NOTES

- INSULATOR MATERIAL:
 210X-1-XXX-XX: NYLON 6/6, UL 94V-2
 COLOR: NATURAL
 216X-1-XXX-XX: NYLON 6/6, UL 94V-0
 COLOR: NATURAL

 PIN MATERIAL: 70/30 BRASS
- PIN FINISH:
 21X0-1-XXX-XX: BRITE TIN OVER NICKEL PLATE.
 21X2-1-XXX-XX: .000015 GOLD OVER NICKEL PLATE.
- .045 PIN OPTIONS:
 21XX-1-1XX-XX: .045 SQUARE PIN
 21XX-1-2XX-XX: .045 DIA. ROUND PIN

PART NUMBER	DIM. C	DIM. D
21XX-1-XXX-01	.750	.450
↑↑↑↑-02	.750	.480
↑↑↑↑-03	.812	.560
↑↑↑↑-04	.937	.640
↑↑↑↑-05	.937	.560
↑↑↑↑-06	1.000	.690
↑↑↑↑-07	1.187	.890
↑↑↑↑-08	1.187	.940
↑↑↑↑-09	1.187	.530
↑↑↑↑-10	1.250	.450
↑↑↑↑-11	1.375	1.080
↑↑↑↑-12	1.375	.620
↑↑↑↑-13	1.562	.750
↑↑↑↑-14	1.562	1.280
↑↑↑↑-15	1.562	.620
↑↑↑↑-16	1.750	.720
↑↑↑↑-17	.860	.450
↑↑↑↑-18	—	—
↑↑↑↑-19	1.290	1.180
↑↑↑↑-20	1.000	.445
↑↑↑↑-21	.937	.625
↑↑↑↑-22	.750	.437
↑↑↑↑-23	1.812	.950
↑↑↑↑-24	1.750	1.250
↑↑↑↑-25	—	—
↑↑↑↑-26	.937	.530
↑↑↑↑-27	1.400	1.085
↑↑↑↑-28	1.125	.825
↑↑↑↑-29	1.290	1.055
↑↑↑↑-30	1.031	.812
↑↑↑↑-31	1.250	.940
↑↑↑↑-32	.937	.600
↑↑↑↑-33	1.250	1.000

PART NUMBER	DIM. C	DIM. D
21XX-1-XXX-34	.937	.375
↑↑↑↑-35	—	—
↑↑↑↑-36	1.670	.550
↑↑↑↑-37	—	—
↑↑↑↑-38	—	—
↑↑↑↑-39	.812	.480
↑↑↑↑-40	.750	.500
↑↑↑↑-41	1.200	.450
↑↑↑↑-42	.812	.530
↑↑↑↑-43	.660	.425
↑↑↑↑-44	—	—
↑↑↑↑-45	—	—
↑↑↑↑-46	1.750	1.500
↑↑↑↑-47	1.560	1.310
↑↑↑↑-48	1.031	.450
↑↑↑↑-49	2.000	1.750
↑↑↑↑-50	—	—
↑↑↑↑-51	1.812	1.562
↑↑↑↑-52	—	—
↑↑↑↑-53	1.125	.450
↑↑↑↑-54	.750	.390
↑↑↑↑-55	—	—
↑↑↑↑-56	1.125	.900
↑↑↑↑-57	1.400	.637
↑↑↑↑-58	1.250	.715
↑↑↑↑-59	—	—
↑↑↑↑-60	1.312	1.012
↑↑↑↑-61	1.290	.984
↑↑↑↑-62	1.562	1.280
↑↑↑↑-63	1.031	.770
↑↑↑↑-64	1.670	1.410
↑↑↑↑-65	1.290	1.130
↑↑↑↑-66	1.312 ±.010	.084/.100

PART NUMBER	NO. OF POS.	DIM. A	DIM. B
21XX-1-X02-XX	2	.200	.390
↑↑-X03	3	.400	.590
↑↑-X04	4	.600	.790
↑↑-X05	5	.800	.990
↑↑-X06	6	1.000	1.190
↑↑-X07	7	1.200	1.390
↑↑-X08	8	1.400	1.590
↑↑-X09	9	1.600	1.790
↑↑-X10	10	1.800	1.990
↑↑-X11	11	2.000	2.190
↑↑-X12	12	2.200	2.390
↑↑-X13	13	2.400	2.590
↑↑-X14	14	2.600	2.790
↑↑-X15	15	2.800	2.990
↑↑-X16	16	3.000	3.190
↑↑-X17	17	3.200	3.390
↑↑-X18	18	3.400	3.590
↑↑-X19	19	3.600	3.790
↑↑-X20-XX	20	3.800	3.990

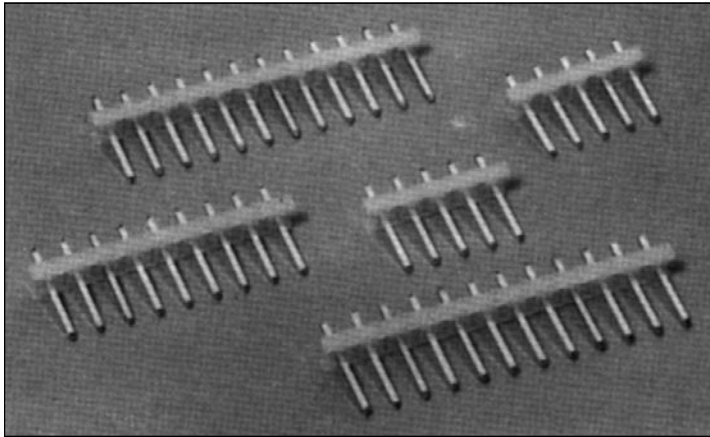


North and South America:
Methode Electronics, Inc. Connector Products
 1700 Hicks Road • Rolling Meadows, IL 60008 USA
 847-392-3500 • Toll Free: 800-323-6864 • Fax: 847-392-9404
 Email: info@methode.com • Web: www.methode.com/connector/index.html

Europe:
Methode Electronics Ireland, Ltd.
 Unit H, Crossagalla Business Park, Ballysion Rd. • Limerick, Ireland
 +353 (0) 61 401222 • Fax: +353 (0) 61 401942
 Email: info@methode.ie • Web: ireland.methode.com/main.html

Far East:
Methode Electronics Far East, Pte. Ltd.
 1 Tuas Lane, Jurong Town • Singapore 638610
 65-68615444 • Fax: 65-68614777
 Email: sales@methode.com.sg • Web: www.methode.com/mefe/index.html

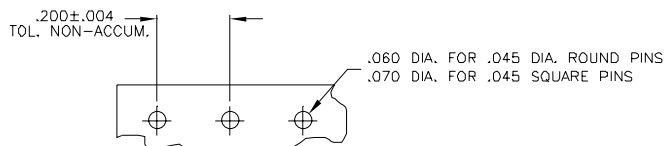
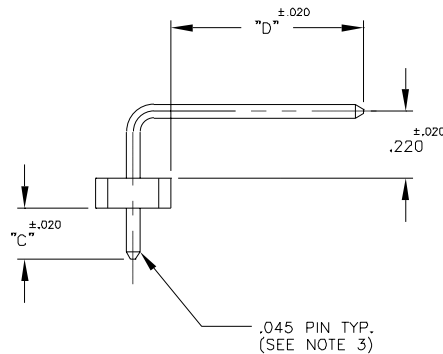
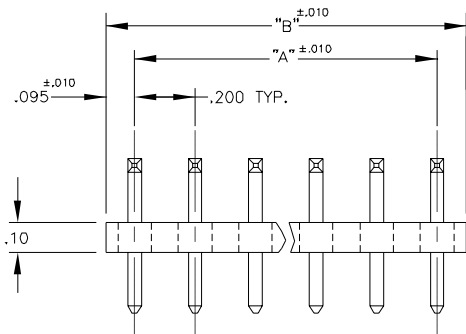
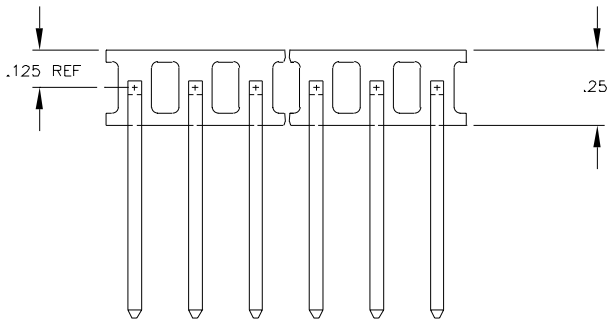
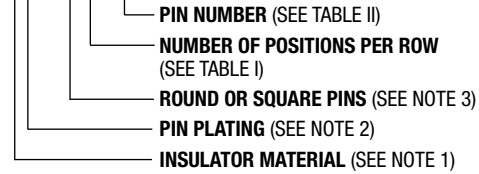
.200" (5.08mm) Single Row Through Hole, Right Angle Headers



2100 SERIES

PART NUMBER LEGEND

21XX-3-XXX-XX



RECOMMENDED P.C. BOARD LAYOUT

NOTES

- 1) INSULATOR MATERIAL:
 - 210X-3-XXX-XX: NYLON 6/6, UL 94V-2
COLOR: NATURAL
 - 216X-3-XXX-XX: NYLON 6/6, UL 94V-0
COLOR: NATURAL
- PIN MATERIAL: 70/30 BRASS
- 2) PIN FINISH:
 - 21X0-3-XXX-XX: BRITE TIN OVER NICKEL PLATE.
 - 21X2-3-XXX-XX: .000015 GOLD OVER NICKEL PLATE.
- 3) .045 PIN OPTIONS:
 - 21XX-3-1XX-XX: .045 SQUARE PIN
 - 21XX-3-2XX-XX: .045 DIA. ROUND PIN

PART NUMBER	NO. OF POS.	DIM "A"	DIM "B"
21XX-3-X02-XX	2	.200	.390
↑ -103	3	.400	.590
↑ -104	4	.600	.790
↑ -105	5	.800	.990
↑ -106	6	1.000	1.190
↑ -107	7	1.200	1.390
↑ -108	8	1.400	1.590
↑ -109	9	1.600	1.790
↑ -110	10	1.800	1.990
↑ -111	11	2.000	2.190
↑ -112	12	2.200	2.390
↑ -113	13	2.400	2.590
↑ -114	14	2.600	2.790
↑ -115	15	2.800	2.990
↑ -116	16	3.000	3.190
↑ -117	17	3.200	3.390
↑ -118	18	3.400	3.590
↑ -119	19	3.600	3.790
21XX-3-X20-XX	20	3.800	3.990

PART NUMBER	DIM "C"	DIM "D"
21XX-3-XXX-01	.169	.636
21XX-3-XXX-17	.142	.466



North and South America:
Methode Electronics, Inc. Connector Products
 1700 Hicks Road • Rolling Meadows, IL 60008 USA
 847-392-3500 • Toll Free: 800-323-6864 • Fax: 847-392-9404
 Email: info@methode.com • Web: www.methode.com/connector/index.html

Europe:
Methode Electronics Ireland, Ltd.
 Unit H, Crossagalla Business Park, Ballysimon Rd. • Limerick, Ireland
 +353 (0) 61 401222 • Fax: +353 (0) 61 401942
 Email: info@methode.ie • Web: ireland.methode.com/main.html

Far East:
Methode Electronics Far East, Pte. Ltd.
 1 Tuas Lane, Jurong Town • Singapore 638610
 65-68615444 • Fax: 65-68614777
 Email: sales@methode.com.sg • Web: www.methode.com/mefe/index.html