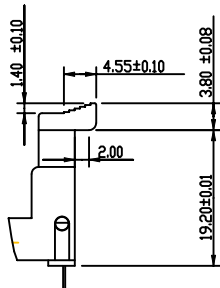
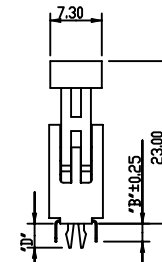
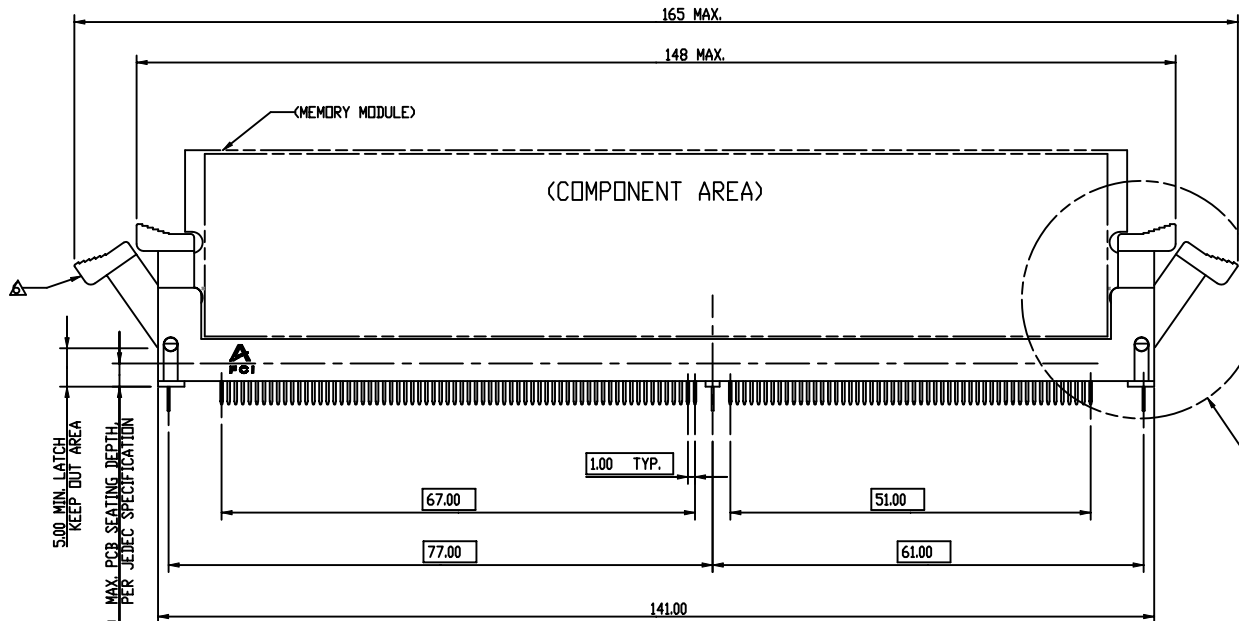
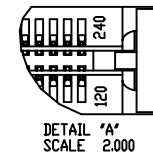
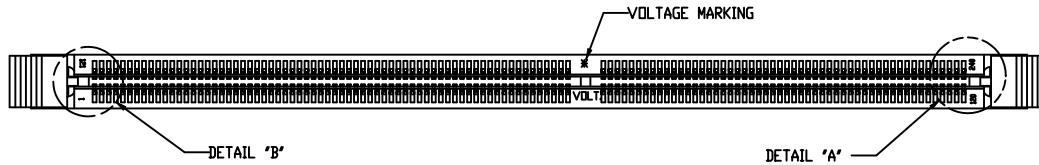
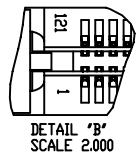


Tous droits strictement reserves. Reproduction ou communication a des tiers interdite sous quelque forme que ce soit sans autorisation écrite du propriétaire. Propriete de c FCI. Droits de reproduction FCI.



All rights strictly reserved. Reproduction or issue to third parties in any form whatever is not permitted without written authority from the proprietor. Property of FCI. Copyright FCI.



SCALE 1.000

| tolerances unless otherwise specified |      |       |
|---------------------------------------|------|-------|
| linear                                | .X   | ±0.38 |
|                                       | .XX  | ±0.25 |
|                                       | .XXX | ±0.13 |
| angles                                | X°   | ±2°   |

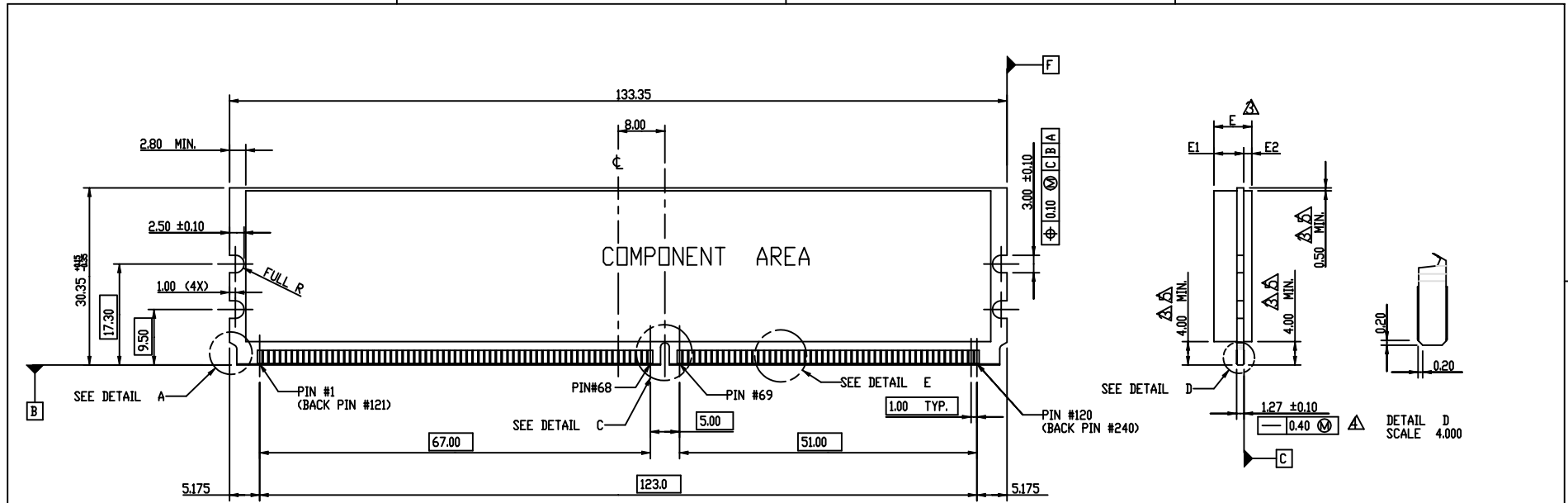
|                           |  |                        |  |                  |  |              |  |
|---------------------------|--|------------------------|--|------------------|--|--------------|--|
| <b>FCI</b>                |  | www.fciconnect.com     |  | tolerance        |  | projection   |  |
| Dr WENDY CHEN 12/24/03    |  | Product family: DDR II |  | size A4          |  | Scale 0.500  |  |
| Eng RICHARD CHIU 12/24/03 |  | Spec ref               |  | ECN T05-0002     |  |              |  |
| Chr PAUL WANG 12/24/03    |  | Material               |  |                  |  |              |  |
| Appr JOSEPH HSIA 12/24/03 |  |                        |  |                  |  |              |  |
| title DDR II 240P, FBD    |  |                        |  | dwg no 10037402  |  | Rev. F       |  |
| catalog no                |  |                        |  | CUSTOMER DRAWING |  | sheet 1 of 4 |  |

| rev | ecn no   | dr | date     |
|-----|----------|----|----------|
| A   | T04-0204 | WL | 05/12/04 |
| B   | T04-0249 | WL | 06/09/04 |
| C   | T04-0322 | RC | 07/15/04 |
| D   | T04-0406 | RC | 11/10/04 |
| E   | T04-0423 | RC | 12/01/04 |
| F   | T05-0002 | RC | 01/04/05 |
| -   | -        | -  | -        |

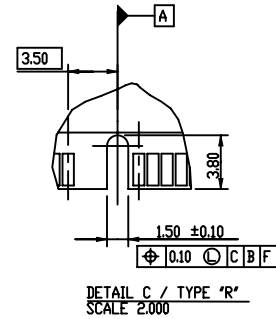
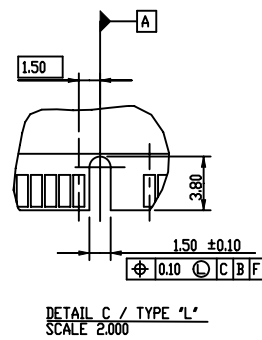
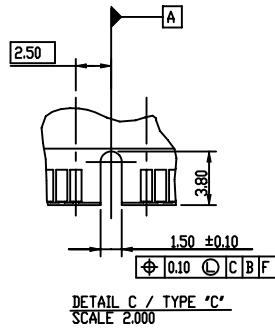
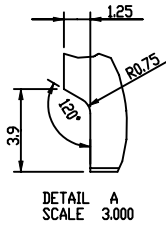
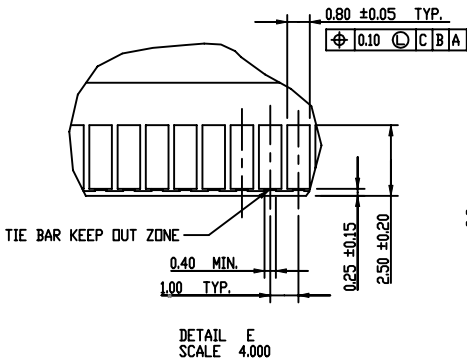
Tous droits strictement réservés. Reproduction ou communication à des tiers interdite sous quelque forme que ce soit sans autorisation écrite du propriétaire. Propriété de c FCI. Droits de reproduction FCI.



All rights strictly reserved. Reproduction or issue to third parties in any form whatever is not permitted without written authority from the proprietor. Property of FCI. Copyright FCI.



SCALE 1.000  
RECOMMENDED MODULE LAYOUT ( PER JEDEC MO-256 )



| tolerances unless otherwise specified |      |       |
|---------------------------------------|------|-------|
| linear                                | .X   | ±0.38 |
|                                       | .XX  | ±0.15 |
|                                       | .XXX | ±0.13 |
| angles                                | X°   | ±2°   |

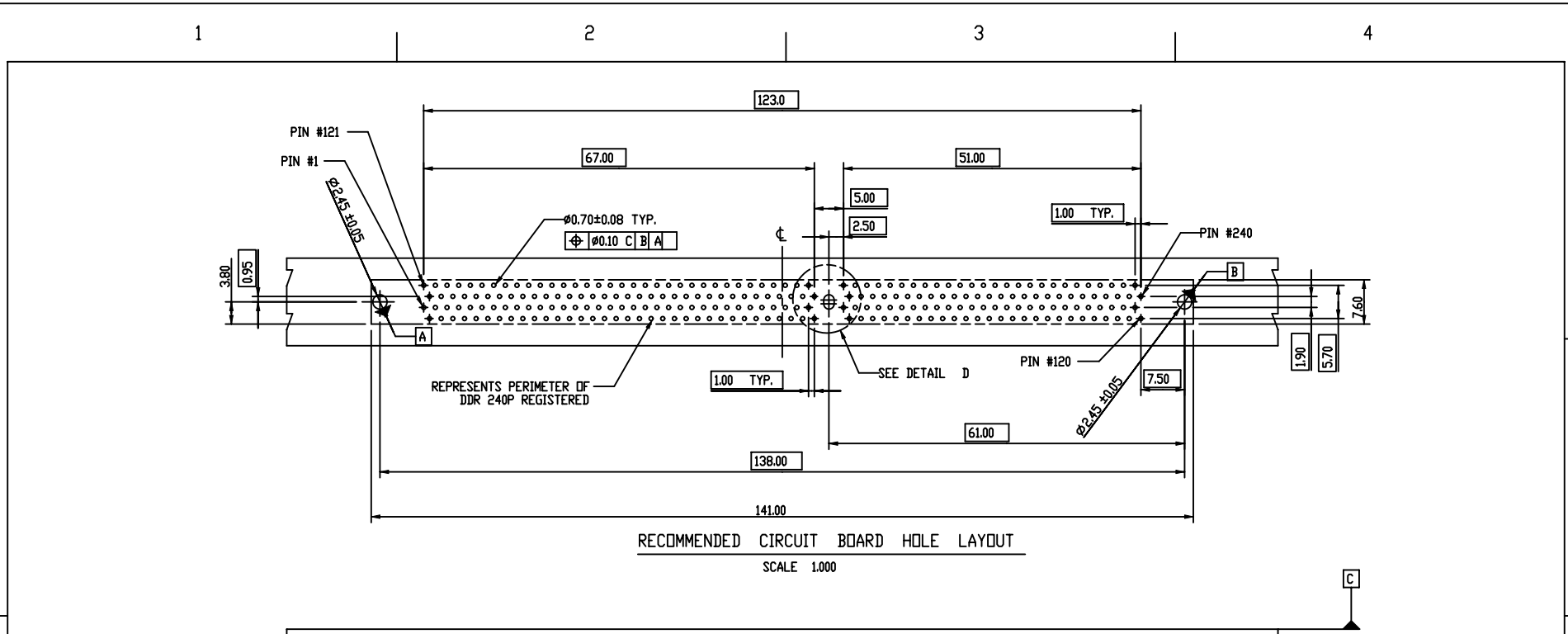
| SUB KEY POS. #1 | DESCRIPTION | TYPE 1  |         |           | TYPE 2  |         |           |
|-----------------|-------------|---------|---------|-----------|---------|---------|-----------|
|                 |             | DIM. E1 | DIM. E2 | DIM. E    | DIM. E1 | DIM. E2 | DIM. E    |
| TYPE R          | X.X VOLTAGE | 5.20    | 1.40    | 6.60 MAX. | 5.20    | 3.00    | 8.20 MAX. |
| TYPE L          | 2.5 VOLTAGE | 5.20    | 1.40    | 6.60 MAX. | 5.20    | 3.00    | 8.20 MAX. |
| TYPE C          | 1.8 VOLTAGE | 5.20    | 1.40    | 6.60 MAX. | 5.20    | 3.00    | 8.20 MAX. |

|                 |              |                    |                 |           |                  |      |              |
|-----------------|--------------|--------------------|-----------------|-----------|------------------|------|--------------|
| <b>A</b><br>FCI |              | www.fciconnect.com |                 | tolerance | projection       | size | Scale        |
| Dr              | WENDY CHEN   | 12/24/03           | Product family: | DDR II    |                  | A4   | 5.000        |
| Eng             | RICHARD CHIU | 12/24/03           | Spec ref        |           |                  |      |              |
| Chr             | PAUL WANG    | 12/24/03           | Material        |           | ECN T05-0002     |      |              |
| Appr            | JOSEPH HSIA  | 12/24/03           |                 |           |                  |      |              |
| title           |              | DDR II 240P, FBD   |                 |           | dwg no           |      | 10037402     |
| catalog no      |              |                    |                 |           | CUSTOMER DRAWING |      | sheet 2 of 4 |

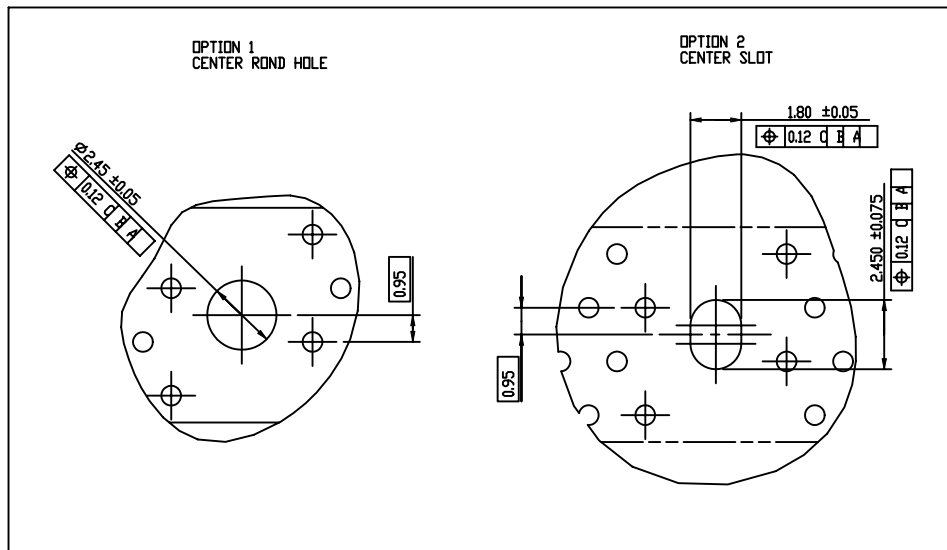
Tous droits strictement reserves. Reproduction ou communication a des tiers interdite sous quelque forme que ce soit sans autorisation écrite du propriétaire. Propriete de c FCI. Droits de reproduction FCI.



All rights strictly reserved. Reproduction or issue to third parties in any form whatever is not permitted without written authority from the proprietor. Property of FCI. Copyright FCI.



DETAIL D  
SCALE 4.000



| tolerances unless otherwise specified |      |       |
|---------------------------------------|------|-------|
| linear                                | .X   | ±0.38 |
|                                       | .XX  | ±0.25 |
|                                       | .XXX | ±0.13 |
| angles                                | X°   | ±2°   |

|                               |                       |                        |              |       |
|-------------------------------|-----------------------|------------------------|--------------|-------|
| <b>FCI</b> www.fciconnect.com |                       | tolerance              | projection   | mm    |
| Dr                            | WENDY CHEN 12/24/03   | Product family: DDR II | size         | A4    |
| Eng                           | RICHARD CHIU 12/24/03 | Spec ref               | Scale        | 0.500 |
| Chr                           | PAUL WANG 12/24/03    | Material               | ECN T05-0002 |       |
| Appr                          | JOSEPH HSIA 12/24/03  |                        |              |       |
| title                         |                       | DDR II 240P, FBD       |              |       |
| catalog no                    |                       | dwg no                 |              | Rev.  |
|                               |                       | CUSTOMER DRAWING       |              | F     |
|                               |                       | sheet 3 of 4           |              |       |

Tous droits strictement reserves. Reproduction ou communication a des tiers interdite sous quelque forme que ce soit sans autorisation écrite du propriétaire. Propriete de c. FCI. Droits de reproduction FCI.



All rights strictly reserved. Reproduction or issue to third parties in any form whatever is not permitted without written authority from the proprietor. Property of FCI. Copyright FCI.

1

2

3

4

10037402- □ □ □ □ □

STYLE : MECHANICAL KEYING

- 1 : 1.8 VOLT. W/TYPE 'C'
- 2 : 2.5 VOLT. W/TYPE 'L'
- 3 : XX VOLT. W/TYPE 'R'

METAL CLIP

- 1 : WITH METAL CLIP + DIM.'D'=3.05
- 2 : WITH METAL CLIP + DIM.'D'=3.56
- 3 : WITH METAL CLIP + DIM.'D'=3.43

TAIL LENGTH

| CODE | DIM. 'B' | PCB THICKNESS    |
|------|----------|------------------|
| 0    | 2.54     | 1.47 mm (0.058") |
| 1    | 2.67     | 1.60 mm (0.063") |
| 2    | 3.18     | 2.36 mm (0.093") |
| 3    | 4.00     | 3.18 mm (0.125") |

NOTE:

1. MATERIAL:  
HOUSING: HIGH PERFORMANCE RESINS, GLASS FILLED UL94V-0 RATED.  
EJECTOR: HIGH PERFORMANCE RESINS, GLASS FILLED UL 94V-0 RATED.  
TERMINAL : COPPER ALLOY.  
METAL CLIP: COPPER ALLOY.
2. PRODUCT SPECIFICATION: GS-12-300.
- △ DIMENSIONS APPLICABLE WHEN COMPONENTS MOUNTED ON ONE OR BOTH SIDES.
- △ CARD THICKNESS APPLIES ACROSS TABS AND INCLUDES PLATING AND/OR MEALIZATION STRAIGHTNESS CALLOUT APPLIES TO ZONE DEFINED BY THE 4.00 CONTACT AREA DIMENSION FOR THE ENTIRE LENGTH OF 133.35.
- △ BOARD OF COMPONENT AREA.
- △ LATCH DESIGN INCLUDES COMPLEMENTARY FEATURE TO ACCOMMODATE MODULE END NOTCHES AS DEFINED IN DETAIL A OF P.2 AND AS SPECIFIED IN MD-256.
7. THIS PRODUCT MEETS EUROPEAN UNION DIRECTIVES AND OTHER COUNTRY REGULATIONS AS DESCRIBED IN GS-22-008.
8. THE HOUSING WILL WITHSTAND EXPOSURE TO 260°C PEAK TEMP. FOR 10 SECONDS IN A WAVE SOLDER APPLICATION
9. 10037402-XXXX(X)LF SERIES ARE FOR LEAD-FREE OPTIONS.

PLATING

| CODE | CONTACT                    | SOLDERTAIL                     | UNDERPLATE                             |
|------|----------------------------|--------------------------------|--|
| 2    | 15 u"(0.38um)<br>MIN. GOLD | 100u"(2.54um)<br>MIN. TIN/LEAD | 50u"(1.27um)<br>MIN. NICKEL<br>OVERALL |
| 3    | 30u"(0.76um)<br>MIN. GOLD  |                                |  |
| 4    | 3u"(0.076um)<br>MIN. GOLD  | 100u"(2.54um)<br>MIN. 100% TIN | 50u"(1.27um)<br>MIN. NICKEL<br>OVERALL |
| 7LF  | 15u"(0.38um)<br>MIN. GOLD  |                                |  |
| 8LF  | 30u"(0.76um)<br>MIN. GOLD  | 100u"(2.54um)<br>MIN. 100% TIN | 90u"(2.29um)<br>MIN. NICKEL<br>OVERALL |
| 9LF  | 3u"(0.076um)<br>MIN. GOLD  |                                |  |
| 21   | 15 u"(0.38um)<br>MIN. GOLD | 100u"(2.54um)<br>MIN. TIN/LEAD | 90u"(2.29um)<br>MIN. NICKEL<br>OVERALL |
| 31   | 30 u"(0.76um)<br>MIN. GOLD |                                |  |
| 41   | 3 u"(0.076um)<br>MIN. GOLD | 100u"(2.54um)<br>MIN. 100% TIN | 90u"(2.29um)<br>MIN. NICKEL<br>OVERALL |
| 71LF | 15 u"(0.38um)<br>MIN. GOLD |                                |  |
| 81LF | 30 u"(0.76um)<br>MIN. GOLD | 100u"(2.54um)<br>MIN. 100% TIN | 90u"(2.29um)<br>MIN. NICKEL<br>OVERALL |
| 91LF | 3 u"(0.076um)<br>MIN. GOLD |                                |  |

COLOR OF HOUSING AND EJECTOR

- 0 : BLACK HOUSING + IVORY EJECTOR
- 1 : BLUE HOUSING + IVORY EJECTOR
- 2 : BLACK HOUSING + BLACK EJECTOR

|            |              |                    |                         |                                     |                  |            |              |          |      |
|------------|--------------|--------------------|-------------------------|-------------------------------------|------------------|------------|--------------|----------|------|
|            |              | www.fciconnect.com |                         | <input checked="" type="checkbox"/> | tolerance        | projection | mm           |          |      |
| Dr         | WENDY CHEN   | 12/24/03           | Product family : DDR II |                                     | size             | A4         | Scale        |          |      |
| Eng        | RICHARD CHIU | 12/24/03           | Spec ref                |                                     | 0.500            |            |              |          |      |
| Chr        | PAUL WANG    | 12/24/03           | Material                |                                     | ECN T05-0002     |            |              |          |      |
| Appr       | JOSEPH HSIA  | 12/24/03           |                         |                                     |                  |            |              |          |      |
| title      |              |                    |                         |                                     | DDR II 240P, FBD |            | dwg no       | 10037402 | Rev. |
| catalog no |              |                    |                         |                                     | CUSTOMER DRAWING |            | sheet 4 of 4 |          | F    |

1

2

PDM: Rev:F

STATUS:Released

4

Printed: Jan 07, 2005