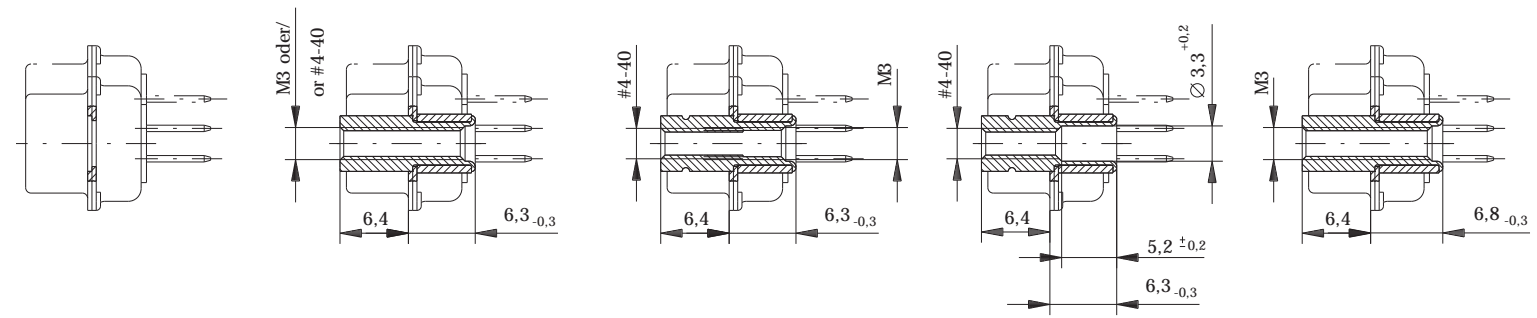


Schnitt A-A / cross section A-A



Zubehör: Gewindebolzen/Hülse  
accessories: threaded bolt/sleeve

a : Anschlußlänge beliebig von 3 bis 6 mm; Toleranz ±0.3  
a : terminal length from 3 to 6 mm; tolerance ±0.3

9	30.8	16.8	25.0	8.3	12.5	10.8	5.8	19.3	10.8	0.8		
15	39.1	25.1	33.3	8.3	12.5	10.8	5.8	27.5	10.8	0.8		
25	53.0	38.9	47.0	8.3	12.5	10.8	5.8	41.3	10.8	0.8		
37	69.3	55.3	63.5	8.3	12.5	10.8	5.8	57.7	10.8	0.8		
50	67.0	52.7	61.1	11.0	15.4	10.8	5.8	55.3	13.6	0.9		
Polzahl/ No. of contacts	A ±0.3	B +0.2	C ±0.2	D +0.2	E ±0.3	F ±0.2	G +0.3	H ±0.3	J ±0.2	L ±0.1		

Fehlende Masse und Angaben siehe DIN 41652 / Missing information and dimensions according to DIN 41652  
Sonstige Angaben siehe Fertigungsunterlagen / Additional indications please see the production documentation

Information:	Tolerances 	Scale 2:1
All rights reserved. Only for information. To insure that this is the latest version of this drawing, please contact one of the ERNI companies before using.	Subject to modification without prior notice. Drawing will not be updated.	Designation <b>TMC-P 9 bis 50-TL-3.0 bis 6.0</b> <b>TMC-P 9 bis 50-TL-3.0 to 6.0</b>
b	05.09.2000	Elektroapparate GmbH D-73099 ADELBERG
Index	Date	M:00022919.SZN
		<b>054948</b>
		TMCP

Ident-Nr. / Part No. : Refer to table on page 2

Polzahl / No. of contacts : Refer to table on page 2

Anschlußart / Terminal Type : Straight soldering

Anschlußlänge / Terminal Length : 6.0 mm

Bauart / Type : 7

Anforderungsstufe / Class : 207=0.8µm (30 µin) Au CONTACT, TIN/LEAD TERMINAL

Aufdruck / Logo : ERNI

Zubehör / Accessory : Refer to table on page 2

Sonderausführung / Special : Refer to table on page 2

Consider protection memo from DIN 54

## Ordering Information

### D-Sub Connector Solder Vertical Male Assembly Height 6.3 mm

Number of Pins

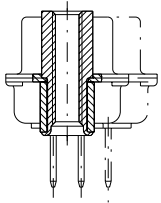
9

15

25

37

50



Accessory Mating Side: Sleeve

Accessory Termination Side: Threaded bolt M3

023146

023147

023148

023149

023150

Accessory Mating Side: Sleeve

Accessory Termination Side: Threaded bolt #4-40

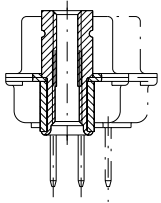
023151

023152

023153

023154

023155



Accessory Mating Side: Sleeve

Accessory Termination Side: Threaded bolt M3 / #4-40

023156

023157

023158

023159

023160



## Connectors | TMC | Solder Vertical Male Assembly Height 6.3 mm

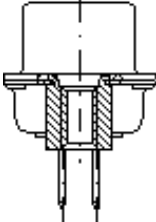
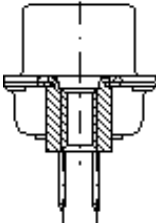
or 6-Digit Part Number:

Available Pin-Configurations: [9](#) | [15](#) | [25](#) | [37](#) | [50](#) |



Image does not represent actual Part Number.

ERNI produces a solder D-Sub connector with vertical or right angle termination. The connectors are available in 9, 15, 25, 37 and 50 pin configurations, and are designed according to DIN 41652 and IEC 807- 3 specifications. Available with a metal shell and pre-installed metal hardware, ERNI's solder D-Sub connector offers excellent low resistance grounding.

<p><b>PART NUMBER 023136</b></p> <p><b>Drawings:</b> <a href="#">JPG (view) N.A.</a> <a href="#">DXF N.A. PDF (51 KB)</a></p> <p><b>Catalog:</b> <a href="#">PDF N.A.</a></p> <p><b>Request: Information</b></p>	<p><b>Accessory Terminal Side:</b> Rivet nut M3</p> 	<p><b>023136</b></p> <p><b>Gender:</b> Male</p> <p><b>Pins:</b> 9</p> <p><b>Termination:</b> Solder</p> <p><b>Terminal Length:</b> 6 mm</p> <p><b>Assembly Height:</b> 6.3 mm</p> <p><b>Class:</b> 2</p>
<p><b>PART NUMBER 023141</b></p> <p><b>Drawings:</b> <a href="#">JPG (view) N.A.</a> <a href="#">DXF N.A. PDF (51 KB)</a></p> <p><b>Catalog:</b> <a href="#">PDF N.A.</a></p> <p><b>Request: Information</b></p>	<p><b>Accessory Terminal Side:</b> Rivet nut #4-40</p> 	<p><b>023141</b></p> <p><b>Gender:</b> Male</p> <p><b>Pins:</b> 9</p> <p><b>Termination:</b> Solder</p> <p><b>Terminal Length:</b> 6 mm</p> <p><b>Assembly Height:</b> 6.3 mm</p>

---

---

**PART NUMBER 023146**

**Drawings:** JPG  
(view) N.A.  
DXF N.A. **PDF** (54 KB)

**Catalog:** PDF N.A.

**Request: Information**

---

---

**PART NUMBER 023151**

**Drawings:** JPG  
(view) N.A.  
DXF N.A. **PDF** (54 KB)

**Catalog:** PDF N.A.

**Request: Information**

---

---

**PART NUMBER 023156**

**Drawings:** JPG  
(view) N.A.  
DXF N.A. **PDF** (54 KB)

**Catalog:** PDF N.A.

**Request: Information**

---

---

**Accessory Terminal Side:** Threaded bolt M3   
**Accessory Mating Side:** Sleeve

**Class:** 2

**023146**

**Gender:**  
Male

**Pins:** 9

**Termination:**  
Solder  
**Terminal Length:**  
6 mm

**Assembly Height:**  
6.3 mm

**Class:** 2

**Accessory Terminal Side:** Threaded bolt #4-40   
**Accessory Mating Side:** Sleeve

**023151**

**Gender:**  
Male

**Pins:** 9

**Termination:**  
Solder  
**Terminal Length:**  
6 mm

**Assembly Height:**  
6.3 mm

**Class:** 2

**Accessory Terminal Side:** Threaded bolt M3 / #4-40   
**Accessory Mating Side:** Sleeve

**023156**

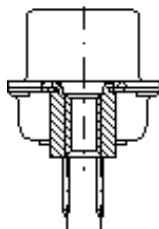
**Gender:**  
Male

**Pins:** 9

**Termination:**  
Solder  
**Terminal Length:**  
6 mm

**Assembly Height:**  
6.3 mm

**Class:** 2

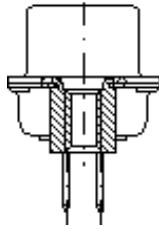
**PART NUMBER 024730****Accessory Terminal Side:** Retaining Clip  
**Accessory Mating Side:** Threaded sleeve #4-40**024730****Drawings:** JPG  
(view) N.A.  
DXF N.A. **PDF** (43 KB)**Gender:**  
Male**Catalog:** PDF N.A.**Pins:** 9**Request:** Information**Termination:**  
Solder  
**Terminal Length:**  
6 mm**Assembly Height:**  
6.3 mm**Class:** 2**PART NUMBER 053041****Accessory Terminal Side:** Retaining Clip  
**Accessory Mating Side:** Threaded sleeve M3**053041****Drawings:** JPG  
(view) N.A.  
DXF N.A. **PDF** (43 KB)**Gender:**  
Male**Catalog:** PDF N.A.**Pins:** 9**Request:** Information**Termination:**  
Solder  
**Terminal Length:**  
6 mm**Assembly Height:**  
6.3 mm**Class:** 2**PART NUMBER 023137****Accessory Terminal Side:** Rivet nut M3**023137****Drawings:** JPG  
(view) N.A.  
DXF N.A. **PDF** (51 KB)**Gender:**  
Male**Catalog:** PDF N.A.**Pins:** 15**Request:** Information**Termination:**  
Solder  
**Terminal Length:**  
6 mm**Assembly Height:**  
6.3 mm**Class:** 2

**PART NUMBER 023142**

**Accessory Terminal Side:** Rivet nut #4-40

**023142**

**Drawings:** JPG  
(view) N.A.  
DXF N.A. **PDF** (51 KB)



**Gender:**  
Male

**Pins:** 15

**Termination:**  
Solder  
**Terminal Length:**  
6 mm

**Assembly Height:**  
6.3 mm

**Class:** 2

**Catalog:** PDF N.A.

**Request:** Information

**PART NUMBER 023147**

**Accessory Terminal Side:** Threaded bolt M3  
**Accessory Mating Side:** Sleeve

**023147**

**Drawings:** JPG  
(view) N.A.  
DXF N.A. **PDF** (54 KB)

**Catalog:** PDF N.A.

**Request:** Information

**Gender:**  
Male

**Pins:** 15

**Termination:**  
Solder  
**Terminal Length:**  
6 mm

**Assembly Height:**  
6.3 mm

**Class:** 2

**PART NUMBER 023152**

**Accessory Terminal Side:** Threaded bolt #4-40  
**Accessory Mating Side:** Sleeve

**023152**

**Drawings:** JPG  
(view) N.A.  
DXF N.A. **PDF** (54 KB)

**Catalog:** PDF N.A.

**Request:** Information

**Gender:**  
Male

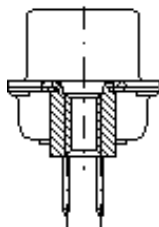
**Pins:** 15

**Termination:**  
Solder  
**Terminal Length:**  
6 mm

**Assembly Height:**  
6.3 mm

**Class:** 2

**PART NUMBER 023157****Accessory Terminal Side:** Threaded bolt M3 / #4-40  
**Accessory Mating Side:** Sleeve**023157****Drawings:** JPG  
(view) N.A.  
DXF N.A. **PDF** (54 KB)**Gender:**  
Male**Catalog:** PDF N.A.**Pins:** 15**Request:** Information**Termination:**  
Solder  
**Terminal Length:**  
6 mm**Assembly Height:**  
6.3 mm**Class:** 2**PART NUMBER 024731****Accessory Terminal Side:** Retaining Clip  
**Accessory Mating Side:** Threaded sleeve #4-40**024731****Drawings:** JPG  
(view) N.A.  
DXF N.A. **PDF** (43 KB)**Gender:**  
Male**Catalog:** PDF N.A.**Pins:** 15**Request:** Information**Termination:**  
Solder  
**Terminal Length:**  
6 mm**Assembly Height:**  
6.3 mm**Class:** 2**PART NUMBER 034916****Accessory Terminal Side:** Retaining Clip  
**Accessory Mating Side:** Threaded sleeve M3**034916****Drawings:** JPG  
(view) N.A.  
DXF N.A. **PDF** (43 KB)**Gender:**  
Male**Catalog:** PDF N.A.**Pins:** 15**Request:** Information**Termination:**  
Solder  
**Terminal Length:**  
6 mm**Assembly Height:**  
6.3 mm**Class:** 2

**PART NUMBER 023138****Accessory Terminal Side:** Rivet nut M3**023138****Drawings:** JPG  
(view) N.A.  
**DXF N.A. PDF** (51 KB)**Catalog:** PDF N.A.**Request: Information****Gender:**  
Male**Pins:** 25**Termination:**

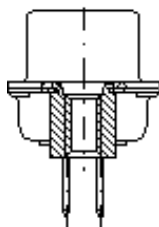
Solder

**Terminal Length:**

6 mm

**Assembly Height:**

6.3 mm

**Class:** 2**PART NUMBER 023143****Accessory Terminal Side:** Rivet nut #4-40**023143****Drawings:** JPG  
(view) N.A.  
**DXF N.A. PDF** (51 KB)**Catalog:** PDF N.A.**Request: Information****Gender:**  
Male**Pins:** 25**Termination:**

Solder

**Terminal Length:**

6 mm

**Assembly Height:**

6.3 mm

**Class:** 2**PART NUMBER 023148****Accessory Terminal Side:** Threaded bolt M3  
**Accessory Mating Side:** Sleeve**023148****Drawings:** JPG  
(view) N.A.  
**DXF N.A. PDF** (54 KB)**Catalog:** PDF N.A.**Request: Information****Gender:**  
Male**Pins:** 25**Termination:**

Solder

**Terminal Length:**

6 mm

**Assembly Height:**

6.3 mm

**Class:** 2



**PART NUMBER 023153****Accessory Terminal Side:** Threaded bolt #4-40  
**Accessory Mating Side:** Sleeve**023153****Drawings:** JPG  
(view) N.A.  
DXF N.A. **PDF** (54 KB)**Gender:**  
Male**Catalog:** PDF N.A.**Pins:** 25**Request:** Information**Termination:**  
Solder  
**Terminal Length:**  
6 mm**Assembly Height:**  
6.3 mm**Class:** 2**PART NUMBER 023158****Accessory Terminal Side:** Threaded bolt M3 / #4-40  
**Accessory Mating Side:** Sleeve**023158****Drawings:** JPG  
(view) N.A.  
DXF N.A. **PDF** (54 KB)**Gender:**  
Male**Catalog:** PDF N.A.**Pins:** 25**Request:** Information**Termination:**  
Solder  
**Terminal Length:**  
6 mm**Assembly Height:**  
6.3 mm**Class:** 2**PART NUMBER 024732****Accessory Terminal Side:** Retaining Clip  
**Accessory Mating Side:** Threaded sleeve #4-40**024732****Drawings:** JPG  
(view) N.A.  
DXF N.A. **PDF** (43 KB)**Gender:**  
Male**Catalog:** PDF N.A.**Pins:** 25**Request:** Information**Termination:**  
Solder  
**Terminal Length:**  
6 mm**Assembly Height:**  
6.3 mm**Class:** 2

**PART NUMBER 053043****Accessory Terminal Side:** Retaining Clip  
**Accessory Mating Side:** Threaded sleeve M3**053043****Drawings:** JPG  
(view) N.A.  
DXF N.A. **PDF** (43 KB)**Gender:**  
Male**Pins:** 25**Catalog:** PDF N.A.**Termination:**

Solder

**Request: Information****Terminal Length:**

6 mm

**Assembly Height:**

6.3 mm

**Class:** 2**PART NUMBER 023139****Accessory Terminal Side:** Rivet nut M3**023139****Drawings:** JPG  
(view) N.A.  
DXF N.A. **PDF** (51 KB)**Gender:**  
Male**Pins:** 37**Catalog:** PDF N.A.**Termination:**

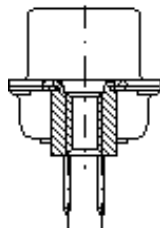
Solder

**Request: Information****Terminal Length:**

6 mm

**Assembly Height:**

6.3 mm

**Class:** 2**PART NUMBER 023144****Accessory Terminal Side:** Rivet nut #4-40**023144****Drawings:** JPG  
(view) N.A.  
DXF N.A. **PDF** (51 KB)**Gender:**  
Male**Pins:** 37**Catalog:** PDF N.A.**Termination:**

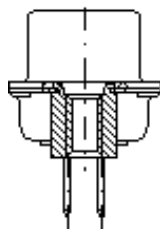
Solder

**Request: Information****Terminal Length:**

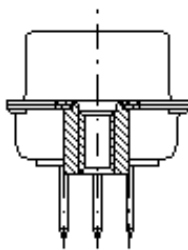
6 mm

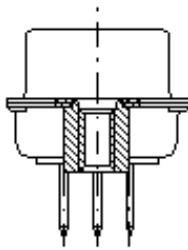
**Assembly Height:**

6.3 mm

**Class:** 2

**PART NUMBER 023149****Accessory Terminal Side:** Threaded bolt M3  
**Accessory Mating Side:** Sleeve**023149****Drawings:** JPG  
(view) N.A.  
DXF N.A. **PDF** (54 KB)**Gender:**  
Male**Catalog:** PDF N.A.**Pins:** 37**Request:** Information**Termination:**  
Solder  
**Terminal Length:**  
6 mm**Assembly Height:**  
6.3 mm**Class:** 2**PART NUMBER 023154****Accessory Terminal Side:** Threaded bolt #4-40  
**Accessory Mating Side:** Sleeve**023154****Drawings:** JPG  
(view) N.A.  
DXF N.A. **PDF** (54 KB)**Gender:**  
Male**Catalog:** PDF N.A.**Pins:** 37**Request:** Information**Termination:**  
Solder  
**Terminal Length:**  
6 mm**Assembly Height:**  
6.3 mm**Class:** 2**PART NUMBER 023159****Accessory Terminal Side:** Threaded bolt M3 / #4-40  
**Accessory Mating Side:** Sleeve**023159****Drawings:** JPG  
(view) N.A.  
DXF N.A. **PDF** (54 KB)**Gender:**  
Male**Catalog:** PDF N.A.**Pins:** 37**Request:** Information**Termination:**  
Solder  
**Terminal Length:**  
6 mm**Assembly Height:**  
6.3 mm**Class:** 2

**PART NUMBER 024733****Accessory Terminal Side:** Retaining Clip  
**Accessory Mating Side:** Threaded sleeve #4-40**024733****Drawings:** JPG  
(view) N.A.  
DXF N.A. **PDF** (43 KB)**Gender:**  
Male**Catalog:** PDF N.A.**Pins:** 37**Request:** Information**Termination:**  
Solder  
**Terminal Length:**  
6 mm**Assembly Height:**  
6.3 mm**Class:** 2**PART NUMBER 053044****Accessory Terminal Side:** Retaining Clip  
**Accessory Mating Side:** Threaded sleeve M3**053044****Drawings:** JPG  
(view) N.A.  
DXF N.A. **PDF** (43 KB)**Gender:**  
Male**Catalog:** PDF N.A.**Pins:** 37**Request:** Information**Termination:**  
Solder  
**Terminal Length:**  
6 mm**Assembly Height:**  
6.3 mm**Class:** 2**PART NUMBER 023140****Accessory Terminal Side:** Rivet nut M3**023140****Drawings:** JPG  
(view) N.A.  
DXF N.A. **PDF** (51 KB)**Gender:**  
Male**Catalog:** PDF N.A.**Pins:** 50**Request:** Information**Termination:**  
Solder  
**Terminal Length:**  
6 mm**Assembly Height:**  
6.3 mm**Class:** 2

**PART NUMBER 023145****Accessory Terminal Side:** Rivet nut #4-40**023145****Drawings:** JPG  
(view) N.A.  
DXF N.A. **PDF** (51 KB)**Gender:**  
Male**Pins:** 50**Termination:**  
Solder  
**Terminal Length:**  
6 mm**Assembly Height:**  
6.3 mm**Class:** 2**PART NUMBER 023150****Accessory Terminal Side:** Threaded bolt M3  
**Accessory Mating Side:** Sleeve**023150****Drawings:** JPG  
(view) N.A.  
DXF N.A. **PDF** (54 KB)**Catalog:** PDF N.A.**Request:** Information**Gender:**  
Male**Pins:** 50**Termination:**  
Solder  
**Terminal Length:**  
6 mm**Assembly Height:**  
6.3 mm**Class:** 2**PART NUMBER 023155****Accessory Terminal Side:** Threaded bolt #4-40  
**Accessory Mating Side:** Sleeve**023155****Drawings:** JPG  
(view) N.A.  
DXF N.A. **PDF** (54 KB)**Catalog:** PDF N.A.**Request:** Information**Gender:**  
Male**Pins:** 50**Termination:**  
Solder  
**Terminal Length:**  
6 mm**Assembly Height:**  
6.3 mm**Class:** 2

**PART NUMBER 023160****Accessory Terminal Side:** Threaded bolt M3 / #4-40**023160****Drawings:** JPG  
(view) N.A.  
DXF N.A. **PDF** (54 KB)**Catalog:** PDF N.A.**Request: Information****Gender:**  
Male**Pins:** 50**Termination:**  
Solder  
**Terminal Length:**  
6 mm**Assembly Height:**  
6.3 mm**Class:** 2**PART NUMBER 024734****Accessory Terminal Side:** Retaining Clip  
**Accessory Mating Side:** Threaded sleeve #4-40**024734****Drawings:** JPG  
(view) N.A.  
DXF N.A. **PDF** (43 KB)**Catalog:** PDF N.A.**Request: Information****Gender:**  
Male**Pins:** 50**Termination:**  
Solder  
**Terminal Length:**  
6 mm**Assembly Height:**  
6.3 mm**Class:** 2**PART NUMBER 053045****Accessory Terminal Side:** Retaining Clip  
**Accessory Mating Side:** Threaded sleeve M3**053045****Drawings:** JPG  
(view) N.A.  
DXF N.A. **PDF** (43 KB)**Catalog:** PDF N.A.**Request: Information****Gender:**  
Male**Pins:** 50**Termination:**  
Solder  
**Terminal Length:**  
6 mm**Assembly Height:**  
6.3 mm**Class:** 2