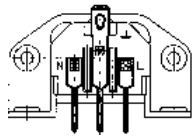
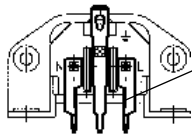


GSP1 AC Inlet for Screw-on PCB Mounting



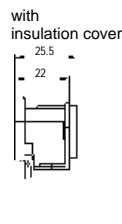
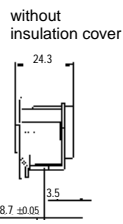
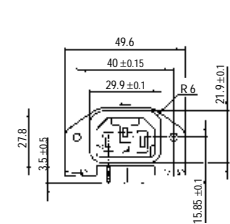
Former version
 GSP1.1xxx.x
 GSP1.2xxx.x
 GSP1.3xxx.x
 GSP1.4xxx.x



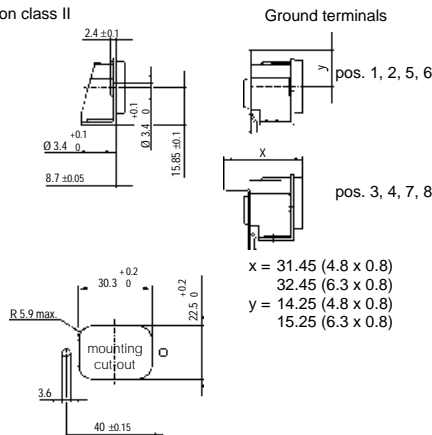
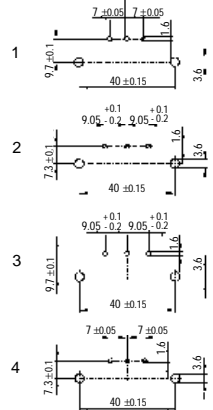
Improved version
 GSP1.6xxx.x
 GSP1.7xxx.x
 GSP1.8xxx.x
 GSP1.9xxx.x

Robust pins for easy pcb mounting

Schurter recommends the use of the improved, robust pin version for existing applications and new designs. The former version will still be available, but will no longer be shown in the catalog.



Pin spacings delete for protection class II



- For "cold" connections 70°C, Protection Class I or II
- Right-angle pcb mount with flange for
 - M3 screws
 - self-tapping 3mm screws
 - pre-inserted nuts for M3 screws
- Ground terminal is solder / quick-connect in 4.8 x 0.8mm or 6.3 x 0.8mm
- Ground terminal is positioned for access from the top or back of the connector
- Optional insulation cover for protection against electrical contact
- Material: temperature resistant thermoplastic UL 94V-0
 Terminals: brass, tin and nickel-plated

UL	recognition	15A/250V	File #E96454
CSA	certification	15A/250V	File #LR38456
VDE	approval	10A/250V	File #73753
SEMKO	approval	10A/250V	} File numbers on request
SEV	approval	10A/250V	



Order Numbers:

GSP 1 . X X X X . X



Standards: EN60320; IEC 320 / C14 / C18

Color of Housing

- 1* = Black
- 2 = Grey

Ground Terminal

- 0* = Protection class II, without ground
- 1* = Protection class I, ground terminal is solder quick connect 4.8x0.8mm, 90° to conn. axis
- 2 = Same as 1, but ground terminal is not connected with pcb
- 3* = Protection class I, ground terminal is solder quick connect 4.8x0.8mm in connector axis
- 4 = Same as 3, but ground terminal is not connected to pcb
- 5 = Protection class I, ground terminal is solder/quick-connect 6.3x0.8mm, 90° to conn. axis
- 6 = Same as 5, but ground terminal is not connected to pcb
- 7 = Protection class I, ground terminal is solder/quick-connect 6.3x0.8mm in connector axis
- 8 = Same as 7, but ground terminal is not connected to pcb

Insulation Cover

- 0* = Without insulation cover
- 1* = Black insulation cover, mounted **
- 2 = Black insulation cover included (separate) **

Mounting Flange

- 1* = Holes for cylindric M3 screws
- 2* = With 4 pre-inserted nuts
- 3 = PCB side with pre-inserted nut, front side with holes for M3 screws
- 4 = PCB side with holes for M3 screws, front side with pre-inserted nuts
- 5* = With holes for self-tapping 3mm screws (4 included)
- 6 = With holes for self-tapping 3mm screws (2 included)
- 7 = Mount with self-tapping 3mm screws (not incl.)

Terminal Spacing ¹⁾

- 6 = 7 / 9.7 mm
- 7 = 9.05 / 7.3 mm
- 8* = 9.05 / 9.7 mm
- 9* = 7 / 7.3 mm

Basic Specification

GSP 1 = Right-angle AC inlet for pcb mounting

* standard configuration. Contact Schurter, Inc. for non-standard configuration order minimums.

** For additional insulation cover (spare part only), use order number 0853.0804

¹⁾ See notes above regarding part number change for improved, robust pins

Ordering example:

GSP 1 . 2315 . 1

