

Customer Information Sheet

DRAWING No. M80-714XXXX

SHEET 2 OF 2

IF IN DOUBT - ASK

(C)

NOT TO SCALE

THIRD ANGLE PROJECTION

ALL DIMENSIONS IN mm

ORDER CODE:

M80-714XXXX

TOTAL No. OF CONTACTS
06, 15, 24, 30, 42

FINISH

- 01 = TIN/LEAD BODY, GOLD CLIP
- 05 = GOLD BODY, GOLD CLIP
- 42 = 100% TIN BODY, GOLD CLIP

POTTING WALLS

- BLANK = POTTING WALLS REMOVED
- A = POTTING WALLS RETAINED

SPECIFICATION:

MATERIALS:

- MOULDING = POLYAMIDE 46 UL94V-0
- CONTACTS = CLIP - BERYLLIUM COPPER, BODY - BRASS
- JACKSCREWS & CIRCLIP = STAINLESS STEEL

FINISH:

- CONTACTS = 01 - 3.5-5.0µ TIN/LEAD BODY, 0.30µ GOLD CLIP
- 05 - 0.25-0.30µ GOLD BODY, 0.30µ GOLD CLIP
- 42 - 3.5-5.0µ 100% TIN BODY, 0.30µ GOLD CLIP

ELECTRICAL:

- CURRENT RATING AT 25°C = 3.0A MAX (SMALL), 15.0A MAX (LARGE).
- CURRENT RATING AT 85°C = 2.2A MAX (SMALL), 11.0A MAX (LARGE).
- VOLTAGE PROOF = 360V AC/DC
- CONTACT RESISTANCE (INITIAL) = 20 MILLIOHMS MAX.
- CONTACT RESISTANCE (AFTER CONDITIONING) = 25 MILLIOHMS MAX.
- INSULATION RESISTANCE (INITIAL) = 1000 MEGOHMS MIN.
- INSULATION RESISTANCE (AFTER CONDITIONING) = 100 MEGOHMS MIN.

MECHANICAL:

- DURABILITY = 500 OPERATIONS
- INSERTION FORCE = 2.8N MAX, 1.0N MIN
- WITHDRAWAL FORCE = 1.8N MAX, 0.2N MIN

ENVIRONMENTAL:

- TEMPERATURE RANGE = -55°C TO +125°C

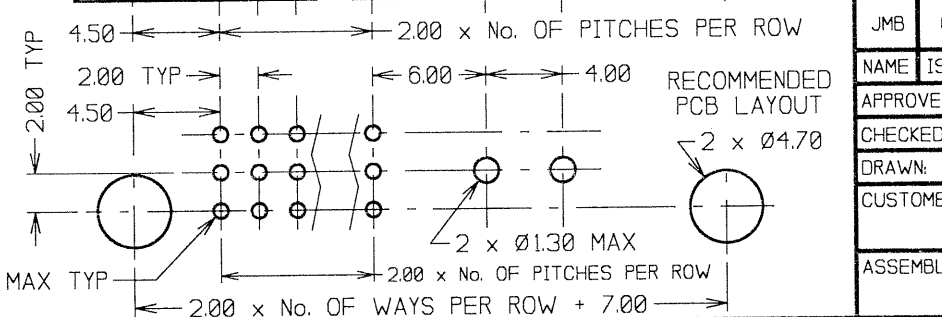
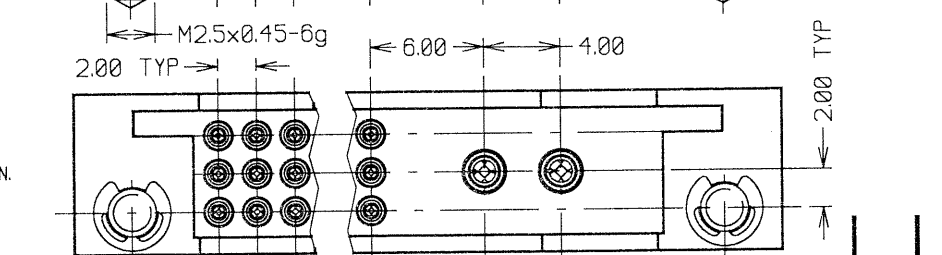
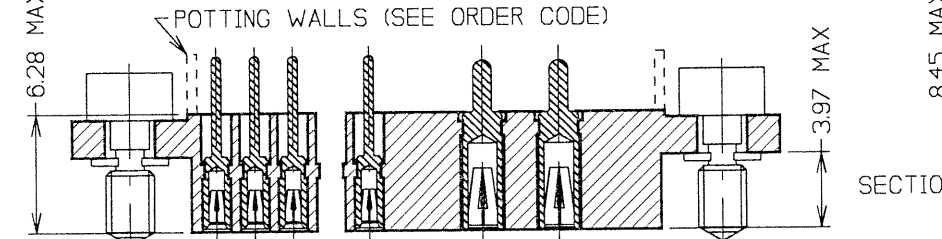
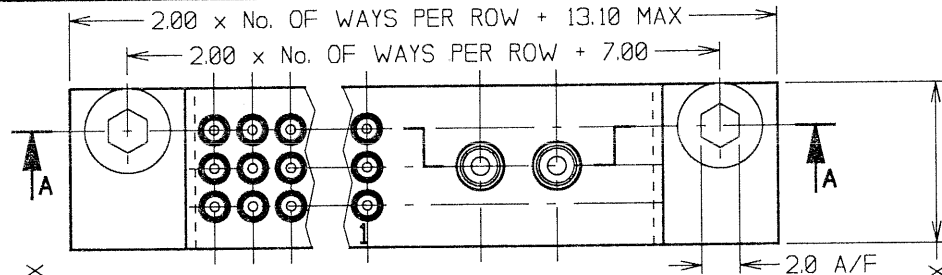
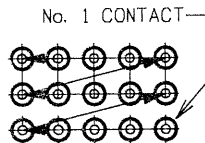
PACKING:

TRAYS

FOR COMPLETE SPECIFICATION, SEE COMPONENT SPECIFICATION C017XX (LATEST ISSUE)

NOTES:

1. FROM No. 1 POSITION, CONTACTS NUMBERED IN SEQUENCE FROM RIGHT TO LEFT AND FROM BOTTOM ROW TO TOP ROW (LOOKING ON BACK FACE).



JMB	6	19.07.06	9329
NAME	ISS.	DATE	C/NOTE
APPROVED:		PDC	
CHECKED:		MGP	
DRAWN:		W. J. BOURNE	
CUSTOMER REF.:			
ASSEMBLY DRG.:			

HARWIN

HARWIN USA
TEL: 603 893 5376
FAX: 603 893 5396
mis@harwin.com

HARWIN Europe (UK)
TEL: 023 9231 4545
FAX: 023 9231 4590
mis@harwin.co.uk

HARWIN Asia
TEL: +65 6 779 4909
FAX: +65 6 779 3868
mis@harwin.com.sg

THIS DRAWING AND ANY INFORMATION OR DESCRIPTIVE MATTER SET OUT HEREON ARE CONFIDENTIAL AND COPYRIGHT PROPERTY OF THE HARWIN GROUP AND MUST NOT BE DISCLOSED, LOANED, COPIED OR USED FOR MANUFACTURING, TENDERING OR FOR ANY OTHER PURPOSE WITHOUT THEIR WRITTEN PERMISSION.

TOLERANCES
X. = ±1mm
XX = ±0.25mm
XXX = ±0.10mm
XXXX = ±0.01mm
ANGLES = ±5°
UNLESS STATED

MATERIAL: SEE ABOVE
FINISH: SEE ABOVE
S/AREA: mm²

TITLE: 3-ROW 2mm PITCH FEMALE PC TAIL + POWER SOCKET ASSY + JACKSCREWS

DRAWING NUMBER: M80-714XXXX
SHT 2 OF 2