

Platinum™ Performance System



CORNING
Discovering Beyond Imagination

Corning
Cable Systems



Platinum™ Performance System

Corning Cable Systems introduces its Platinum™ Performance System, the revolutionary, low-loss connectivity system that keeps more optical power in your network. Featuring connectors that have a typical insertion loss of 0.05 dB, Platinum Performance System products, including cable assemblies, preconnectorized housings and coupler modules, enable you to optimize your network today with the assurance that your connections will exceed the performance requirements of tomorrow's applications.

Platinum Performance System products showcase Corning Cable Systems' technological leadership in high-precision passive optical assembly and state-of-the-art manufacturing facilities, providing you with a connector-based solution with fusion-splice loss performance.

Furthermore, Platinum Performance System products deliver superior performance in the same high-quality fiber management hardware types (Eclipse®, ACH™ and LDC hardware) that you use in your network today.

Features / Benefits

- Platinum Performance System products including assemblies, preconnectorized housings and coupler modules have a typical connector insertion loss of 0.05 dB per random mated connector pair
- The Platinum Performance System low-loss solution improves network performance and reach, allowing reduced transmission costs
- Superior optical performance allows the flexibility to transmit optical signals further or add additional components into the network without increasing network costs
- Connectors are compliant to TIA/EIA 604 Series, Fiber Optic Connector Intermateability Standard, FOCIS
- Cable assemblies are designed and tested to Telcordia GR-326-CORE
- Couplers are designed and tested to Telcordia GR-1221-CORE and GR-1209-CORE



Eclipse Frame Loaded with Platinum Performance System Products |
Photo NS019

Platinum™ Performance System

Platinum™ Connector Specifications

Typical Insertion Loss	0.05 dB
Maximum Insertion Loss	0.15 dB
Typical Reflectance	-75 dB
Maximum Reflectance	-65 dB

Cable Specifications

Fiber Type	Single-mode fiber
Cable Rating	OFNR riser rated
Outer Diameter	2.9 mm

Ordering Information – Cable Assemblies

1st connector

2nd connector

- A8784 -

1

2

3

- 1

Select connector type.

L1 = SC Angled PC, simplex
L2 = SC Angled PC, duplex
- 2

Select assembly length.

001 through 999
- 3

Select unit of measure.

F = Feet
M = Meters



Platinum SC Connector | Photo NS020

Example Part Number

Part Number	Description
L1L1-A8784-003M	Simplex SC APC to SC APC Jumper, 3 meters

Platinum™ Performance System

Ordering Information – Platinum™ Stubbed Hardware

□	□	□	□	□	□	□	□	□	□	-	□	□	00	□	□
1	2	3	4	5	6	7	8								

1 Select code for housing type.

Stubbed Connector Housing	Code	Housing Part Number	Height (in)	Panels per Housing	Fibers per Panel	Equip. Rack Width (in)	Hole Spacing	Connector Type	Other
Eclipse® Product Family	ECL	ECL-C4U	7 (4 RU)	12	6	19 or 23	EIA	SC Simplex	Eclipse Hardware Family
	ECL	ECL-C4U	7 (4 RU)	12	8	19 or 23	EIA	SC Duplex	Eclipse Hardware Family
	ECL	ECL-C4U	7 (4 RU)	12	12	19 or 23	EIA	SC Duplex	Eclipse Hardware Family
LDC Product Family	LDC	LDC-CMH-072	7 (4 RU)	12	6	19 or 23	EIA	SC Simplex	LGX® Compatible
	LDS	LDS-CMH-072	7 (4 RU)	12	6	19 or 23	EIA	SC Simplex	LGX Compatible (recessed panel)
	LH9	LDS-CMH-072	7 (4 RU)	12	8	19 or 23	EIA	SC Simplex	LGX Compatible
	LDS	LHS-CMH-144	9	12	12	19 or 23	EIA	SC Simplex	LGX Compatible
	LHR	LHR-CMH-144	9	12	12	19 or 23	EIA	SC Simplex	LGX Compatible (recessed panel)
ACH™ Product Family	ACH	ACH-CMH-072	8	12	6	23	WECO	SC Simplex	Angled Connector Housing
	ACH	ACH-CMH-072	8	12	8	23	WECO	SC Simplex	Angled Connector Housing
	ACH	ACH-CMH-072	8	12	12	23	WECO	SC Simplex	Angled Connector Housing

2 Select number of fibers.

72 = 72 fibers
96 = 96 fibers
E4 = 144 fibers

3 Select cable length in meters.

1 meter = 3.281 ft
0-99 meters = enter 2-digit number
100+ meters = enter alpha numeric from Table A
Examples: 31 = 31 m (100 ft)
A0 = 100 m
F5 = 155 m

4 Select number of fibers per panel. Refer to chart under option 1 above.

06 = 6 fibers per panel
08 = 8 fibers per panel
12 = 12 fibers per panel

5 Select connector code. Refer to chart under option 1 above.

L1 = SC Angled PC, simplex
L2 = SC Angled PC, duplex

6 Select cable type.

Loose Tube Cables (250 µm coated fibers)
W7 = ALTOS® Riser Cable
Tight-Buffered Cables (900 µm buffered fibers)
81 = MIC® Riser Cable

7 Select number of cables.

1 = One (default when 72 or 96 is selected under option 2)
2 = Two (default when E4 is selected under option 2)

8 Select cable entry.

A = Bottom/left
B = Top/right (default)
C = Top/left
D = Bottom/right

Table A

Codes for cable stub lengths over 99

A_ = 10_	AA = 340	BA = 580
B_ = 11_	AB = 350	BB = 590
C_ = 12_	AC = 360	BC = 600
D_ = 13_	AD = 370	BD = 610
E_ = 14_	AE = 380	BE = 620
F_ = 15_	AF = 390	BF = 630
G_ = 16_	AG = 400	BG = 640
H_ = 17_	AH = 410	BH = 650
J_ = 18_	AJ = 420	BJ = 660
K_ = 19_	AK = 430	BK = 670
L_ = 20_	AL = 440	BL = 680
M_ = 21_	AM = 450	BM = 690
N_ = 22_	AN = 460	BN = 700
P_ = 23_	AP = 470	BP = 710
Q_ = 24_	AQ = 480	BQ = 720
R_ = 25_	AR = 490	BR = 730
S_ = 26_	AS = 500	BS = 740
T_ = 27_	AT = 510	BT = 750
U_ = 28_	AU = 520	BU = 760
V_ = 29_	AV = 530	BV = 770
W_ = 30_	AW = 540	BW = 780
X_ = 31_	AX = 550	BX = 790
Y_ = 32_	AY = 560	BY = 800
Z_ = 33_	AZ = 570	BZ = 810

"I" and "O" are not used. Lengths from 100 to 339, use single letter plus number (1-9). Lengths over 339 m can be ordered in 10-meter increments only. Use double letters.

Platinum™ Performance System

Ordering Information – Pigtailed Hardware

P - - **R**

1 **2** **3** **4** **5** **6**

1 Select code for housing type.

Pigtailed Connector Housing		Housing Part Code	Part Number	Height (in)	Panels per Housing	Fibers per Panel	Equip. Rack Width (in)	Hole Spacing	Connector Type	Other
Eclipse® Product Family		ECL	ECL-C4U	7 (4 RU)	12	6	19 or 23	EIA	SC Simplex	Eclipse Hardware Family
		ECL	ECL-C4U	7 (4 RU)	12	8	19 or 23	EIA	SC Duplex	Eclipse Hardware Family
		ECL	ECL-C4U	7 (4 RU)	12	12	19 or 23	EIA	SC Duplex	Eclipse Hardware Family
LDC Product Family		LDC	LDC-CMH-072	7 (4 RU)	12	6	19 or 23	EIA	SC Simplex	LGX® Compatible
		LDS	LDS-CMH-072	7 (4 RU)	12	6	19 or 23	EIA	SC Simplex	LGX Compatible (recessed panel)
		LD9	LDS-CMH-072	7 (4 RU)	12	8	19 or 23	EIA	SC Simplex	LGX Compatible
		LHS	LHS-CMH-144	9	12	12	19 or 23	EIA	SC Simplex	LGX Compatible
		LHR	LHR-CMH-144	9	12	12	19 or 23	EIA	SC Simplex	LGX Compatible (recessed panel)
ACH™ Product Family		ACH	ACH-CMH-072	8	12	6	23	WECO	SC Simplex	Angled Connector Housing
		ACH	ACH-CMH-072	8	12	8	23	WECO	SC Simplex	Angled Connector Housing
		ACH	ACH-CMH-072	8	12	12	23	WECO	SC Simplex	Angled Connector Housing

2 Select number of fibers.

72 = 72 fibers
 96 = 96 fibers
 E4 = 144 fibers

3 Select panel fiber count.

06 = 6 fibers per panel
 08 = 8 fibers per panel
 12 = 12 fibers per panel

4 Select connector code.

Refer to chart under option 1 above.

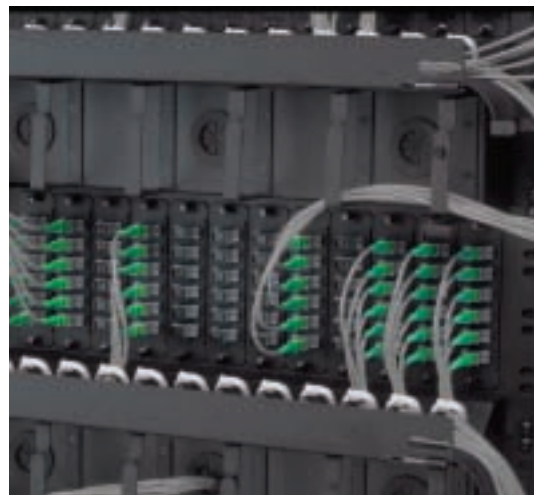
L1 = SC Angled PC, simplex
 L2 = SC Angled PC, duplex

5 Select pigtail length in meters.

3 = 3 m
 7 = 7 m
 A = 10 m

6 Select pigtail type.

P = 3 mm jacket
 H = MIC® Cable 900 µm subunits



Platinum Pigtailed Hardware | Photo NS018

Platinum™ Performance System

Ordering Information – Coupler Modules

☐ ☐ ☐ 1 ☐ ☐ L 1 ☐ L 1 ☐ ☐ ☐ ☐ ☐ ☐ ☐ ☐

1 **2** **3** **4** **5** **6** **7**

1 Select product family.

E = Eclipse® Product Family
 L = LDC Product Family
 A = ACH™ Unit Product family (HCM)

2 Select package size.

M = Module
 D = Double-wide module
 S = 1U Shelf

3 Select coupler optical specifications.

P = Dual-window narrowband
 (1300-1320 nm and 1540-1560 nm)
 W = Dual-window wideband
 (1260-1360 nm and 1480-1580 nm)

4 Select input/output configurations.

AA = Adapter inputs and outputs
 BB = Pigtail (3 mm) inputs and outputs

5 Select input pigtail length, in meters.

0 = no pigtails (adapters in/out)
 1 = 1 m
 3 = 3 m
 6 = 6 m
 A = 10 m
 L = 20 m

6 Select output pigtail length, in meters.

0 = no pigtails (adapters in/out)
 1 = 1 m
 3 = 3 m
 6 = 6 m
 A = 10 m
 L = 20 m



Platinum Coupler Modules | Photo NS021

7 Select coupler configuration.

Equal Splits

1012 = 1x2
 1013 = 1x3
 1014 = 1x4
 1015 = 1x5
 1018 = 1x8
 2012 = (2) 1x2s

Unequal Splits

A = 5/95
 B = 10/90
 C = 15/85
 D = 20/80
 E = 25/75
 F = 30/70
 G = 35/65
 H = 40/60
 J = 45/55
 K = 50/50

X = Input of next coupler is spliced to high-power leg of current coupler
 XX = Input of next coupler is spliced to high-power leg of previous coupler
 / = Input of next coupler is spliced to high-power leg of first coupler or first coupler after previous "/"
 - = Input of next coupler is spliced to next input port (multi-input only)



Corning Cable Systems LLC • PO Box 489 • Hickory, NC 28603-0489 USA • 1-800-743-2675 • FAX: +1-828-901-5973
International: +1-828-901-5000 • <http://www.corning.com/cablesystems> • Corning Cable Systems reserves the right to improve, enhance and modify the features and specifications of Corning Cable Systems' products without prior notification. ALTOS and MIC are registered trademarks of Corning Cable Systems Brands, Inc. Eclipse is a registered trademark of Corning Cable Systems LLC. Evolant is a trademark of Corning Cable Systems Brands, Inc. ACH and Platinum are trademarks of Corning Cable Systems LLC. Discovering Beyond Imagination is a trademark of Corning Incorporated. LGX is a registered trademark of Lucent Technologies. All other trademarks are the properties of their respective owners. Corning Cable Systems is ISO 9001 certified. © 2003 Corning Cable Systems. All rights reserved. Published in the USA. EVO-372-EN / April 2003 / 2.5M