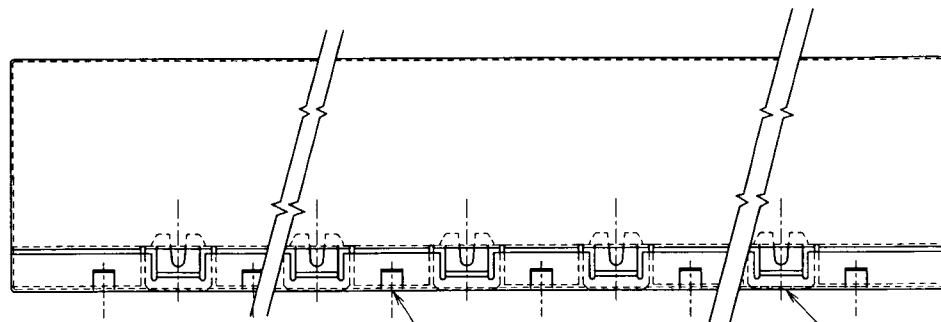


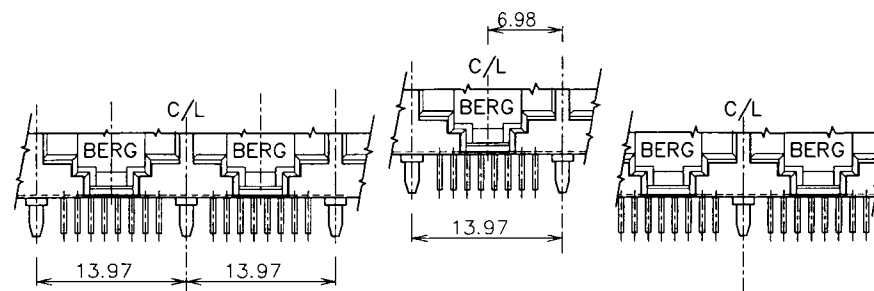
Tous droits strictement réservés. Reproduction ou communication à des tiers sans la forme que ce soit sans autorisation écrite du propriétaire. Droits de reproduction BERG ELECTRONICS BY

All rights strictly reserved. Reproduction or communication to third parties in any form without the written authority from the proprietor. Copyright BERG ELECTRONICS BY



GROUNDING TAB  
SEE SHEET (3) FOR  
LOCATING CONFIGURATION

LATCHING MECHANISM

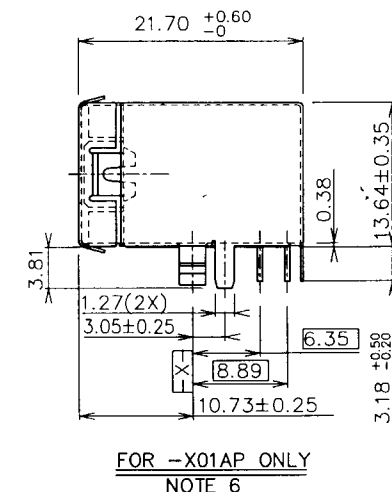
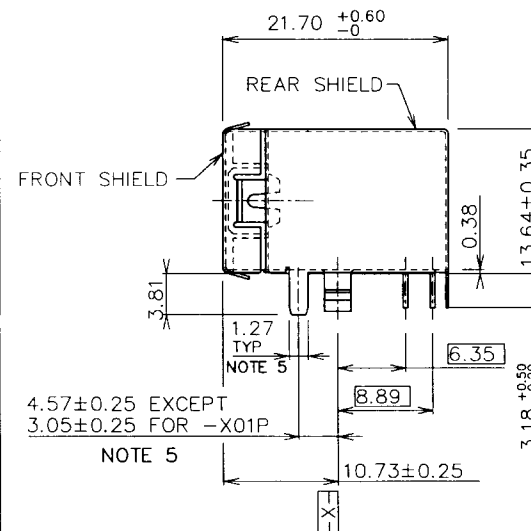
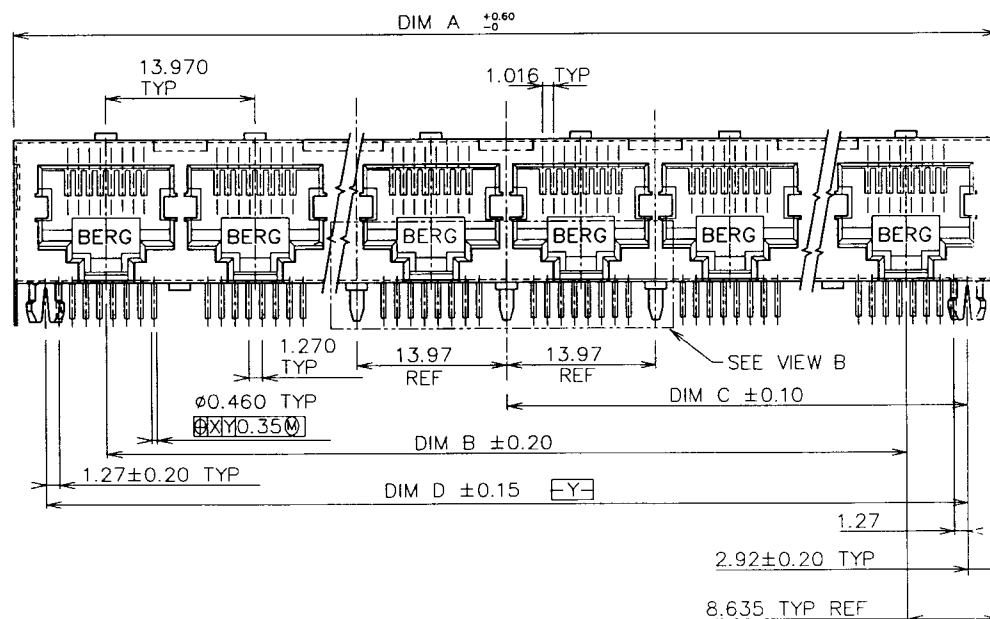


FOR PORT NO. 4, 6, 8, 10, 12

FOR PORT NO. 3, 5, 7, 9, 11

FOR 2-PORT

VIEW B



mat'l code				tolerance unless otherwise specified		CUSTOMER COPY		FCI	
rev.	ecn no.	dr	date	linear	.0 ± 0.25	projection	title	product family	code
A	T60117	CL	03/19/96		.00 ± 0.13				
B	T80155	CL	04/20/98		.000 ± 0.05	2/1	R/A 8-POS, GANG JACK. ASSY SHIELDED, SNAP PEG	GANG JACK	TWN
				angles	± 2'				
		dr	C L FENG	03/19/96	unit	mm/inch	size	dwg no.	sheet
		enrg	TONY CHIEN	03/19/96	scale				
		chr	TONY CHIEN	03/19/96	2/1	A3	61349	1 OF 4	
		appd	JENN TSAO	03/19/96					
sheet	revision	B	B	A	A				
index	sheet	1	2	3	4				

PDM: Rev:B

STATUS Released

Printed: Oct 26, 2005

Tous droits strictement réservés. Reproduction ou communication à des tiers interdite sans la permission écrite de la propriété de BERG ELECTRONICS.  
All rights strictly reserved. Reproduction or communication to third parties without written authority from the proprietor. Copyright BERG ELECTRONICS by


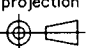
All rights strictly reserved. Reproduction or communication to third parties without written authority from the proprietor. Copyright BERG ELECTRONICS by

PRODUCT NO.	PORTS NO.	DIA $+0.60$ $-0$	DIM B $\pm 0.20$	DIM C $\pm 0.10$	DIM D $\pm 0.15$	GROUND LEG NUMBER ON THE BACK (VIEW B)	REMARK
61349-X01P/X01PN	1	15.74	—	5.715	11.43	NONE	NOTE 5
61349-X01AP/X01APN	1	15.74	—	5.715	11.43	NONE	NOTE 6
61349-X02P/X02PN	2	30.98	13.97	12.700	25.40	1	
61349-X03P/X03PN	3	44.95	27.94	19.685	39.37	2	
61349-X04P/X04PN	4	58.92	41.91	26.670	53.34	3	
61349-X05P/X05PN	5	72.89	55.88	33.655	67.31	2	
61349-X06P/X06PN	6	86.86	69.85	40.640	81.28	3	
61349-X07P/X07PN	7	100.83	83.82	47.625	95.25	2	
61349-X08P/X08PN	8	114.80	97.79	54.610	109.22	3	
61349-X09P/X09PN	9	128.77	111.76	61.595	123.19	2	
61349-X10P/X10PN	10	142.74	125.73	68.580	137.16	3	
61349-X11P/X11PN	11	156.71	139.70	75.565	151.13	2	
61349-X12P/X12PN	12	170.68	153.67	82.550	165.10	3	

NOTES:

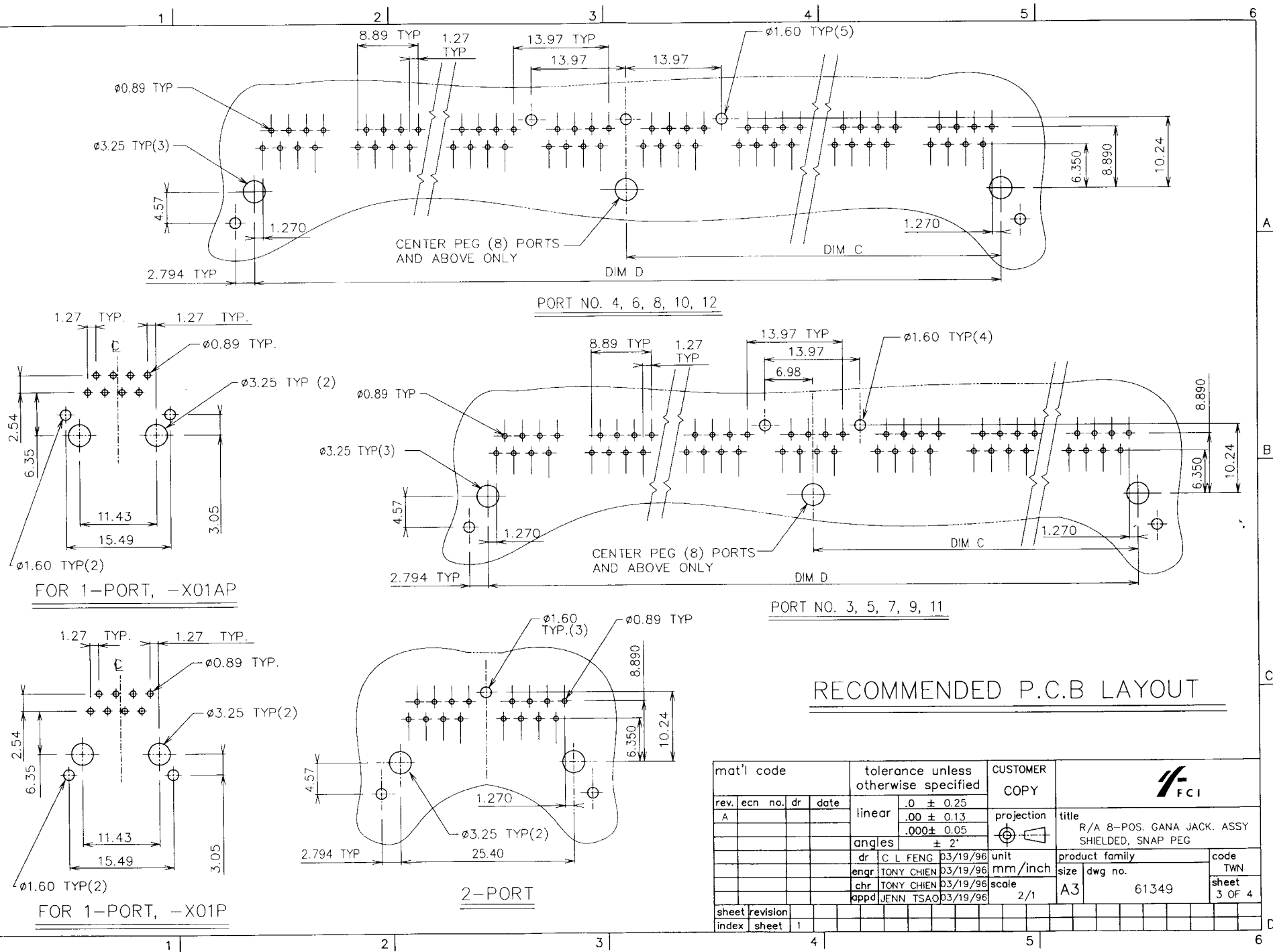
1. RECOMMENDED P.C.B THICKNESS 1.60 MM
2. HOUSING MAT'L: NYLON 6/6, 25% GLASS REINFORCED,
3. CONTACTS: PHOS BRONZE ALLOY UNS-C51000,  
Ø 0.460 ROUND WIRE, PLATING SEE TABLE.
4. SHIELDING MATERIAL: 0.25MM THICK, COPPER ALLOY.  
SHIELDING PLATING:  
a. FOR 61349-XXXP PLATING: 100u" MIN. TIN-LEAD PLATED.  
b. FOR 61349-XXXPN PLATING: 30u" MIN. NICKEL PLATED.
5. SPECIALLY FOR ONE-PORT P/N 61349-X01P & -X01PN ONLY.  
SOLDER TAIL OF SHIELD IS 1.02 WIDE, DISTANCE FROM  
PCB PEG TO THE SOLDER TAIL IS 3.05.
6. SPECIALLY FOR ONE-PORT P/N 61349-X01AP & X01APN ONLY.  
SOLDER TAIL OF SHIELD IS 1.27 WIDE, DISTANCE FROM  
PCB PEG TO THE SOLDER TAIL IS 3.05. SEE PAGE 1  
SIDE VIEW FOR DETAILS.
7. ALL DIMENSIONS IN MILLIMETER.
8. CENTER PEG FOR 8 PORTS AND ABOVE.

PLATING CODE X	PLATING
0	30 $\mu$ " G.X.T.
1	15 $\mu$ " GOLD.
3	30 $\mu$ " GOLD.
5	50 $\mu$ " GOLD.

mat'l code				tolerance unless otherwise specified		CUSTOMER COPY					
rev.	ecn no.	dr	date	linear	.0 $\pm$ 0.25	projection		title R/A 8-POS. GANA JACK. ASSY SHIELDED, SNAP PEG			
B					.00 $\pm$ 0.13						
					.000 $\pm$ 0.05						
				angles	$\pm$ 2°						
				dr	C L FENG 03/19/96	unit		product family		GANG JACK	code
				enrg	TONY CHIEN 03/19/96	mm/inch		size		dwg no.	TWN
				chr	TONY CHIEN 03/19/96	scale		A3		61349	sheet
				appd	JENN TSAO 03/19/96	3/1					2 OF 4
sheet	revision										
index	sheet										

All rights strictly reserved. Reproduction or lease to third parties in any form or by any means, electronic or mechanical, including photocopying, recording, or by any information storage and retrieval system, is not permitted without written authority from the proprietor.

Property of c. BERG ELECTRONICS.  
Copyright BERG ELECTRONICS by



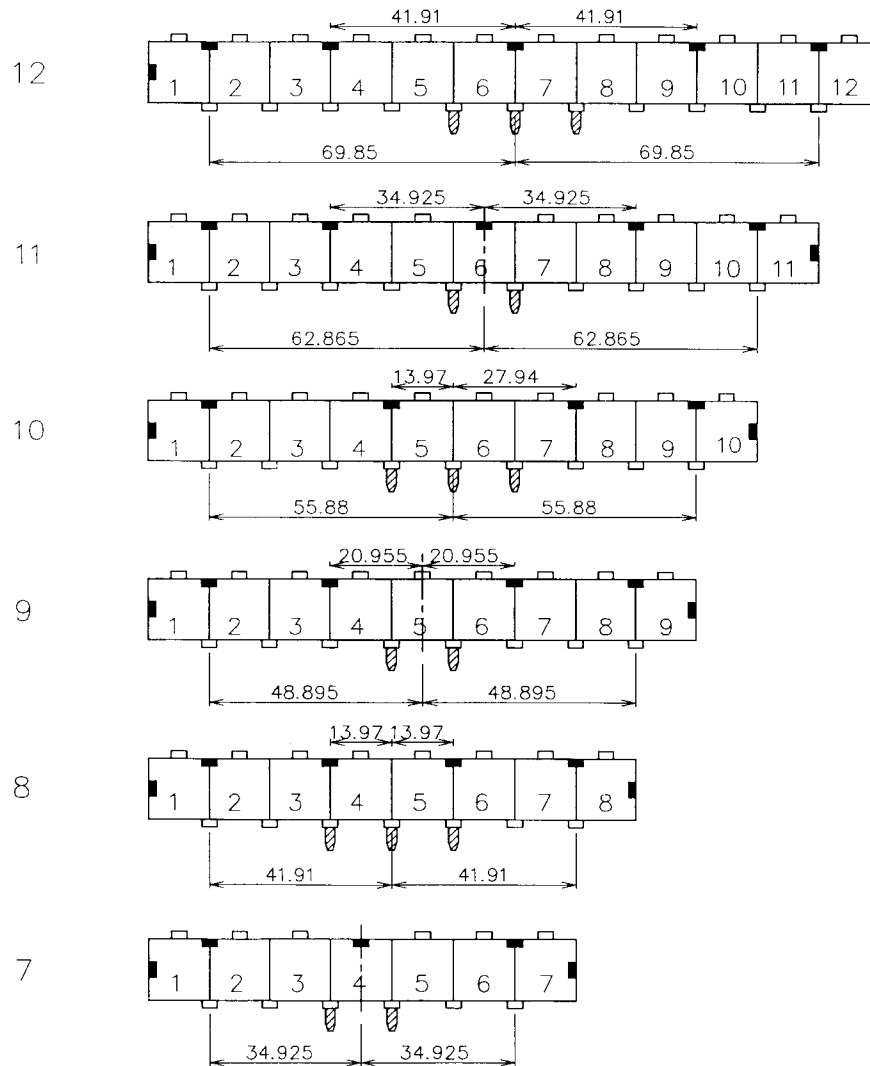
Tous droits strictement réservés. Reproduction ou communication à des tiers sans la permission écrite du propriétaire. Droits de reproduction BERG ELECTRONICS by FCI

All rights strictly reserved. Reproduction or issue to third parties in any form without the written authority from the proprietor. Copyright BERG ELECTRONICS by FCI

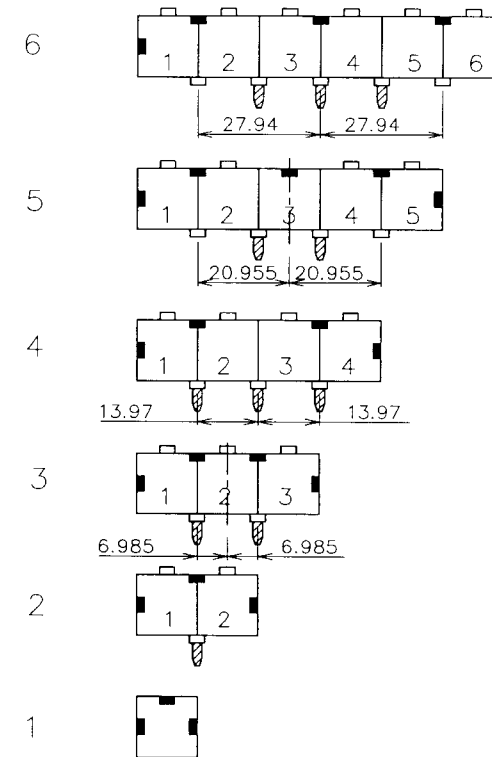
# LATCHING AND GROUNDING TAB LOCATING CONFIGURATION

- INDICATES LATCHING TAB (SEE DETAIL A ON SHEET 1)
- INDICATES GROUNDING TAB ON THE FRONT OF PRODUCT (SEE SHEET 1)
- ▨ INDICATES GROUNDING LEG ON THE BACK OF PRODUCT (VIEW B)

## PORT NUMBERS



## PORT NUMBERS



mat'l code				tolerance unless otherwise specified		CUSTOMER COPY				title R/A 8-POS GANG JACK. ASSY SHIELDED, SNAP PEG	
rev.	ecn no.	dr	date	linear	.0 ± 0.25 .00 ± 0.13 .000 ± 0.05	projection					
				angles	± 2°						
				dr	C. L. FENG 03/19/96	unit	mm/inch	product family		code	
				engr	TONY CHIEN 03/19/96	size	A3	dwg no.		TWN	
				chr	TONY CHIEN 03/19/96	scale		61349		sheet	
				appd	JENN TSAO 03/19/96					4 OF 4	
sheet	revision			index	sheet	1					