
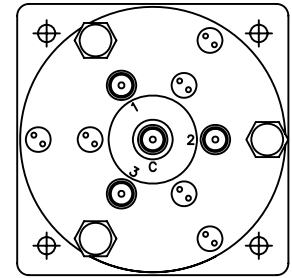
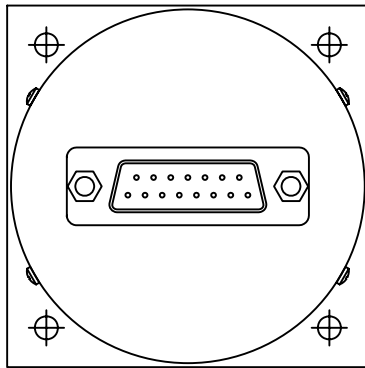


| REVISIONS |                    |        |          |
|-----------|--------------------|--------|----------|
| REV.      | DESCRIPTION        | DATE   | APPROVED |
| A         | PRODUCTION RELEASE | 2/1/07 | K.R.     |

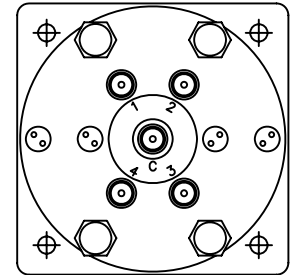
| Nominal<br>Coil Voltage | Part Number   |               |               |
|-------------------------|---------------|---------------|---------------|
|                         | SP3T          | SP4T          | SP6T          |
| 24 Vdc                  | 531JY-481103A | 541JY-481103A | 561JY-481103A |
| 28 Vdc                  | 531JY-431103A | 541JY-431103A | 561JY-431103A |

|  |             |                 |               |  |  |              |   |   |
|--|-------------|-----------------|---------------|--|--|--------------|---|---|
| REVISIONS  | A           | A               | A             |  |  |              |  <b>DowKey<sup>®</sup><br/>Microwave<br/>CORPORATION</b><br><small>A <del>DOVER</del> TECHNOLOGIES COMPANY</small> | 4822 McGrath Street<br>Ventura, CA. 93003-5641<br>PH: (805) 650-0260<br>FAX: (805) 650-1734 |
| SHEET NO.  | 1           | 2               | 3             |  |  |              |   |   |
| APPROVALS  |             | DATE            |               |  |  |              |   |   |
| DRAWN  | SARA LEE    |                 | 1/31/07       |  |  |              |   |   |
| ENG  | G. NICKLAUS |                 | 2/1/07        |  |  |              |   |   |
| ENG. MGR.  | R. SZNUK    |                 | 1/31/07       |  |  |              |   |   |
| SALES MGR.   | J. TRUJILLO |                 | 1/31/07       |  |  |              |   |   |
| Q.A. MGR.  | N. SANDERS  |                 | 2/1/07        |  |  |              |   |   |
| MFG. MGR.  | R. GONZALEZ |                 | 2/1/07        |  |  |              |   |   |
| SWITCH, 3-6 POSITION, LATCHING SELF CUT-OFF<br>2.9mm (K) FEMALE CONNECTORS, TTL CONTROL<br>50 OHM [2W] EXT. TERM, DA15P DC CONN., 40 GHZ |             | CODE IDENT. NO. | DWG. NO.      |  |  |              |   |   |
|  |             | 00471           | 5X1JY-4X1103A |  |  |              |   |   |
| SCALE  | NONE        |                 | FINAL ASSY:   |  |  | SHEET 1 OF 3 |   |   |

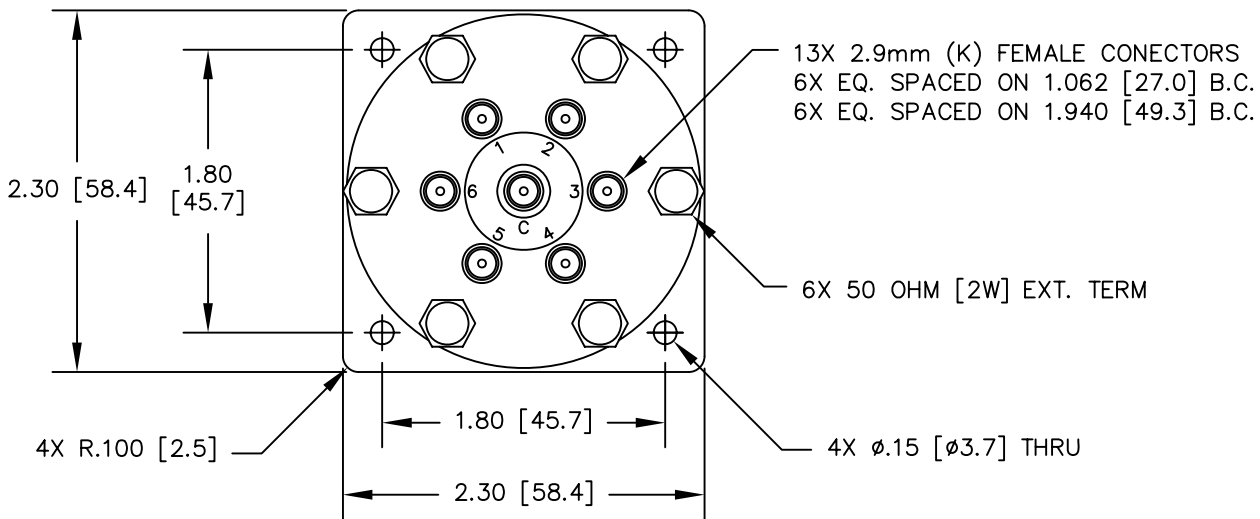
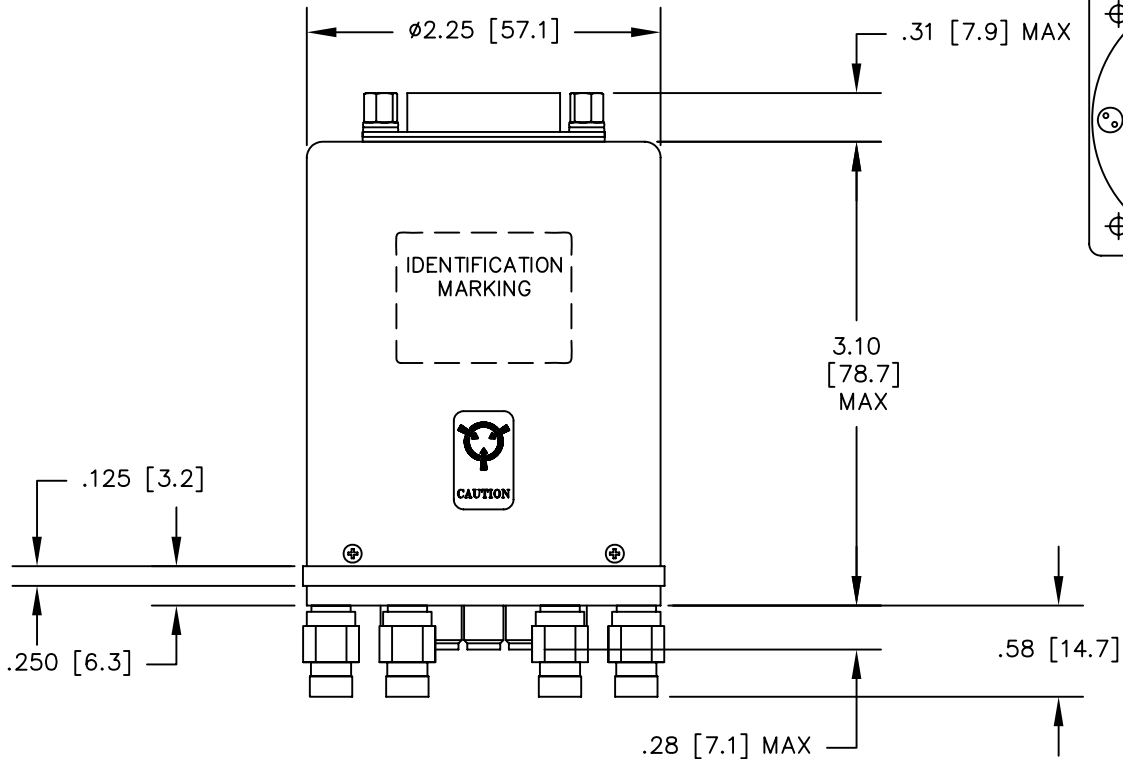
**OUTLINE DRAWING:**



**3 POSITION**



**4 POSITION**



[ ] MILLIMETERS

|   |                          |                           |           |
|---|--------------------------|---------------------------|-----------|
| UNLESS OTHERWISE SPECIFIED TOLERANCES ARE:<br>.XXX ±.010 ANGLES: ±3'<br>.XX ±.030 | CODE IDENT. NO.<br>00471 | DWG. NO.<br>5X1JY-4X1103A | REV.<br>A |
|   | SCALE NONE               | SHEET 2 OF 3              |           |

# SPECIFICATIONS:

## 1. RF CHARACTERISTICS:

|                              |        |        |        |         |         |
|------------------------------|--------|--------|--------|---------|---------|
| 1.1 FREQUENCY (GHz):         | DC-6   | 6-12   | 12-18  | 18-26.5 | 26.5-40 |
| 1.2 VSWR (RATIO MAX):        | 1.30:1 | 1.40:1 | 1.50:1 | 1.70:1  | 1.95:1  |
| 1.3 INSERTION LOSS (dB MAX): | 0.30   | 0.40   | 0.50   | 0.70    | 0.95    |
| 1.4 ISOLATION (dB MIN):      | 70     | 60     | 60     | 55      | 50      |
| 1.5 RF POWER (WATTS CW MAX): | 100    | 70     | 60     | 45      | 30      |

## 2. ACTUATION DATA:

|     |                 |                   |   |
|-----|-----------------|-------------------|---|
| 2.1 | NOMINAL VOLTAGE | OPERATING VOLTAGE | CURRENT (TYP)<br>@ NOMINAL VOLTAGE & 25°C |
|     | 24              | 20-28             | 240mA                                     |
|     | 28              | 24-32             | 210mA                                     |

- 2.2 SWITCHING TIME: 15ms MAX  
 2.3 OPERATING MODE: LATCHING SELF CUT-OFF

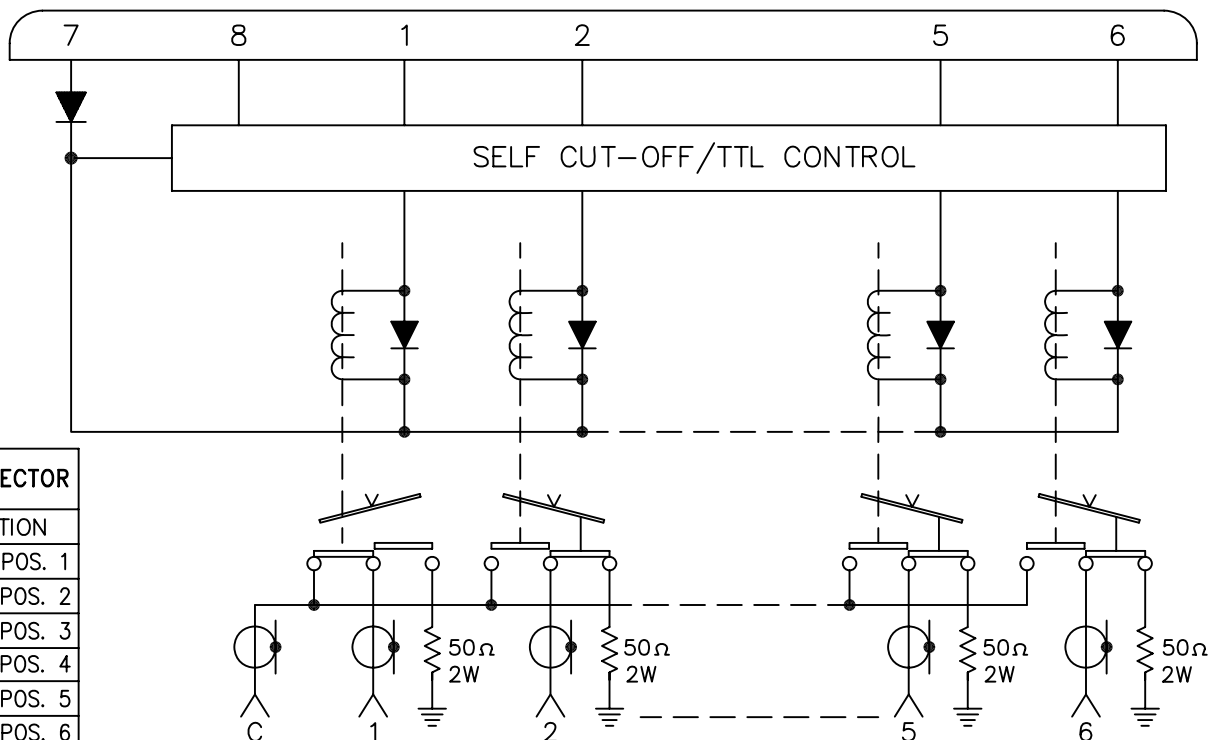
## 3. MECHANICAL:

- 3.1 RF CONTACTS: BREAK BEFORE MAKE  
 3.2 WEIGHT: 11oz. (312g.) NOMINAL  
 3.3 DESIGN LIFE: 1,000,000 CYCLES MIN

## 4. ENVIRONMENTAL:

- 4.1 OPERATING TEMPERATURE: -25°C TO +65°C  
 4.2 STORAGE TEMPERATURE: -55°C TO +85°C  
 4.3 SEAL: SAND AND DUST

# SCHEMATIC:



### DE9P CONNECTOR

| PIN  | FUNCTION     |
|------|--------------|
| 1    | LOGIC POS. 1 |
| 2    | LOGIC POS. 2 |
| 3    | LOGIC POS. 3 |
| 4    | LOGIC POS. 4 |
| 5    | LOGIC POS. 5 |
| 6    | LOGIC POS. 6 |
| 7    | (+) VDC      |
| 8    | (-) COM      |
| 9-15 | SPARE        |

LOGIC LOW (OFF) = 0-0.8Vdc  
 LOGIC HIGH (ON) = 2.4-5.5Vdc

|                          |                           |           |
|--------------------------|---------------------------|-----------|
| CODE IDENT. NO.<br>00471 | DWG. NO.<br>5X1JY-4X1103A | REV.<br>A |
| SCALE NONE               | SHEET 3 OF 3              |           |