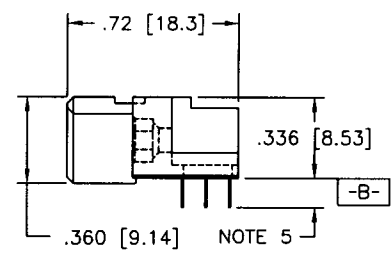
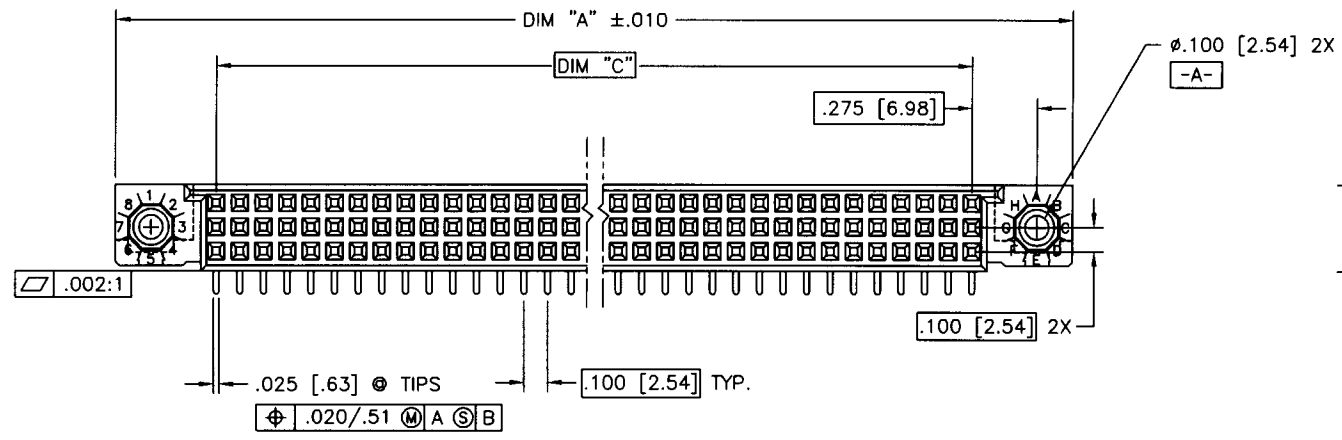
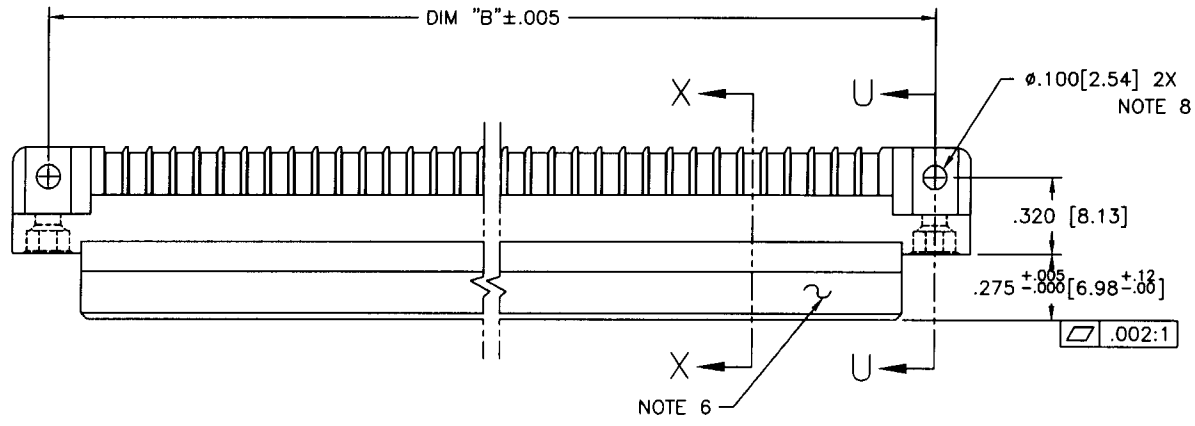


Tous droits strictement réservés. Reproduction ou communication à des tiers interdite sous quelque forme que ce soit sans autorisation écrite du propriétaire. Propriété de c FCI. Droits de reproduction FCI.

All rights strictly reserved. Reproduction or issue to third parties in any form whatever is not permitted without written authority from the proprietor. Property of FCI. Copyright FCI.

PRODUCT NUMBER
SEE NOTE 1



mat'l. code		tolerances unless otherwise specified		CUSTOMER COPY		 Electronics FCI www.fciconnect.com	
NOTE 3				linear		title	
ltr	ecn no	dr	date	.XX±.01/.X±.3		3 ROW R/A RECEPTACLE	
D	V40837	PDP	5/5/94	.XXX±.005/.XX±.13		SOLDER TO BOARD, 0 G.P.	
E	V41511	GAH	10/13/94	.XXXX±.0020/.XXX±.051		product family HPC	
F	V60864	GIP	6/5/96	angles		size	
G	V61173	MSC	9/4/96	G. PETERS 6/5/96		50294	
H	V90624	HTB	3/8/99	S. CLARK 6/3/96		code 213	
J	V00254	JWS	1/13/00	S. CLARK 6/5/96		sheet 1 of 3	
K	V01300	HTB	4/13/00	S. CLARK 6/5/96		scale 1:1	
sheet	revision	K	K	K		cage code 22526	
index	sheet	1	2	3			

ACAD

PDM: Rev:K

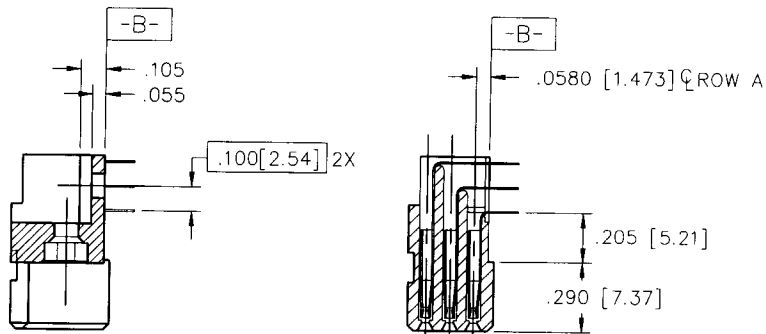
STATUS: Released

Printed: Mar 04, 2005

Tous droits strictement réservés. Reproduction ou communication à des tiers interdite, sous quelque forme que ce soit sans autorisation écrite du propriétaire. Property of FCI. Droits de reproduction FCI.

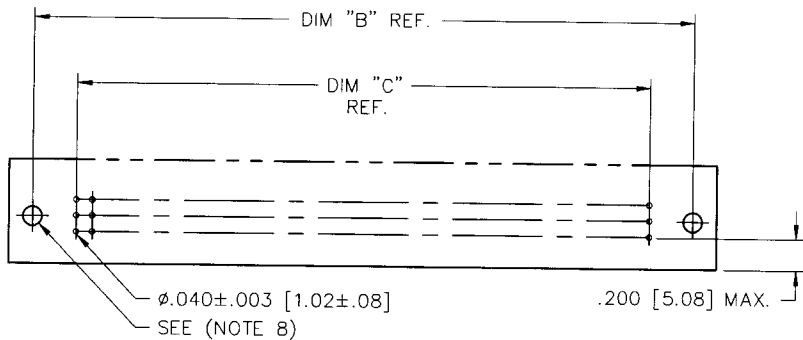
All rights strictly reserved. Reproduction or issue to third parties in any form whatever is not permitted without written authority from the proprietor. Property of FCI. Copyright FCI.

PRODUCT NUMBER	DIM.	LENGTH FORMULAS
SEE NOTE 1	DIM A	.100/2.54 X NO. OF COLUMNS + .75/19.1
	DIM B	.100/2.54 X NO. OF COLUMNS + .450/11.43
	DIM C	.100/2.54 X NO. OF COLUMNS - .100/2.54



SECTION U-U
NO SPECIAL FEATURE

SECTION X-X



RECOMMENDED PCB LAYOUT
(ALL HOLES LOCATED ON .100 [2.54] GRID UNLESS OTHERWISE SPECIFIED)

NOTES:

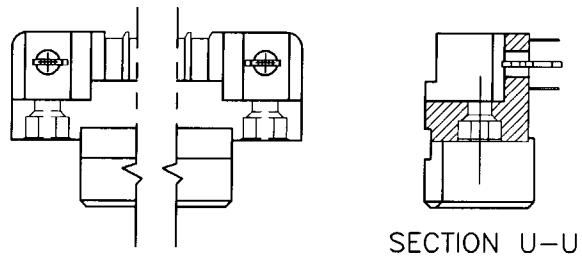
- PRODUCT NUMBERING CODE:
50294 - X YYY Z S
SPECIAL FEATURES (NOTE 8)
TAIL LENGTH (NOTE 5)
NO. OF POSITIONS (NOTE 2)
PLATING (NOTE 4)
BASE NUMBER
- THIS PRODUCT IS CONFIGURED IN SIZES OF 6 thru 80 COLUMNS IN INCREMENTS OF ONE.
i.e.: 6,7,8,9.....79,80.
- HOUSING MATERIAL: GLASS & MINERAL FILLED HIGH-TEMP THERMOPLASTIC, FLAME RETARDANT PER UL94 V-0.
CONTACT MATERIAL: BeCu
- PLATING CONTACT AREA OPTIONS:
1 = 30u"/.76u GOLD
3 = 50u"/1.27u GOLD
5 = 30u"/.76u GXT
ALL SOLDER TAILS TIN/LEAD
- TAIL LENGTH OPTIONS:
E = .125±.010 / 3.18±.25
F = .145±.010 / 3.68±.25
H = .180±.010 / 4.57±.25
- MANUFACTURE'S NAME, PART NUMBER AND LOT CODE TO APPEAR ON THIS SURFACE PER BUS-12-108.
- FOR DOCUMENTATION MENU, SEE SPEC. BUS-01-057.
- SPECIAL FEATURES (SEE SHEET 3):
_ = IF CODE IS OMITTED FROM PRODUCT NO.; CONNECTOR IS PROVIDED AS SHOWN, NO SPECIAL FEATURES ARE SELECTED. FOR P.C.B. ATTACHMENT IN A $\phi.120 [3.05]$ MOUNTING HOLE.
"A" = IF SPECIFIED, PRE-INSTALLED CLAW FOR P.C.B. ATTACHMENT IN A $\phi.100 [2.54]$ MOUNTING HOLE. (AVAILABLE IN "E" TAIL LENGTH ONLY).
"B" = IF SPECIFIED, PRE-INSTALLED CLAW FOR P.C.B. ATTACHMENT IN A $\phi.120 [3.05]$ MOUNTING HOLE.
"C" = IF SPECIFIED, MOLDED GUIDE PINS WITH PRE-INSTALLED CLAW FOR P.C.B. ATTACHMENT IN A $\phi.120 [3.05]$ MOUNTING HOLE.
"D" = IF SPECIFIED, MOLDED GUIDE PINS w/ $\phi.120 [3.05]$ MOUNTING HOLE (NO CLAW).
- CLAW DIMENSION DETERMINED BY P.C.B. HOLE DIAMETER.

mat'l. code				tolerances unless otherwise specified		CUSTOMER COPY		Electronics FCI	
ltr	ecn no	dr	date	linear	.XX±.01/.X±.3	projection	www.fciconnect.com		
K					.XXX±.005/.XX±.13		title		
				angles	.XXX±.0020/.XXX±.051		3 ROW R/A RECEPTACLE SOLDER TO BOARD, 0 G.P.		
				dr	G. PETERS 6/5/96	INCH/MM	product family	HPC	
				enrg	S. CLARK 6/3/96	scale	size	dwg no	
				chr	S. CLARK 6/5/96	1:1	A		code
				appd	S. CLARK 6/5/96		50294		213
sheet index	revision sheet							sheet 2 of	

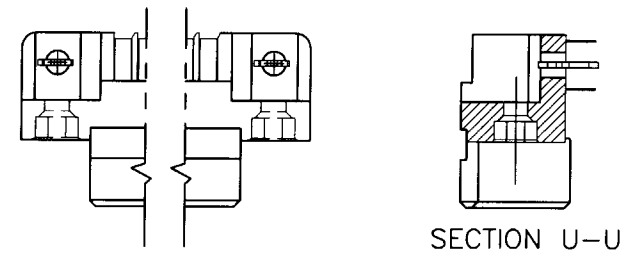
cage code
22526

PRODUCT NUMBER
SEE NOTE 1

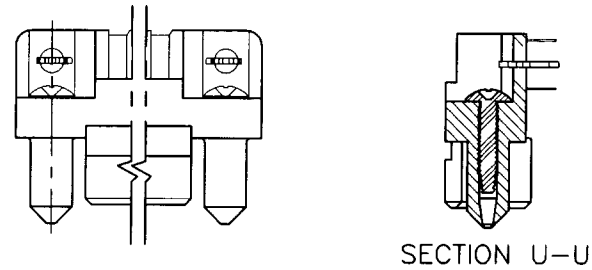
SPECIAL FEATURE OPTION A



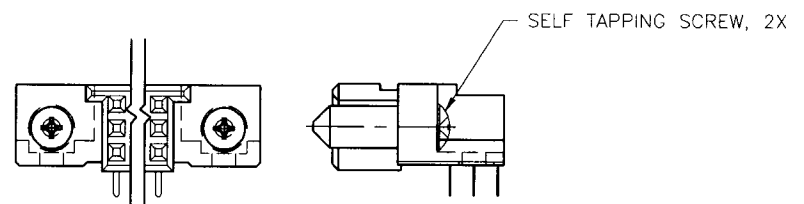
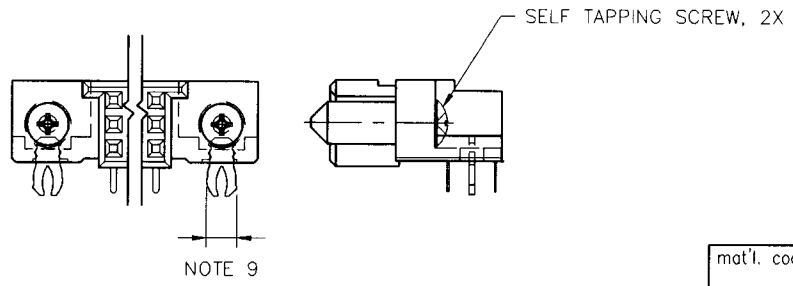
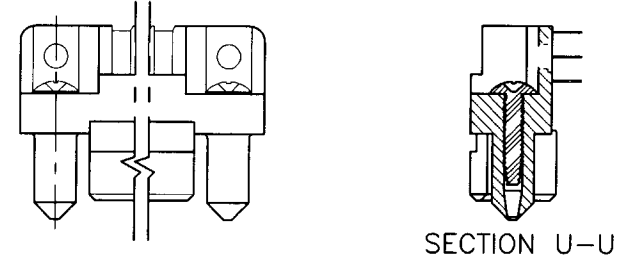
SPECIAL FEATURE OPTION B



SPECIAL FEATURE OPTION C



SPECIAL FEATURE OPTION D



Tous droits strictement reserves. Reproduction ou communication a des tiers interdite sous quelque forme que ce soit sans autorisation ecrite du proprietaire. Propriete de c FCI. Droits de reproduction FCI.

All rights strictly reserved. Reproduction or issue to third parties in any form whatever is not permitted without written authority from the proprietor. Property of FCI. Copyright FCI.



mat'l. code				tolerances unless otherwise specified		CUSTOMER COPY	Electronics FCI www.fciconnect.com
ltr	ecn no	dr	date	linear	.XX±.01/.X±.3		
K					.XXX±.005/.XX±.13		3 ROW R/A RECEPTACLE SOLDER TO BOARD, 0 G.P.
				angles	.XXXX±.0020/.XXX±.051		
				dr	0° ±2'		size
				enr		scale	dwg no
				chr	T. BREWBAKER 4/13/00	N.T.S.	A
				appd	M. GRAY 4/13/00		50294
					M. GRAY 4/13/00		sheet 213
sheet index	revision sheet						3 of