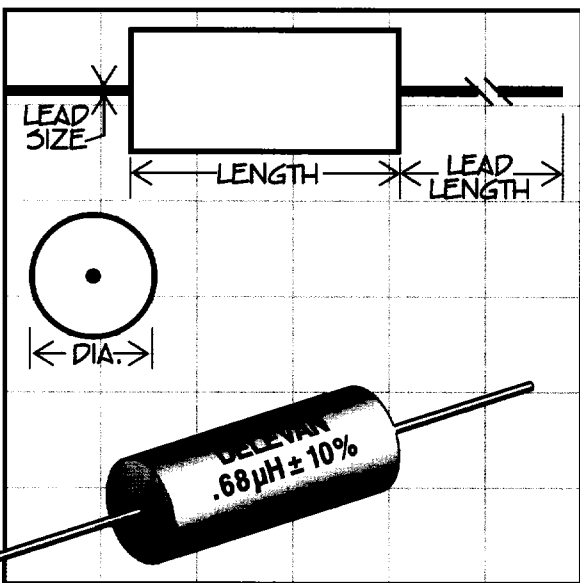


Series 1025 & 1026

Molded Unshielded RF Coils



Military Specifications (1025 Series Only)

MS75083 (LT4K); MS75084 (LT10K); MS75085 (LT10K)

Physical Parameters

	Inches	Millimeters
Length	0.250 ± 0.010	6.35 ± 0.25
Diameter	0.095 ± 0.010	2.41 ± 0.25
Lead Size		
AWG #24 TCW	0.020 ± 0.0015	0.508 ± 0.038
Lead Length	1.5 ± 0.12	38.1 ± 3.05

Current Rating at 90°C Ambient

LT4K 35°C Rise

LT10K 15°C Rise

Operating Temperature Range

LT4K -55°C to +125°C

LT10K -55°C to +105°C

Maximum Power Dissipation at 90°C

Phenolic: LT4K 0.21 W

Iron: LT10K 0.09 W

Ferrite: LT10K 0.073 W

Weight Max. (Grams) 0.3

• For in-between values, see Series 1782 (page 51)

Notes (1026 Series only) Resonant Frequency Values are calculated and for reference only.

Made in the U.S.A.

PART NUMBER

MIL DASH #

INDUCTANCE (μH)

Q MINIMUM

TEST FREQUENCY (MHz)

RESONANT FREQUENCY MINIMUM (MHz)

DC RESISTANCE MAXIMUM (OHMS)

CURRENT RATING MAXIMUM (mA)

MS75083- SERIES 1025 PHENOLIC CORE (LT4K)

1025-94K	1	0.10 ±10%	40	25.0	680.0	0.08	1380
1025-96K	2	0.12 ±10%	40	25.0	640.0	0.09	1300
1025-00K	3	0.15 ±10%	38	25.0	600.0	0.10	1230
1025-02K	4	0.18 ±10%	35	25.0	550.0	0.12	1120
1025-04K	5	0.22 ±10%	33	25.0	510.0	0.14	1040
1025-06K	6	0.27 ±10%	33	25.0	430.0	0.16	975
1025-08K	7	0.33 ±10%	30	25.0	410.0	0.22	830
1025-10K	8	0.39 ±10%	30	25.0	365.0	0.30	710
1025-12K	9	0.47 ±10%	30	25.0	330.0	0.35	660
1025-14K	10	0.56 ±10%	30	25.0	300.0	0.50	550
1025-16K	11	0.68 ±10%	28	25.0	275.0	0.60	500
1025-18K	12	0.82 ±10%	28	25.0	250.0	0.85	420
1025-20K	13	1.0 ±10%	25	25.0	230.0	1.00	390

MS73084- SERIES 1025 IRON CORE (LT10K)

1025-22K	1	1.2 ±10%	25	7.9	150.0	0.18	620
1025-24K	2	1.5 ±10%	28	7.9	140.0	0.22	560
1025-26K	3	1.8 ±10%	30	7.9	125.0	0.30	480
1025-28K	4	2.2 ±10%	30	7.9	115.0	0.40	415
1025-30K	5	2.7 ±10%	37	7.9	100.0	0.55	355
1025-32K	6	3.3 ±10%	45	7.9	90.0	0.85	285
1025-34K	7	3.9 ±10%	45	7.9	80.0	1.00	263
1025-36K	8	4.7 ±10%	45	7.9	75.0	1.20	239
1025-38K	9	5.6 ±10%	50	7.9	65.0	1.80	195
1025-40K	10	6.8 ±10%	50	7.9	60.0	2.00	185
1025-42K	11	8.2 ±10%	55	7.9	55.0	2.70	160
1025-44K	12	10.0 ±10%	55	7.9	50.0	3.30	144
1025-46K	13	12.0 ±10%	45	2.5	40.0	2.70	160
1025-48K	14	15.0 ±10%	45	2.5	35.0	2.80	157
1025-50K	15	18.0 ±10%	50	2.5	30.0	3.10	149
1025-52K	16	22.0 ±10%	50	2.5	25.0	3.30	144
1025-54K	17	27.0 ±10%	50	2.5	20.0	3.50	140

MS75085- SERIES 1025 FERRITE CORE (LT10K)

1025-56K	1	33.0 ±10%	45	2.5	24.0	3.40	130
1025-58K	2	39.0 ±10%	45	2.5	22.0	3.60	125
1025-60K	3	47.0 ±10%	45	2.5	20.0	4.50	110
1025-62K	4	56.0 ±10%	45	2.5	18.0	5.70	100
1025-64K	5	68.0 ±10%	50	2.5	15.0	6.70	92
1025-66K	6	82.0 ±10%	50	2.5	14.0	7.30	88
1025-68K	7	100.0 ±10%	50	2.5	13.0	8.00	84
1025-70K	8	120.0 ±10%	30	0.79	12.0	13.00	66
1025-72K	9	150.0 ±10%	30	0.79	11.0	15.00	61
1025-74K	10	180.0 ±10%	30	0.79	10.0	17.00	57
1025-76K	11	220.0 ±10%	30	0.79	9.0	21.00	52
1025-78K	12	270.0 ±10%	30	0.79	8.0	25.00	47
1025-80K	13	330.0 ±10%	30	0.79	7.0	28.00	45
1025-82K	14	390.0 ±10%	30	0.79	6.5	35.00	40
1025-84K	15	470.0 ±10%	30	0.79	6.0	42.00	36
1025-86K	16	560.0 ±10%	30	0.79	5.0	46.00	35
1025-88K	17	680.0 ±10%	30	0.79	4.2	60.00	30
1025-90K	18	820.0 ±10%	30	0.79	3.8	65.00	29
1025-92K	19	1000.0 ±10%	30	0.79	3.4	72.00	28

Parts listed above are QPL/MIL qualified

SERIES 1026 PHENOLIC CORE (LT4K)

1026-00M		0.022 ±20%	50	50.0	900.0	0.010	3800
1026-02K		0.027 ±10%	40	25.0	875.0	0.030	2200
1026-04K		0.033 ±10%	40	25.0	850.0	0.035	2000
1026-06K		0.039 ±10%	40	25.0	825.0	0.040	1900
1026-08K		0.047 ±10%	40	25.0	800.0	0.045	1800
1026-10K		0.056 ±10%	40	25.0	775.0	0.050	1700
1026-12K		0.068 ±10%	40	25.0	750.0	0.060	1500
1026-14K		0.082 ±10%	40	25.0	725.0	0.070	1400

Optional Tolerances: J = 5% H = 3% G = 2% F = 1%