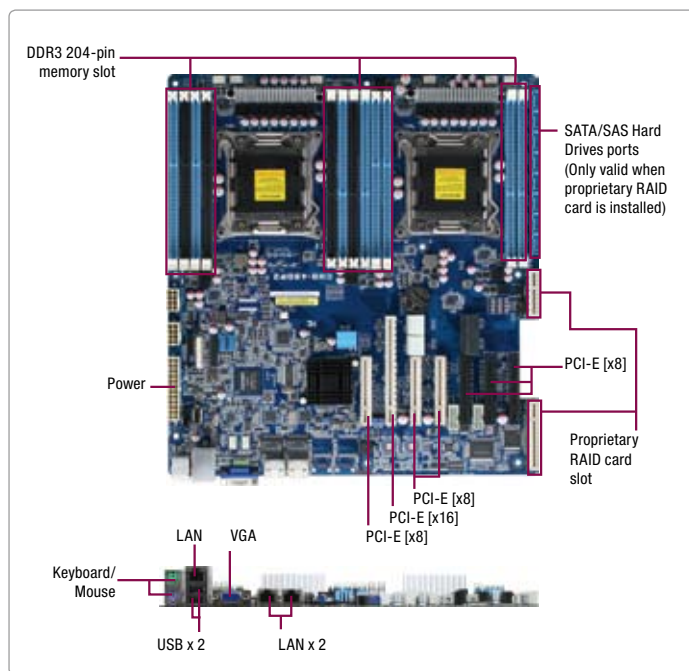


CMB-A9DP2

High Performance Server Board with Dual Intel® Xeon™ Processors

11

Xeon Industrial Server Motherboards



Features

- Intel® Xeon™ E5-2600 Family Processors
- Intel® Patsburg-A PCH
- Onboard 12 of DDR3 Slots
- Parallel Processor & Memory Layout for Cooling
- Embedded 10 of SATA Hard Disks Support
- Up to 8 of SAS Hard Disks Support By PIKE RAID Card
- Built-in BMC Engine
- Windows™ 2008 R2, Windows® 7/8, Cent OS, RHEL, SuSE Support



Specifications

System	
Form Factor	EATX
Processor	Socket LGA 2011 x 2, Intel® Xeon™ E5-2600 Processors
System Memory	204-pin Dual channel DDR3 1066/1333/1600, RDIMM, UDIMM, LRDIMM, up to 384GB
Chipset	Intel® C602-A PCH
I/O Chipset	N/A
Ethernet	Intel® 82574L, RJ-45 x 2 Management, RJ-45 x 1
BIOS	AMI
Wake On LAN	—
Watchdog timer	—
H/W monitoring	CPU Temperature, Cooling Fan status
Expansion Interface	PCI-E [x16] x 1 (Auto switch to [x8] if slot 5 is occupied) PCI-E [x8] x 6
Power Requirement	90 VDC ~ 240 VDC
Board Size	13" (L) x 12" (W) (330 mm x 305 mm)
Gross Weight	10 pcs in BULK package
Operation Temperature	50°F ~ 95°F (10°C ~ 35°C)
Storage Temperature	—
Operation Humidity	—
MTBF	—
Display	
Chipset	Aspeed AST2300
Memory	16MB VRAM
Resolution	1920 x 1200 @60Hz 32bpp
Output Interface	VGA x 1
I/O	
Storage	SATA 6.0Gb/s x 2, SATA 3.0Gb/s x 8, Support Software RAID 0,1,5,10 Upgradable to SAS2 6.0Gb/s x 8 with PIKE
Serial Port	—
USB	USB 2.0 x 2
PS/2 Port	Keyboard/Mouse x 1
Digital I/O	—
Audio	—

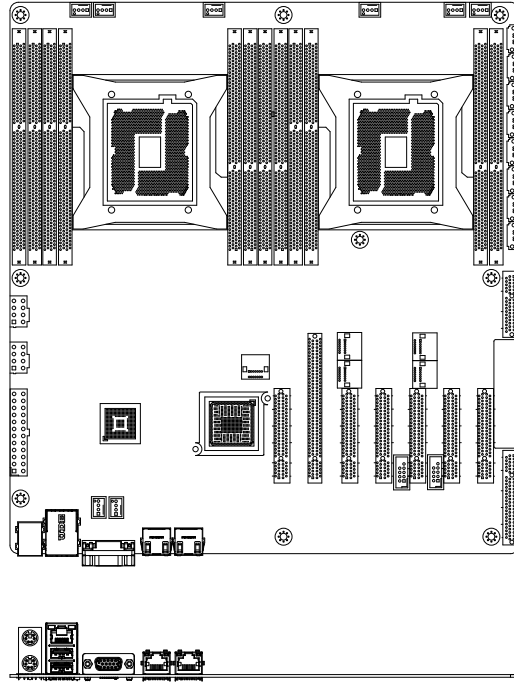
Applications

- High Performance Computing
- Data Mining
- Web Hosting
- Server Virtualization
- Data Storage Metadata Server
- Virtual Desktop

CMB-A9DP2

Dimension

Unit: mm



Ordering Information

Part No.	CPU	RAM	FAN/ Fanless	Display	LVDS	LAN	USB	RS-232	RS-232/422/485	Expansion Slot	Power	Temp.
9686Z9PR00	Socket	RDIMM UDIMM LRDIMM	Fan	VGA	—	GbE x 2	2	0	0	PCI-E [x16] x 1 PCI-E [x8] x 6	90 V DC ~ 240 V DC	10°C ~ 35°C

Optional Accessories

- TBD