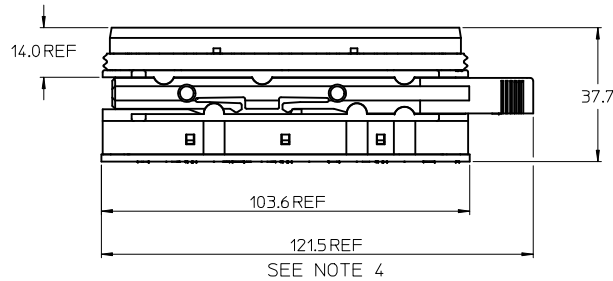
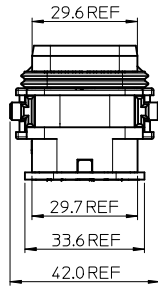
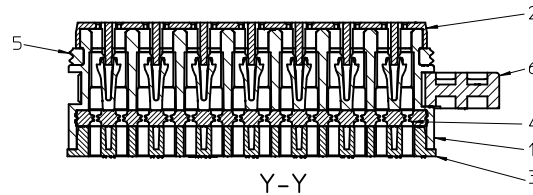
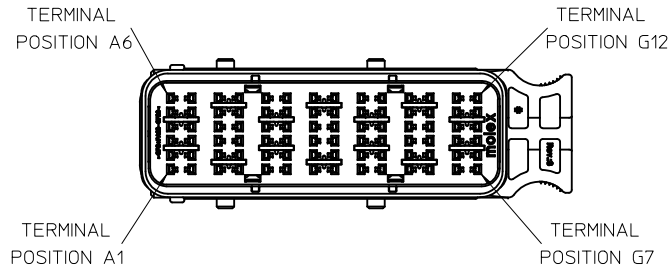
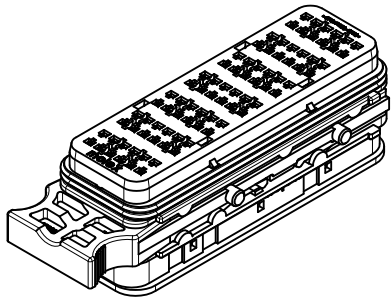
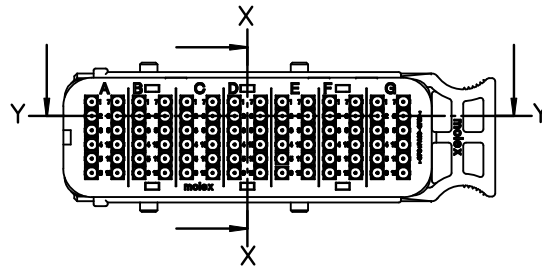
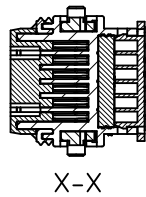


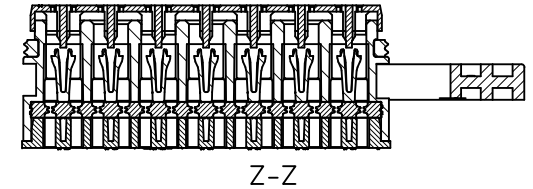
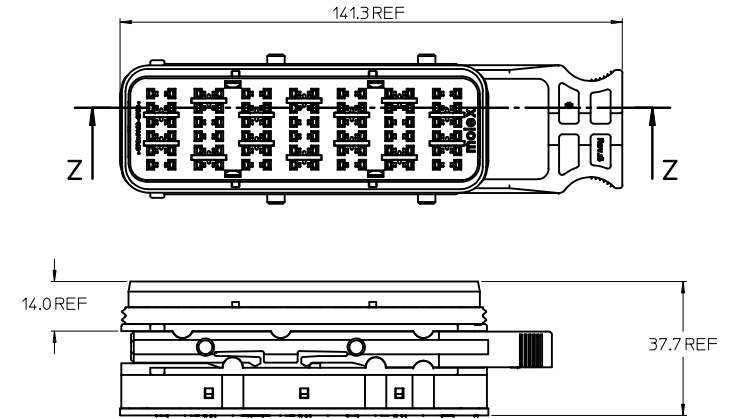
TPA IN FULL-LOCK (AS SHIPPED) POSITION AND LATCH IN CLOSED POSITION



SEE NOTE 4



TPA IN PRELOAD POSITION AND LATCH IN OPEN POSITION



NOTES:

1. MATERIALS: HOUSINGS: POLYSTYRENE/NYLON BLEND, GLASS FILLED, UL 94 HB
SEALS: LIQUID SILICONE RUBBER
2. MX150 RECEPTACLE TERMINAL PER SD-33012-001 TO BE USED WITH THIS ASSEMBLY
CRIMPED WITH CABLE INSULATION OUTER DIAMETER IN THE RANGE 1.5mm TO 2.69mm
3. PRODUCT SPECIFICATION: PS-85070-001
4. PACKAGING SPECIFICATION: PK-85070-001; LATCH SHIPPED IN PARTIALLY OPEN POSITION
5. MATES WITH: SRC2 BLADE HOUSING ASSEMBLY PER SD-93288-001
6. APPLICATION SPECIFICATION: AS-85070-001
7. CONDUIT INTERFACE OPTIONS: REFER TO SD-93286-001

| No. | DESCRIPTION | QTY. | COLOUR |
|------------------|--------------------|------|--------|
| 6 | SLIDING LATCH | 1 | BLACK |
| 5 | FEMALE FRONT SEAL | 1 | RED |
| 4 | FEMALE BACK SEAL | 1 | BLACK |
| 3 | FEMALE REAR COVER | 1 | BLACK |
| 2 | FEMALE FRONT COVER | 1 | GREEN |
| 1 | FEMALE HOUSING | 1 | BLACK |
| BILL OF MATERIAL | | | |

| REV | DESCRIPTION |
|-----|-------------------------|
| 1 | ADD NOTE 7 & CHG ISO |
| 2 | EC NO: WEU2012-0136 |
| 3 | DRWN:JSHEA 2012/02/07 |
| 4 | CHKD:WALLACE 2012/02/10 |
| 5 | APPR:EFOLAN 2012/02/22 |

| QUALITY SYMBOLS | GENERAL TOLERANCES (UNLESS SPECIFIED) | | | | | | | | | | | | | | | | | | |
|-----------------|--|------|----|------|----------|------|------|----------|------|------|----------|-------|------|---------|------|------|--|---------------|--|
| ▽=0 | | | | | | | | | | | | | | | | | | | |
| ▽=0 | | | | | | | | | | | | | | | | | | | |
| | <table border="1"> <thead> <tr> <th></th> <th>mm</th> <th>INCH</th> </tr> </thead> <tbody> <tr> <td>4 PLACES</td> <td>±---</td> <td>±---</td> </tr> <tr> <td>3 PLACES</td> <td>±---</td> <td>±---</td> </tr> <tr> <td>2 PLACES</td> <td>±0.20</td> <td>±---</td> </tr> <tr> <td>1 PLACE</td> <td>±---</td> <td>±---</td> </tr> <tr> <td></td> <td colspan="2">ANGULAR ±---°</td> </tr> </tbody> </table> | | mm | INCH | 4 PLACES | ±--- | ±--- | 3 PLACES | ±--- | ±--- | 2 PLACES | ±0.20 | ±--- | 1 PLACE | ±--- | ±--- | | ANGULAR ±---° | |
| | mm | INCH | | | | | | | | | | | | | | | | | |
| 4 PLACES | ±--- | ±--- | | | | | | | | | | | | | | | | | |
| 3 PLACES | ±--- | ±--- | | | | | | | | | | | | | | | | | |
| 2 PLACES | ±0.20 | ±--- | | | | | | | | | | | | | | | | | |
| 1 PLACE | ±--- | ±--- | | | | | | | | | | | | | | | | | |
| | ANGULAR ±---° | | | | | | | | | | | | | | | | | | |
| | DRAFT WHERE APPLICABLE MUST REMAIN WITHIN DIMENSIONS | | | | | | | | | | | | | | | | | | |

| DIMENSION STYLE | | SCALE | DESIGN UNITS | THIRD ANGLE PROJECTION |
|-----------------|------------|--|--------------|------------------------|
| MM ONLY | | 1:1 | METRIC | ☉ |
| DRAWN BY | DATE | TITLE | | |
| JOCANNOR | 2010/07/29 | SRC2 FEMALE 84 PIN RECEPTACLE HOUSING ASSEMBLY | | |
| CHECKED BY | DATE | MATERIAL NO. | | |
| JDWALLACE | 2010/08/26 | 932870001 | | |
| APPROVED BY | DATE | DOCUMENT NO. | | |
| EFOLAN | 2011/02/11 | SD-93287-001 | | |

| | | |
|---|--|-----------|
| MOLEX INCORPORATED | | SHEET NO. |
| SD-93287-001 | | 1 OF 1 |
| THIS DRAWING CONTAINS INFORMATION THAT IS PROPRIETARY TO MOLEX INCORPORATED AND SHOULD NOT BE USED WITHOUT WRITTEN PERMISSION | | |