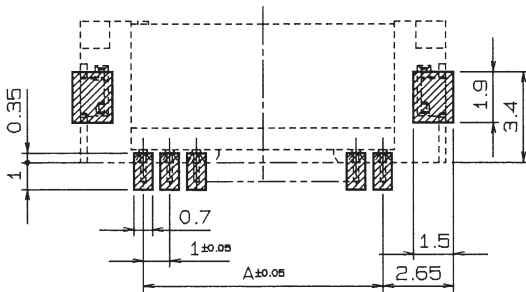
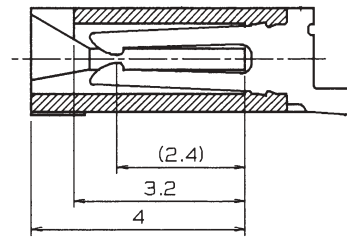
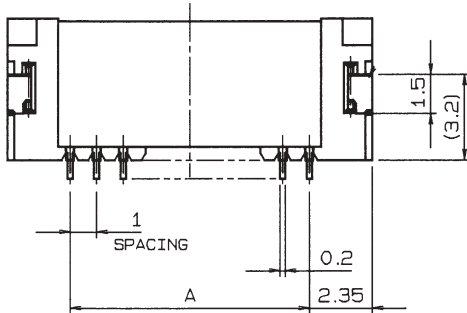
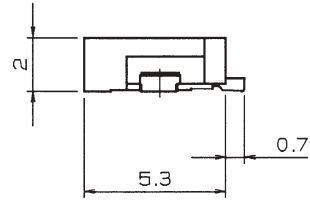
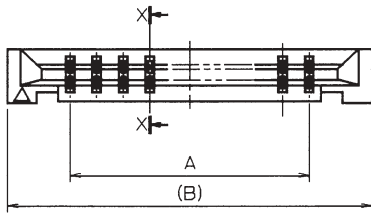


1.0mm Spacing

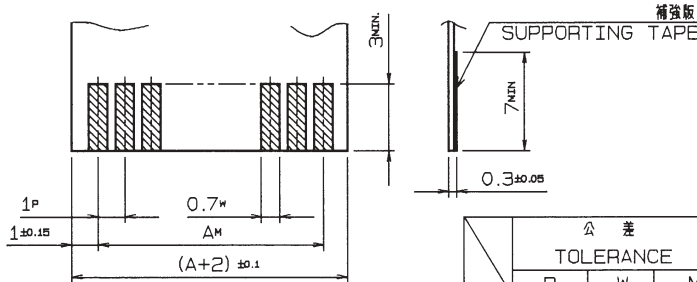
SERIES

6227

NON-ZIF ライトアングル SMT 両面接点
LIF Right Angle SMT (Dual Sided Contact Type)



基板取付寸法 (コネクタ搭載側)
MOUNTING LAYOUT (CONN. MOUNTING SIDE)



適用FPC/FFC
APPLICABLE FPC/FFC

	公差 TOLERANCE		
	P	W	M
FPC	±0.02	+0.07 -0.05	±0.05
FFC	±0.05	±0.03	±0.1

寸法表 DIMENSION		
極数 CIRCUIT	A	B
4	3	7.7
5	4	8.7
6	5	9.7
7	6	10.7
8	7	11.7
9	8	12.7
10	9	13.7
11	10	14.7
12	11	15.7
13	12	16.7
14	13	17.7
15	14	18.7
16	15	19.7
17	16	20.7
18	17	21.7
19	18	22.7
20	19	23.7

注文コード ORDERING CODE

XX 6227 OXX 100 800

- 00: トレー梱包 TRAY PACKAGE
- 18: マガジン TUBE PACKAGE
- 極数 NUMBER OF CONTACTS

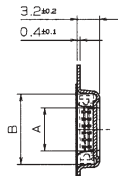
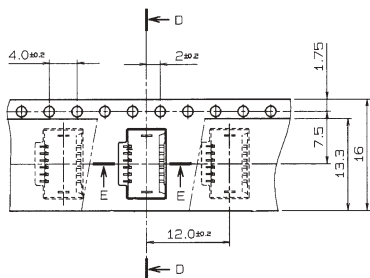
1.0mm Spacing

SERIES

6227

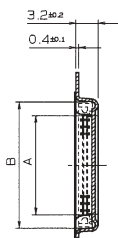
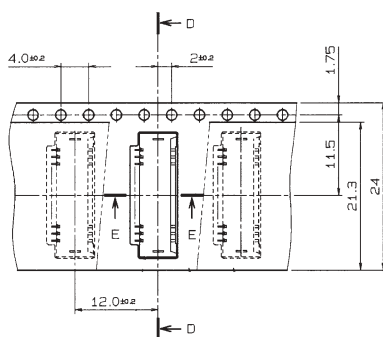
エンボス梱包品

Tape and Reel Package



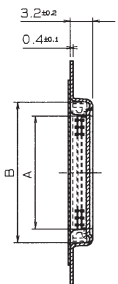
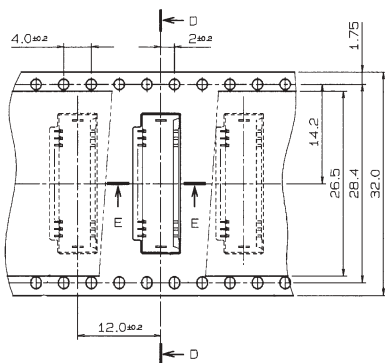
SECT. D-D

型番 ASSEMBLY NUMBER	極数 NO. OF POS	A	B
04 6227 004 100 800	4	4.2	8.1
04 6227 005 100 800	5	5.2	9.1
04 6227 006 100 800	6	6.2	10.1



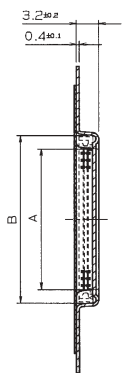
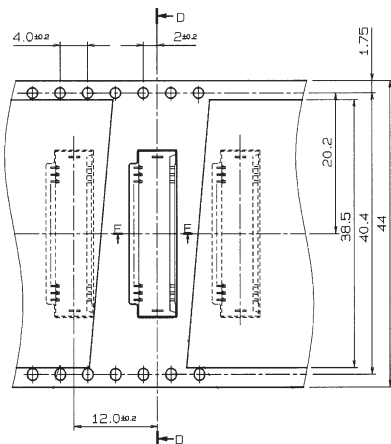
SECT. D-D

型番 ASSEMBLY NUMBER	極数 NO. OF POS	A	B
04 6227 007 100 800	7	7.2	11.1
↑ 008	↑ 8	↑ 8.2	↑ 12.1
009	9	9.2	13.1
010	10	10.2	14.1
011	11	11.2	15.1
012	12	12.2	16.1
↓ 013	↓ 13	↓ 13.2	↓ 17.1
04 6227 014 100 800	14	14.2	18.1



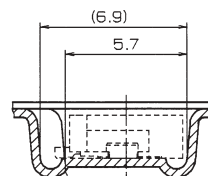
SECT. D-D

型番 ASSEMBLY NUMBER	極数 NO. OF POS	A	B
04 6227 015 100 800	15	15.2	19.1
↑ 016	↑ 16	↑ 16.2	↑ 20.1
↓ 017	↓ 17	↓ 17.2	↓ 21.1
04 6227 018 100 800	18	18.2	22.1



SECT. D-D

型番 ASSEMBLY NUMBER	極数 NO. OF POS	A	B
04 6227 019 100 800	19	19.2	23.1
04 6227 020 100 800	20	20.2	24.1



SECT. E-E

注文コード ORDERING CODE

04 6227 OXX 100 800

極数 NUMBER OF CONTACTS

梱包数量 1000ヶ/リール
(1000 connectors per Tape and Reel.)