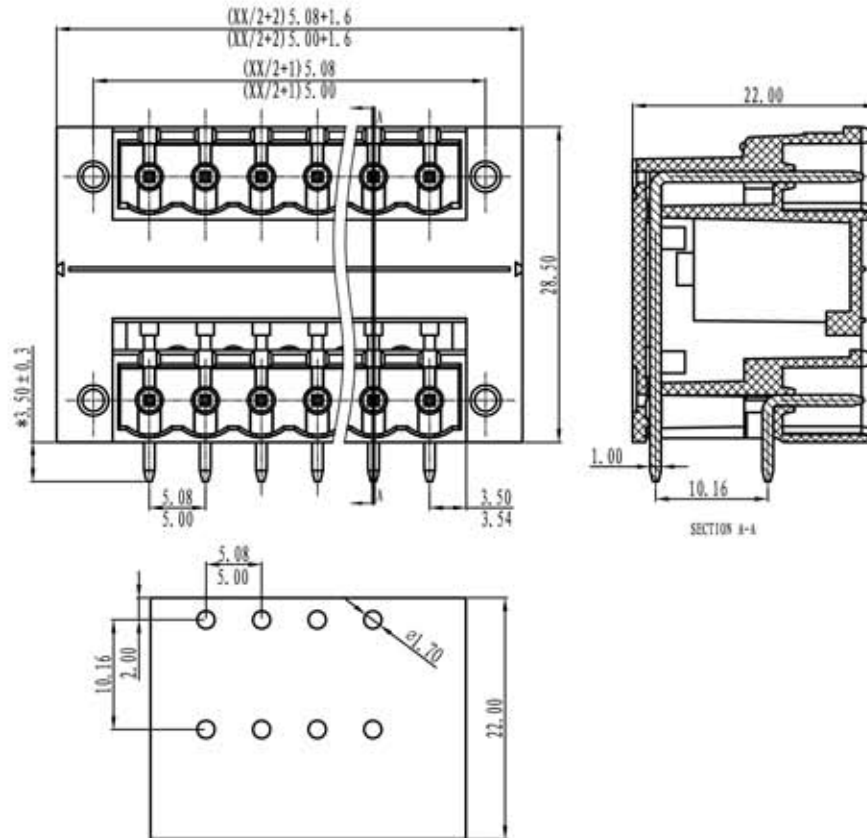


# euro-block

product specification



## Electrical

Standard: UL-IEC  
 Rated voltage: 300V-320V  
 Rated current: 15A-10A  
 Contact resistance: 20m Ω  
 Insulation resistance: 500M Ω/DC500V  
 Withstanding voltage: AC2000V/1Min

## Mechanical

Temp.Range: -40°C~+105°C  
 MAX soldering: +250°C for 5 sec

## Dimensions

Pitch: 5.08mm-5.00mm  
 Poles: 2p-24p

## Material

Housing: PA66, UL94V-0  
 Pin header: Brass, Tin plated  
 Nut: M2.5 Brass

Schema generale del codice di ordinazione / General description of ordering code



TOLERANCES EXCEPT AS NOTED

variable range	linear dimension					fillet	chamfer	short angle sid				≡	-	□	//	⊥	
	to 6	over 6 to 30	over 30 to 120	over 120 to 480	over 480 to			all	to 6	to 10	to 50						to 120
tolerance	±0.1	±0.2	±0.3	±0.5	±0.9	±0.2	±0.5	±1	1'	30'	20'	10'	0.5	0.025	0.06	0.12	0.4

UNITS	mm	SIZE	A4	SCALE	FIRST ANGLE PROJECTION	
					NAME	MDL-HF