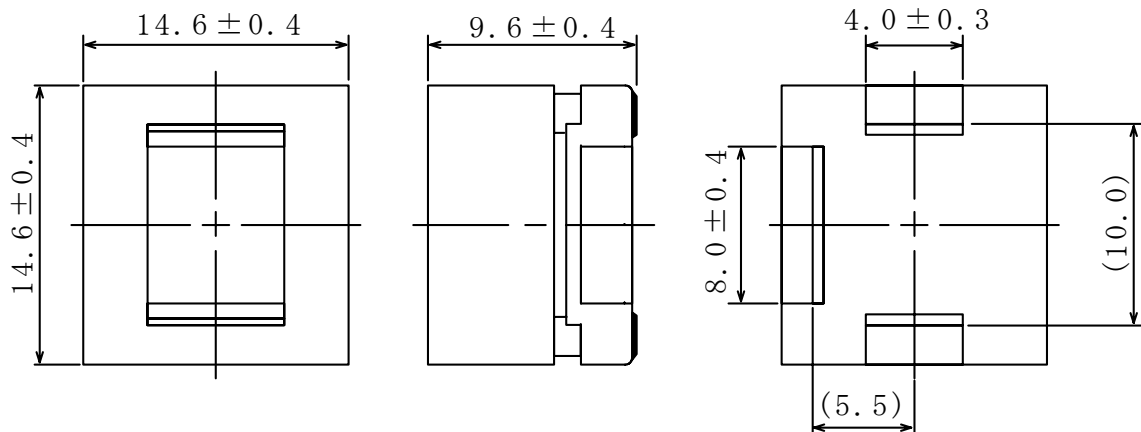
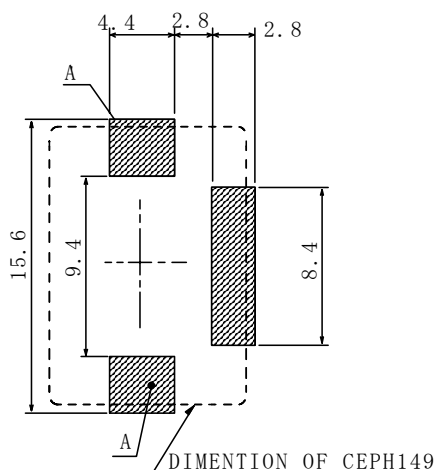
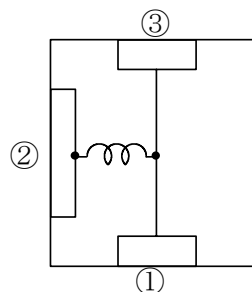


Type: CEPH149
◆ Product Description

- 15.0×15.0mm Max.(L×W),10.0mm Max. Height.
- Inductance range: 1.0~2.4 μ H.
- Rated current range: 10~20A
- In addition to the standards versions shown here, custom inductors are also available to meet your exact requirements.


◆ Feature

- High Current Inductors
- Mn-Zn core used, ideally used in computer CPU, Server, etc power supply.
- RoHS Compliance

◆ Dimensions (mm)

◆ Land Pattern (mm)

◆ Schematics(Bottom)


Type:CEPH149
◆ Specification

| Part Name | Stamp | Inductance [Within] 100 kHz. | D.C.R.(mΩ) Max.(Typ.) (at 20°C) | Rated current (A) ※1 |
|-----------------|-------|------------------------------------|---------------------------------------|-------------------------|
| CEPH149NP-1R0MC | 1R0M | 1.0 μH ± 20% | 1.2(0.99) | 20.0 |
| CEPH149NP-1R6MC | 1R6M | 1.6 μH ± 20% | 1.5(1.24) | 15.5 |
| CEPH149NP-2R4MC | 2R4M | 2.4 μH ± 20% | 1.5(1.24) | 10.0 |

※1 Rated current: The DC current at which the inductance decreases to 90 % of it's initial value or when $\Delta t=40^{\circ}\text{C}$, whichever is lower($T_a=20^{\circ}\text{C}$).