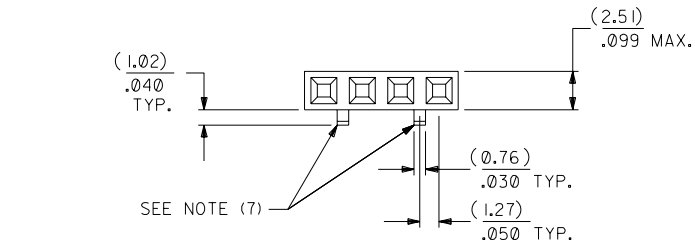


# OPTION D

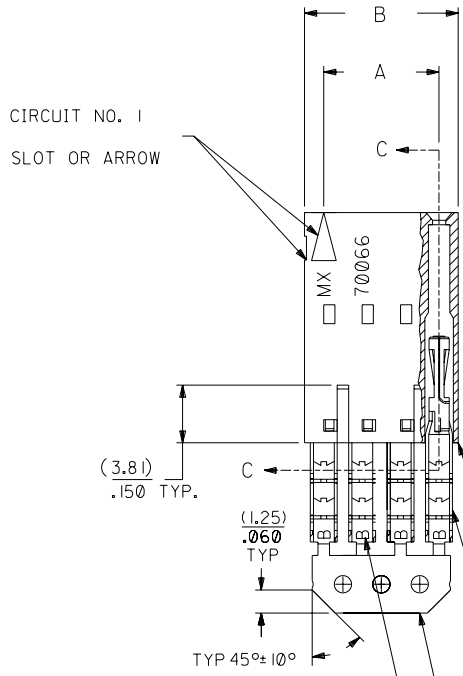
## NOTES:

- 1) TO BE USED WITH (26) AWG. STRANDED WIRE WITH (1.35)/.053 DIA. MAX. INSULATION.
- 2) SEE CHART FOR CIRCUIT SIZES.
- 3) STANDARD PACKAGING PER PK-70873-0001. OPTIONAL PACKAGING MAY BE AVAILABLE, REQUEST DWG. PK-70400
- 4) PARTS STACKABLE END TO END ON (2.54)/.100 CENTERS.
- 5) REFER TO PRODUCT SPECIFICATION: PS-70400.
- 6) SEE DWG. SDA-70400-\*\*\*\* (SHT. 5) FOR OPTIONAL HOUSING DETAILS.
- 7) 4 CIRCUIT SHOWN. 3 - 25 CKT'S. HAVE (2) RIBS.
- 8) TO MATE WITH MOLEX PART NO'S.: 70004-\*\*\*\*, 70013-\*\*\*\*

9) 2 CIRCUIT ASSEMBLIES SUPPLIED AS GROUPED PAIRS.



CIRCUIT NO. 1  
SLOT OR ARROW



I.D. SLOT CODE TO WIRE GAUGE CHART	
I.D. SLOT CODE	WIRE GAUGE
B	26 AWG.

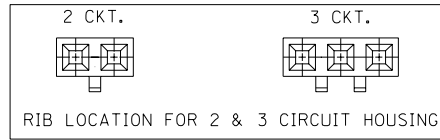
PLATING CODE (STRIPE ON CARRIER STRIP)	
PLATING	COLOR
30 GOLD	RED

HOUSING PART NO. 70066-\*\*\*\*  
MATERIAL: G.F. POLYESTER, 94V-0

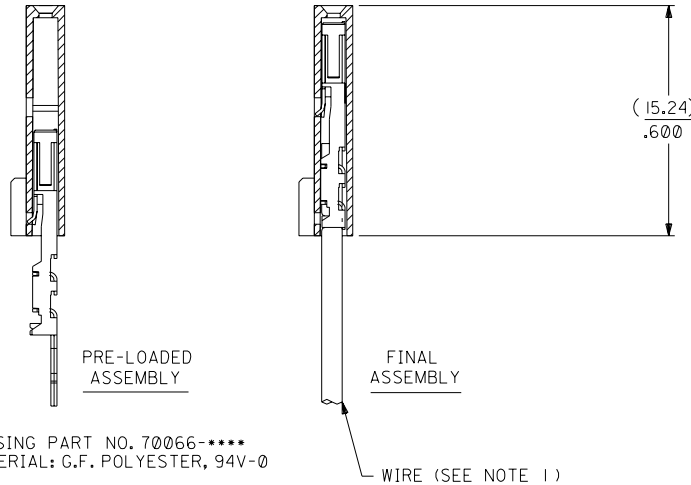
TERMINAL PART NO. 70028-\*\*\*\*  
MATERIAL: PHOSPHOR BRONZE  
PLATING PER ES-88-\*\*\*

30 GOLD - .000030 MIN. GOLD IN SELECT AREA WITH .000075 MIN. TIN IN SELECT AREA OVER .000050 MIN. NICKEL OVER-ALL.

\*THE PRIMARY SHIPPING CARTON WILL BE LABELED "COMPLIANT TO ROHS DIRECTIVE 2002/95/EC AND ELV ANNEX II OF DIRECTIVE 2000/53/EC". CARTONS WITHOUT THIS LABEL MAY CONTAIN PRODUCT WITH LEAD.



## SECTION C-C



CKT. SIZE	A	B	EDP. NO.	ENG. NO.
2	( 2.54 ) .100	( 5.05 ) .199	14-56-4023	A-70400-1296
3	( 5.08 ) .200	( 7.59 ) .299	14-56-4033	A-70400-1297
4	( 7.62 ) .300	( 10.13 ) .399	14-56-4043	A-70400-1298
5	( 10.16 ) .400	( 12.67 ) .499	14-56-4053	A-70400-1299
6	( 12.70 ) .500	( 15.21 ) .599	14-56-4063	A-70400-1300
7	( 15.24 ) .600	( 17.75 ) .699	14-56-4073	A-70400-1301
8	( 17.78 ) .700	( 20.29 ) .799	14-56-4083	A-70400-1302
9	( 20.32 ) .800	( 22.83 ) .899	14-56-4093	A-70400-1303
10	( 22.86 ) .900	( 25.37 ) .999	14-56-4103	A-70400-1304
11	( 25.54 ) 1.000	( 27.91 ) 1.099	14-56-4113	A-70400-1305
12	( 27.94 ) 1.100	( 30.45 ) 1.199	14-56-4123	A-70400-1306
13	( 30.48 ) 1.200	( 32.99 ) 1.299	14-56-4133	A-70400-1307
14	( 33.02 ) 1.300	( 35.53 ) 1.399	14-56-4143	A-70400-1308
15	( 35.56 ) 1.400	( 38.07 ) 1.499	14-56-4153	A-70400-1309
16	( 38.01 ) 1.500	( 40.61 ) 1.599	14-56-4163	A-70400-1310
17	( 40.64 ) 1.600	( 43.15 ) 1.699	14-56-4173	A-70400-1311
18	( 43.18 ) 1.700	( 45.69 ) 1.799	14-56-4183	A-70400-1312
19	( 45.72 ) 1.800	( 48.23 ) 1.899	14-56-4193	A-70400-1313
20	( 48.26 ) 1.900	( 50.77 ) 1.999	14-56-4203	A-70400-1314
21	( 50.80 ) 2.000	( 53.31 ) 2.099	14-56-4213	A-70400-1315
22	( 53.34 ) 2.100	( 55.85 ) 2.199	14-56-4223	A-70400-1316
23	( 55.88 ) 2.200	( 58.39 ) 2.299	14-56-4233	A-70400-1317
24	( 58.42 ) 2.300	( 60.93 ) 2.399	14-56-4243	A-70400-1318
25	( 60.96 ) 2.400	( 63.47 ) 2.499	14-56-4253	A-70400-1319

LTR.	REVISIONS	LTR.	REVISIONS
E	LEAD FREE UCP2004-1769 RWHITE 04/03/17	C	REVISE PER ECR #U80110 2/3/88 MJM
DI	ADD CARRIER CHAMF ECN #UDT1998-0280 05/20/98 LMCGRATH	B	REDRAWN ON CAD ECR# 8842 5/8/86 W.Z.
D	REVISED PER ECR NO. U82110 10-17-88 AAB		

DIMENSIONS SHOWN (METRIC) INCH	
UNLESS OTHERWISE SPECIFIED TOLERANCES: ANGULAR ± 1/2°	
3 PLACE	± .010
2 PLACE	± .014 ± 0.25
1 PLACE	± 0.35
DRAFT WHERE APPLICABLE MUST REMAIN WITHIN DIMENSIONS	
DRWG. BY: WAZ	CHK'D. BY: WAZ
APP'D. BY:	SCALE: 4:1

REVISE ONLY ON CAD SYSTEM	
TITLE	ASSEMBLY, SL CONNECTOR (SINGLE ROW- (2.54)/.100 GRID)
MOLEX INCORPORATED LITSE, ILL. 60532 U.S.A.	SHEET NO. DATE 10/11/84
PART NO. SDA-70400-1296-1319	DRWG. NO. SDA-70400-1296-1319
FILE NAME: S70400DXB	THIS DRAWING CONTAINS INFORMATION THAT IS PROPRIETARY TO MOLEX INC. AND SHOULD NOT BE USED WITHOUT WRITTEN PERMISSION.
DA	C