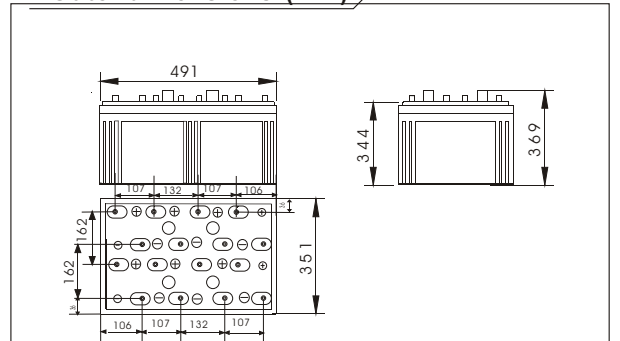




Sw220000(2V2000AH)



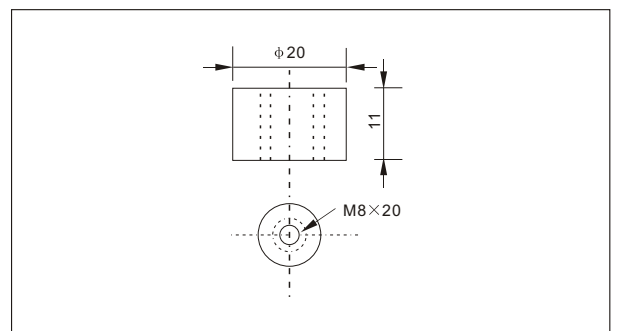
● Outer dimensions (mm)



● Specifications

Nominal Voltage		2 V
Rated capacity (10 hour rate)		2000 Ah
Dimensions	Total Height	369 mm (14.5 inches)
	Height	344 mm (13.5 inches)
	Length	491 mm (19.3 inches)
	Width	351 mm (13.8 inches)
Weight Approx		131 Kg (289lbs)

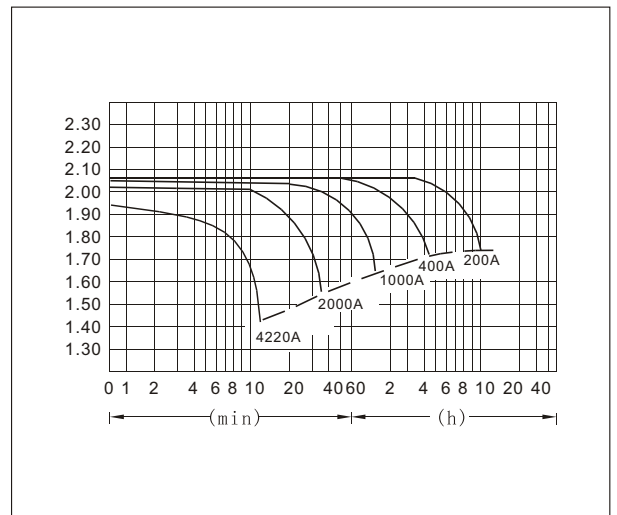
● Terminal Type (mm)



● Characteristics

Capacity 25°C(77°F)	10 hour rate(200 A) 5 hour rate(320 A) 1 hour rate(1200 A)	2000 AH 1600 AH 1200 AH
Internal Resistance	Full charged Battery at 25°C(77°F)	Approx 0.12 mΩ
Capacity affected by Temperature (10hour rate)	40°C(104°F) 25°C(77°F) 0°C(32°F) -15°C(5°F)	102% 100% 85% 65%
Self-Discharge at 25°C(77°F)	Capacity after 3 month storage Capacity after 6 month storage Capacity after 12 month storage	91% 82% 64%
Terminal	T20	
Charge (constant Voltage)	Cycle	Initial Charging Current less than 800 A Voltage 2.35-2.40V
	Float	Voltage 2.25-2.30V

● Discharge Curves 25°C(77°F)



Constant Current(Amp) and Constant Power(Watt) Discharge Table at 25°C(77°F)

Time		5min	10min	15min	30min	1h	2h	3h	4h	5h	8h	10h	20h
1.60V	A	6406	4220	3402	2280	1200	700.0	514.0	400.0	330.0	234.0	210.0	113
	W	11018	7512	6079	4086	2160	1281	953.5	750.0	625.4	446.9	404.3	220
1.70V	A	6204	3808	3204	2180	1128	668.0	500.0	390.0	324.0	228.0	206.0	110.0
	W	11043	7087	5975	4079	2126	1283	965.0	755.8	629.5	444.6	403.3	215.1
1.75V	A	6002	3406	2802	2040	1092	652.0	488.0	384.0	320.0	226.0	202.0	110.0
	W	10924	6458	5329	3913	2108	1260	947.7	748.8	625.3	443.0	398.3	216.7
1.80V	A	5784	3210	2604	1880	1056	636.0	476.0	378.0	312.0	220.0	200.0	108.0
	W	10816	6170	5000	3630	2049	1241	935.3	743.9	614.6	434.5	396.2	214.4
1.85V	A	5590	3008	2404	1680	1020	620.0	460.0	368.0	304.0	214.0	190.0	102.0
	W	10565	5805	4664	3276	1999	1221	910.8	730.5	604.7	427.1	382.3	206.0