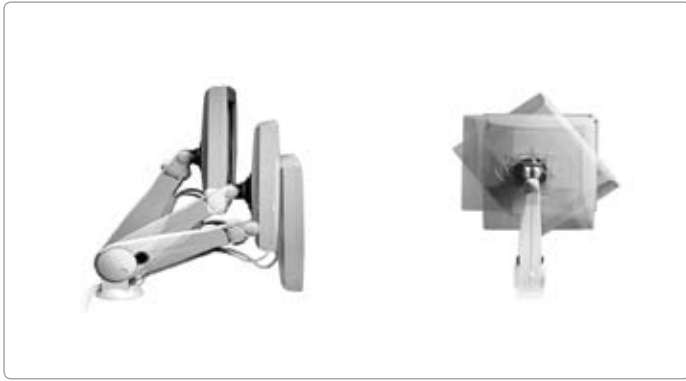


ARM-LA0115

LCD Flat Panel Monitor Arm (VESA 75/100)



Features

- SUSPA Series System Ensures The Stability Of Product And Strength Of Quality
- Supports Monitors from 8 Kg To 15 Kg Depending On Users' Demands
- Y-Y Connection Adjusts In Different Positions For Comfortable Viewing
- Cable Location Helps To Organize The Cables In Order
- Adjusting Knob Adapts To Different Monitor Weights

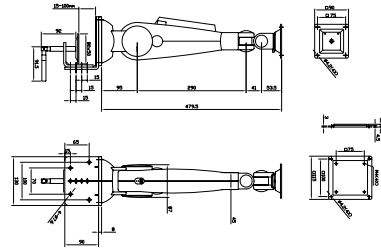
- Screen Pivots 180° Front Or Back
- Screen Pivots 180° Up Or Down
- Screen Pivots 270° Left Or Right
- Gross Weight: 11 lb (5 Kg)
- Supports AOP-9150, AOP-9120, AOP-8120, AOP-8150, APC-9172, APC-8172, APC-8152, APC-8122, OPD-212A, OPD-215A, OPD-217A, OPD-215E, AMB-232, ACP-5212/5182, ACP-5152, AGD-317D/315D/312D, ACD-521D/518D/515D, AGD-317R/315R/312R, ACD-521R/518R/515R

Ordering Information

- ARM-LA0115
LCD Flat Panel Monitor Arm

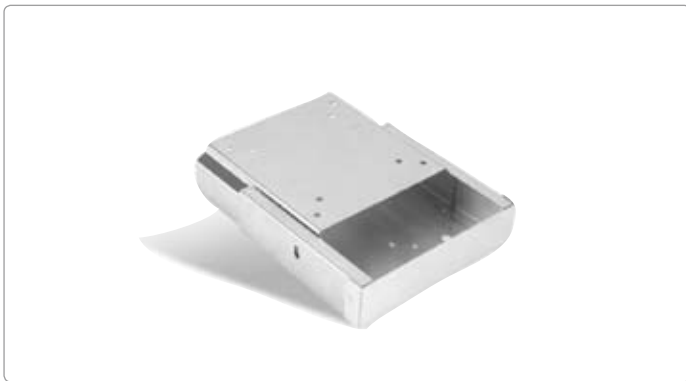
Dimension

Unit: mm



ARM-WK075-0

LCD Flat Panel Monitor Wallmount Kit (VESA 75/100)



Features

- Supports AHP-1081/1070, ACP-5212/5182/5152, AFP-6123, FOX-151/151B/122/122B/121/81, AGD-317D/315D/312D/310D/317R/315R/312R, ACD-521D/518D/515D/521R/518R/515R, FOX-15D/12D/81D, AHP-1152/1122, AHP-2176/2153/2122, ACP-5215/5185, AFP-6152, FOX-15R/12R

Ordering Information

- ARM-WK075-0
LCD Flat Panel Monitor Wallmount Kit with VESA 75/100mm Standards

Dimension

Unit: mm

