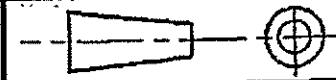


1 OBSOLETE PARTS: OBSOLETE CIS STREAMLINING PER D.RENAUD/D.SINISI

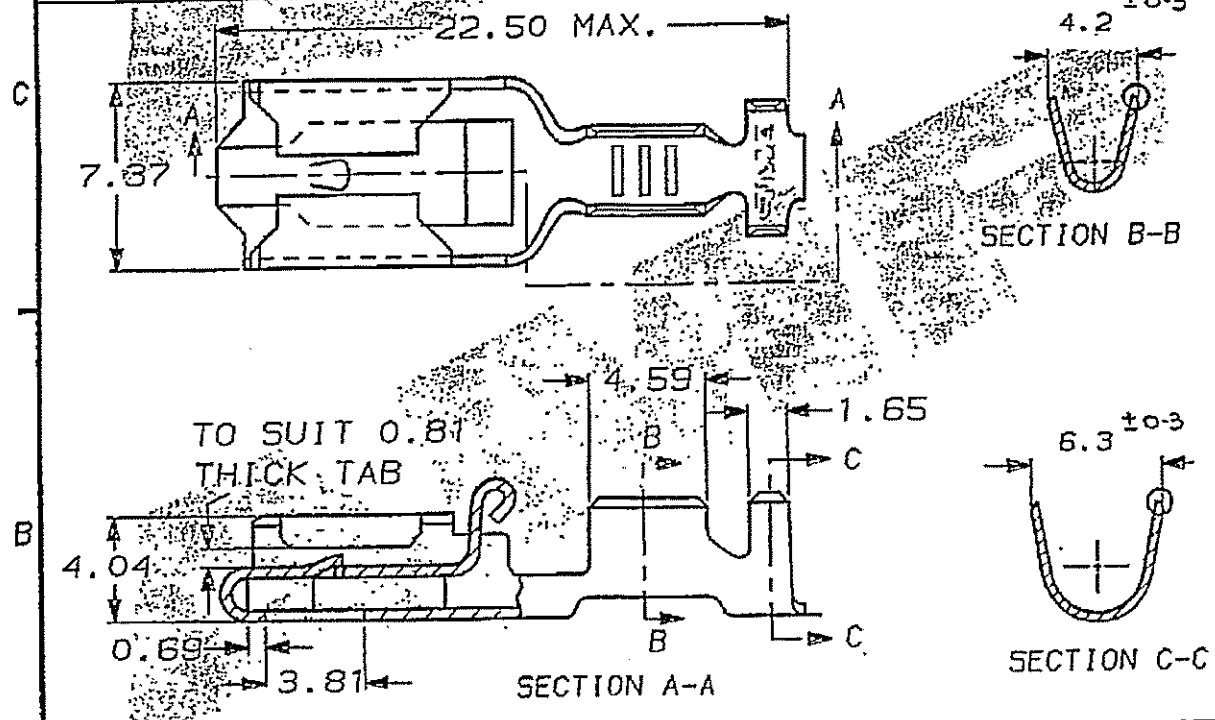
DO NOT SCALE

DIMENSIONS IN MM.



C.A.D. FILE CODE
C154717

PART NUMBER	MATERIAL	FINISH	REELING	LOOSE PIECE (REF. ONLY)
154717-1	BRASS	NONE	STANDARD	341001-1
154717-2	PHOS. BRONZE	NONE	STANDARD	341001-2
154717-3	BRASS	TIN	STANDARD	341001-3
154717-4	PHOS. BRONZE	TIN	STANDARD	341001-4
154717-5	PHOS. BRONZE	NONE	STANDARD	341001-5
154717-6	BRASS	PRE-TIN	STANDARD	341001-6
154717-7	PHOS. BRONZE	PRE-TIN	STANDARD	341001-7
154717-8	PHOS. BRONZE	SILVER	STANDARD	341001-8
154717-9	BRASS	SILVER	STANDARD	341001-9
1-154717-0	OBSOLETE	OBSOLETE	OBSOLETE	---
1-154717-1	BRASS	NONE	REV. REEL VERSION-1	---
1-154717-2	PHOS. BRONZE	NONE	REV. REEL VERSION-2	---
1-154717-3	PHOS. BRONZE	PRE-TIN	STANDARD	---
1-154717-4	BRASS	TIN	REV. REEL VERSION-3	---
1-154717-5	PHOS. BRONZE	TIN	REV. REEL VERSION-4	---
1-154717-6	PHOS. BRONZE	TIN	STANDARD (SPRUE FREE VERSION)	---



WIRE RANGE 2.5 TO 4.0mm² INSULATION RANGE 3.6 TO 4.3mm DIA.

CUSTOMER DWG FOR REFERENCE ONLY		RELEASED FOR PUBLICATION ORIGINAL 1974	
-		DR. D.A.BARRATT 27.11.91	
-		CH. D.TERRY APP. D.A.BARRATT	
-		TE TE Connectivity	
NAME POSITIVE LOCK RECEPTACLE			
AR2	REVISED PER ECO-11.005150	RK/HMR	28MAR11
SCALE	LOC	SIZE	DWG.No.
4/1	E	A4	C154717
REV	ECN	APPROVED	DATE
AR2			
SHEET		1/1	