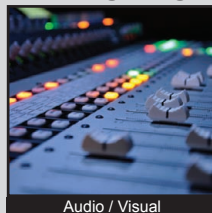


# TL3210 SERIES TACT SWITCH

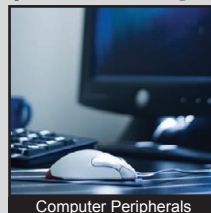
ANTI-VANDAL SWITCHES  
 DETECTOR SWITCHES  
 DIP SWITCHES  
 KEYLOCK SWITCHES  
 NAVIGATION SWITCHES  
 PUSHBUTTON SWITCHES  
 ROCKER SWITCHES  
 ROTARY SWITCHES  
 SLIDE SWITCHES  
 SNAP ACTION SWITCHES  
**TACTILE SWITCHES**  
 TOGGLE SWITCHES  
 CAP OPTIONS



## APPLICATIONS / MARKETS



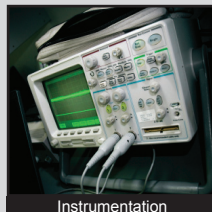
Audio / Visual



Computer Peripherals



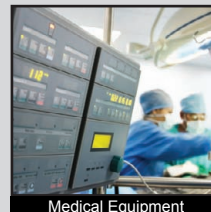
Consumer Electronics



Instrumentation



Telecommunication



Medical Equipment

# RoHS

## SPECIFICATIONS

**Electrical Rating:** 50mA @ 12VDC  
**Life Expectancy:** 100,000 Cycles  
**Contact Resistance:** 500mΩ Max.  
**Insulation Resistance:** 100 MΩ Min. at 100VDC  
**Dielectric Strength:** 250VAC for 1 min.  
**Operating Temperature:** -20°C to 70°C  
**Storage Temperature:** -30°C to 80°C  
**Operating Force:** 160 gf +/- 50 gf  
**Travel:** 0.2mm +/- 0.1mm  
**Contact Arrangement:** SPST, Normally Open

## FEATURES & BENEFITS

- Illumination options
- Tape & Reel packaging: 2500 pieces per reel
- Miniature size: 5.6mm x 3.5mm
- Surface Mount Design

## PART NUMBER CONFIGURATOR

| Series | Model | Actuator | Force | LED   | Contact Material |
|--------|-------|----------|-------|---|------------------|
| TL     | 3210  | A        | F160  | B - Blue<br>G - Green<br>R - Red<br>Y - Yellow<br>W - White<br>X - Red/Green Bi-color | Q - Silver       |

*Specifications subject to change without notice*



**E-SWITCH®**

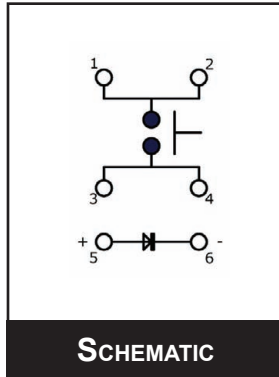
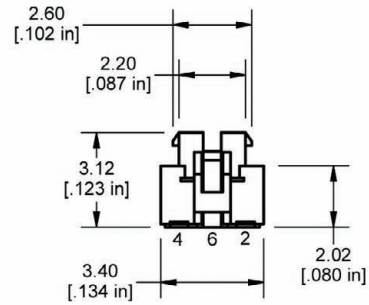
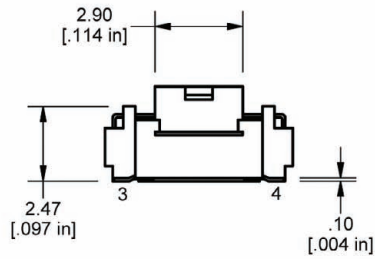
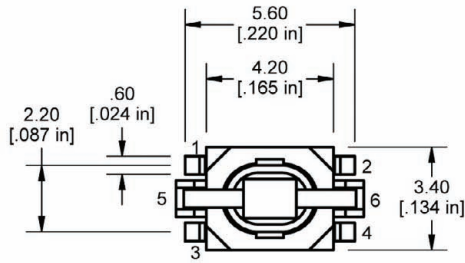
www.e-switch.com

800.867.2717

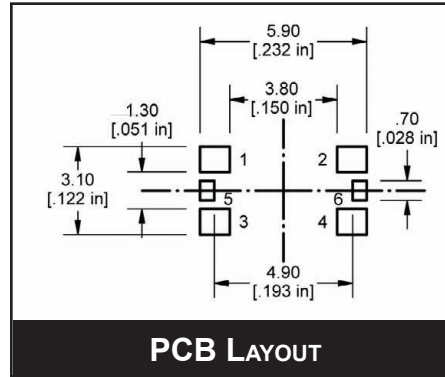
2

# TL3210 SERIES TACT SWITCH

## BODY DIMENSIONS



**SCHEMATIC**



**PCB LAYOUT**

| LED Specifications |                          |   |                                |
|--------------------|--------------------------|---|--------------------------------|
|                    | Forward Current (mA)     | Forward Voltage V @ 20mA                                      | Luminous Intensity (mcd)       |
| Blue               | 20mA                     | 3.8 min - 3.3 typ. VDC  | 80 mcd                         |
| Red                | 20mA                     | 1.95 typ. - 2.5 max VDC                                       | 230 mcd                        |
| Green              | 20mA                     | 2.1 typ. - 2.5 max VDC  | 50 mcd                         |
| Yellow             | 20mA                     | 2.0 typ. - 2.5 max VDC  | 160 mcd                        |
| White              | 20mA                     | 3.3 typ. - 4.0 max. VDC                                       | 300 mcd                        |
| Red/Green Bi-color | Red: 20mA<br>Green: 20mA | Red: 1.95 typ - 2.5 max VDC<br>Green: 3.3 typ. - 4.1 max. VDC | Red: 220 mcd<br>Green: 200 mcd |



ANTI-VANDAL SWITCHES  
DETECTOR SWITCHES  
DIP SWITCHES  
KEYLOCK SWITCHES  
NAVIGATION SWITCHES  
PUSHBUTTON SWITCHES  
ROCKER SWITCHES  
ROTARY SWITCHES  
SLIDE SWITCHES  
SNAP ACTION SWITCHES  
TACTILE SWITCHES  
TOGGLE SWITCHES  
CAP OPTIONS