



TAI-SAW TECHNOLOGY CO., LTD.

No. 3, Industrial 2nd Rd., Ping-Chen Industrial District,
Taoyuan, 324, Taiwan, R.O.C.

TEL: 886-3-4690038 FAX: 886-3-4697532

E-mail: tstsales@mail.taisaw.com Web: www.taisaw.com

Approval Sheet For Product Specification

Issued Date:

Product Name: SAW Filter 313.85MHz SMD3.8X3.8mm

TST Parts No.: TA0518A

Customer Parts No.: _____

Company: _____
Division: _____
Approved by : _____
Date: _____

Checked by: Asin Lin

Approval by: Francis Chen

Date: 2005/9/12



TAI-SAW TECHNOLOGY CO., LTD.

No. 3, Industrial 2nd Rd., Ping-Chen Industrial District,
Taoyuan, 324, Taiwan, R.O.C.

TEL: 886-3-4690038 FAX: 886-3-4697532

E-mail: tstsales@mail.taisaw.com Web: www.taisaw.com

SAW Filter 313.85 MHz

MODEL NO.: TA0518A

REV. NO.:1

A. MAXIMUM RATING:

1. Input Power Level: 10 dBm
2. DC voltage: 5 V
3. Operating Temperature: -40°C to +85°C
4. Storage Temperature: -40°C to +85°C

RoHS Compliant
Lead free
Lead-free soldering

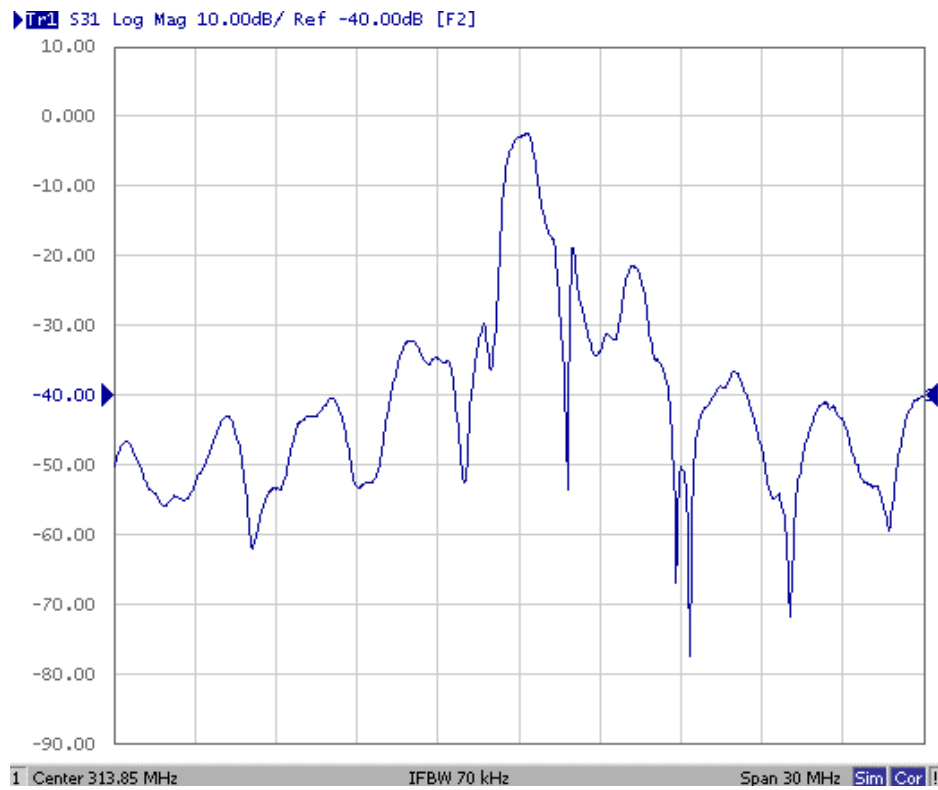
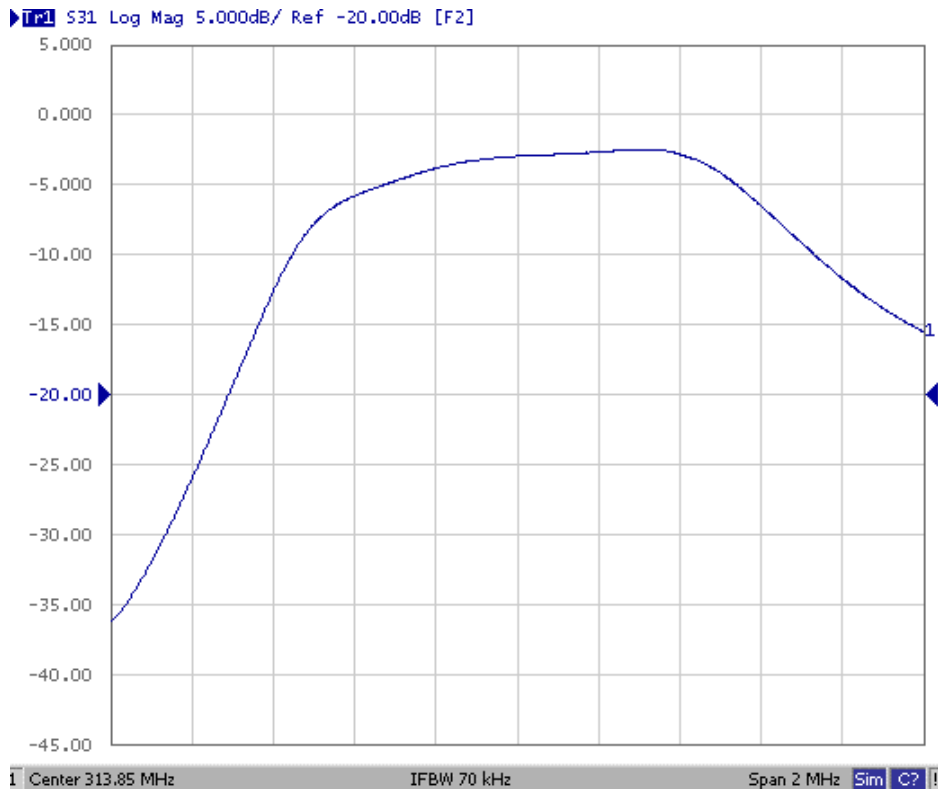
B. ELECTRICAL CHARACTERISTICS:

TA= -40°C to +95°C

Item	Min.	Typ.	Max.	Note
Center frequency F_c (MHz)	-	313.85	-	1
Minimum I.L. (313.67~314.07 MHz) (dB) IL_{min}	-	2.7	4.0	
Pass band (relative to IL_{min})				
313.62~314.05 MHz (dB)	-	1.5	3.0	1
313.56~314.11 MHz (dB)	-	2.0	6.0	
Pass bandwidth (relative to IL_{min}) BW_3 (KHz)	800	970	-	
Attenuation:(relative to IL_{min}) (dB)				
10~270 MHz (dB)	45	50	-	1
270~307 MHz (dB)	30	35	-	
307~312.76 MHz (dB)	15	20	-	
315~335 MHz (dB)	10	15	-	
335~400 MHz (dB)	35	40	-	
400~1000 MHz (dB)	45	50	-	
Impedance at F_c ; Input $Z_{IN}=R_{IN}/C_{IN}$ Output $Z_{OUT}=R_{OUT}/C_{OUT}$	29Ω // 3.17 pF 29Ω // 3.17 pF			

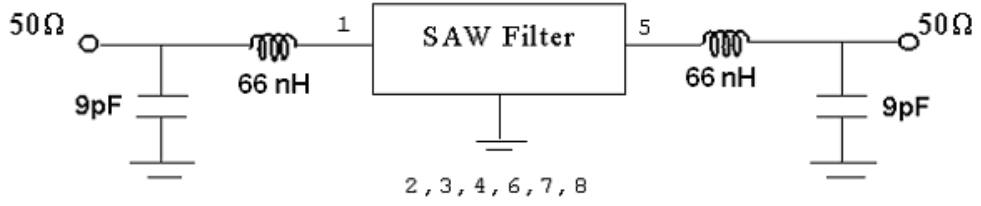
Note1. The standard definitions is in JIS C 6703

C. FREQUENCY CHARACTERISTICS:

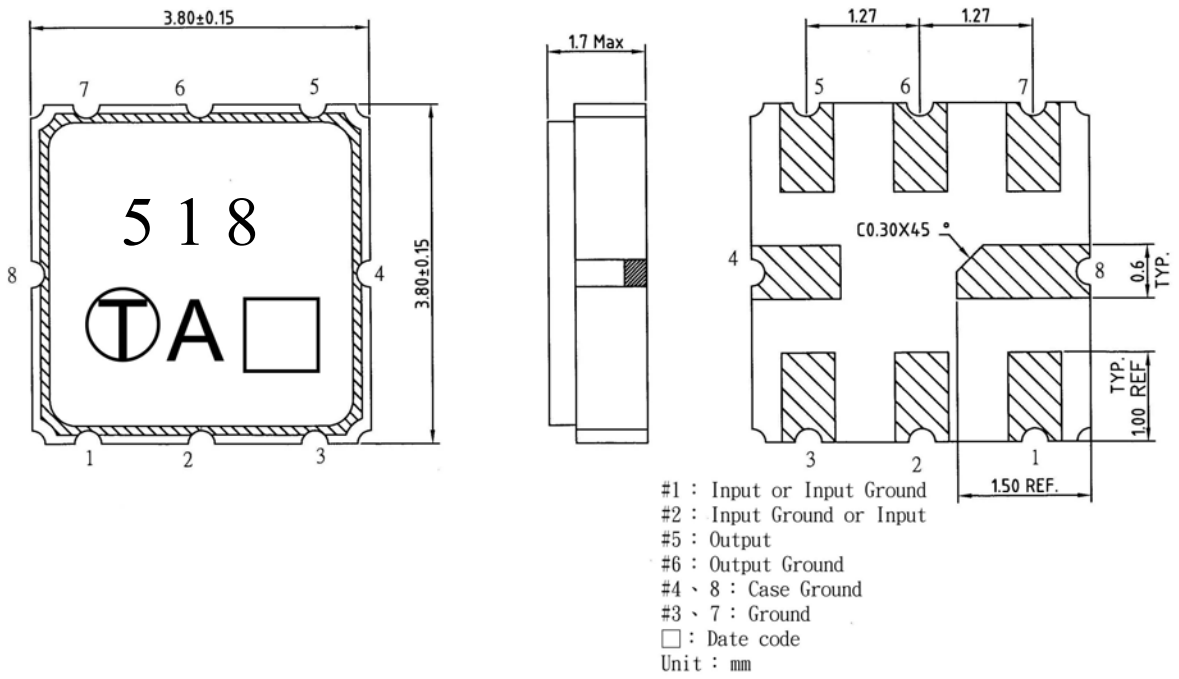


D. MEASUREMENT CIRCUIT:

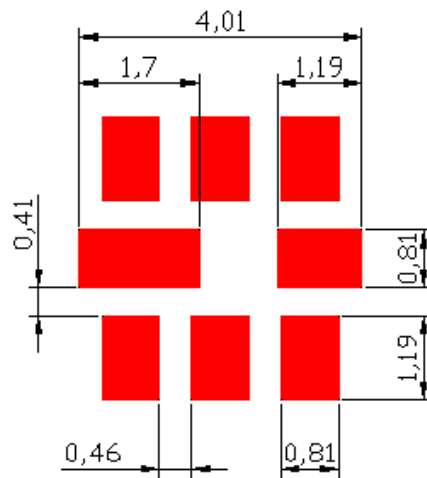
HP Network analyzer



E. OUTLINE DRAWING:

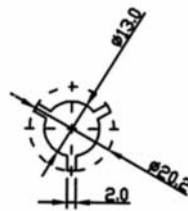
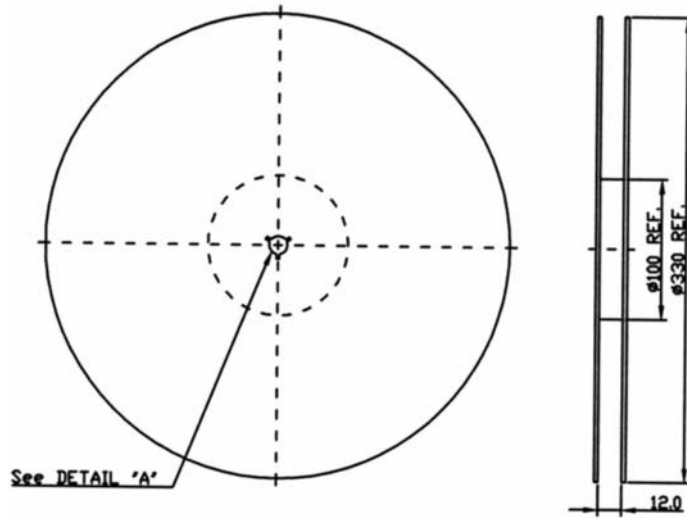


F. PCB FOOTPRINT



G. PACKING:

1. REEL DIMENSION



2. TAPE DIMENSION

