

**PLEASE CHECK WWW.MOLEX.COM FOR LATEST PART INFORMATION**

**Part Number:** [0399300320](#)  
**Status:** **Active**  
**Description:** 3.81mm (.150") Pitch Beau™ EuroMate™ Pluggable PCB Terminal Block, Dual Level, 270° Wire Entry, 20 Circuits

**Documents:**

[Drawing \(PDF\)](#) [RoHS Certificate of Compliance \(PDF\)](#)

**Agency Certification**

UL E48521

**General**

|                             |                       |
|-----------------------------|-----------------------|
| Product Family              | Terminal Blocks       |
| Series                      | <a href="#">39930</a> |
| Application                 | Wire-to-Board         |
| Component Type              | Plug                  |
| Product Literature Order No | USA-264               |
| Product Name                | EuroMate™ Pluggable   |
| Type                        | Euro Block            |

**Physical**

|                                |                    |
|--------------------------------|--------------------|
| Circuits (Loaded)              | 20                 |
| Color - Resin                  | Black              |
| Entry Angle                    | Horizontal         |
| Flammability                   | 94V-0              |
| Lock to Mating Part            | None               |
| Material - Plating Mating      | Tin                |
| Material - Plating Termination | Tin                |
| Material - Resin               | Nylon              |
| Number of Rows                 | 2                  |
| Orientation                    | Vertical           |
| Panel Mount                    | No                 |
| Pitch - Mating Interface (in)  | 0.150 In           |
| Pitch - Mating Interface (mm)  | 3.81 mm            |
| Polarized to Mating Part       | Yes                |
| Stackable                      | No                 |
| Temperature Range - Operating  | 130°C              |
| Termination Interface: Style   | Screw or Lug       |
| Wire Size AWG                  | 14, 16, 18, 20, 22 |
| Wire Size mm²                  | 0.50 - 1.50        |

**Electrical**

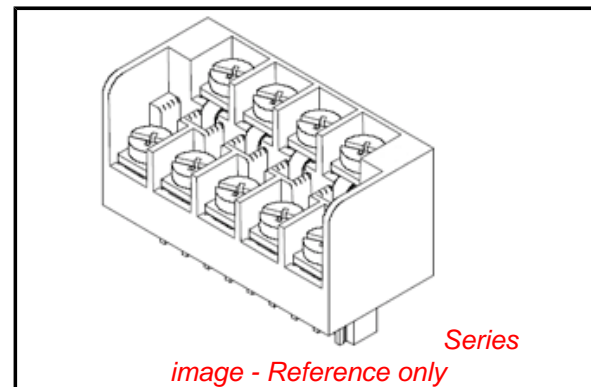
|                               |      |
|-------------------------------|------|
| Current - Maximum per Contact | 12A  |
| Voltage - Maximum             | 300V |

**Material Info**

|                 |        |
|-----------------|--------|
| Old Part Number | 930920 |
|-----------------|--------|

**Reference - Drawing Numbers**

|               |              |
|---------------|--------------|
| Sales Drawing | SD-39930-004 |
|---------------|--------------|



**EU RoHS**

**ELV and RoHS Compliant**  
**REACH SVHC**  
 Not Reviewed  
**Halogen-Free Status**  
 Not Reviewed

**China RoHS**



**Need more information on product environmental compliance?**

Email [productcompliance@molex.com](mailto:productcompliance@molex.com)  
 For a multiple part number RoHS Certificate of Compliance, [click here](#)

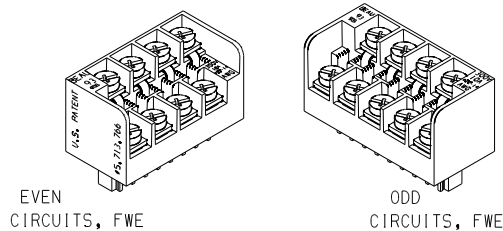
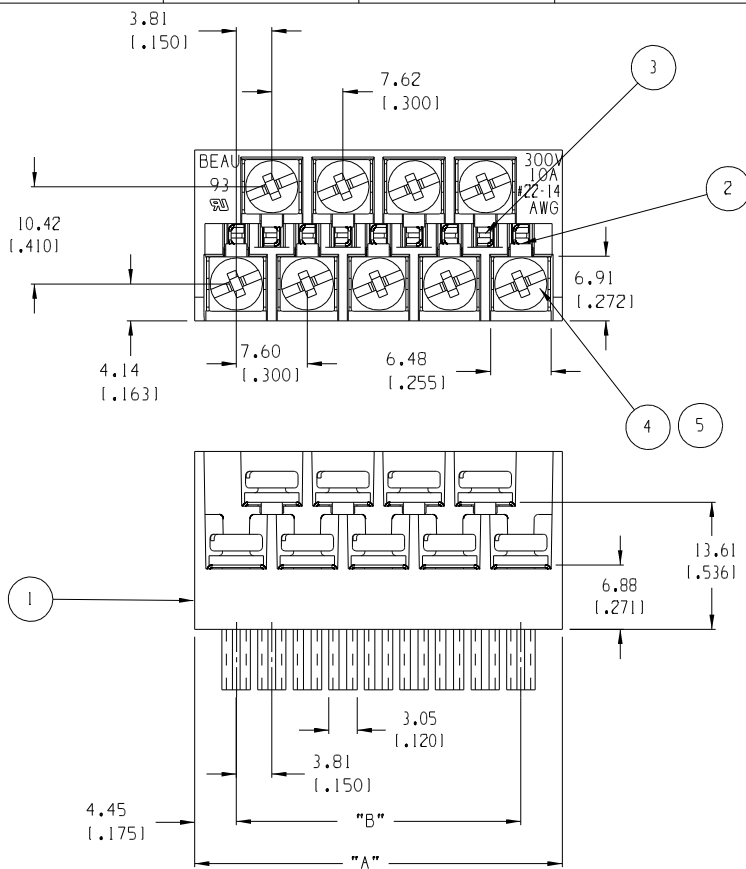
Please visit the [Contact Us](#) section for any non-product compliance questions.

**Search Parts in this Series**

[39930Series](#)

**Mates With**

[39511-1020](#) , [39512-1020](#)



ISO VIEW SCALE 1:1

| NUMBER OF CIRCUITS | "A" DIM.       | "B" DIM.       | MATERIAL NUMBER |
|--------------------|----------------|----------------|-----------------|
| 03                 | 16.51 (1.6501) | 7.62 (1.300)   | 399300303       |
| 04                 | 20.32 (1.8001) | 11.43 (1.4501) | 399300304       |
| 05                 | 24.13 (1.9501) | 15.24 (1.6001) | 399300305       |
| 06                 | 27.94 (1.1001) | 19.05 (1.7501) | 399300306       |
| 07                 | 31.75 (1.2501) | 22.86 (1.9001) | 399300307       |
| 08                 | 35.56 (1.4001) | 26.67 (1.0501) | 399300308       |
| 09                 | 39.37 (1.5501) | 30.48 (1.2001) | 399300309       |
| 10                 | 43.18 (1.7001) | 34.29 (1.3501) | 399300310       |
| 11                 | 46.99 (1.8501) | 38.10 (1.5001) | 399300311       |
| 12                 | 50.80 (2.0001) | 41.91 (1.6501) | 399300312       |
| 13                 | 54.61 (2.1501) | 45.72 (1.8001) | 399300313       |
| 14                 | 58.42 (2.3001) | 49.53 (1.9501) | 399300314       |
| 15                 | 62.23 (2.4501) | 53.34 (2.1001) | 399300315       |
| 16                 | 66.04 (2.6001) | 57.15 (2.2501) | 399300316       |
| 17                 | 69.85 (2.7501) | 60.96 (2.4001) | 399300317       |
| 18                 | 73.66 (2.9001) | 64.77 (2.5501) | 399300318       |
| 19                 | 77.47 (3.0501) | 68.58 (2.7001) | 399300319       |
| 20                 | 81.28 (3.2001) | 72.39 (2.8501) | 399300320       |
| 21                 | 85.09 (3.3501) | 76.20 (3.0001) | 399300321       |

NOTES:

1. MATERIAL: SEE TABLE
2. FINISHES: SEE TABLE
3. PRODUCT SPECIFICATION: NOT REQUIRED
4. INCH DIMS ARE SHOWN IN PARENTHESIS (XXX)
5. "XX" REFERS TO THE NUMBER OF CIRCUITS
6. MATES WITH 3.81MM HEADERS

| ITEM | QTY. (EVEN NO. OF CIRCUITS) | QTY. (ODD NO. OF CIRCUITS) | DESCRIPTION            | MATERIAL      | FINISH        |
|------|-----------------------------|----------------------------|------------------------|---------------|---------------|
| 5    | "XX"                        | "XX"                       | SCREW M3 SQUARE WASHER | STEEL         | ZINC CHROMATE |
| 4    | "XX"                        | "XX"                       | NUT HEX M3             | STEEL         | ZINC CHROMATE |
| 3    | XX/2                        | (XX-1)/2                   | TERMINAL LONG          | COPPER        | TIN           |
| 2    | XX/2                        | (XX+1)/2                   | TERMINAL SHORT         | COPPER        | TIN           |
| 1    | 1                           | 1                          | BODY FWE 3.81          | THERMOPLASTIC | BLACK         |

|                                                        |                                              |                                             |                                                      |                                                                                                                                |                                                                                      |                           |                                                                                                                                         |                                 |
|--------------------------------------------------------|----------------------------------------------|---------------------------------------------|------------------------------------------------------|--------------------------------------------------------------------------------------------------------------------------------|--------------------------------------------------------------------------------------|---------------------------|-----------------------------------------------------------------------------------------------------------------------------------------|---------------------------------|
| EC NO. 11648<br>DRWN: RK 8-23-05<br>CHK: CH*K<br>APPR: | DESCRIPTION<br>MAJOR<br>CRITICAL<br>SPC<br>S | QUALITY SYMBOLS                             | GENERAL TOLERANCES:<br>(UNLESS SPECIFIED)            | SCALE 2:1                                                                                                                      | DESIGN UNITS<br><input type="checkbox"/> mm <input checked="" type="checkbox"/> INCH | THIRD ANGLE PROJECTION    | PROJECT NO. - -<br>DIMENSIONS:<br><input checked="" type="checkbox"/> mm <input type="checkbox"/> INCH <input type="checkbox"/> mm ONLY | SHEET REV<br>REVISE ON CAD ONLY |
|                                                        |                                              | DRAWN BY & DATE<br>J. FARMER 12-02-04       | CHECKED BY & DATE<br>R. KEMP 12-02-04                | APPROVED BY & DATE<br>GHR 12-02-04                                                                                             | CAD FILENAME<br>9309XX.PRT                                                           | MATERIAL NO.<br>SEE CHART | DRAWING NO.<br>SD-39930-004                                                                                                             | SHEET NO.<br>1 OF 1             |
|                                                        |                                              | ANGULAR: ±2°                                | DRAFT WHERE APPLICABLE MUST REMAIN WITHIN DIMENSIONS | THIS DRAWING CONTAINS INFORMATION THAT IS PROPRIETARY TO MOLEX INCORPORATED AND SHOULD NOT BE USED WITHOUT WRITTEN PERMISSION. | TITLE:<br>PLUG, FWE, 3.81MM EUROMATE ASY -C                                          | MOLEX INCORPORATED        | SIZE<br>B                                                                                                                               |                                 |
|                                                        |                                              | TITLE:<br>PLUG, FWE, 3.81MM EUROMATE ASY -C | MOLEX INCORPORATED                                   | SIZE<br>B                                                                                                                      |                                                                                      |                           |                                                                                                                                         |                                 |