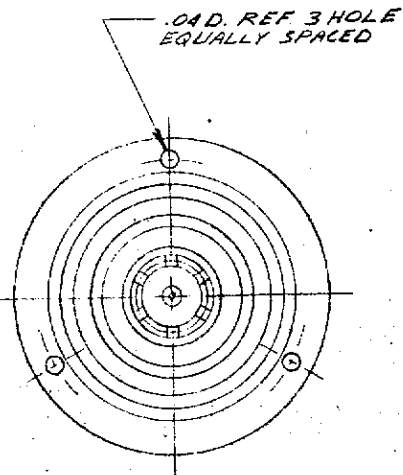
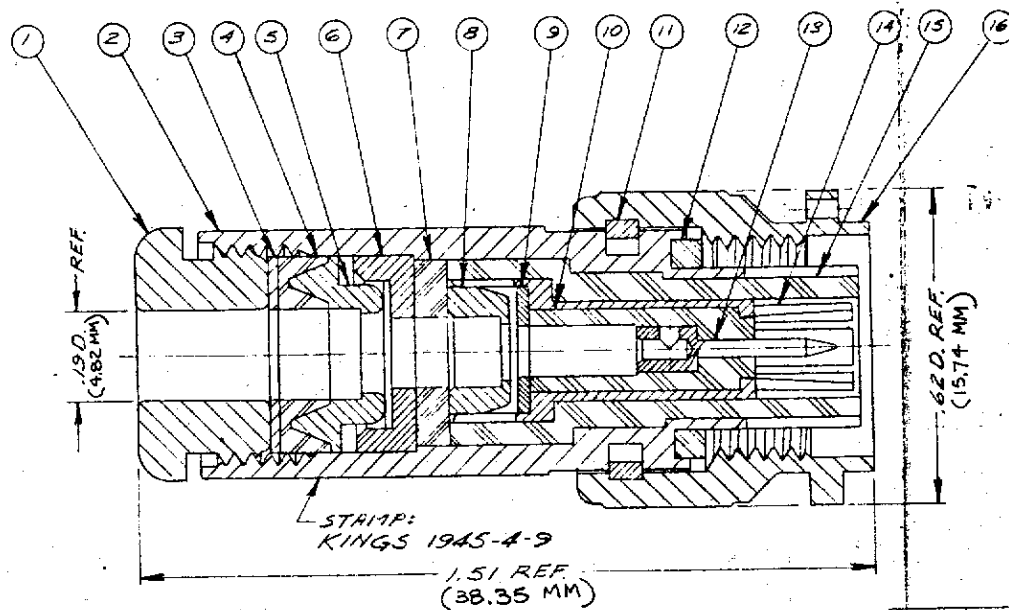


DASH NO.	DESCRIPTION	MADE FROM
----------	-------------	-----------

REVISIONS

ISSUE	CHANGES
0	ER 13942 MJB 3 DEC 74
1	CN 15911 A GA 15 JUL 76
2	CN 16130 E GA 29 JUL 76
3	CN 24945 C GJG 19 AUG 83
4	CN 28495 D AJ 10 DEC 86
5	CN 31416 A KH 23 FEB 90
6	CN 34639 C KH 17 MAY 93
H	REVISED PER ER22040 02/22/2010 GGR

S-D
1945-4-9



NOTES:
1. FOR USE WITH MICRODOT 293-3930 CABLE.
2. FOR CABLING INSTRUCTIONS SEE CP-1301.

CUSTOMER SALES DRAWING

S-D

ITEM	REQ'D	DESCRIPTION	PART NO.
16	1	COUPLING NUT	
15	1	INSULATOR	
14	1	OUTER CONTACT	
13	1	TNC CONTACT M	1-4896-3MA9
12	1	GASKET	
11	1	C-RING	
10	1	INSULATOR	
9	1	WASHER	C-19-88-17-M06
8	1	BRAID CLAMP	1-1117-1M06
7	1	INSULATOR	1-1118-1M99
6	1	RETAINER	1-1119-1M06
5	1	BRAID CLAMP	C-19-88-4-M06
4	1	GASKET	1055-1-M99
3	1	WASHER	C-19-88-3-M06
2	1	BODY	
1	1	CLAMP NUT	A-59-309-1-M06

USED ON:	
REF:	
FINISH:	
SPEC.	KER 10004
MATL:	
SPEC.	TNC TRIAX PLUG
DRAWN	MJB
DATE	21 NOV 74
APPR.	LI
DATE	3 DEC 74

UNLESS OTHERWISE SPECIFIED:

1. TOLERANCES: FRACTIONS & 2 PLACE DECIMALS ± .010
3 PLACE DECIMALS ± .004 ANGLES ± 0° 30'
2. REMOVE ALL BURRS, BREAK SHARP EDGES .005 MAX.
3. NO FILLETS PERMITTED.
4. SURFACE ROUGHNESS 63 MICROINCHES RMS MAX.
5. ALL DIMENSIONS PRIOR TO PLATING.

KINGS
by WINCHESTER
Winchester Electronics
62 Barnes Industrial
Road, North
Wallingford, CT 06492

1945-4-9

S-D